

PROJECT NO.:	18090
DATE:	07-19-18
REVISIONS:	
XX/XX/XXXX	SUBMITTER TO
XX	

SOUTHLAND ENGINEERING
 CIVIL ENGINEERS - LAND SURVEYORS - LAND PLANNERS
 114 OLD MILL ROAD, CARTERSVILLE, GEORGIA 30120
 PHONE: 770-387-0440 FAX: 770-607-5151

CITY OF ROME
FLOYD COUNTY JAIL TRAINING CENTER
 LAND LOT(S) 193, 23rd DISTRICT, 3rd SECTION,
 CITY OF ROME, FLOYD COUNTY, GEORGIA



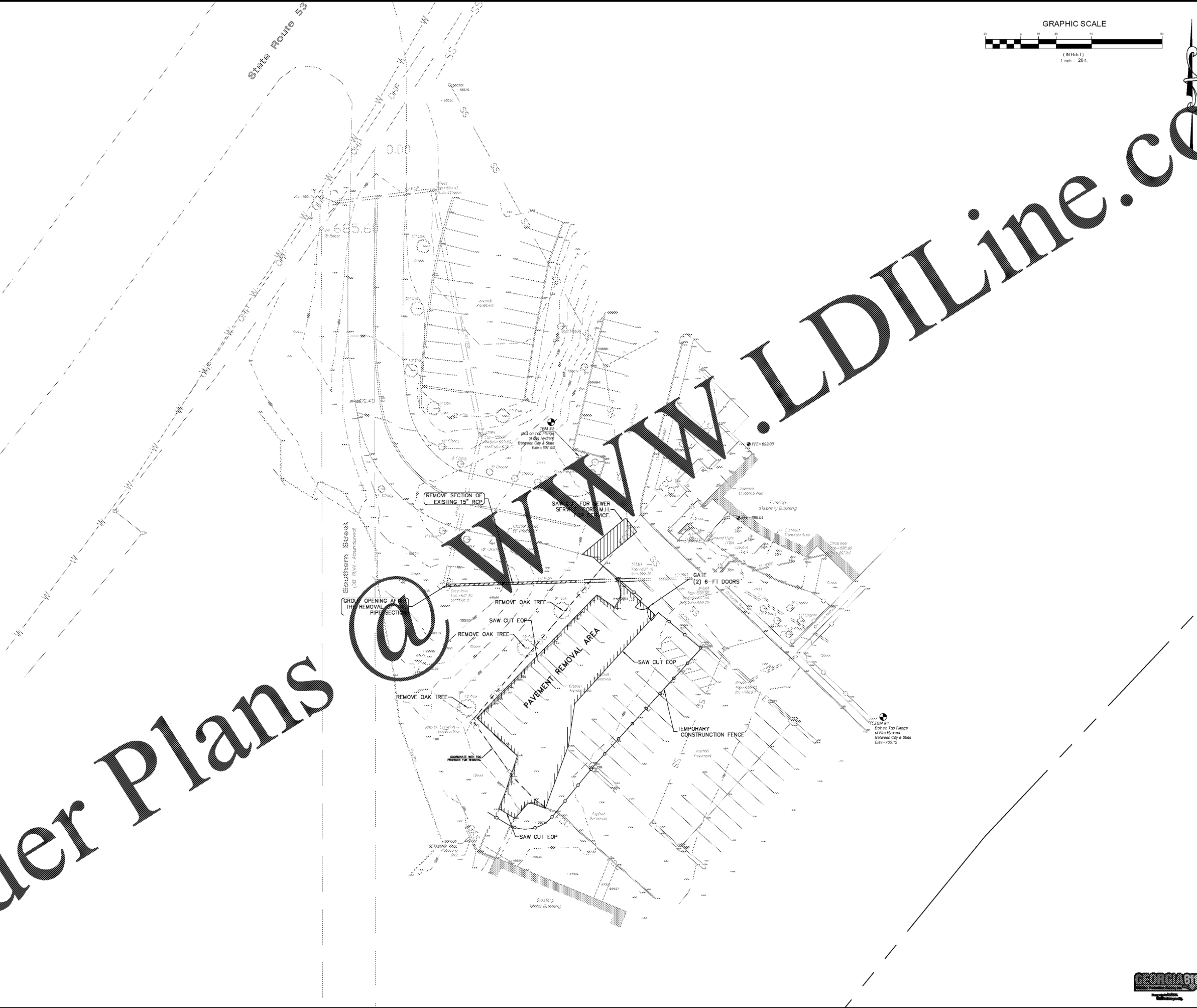
GSWCC NO. 3422

SHEET TITLE:
EXISTING CONDITIONS & DEMOLITION PLAN

DRAWING NO.:

C101

SYMBOL LEGEND	
⊕	STORM MANHOLE (STMH)
⊕	SEWAGE MANHOLE
⊕	WATER METER
⊕	FIRE HYDRANT
⊕	WATER VALVE
⊕	UTILITY POLE
⊕	TELEPHONE PEDESTAL
⊕	LIGHT POLE
⊕	SIGN
⊕	IRON PIN FOUND (IPF)
⊕	IRON PIN SET (IPS)
⊕	BENCHMARK
⊕	BUILDING SETBACK LINE
⊕	CENTERLINE
⊕	ROAD SIGN
⊕	EXISTING CONTOUR
⊕	STORM SEWER LINE
⊕	OVERHEAD POWER LINE
⊕	OVERHEAD TELEPHONE
⊕	UNDERGROUND TELEPHONE
⊕	WATER LINE
⊕	GAS LINE
⊕	CHAIN LINK FENCE
⊕	GLY WIRE
⊕	OPEN TOP PIPE
⊕	POINT OF BEGINNING
⊕	POINT OF COMMENCEMENT
⊕	RIGHT-OF-WAY
⊕	BOOK PAGE
⊕	BOOK PAGE
⊕	PARCEL NUMBER
⊕	TEMPORARY BENCHMARK
⊕	CORRUGATED METAL PIPE
⊕	REINFORCED CONCRETE PIPE
⊕	TOP OF WALL
⊕	TITLE EXCEPTION REFERENCE



Order Plans @ www.LDILine.com