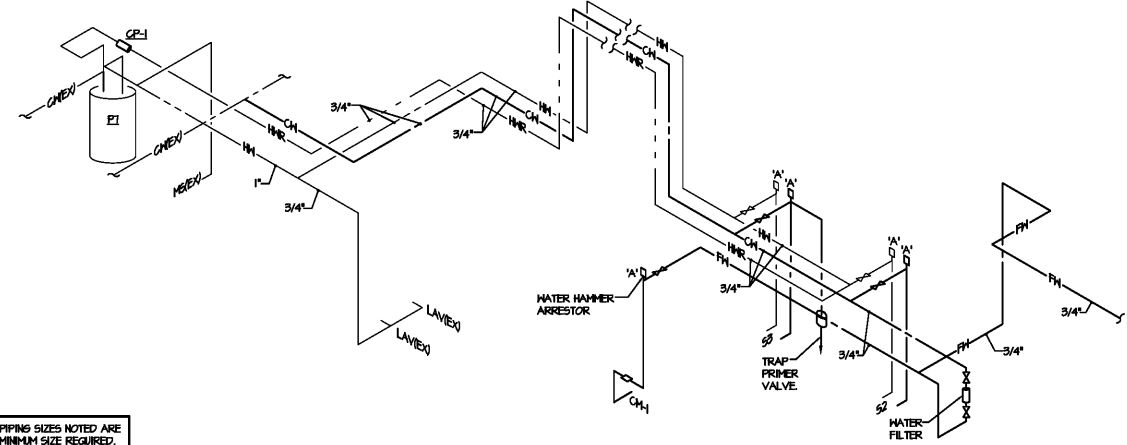
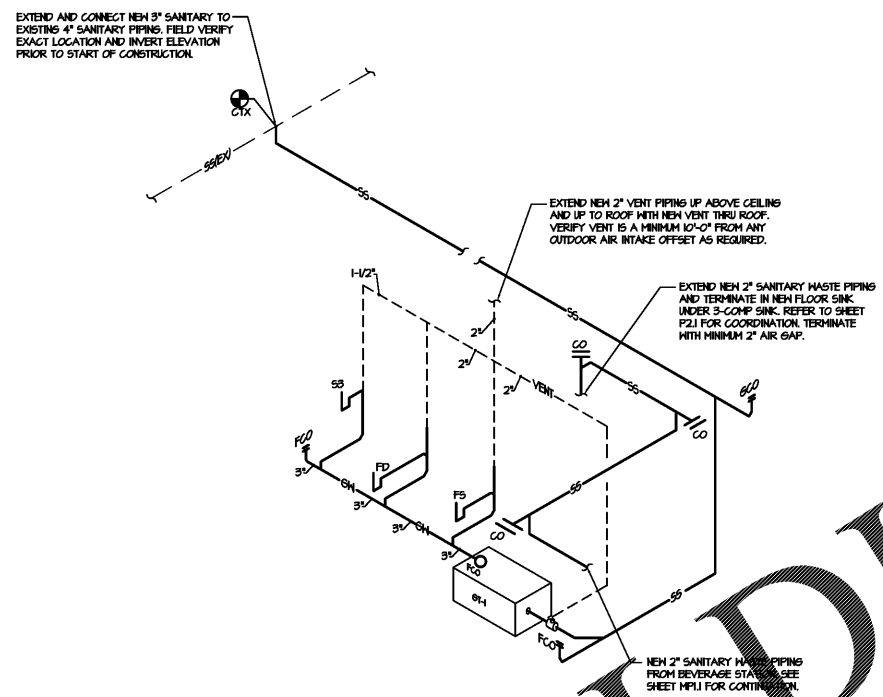


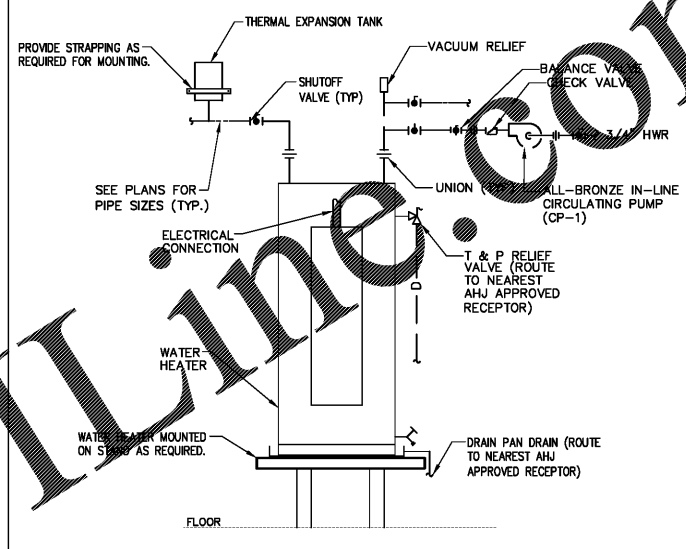
CONTRACTOR(S) SHALL VERIFY EXISTING CONDITIONS AND CORRELATE DIMENSIONS PRIOR TO PROVIDING THE WORK DETAILED IN THESE DRAWINGS, AND SHALL PROMPTLY NOTIFY THE ARCHITECT OF ANY DISCREPANCIES.



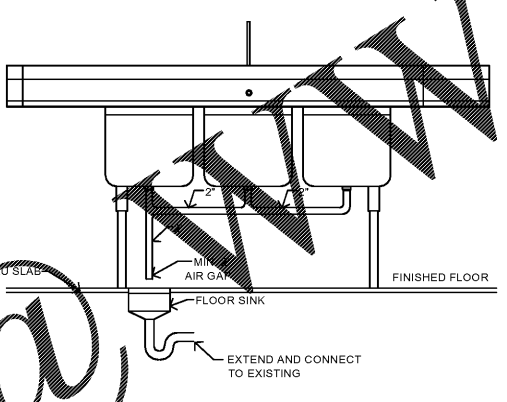
H & CW PIPING DIAGRAM
SCALE: NONE



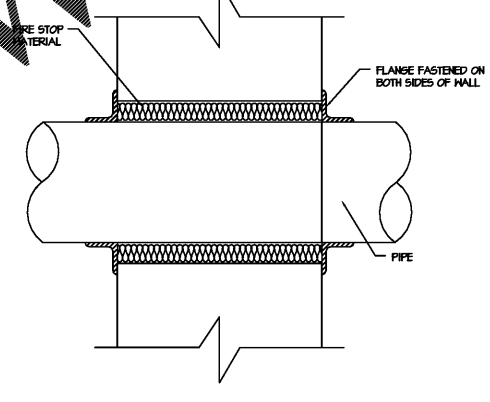
SANITARY STACK DIAGRAM
SCALE: NONE



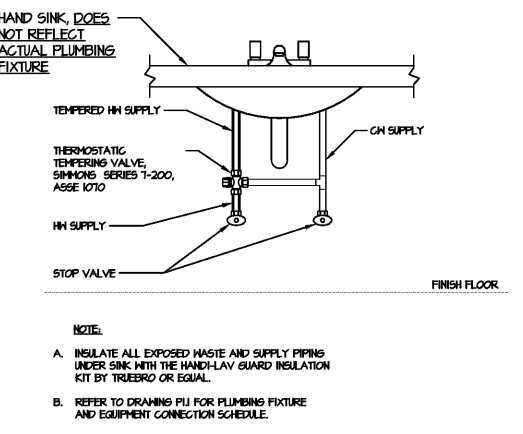
WATER HEATER PIPING DIAGRAM
SCALE: NONE



3-COMP SINK DETAIL
SCALE: NONE

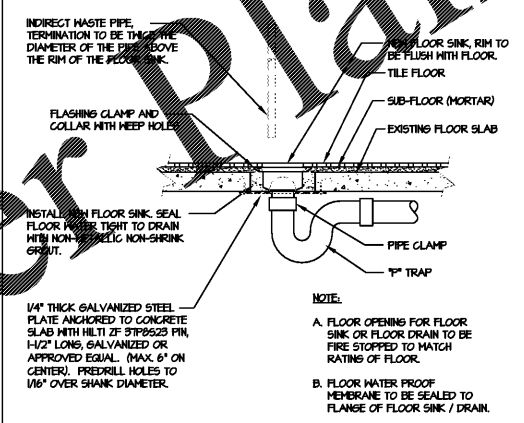


PIPE SEALING THRU FIRE RATED WALL
SCALE: NONE

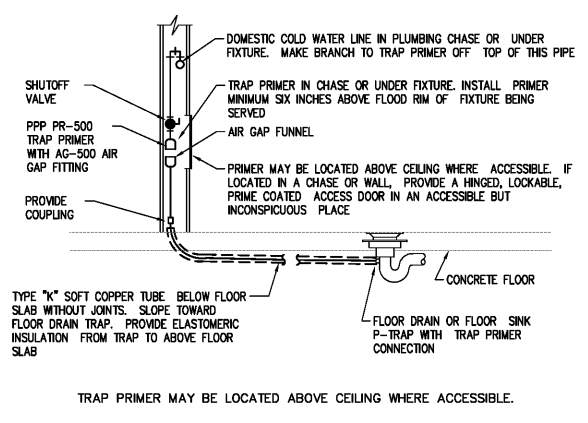


HAND SINK TEMPERING VALVE
SCALE: NONE

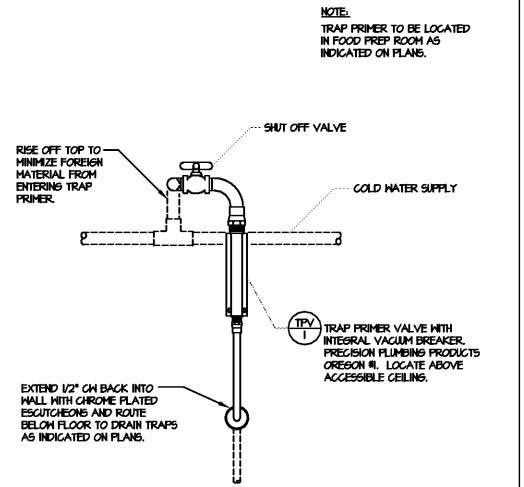
GREASE TRAP CALCULATIONS:
3 COMP. SINK = 48X20X21 = 11520 CUBIC INCHES
HAND SINK = 18X16X10 = 1400 CUBIC INCHES
1 GALLON = 231 CUBIC INCHES
ACTUAL DRAINAGE LOAD = .75 X 95.4 = 41.55 GAL
2 MINUTE PERIOD FLOW RATE = 21.0 GPM
TOTAL = 21.0 GPM REQUIRED



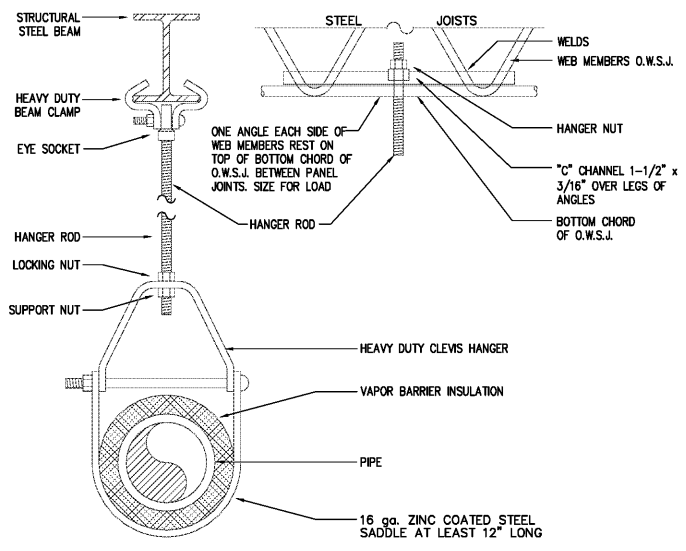
FLOOR SINK DETAIL
SCALE: NONE



FLOOR DRAIN WITH TRAP PRIMER
SCALE: NONE



TRAP PRIMER VALVE DETAIL
SCALE: NONE



PIPE HANGER DETAIL
SCALE: NONE

BED BATH & BEYOND
Beyond any store of its kind.
PROJECT NAME & LOCATION:
103 ALPHARETTA, GA
6050 NORTH POINT PARKWAY
ALPHARETTA, GA 30022
CORPORATE OFFICE:
UNION, NJ 07083
(908) 688-0888 (OFFICE)
(908) 688-0295 (FAX)

DISTRIBUTION:	DATE:
OWNER REVIEW	09/13/18
PERMIT SET	09/25/18
ARCH. PROJECT #	BBS PROJECT #
DRAWN:	CHECKED:
DC	JJ

DRAWING TITLE:
PLUMBING DETAILS
P3.1

Order Plans

1/2" = 1'