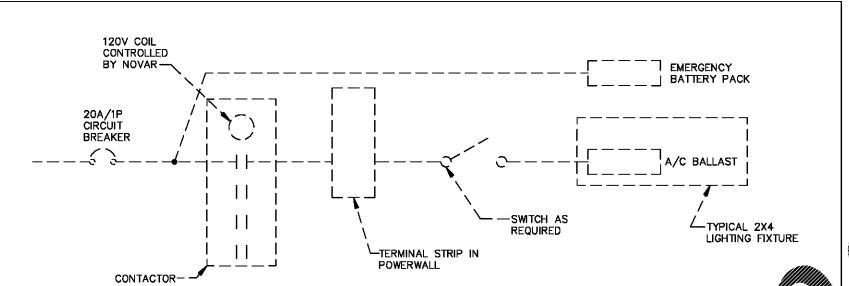
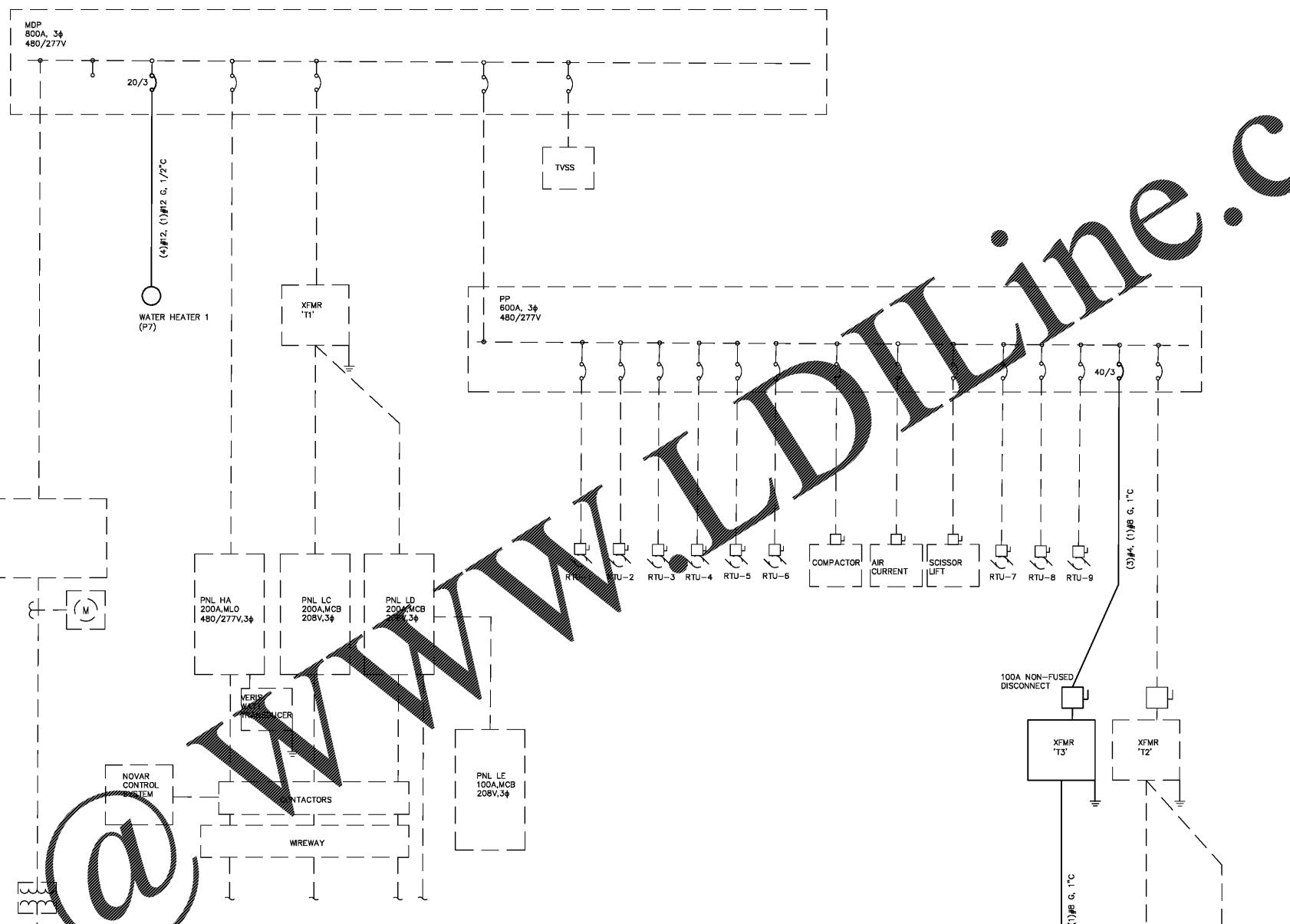


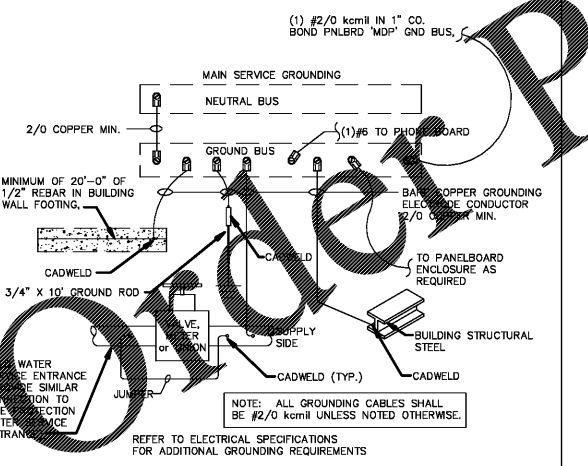
• CONTRACTOR(S) SHALL VERIFY EXISTING CONDITIONS AND CORRELATE DIMENSIONS PRIOR TO PROVIDING THE WORK DETAILED IN THESE DRAWINGS, AND SHALL PROMPTLY NOTIFY THE ARCHITECT OF ANY DISCREPANCIES.



www.LDOnline.com



EMERGENCY LIGHTING WIRING DETAIL 03
SCALE: NTS



GROUNDING DETAIL 15
SCALE: NTS

CONDUCTOR TABLE

CONTRACTOR SHALL FOLLOW AND APPLY THE TABLE BELOW, REGARDLESS WHAT THE PANEL SCHEDULE INDICATES, FOR SIZING ALL 120V AND 277V, 20 AMP BRANCH CIRCUIT COPPER CONDUCTORS TO ALLOW A MAXIMUM OF 3% VOLTAGE DROP ACROSS THE ENTIRE BRANCH CIRCUIT:

VOLTS	CONDUCTOR LENGTH**	HOMERUN	REMAINDER OF CIRCUIT
120	0' - 60'	#12	#12
120	60' - 105'	#10	#12
120	105' - 160'	#8	#10
120	160' - 250'	#6	#8
277	0' - 140'	#12	#12
277	140' - 240'	#10	#12
277	240' - 370'	#8	#10
277	370' - 570'	#6	#8

**THE LENGTH IS MEASURED FROM THE CIRCUIT BREAKER TO THE MIDDLE OF THE MULTI-DEVICE BRANCH CIRCUIT BETWEEN THE FIRST AND LAST DEVICE FOR WHICH THE CIRCUIT SERVES.

NOTE:
IT SHALL BE THE RESPONSIBILITY OF THE ELECTRICAL CONTRACTOR TO AMPROBE THE CIRCUIT PRIOR TO ADDING ADDITIONAL LOAD TO DETERMINE ADEQUATE CAPACITY. NO RECEPTACLE BRANCH CIRCUIT SHALL EXCEED 16 AMPS.

- ELECTRICAL NOTES:**
- CONTRACTOR TO RELOCATE EXISTING BREAKERS AS NEEDED.

EXISTING PARTIAL ONE-LINE DIAGRAM 01
SCALE: NTS

BED BATH & BEYOND
Beyond any store of its kind.
PROJECT NAME & LOCATION:
103 ALPHARETTA, GA
6050 NORTH POINT PARKWAY
ALPHARETTA, GA 30022

BED BATH & BEYOND
CORPORATE OFFICES:
650 LIBERTY AVE
UNION, NJ 07083
(908) 688-0888 (OFFICE)
(908) 688-0295 (FAX)

DISTRIBUTION	DATE
OWNER REVIEW	09/13/18
PERMIT SET	09/25/18

DRAWING TITLE:
RISER DIAGRAM AND NOTES.
E5.0