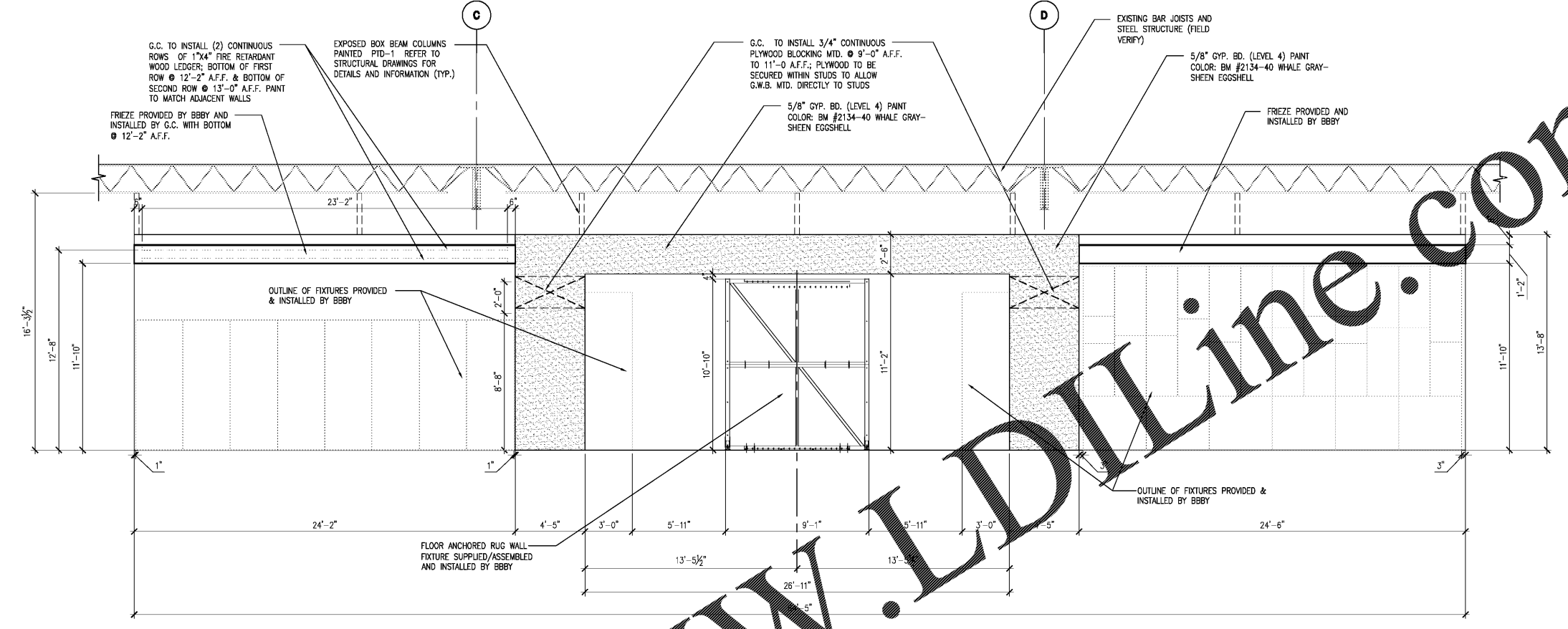
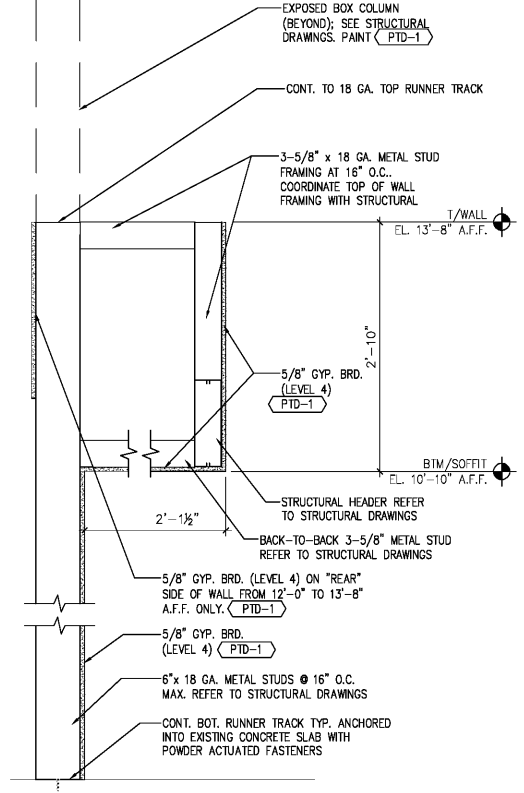


CONTRACTOR(S) SHALL VERIFY EXISTING CONDITIONS AND CORRELATE DIMENSIONS PRIOR TO PROVIDING THE WORK DETAILED IN THESE DRAWINGS, AND SHALL PROMPTLY NOTIFY THE ARCHITECT OF ANY DISCREPANCIES.



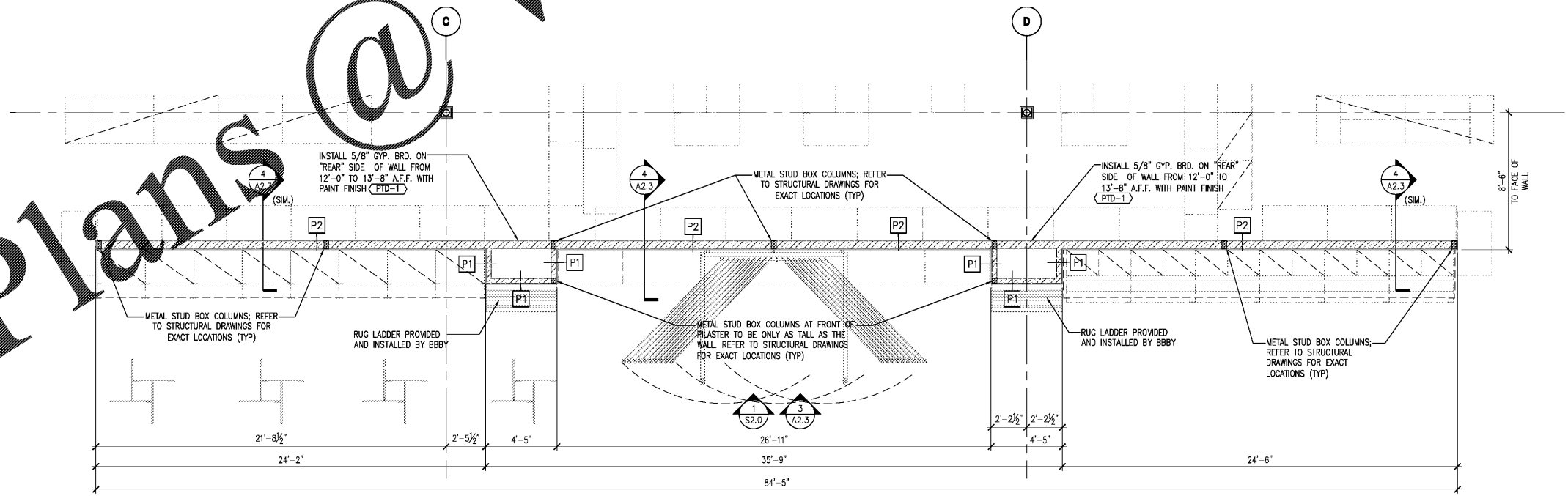
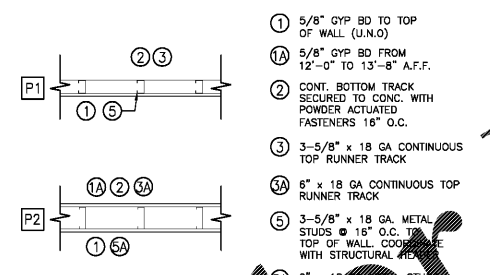
WALL DETAIL

04 CHAIR/RUG/LIGHTING WALL FRONT ELEVATION

03

SCALE: 1" = 1'-0"

SCALE: 1/4" = 1'-0"



WALL TYPE

02 CHAIR/RUG/LIGHTING WALL - PLAN VIEW

01

SCALE: NTS

SCALE: 1/4" = 1'-0"



DD'S	PERMIT SET

BED BATH & BEYOND
 Beyond any store of its kind.
 PROJECT NAME & LOCATION:
 # 103 ALPHARETTA, GA
 6050 NORTH POINT PARKWAY
 ALPHARETTA, GA 30022
 BED BATH & BEYOND CORPORATE OFFICES:
 650 LIBERTY AVE
 UNION, NJ 07083
 (908) 688-0888 (OFFICE)
 (908) 688-0295 (FAX)

DISTRIBUTION	DATE
OWNER REVIEW	09/13/18
PERMIT SET	09/25/18

ARCH. PROJECT#	BBB PROJECT#

DRAWING TITLE:
 ENLARGED RUG WALL FLOOR PLAN AND ELEVATION
A2.3