

**A PANELBOARD** (EXISTING) 208Y/120V, 3PH, 4W 400A M.C.B. --- AIC GROUND BUS

MOUNTING: SURFACE LOCATION: BACK OF HOUSE

DESCRIPTION	WIRE	BRKR	PL	KVA			PL	BRKR	WIRE	DESCRIPTION	PL	BRKR	WIRE	
				A	B	C								
				12.58	11.70	6.68	3	175		existing panel b				
1 rtu -1		50	3	4.68	1.97		2	35	8	WALK-IN COOLER EVAP (6)	2			
3 existing to remain				4.68	1.97		1	20		SPARE	4			
5						4.68	1	20		SPARE	6			
7 rtu -2		45	3	3.96	0.56		1	20	12	WALK-IN COOLER LTG	8			
9 existing to remain				3.96			1	20		SPARE	10			
11						3.96	1	20		SPARE	12			
13 OVEN TOP	12	20	1	0.72	1.34		3	20	12	MAU-CONDENSER #1	14			
15 OVEN MIDDLE	12	20	1		0.72	1.34					16			
17 OVEN BOTTOM	12	20	1			0.72	1.34				18			
19 OVEN CONTROLLER	12	20	1	0.50			1	20		SPARE	20			
21 DOORBELL	12	20	1		0.36	0.63		2	20	MAU-1 FAN MOTOR	22			
23 BACK OF HOUSE RECEPT (2)	12	20	1			0.18	0.63				24			
25 VFD CONTROLLER (5)	12	20	2	0.26				1	20	SPARE	26			
27					0.26			1	20	SPARE	28			
29						0.26		1	20	SPARE	30			
31 WH IGNITER (2)	12	20	1	0.18				1	20	SPARE	32			
33								1	20	SPARE	34			
35								1	20	SPARE	36			
37 SURGE PROTECTION	10	30	3		3.92			3	100	existing panelboard c	38			
39						4.93					40			
41						4.31					42			
TOTAL				30.67	30.55	22.50	KVA							
PER NEC ARTICLE 220				256	255	188	AMPS							
TOTAL LOAD				83.72		233	AMPS							
FEEDER LOAD				81.61		227	AMPS							

Total VA per system

1) General Receptacles - 1st 10,000VA	=	8,360	x	1.00	=	8,360
2) General Receptacles - over 10,000VA	=		x	0.50	=	
3) Kitchen Equipment	=	13,631	x	0.65	=	8,860
4) Lighting	=	10,643	x	1.25	=	13,303
5) HVAC	=	36,187	x	1.00	=	36,187
6) Refrigeration	=		x	1.00	=	
7) Continuous	=		x	1.25	=	
8) Non-Continuous	=	14,900	x	1.00	=	14,900
9) Spare	=		x	1.00	=	
10) Largest Motor	=		x	0.25	=	
Total VA per system	=	83,721			=	81,611
Panelboard voltage	=	360			=	360
Total Connected Load (amperes)	=	233			=	227
Total Diversified Load (amperes)	=				=	227

**B PANELBOARD** (EXISTING) 208Y/120V, 3PH, 4W 225A M.L.O. --- AIC GROUND BUS

MOUNTING: SURFACE LOCATION: BACK OF HOUSE

DESCRIPTION	WIRE	BRKR	PL	KVA			PL	BRKR	WIRE	DESCRIPTION	PL	BRKR	WIRE	
				A	B	C								
1 DOUGH TABLE RECEPT	12	20	1	0.18	0.18		1	20	12	REAR DOOR ALERT	2			
3 SPARE						1.20	0.18		1	20	12			
5 SPARE						1.20	0.52		1	20	12			
7 HEAT LAMP	12	20	1	0.68	0.52			1	20	12				
9 SPARE						1.20	1.20		1	20	10			
11 HEAT LAMP	12	20	1			0.68	1.16		1	20	10			
13 OFFICE RECEPT	12	20	1	0.36	1.40			1	20	12				
15 DED HEAT LAMP RECEPT	12	20	1			1.40	0.18		1	20	12			
17 HEAT LAMP	12	20	1			0.68	0.36		1	20	12			
19 EXTERIOR RECEPT	8	50	2	5.80				1	20					
21					5.80			1	20					
23 OFFICE RECEPTS	12	20	1			0.54	1.55		1	20	10			
25 EXTERIOR RECEPT	12	20	1	1.92	1.55			1	20	10				
27						0.54		1	20	12				
29								1	20	12				
31								1	20	12				
33								1	20	12				
35								1	20	12				
37								1	20	12				
39								1	20	12				
41								1	20	12				
TOTAL				12.58	11.70	6.68	KVA							
PANELBOARD TOTALS CALCULATED				98			AMPS							
PER NEC ARTICLE 222				30.5		88	AMPS							
FEEDER LOAD				28.68		80	AMPS							

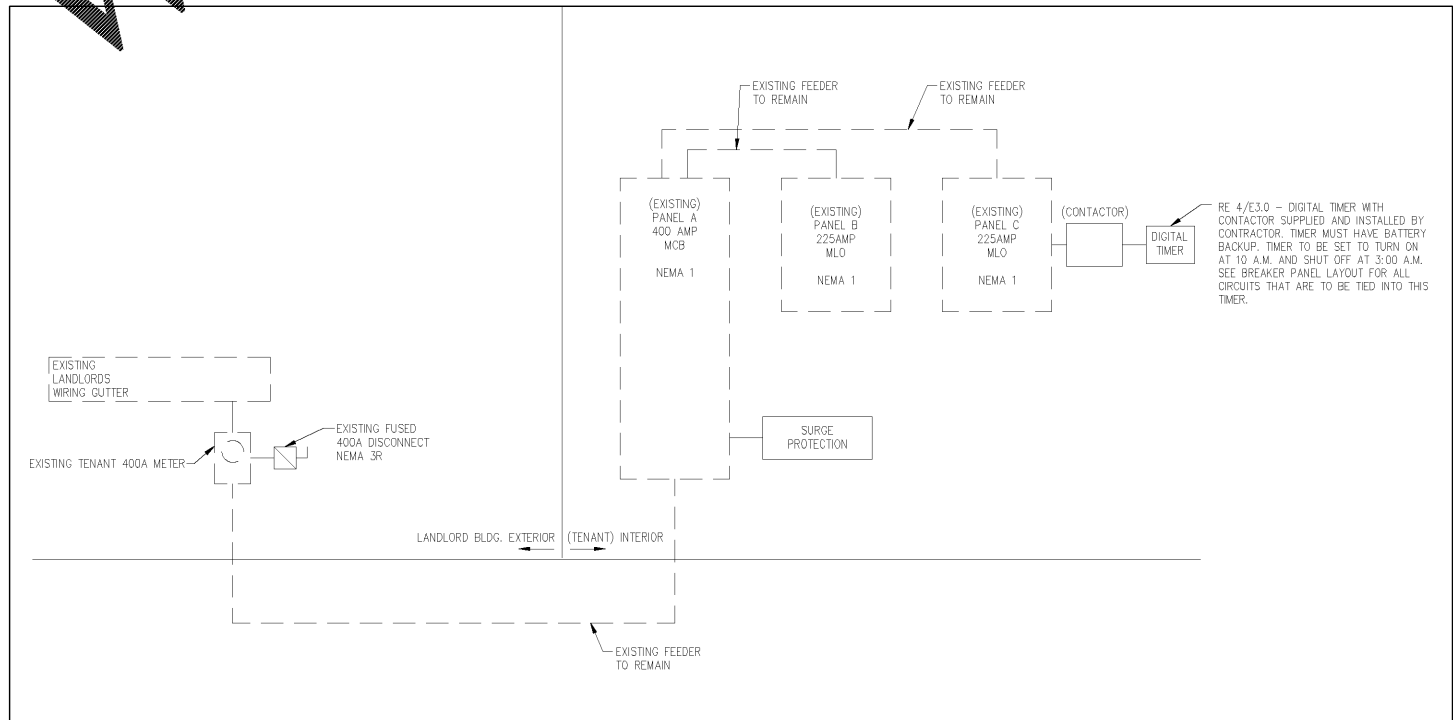
**C PANELBOARD** (EXISTING) 208Y/120V, 3PH, 4W 225A M.L.O. 10,000 AIC GROUND BUS ISOLATED GROUND

MOUNTING: SURFACE LOCATION: BACK OF HOUSE

DESCRIPTION	WIRE	BRKR	PL	KVA			PL	BRKR	WIRE	DESCRIPTION	PL	BRKR	WIRE	
				A	B	C								
1 INTERIOR LIGHTING (3)	12	20	1	0.54	0.50		1	20	12	MONITORS (1)	2			
3 INTERIOR LIGHTING (3)	12	20	1			0.83		1	20	SPARE	4			
5 PULSE STATIONS (1)	12	20	1				0.72	0.54	1	20	12			
7 PRINTER / LABELER (1)	12	20	1	0.18	0.54				1	20	12			
9 CAMERA SYSTEM MONITOR (1)	12	20	1			0.50	0.36		1	20	12			
11 MENU BOARD	12	20	1				0.28	0.60	1	20	12			
13 MENU BOARD	12	20	1	0.28	0.54				1	20	12			
15 existing building mounted lts (3)	12	20	1			0.92	0.75		1	20	12			
17 PULSE STATIONS (1)	12	20	1				0.36	0.60	1	20	12			
19 ELECTRIC DOOR STRIKE XFMR	12	20	1	0.10					1	20				
21 OFFICE RECEPTS (1)	12	20	1			0.36			1	20				
23 PUSHBUTTON CONTROLLER	12	20	1				0.01		1	20				
25 EXTERIOR WALL PACKS (3)	12	20	1	0.03					1	20				
27 TIMECLOCK (3)	12	20	1			0.01			1	20				
29 BUILDING SIGNAGE (3.5)	10	20	1				1.20		1	20				
31 BUILDING SIGNAGE (3.5)	10	20	1	1.20					1	20				
33 BUILDING SIGNAGE (3.5)	10	20	1			1.20			1	20				
35									1	20				
37									1	20				
39									1	20				
41									1	20				
TOTAL				3.92	4.93	4.31	KVA							
PER NEC ARTICLE 220				33	42	36	AMPS							
TOTAL LOAD				13.15		37	AMPS							
FEEDER LOAD				14.11		40	AMPS							

- PANELBOARD NOTES ( )**
1. TERMINATE GROUND ON ISOLATED GROUND.
  2. GFI BREAKER.
  3. CONTROL VIA TIME CLOCK.
  4. REF ONE-LINE DIAGRAM FOR WIRE SIZES.
  5. PROVIDE LOCKING DEVICE (LOCK OFF FOR MAINTENANCE)
  6. CONDUCTOR SIZE INCREASE DUE TO VOLTAGE DROP. SIZE EQUIPMENT GROUND CONDUCTOR PROPORTIONALLY PER NEC.

WWW.LDIDLINE.COM



01 RISER DIAGRAM

PROJECT COORDINATOR/DESIGN CONSULTANT

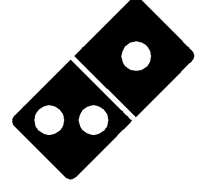


MPW ENGINEERING, LLC  
110 W. 7TH STREET • SUITE 600 • TULSA, OK 74105  
TEL: 918-582-4444 • FAX: 918-582-4444



CLIENT PROJECT # 5879  
ARCHITECTURAL PROJECT NO.: 385-071  
DRAWN BY: DJW  
CHECKED BY: JSR

DOMINO'S PIZZA  
30 FRANK LLOYD WRIGHT DRIVE  
ANN ARBOR, MI 48105  
TEL: 314.910.8560



**Domino's**  
DOMINO'S PIZZA #5879  
3871 AIRPORT BLVD.  
MOBILE, AL 36608

NO.	REVISIONS	DATE

PLANNING REVIEW ISSUE DATE: N/A  
CLIENT REVIEW ISSUE DATE: 09/13/2018  
LANDLORD REVIEW ISSUE DATE: 09/13/2018  
BID ISSUE DATE: 09/24/2018  
HEALTH DEPT. REVIEW ISSUE DATE: 09/24/2018  
BUILDING REVIEW ISSUE DATE: 09/24/2018  
CONSTRUCTION ISSUE DATE: 09/24/2018

DRAWING TITLE:  
ONE-LINE & SCHEDULES

DRAWING NUMBER:  
**E4.0**

Order Plans