

503.2 PASSENGER LOADING ZONES. PASSENGER LOADING ZONES SHALL PROVIDE A VEHICULAR PULL-UP SPACE 94 INCHES (2400 MM) WIDE MINIMUM AND OR FEET (1810 MM) LONG MINIMUM.

503.3 ACCESS AISLES. PASSENGER LOADING ZONES SHALL PROVIDE ACCESS AISLES COMPLYING WITH 503 ADJACENT TO THE VEHICULAR PULL-UP SPACE. ACCESS AISLES SHALL ADJOIN AN ACCESSIBLE ROUTE AND SHALL NOT OVERLAP THE VEHICULAR PULL-UP SPACE.

503.3.1 WIDTH. ACCESS AISLES SERVING VEHICULAR PULL-UP SPACES SHALL BE 60 INCHES (1525 MM) WIDE MINIMUM.

503.3.2 LENGTH. ACCESS AISLES SHALL EXTEND THE FULL LENGTH OF THE VEHICULAR PULL-UP SPACES THEY SERVE.

503.3.3 MARKING. ACCESS AISLES SHALL BE MARKED SO AS TO DISCOURAGE PARKING IN THEM.

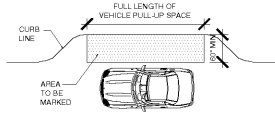


FIGURE 503.3 PASSENGER LOADING ZONE ACCESS AISLE

503.4 FLOOR AND GROUND SURFACES. VEHICULAR PULL-UP SPACES AND ACCESS AISLES SERVING THEM SHALL COMPLY WITH 302. ACCESS AISLES SHALL BE AT THE SAME LEVEL AS THE VEHICULAR PULL-UP SPACE THEY SERVE. CHANGES IN LEVEL ARE NOT PERMITTED.

EXCEPTION: SLOPES NOT STEEPER THAN 1:48 SHALL BE PERMITTED.

503.5 VERTICAL CLEARANCE. VEHICULAR PULL-UP SPACES, ACCESS AISLES SERVING THEM, AND A VEHICULAR ROUTE FROM AN ENTRANCE TO THE PASSENGER LOADING ZONE, AND FROM THE PASSENGER LOADING ZONE TO A VEHICULAR EXIT SHALL PROVIDE A VERTICAL CLEARANCE OF 114 INCHES (2895 MM) MINIMUM.

504 STAIRWAYS

504.1 GENERAL. STAIRS SHALL COMPLY WITH 504.

504.2 TREADS AND RISES. ON A FLIGHT OF STAIRS SHALL HAVE UNIFORM RISER HEIGHTS AND UNIFORM TREAD DEPTHS. RISERS SHALL BE 4 INCHES (100 MM) HIGH MINIMUM AND 7 INCHES (180 MM) HIGH MAXIMUM. TREADS SHALL BE 11 INCHES (280 MM) DEEP MINIMUM.

504.3 RISERS ARE NOT LIMITED. RISERS ARE NOT LIMITED TO 7 INCHES (178 MM) MAXIMUM.

504.4 TREAD SURFACE. STAIR TREADS SHALL COMPLY WITH 302. CHANGES IN LEVEL ARE NOT PERMITTED.

EXCEPTION: TREADS SHALL BE PERMITTED TO HAVE A SLOPE NOT STEEPER THAN 1:48.

ADVISORY 504.4 TREAD SURFACE. CONSIDER PROVIDING VISUAL CONTRAST ON TREAD NOSINGS, OR AT THE LEADING EDGES OF TREADS WITHOUT NOSINGS, SO THAT STAIR TREADS ARE MORE VISIBLE FOR PEOPLE WITH LOW VISION.

504.5 NOSINGS. THE RADIUS OF CURVATURE AT THE LEADING EDGE OF THE TREAD SHALL BE 1/2 INCH (13 MM) MAXIMUM. NOSINGS THAT PROJECT BEYOND RISERS SHALL HAVE THE UNDERSIDE OF THE LEADING EDGE CURVED OR BEVELLED. RISERS SHALL BE PERMITTED TO SLOPE UNDER THE TREAD AT AN ANGLE OF 30 DEGREES MAXIMUM FROM VERTICAL. THE PERMITTED PROJECTION OF THE NOSING SHALL EXTEND 1 1/2 INCHES (38 MM) MAXIMUM OVER THE TREAD BELOW.

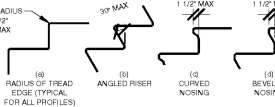


FIGURE 504.5 STAIR NOSINGS

504.6 HANDRAILS. STAIRS SHALL HAVE HANDRAILS COMPLYING WITH 505.

504.7 WEAR CONDITIONS. STAIR TREADS AND LANDINGS SUBJECT TO WEAR CONDITIONS SHALL BE DESIGNED TO PREVENT THE ACCUMULATION OF WATER.

505 HANDRAILS

ADVISORY 505.1 GENERAL. HANDRAILS ARE REQUIRED ON RAMP RUNS WITH A RISE GREATER THAN 8 INCHES (150 MM) (SEE 405.6) AND ON CERTAIN STAIRWAYS (SEE 504). HANDRAILS ARE NOT REQUIRED ON WALKING SURFACES WITH RUNNING SLOPES LESS THAN 1:20. HOWEVER, HANDRAILS ARE REQUIRED TO COMPLY WITH 505 WHEN THEY ARE PROVIDED ON WALKING SURFACES WITH RUNNING SLOPES LESS THAN 1:20 (SEE 403.6). SECTIONS 505.2, 505.3, AND 505.10 DO NOT APPLY TO HANDRAILS PROVIDED ON WALKING SURFACES WITH RUNNING SLOPES LESS THAN 1:20 AS THESE SECTIONS ONLY REFERENCE REQUIREMENTS FOR RAMPS AND STAIRS.

505.2 WHERE REQUIRED, HANDRAILS SHALL BE PROVIDED ON BOTH SIDES OF STAIRS AND RAMPS.

EXCEPTION: IN ASSEMBLY AREAS, HANDRAILS SHALL NOT BE REQUIRED ON BOTH SIDES OF AISLE RAMPS WHERE A HANDRAIL IS PROVIDED AT EITHER SIDE OR WITHIN THE AISLE WIDTH.

505.3 CONTINUITY. HANDRAILS SHALL BE CONTINUOUS WITHIN THE FULL LENGTH OF EACH STAIR FLIGHT OR RAMP RUN, INCLUDING SWITCHBACK OR DOGLEG STAIRS AND RAMPS SHALL BE CONTINUOUS BETWEEN FLIGHTS OR RUNS.

EXCEPTION: IN ASSEMBLY AREAS, HANDRAILS ON RAMPS SHALL NOT BE REQUIRED TO BE CONTINUOUS IN ASSEMBLY AREAS.

505.4 HEIGHT, TOP OF GRIPPING SURFACES OF HANDRAILS SHALL BE 34 INCHES (865 MM) MINIMUM AND 38 INCHES (965 MM) MAXIMUM VERTICALLY ABOVE WALKING SURFACES, STAIR NOSINGS, AND RAMP SURFACES. HANDRAILS SHALL BE AT A CONSISTENT HEIGHT ABOVE WALKING SURFACES, STAIR NOSINGS, AND RAMP SURFACES.

ADVISORY 505.4 HEIGHT. THE REQUIREMENTS FOR STAIR AND RAMP HANDRAILS IN THIS DOCUMENT ARE FOR ADULTS. WHEN CHILDREN ARE THE PRINCIPAL USERS IN A BUILDING OR FACILITY (E.G., ELEMENTARY SCHOOLS), A SECONDARY SET OF HANDRAILS AT AN APPROPRIATE HEIGHT CAN ASSIST THEM AND AID IN PREVENTING ACCIDENTS. A MAXIMUM HEIGHT OF 28 INCHES (710 MM) MEASURED TO THE TOP OF THE GRIPPING SURFACE FROM THE RAMP SURFACE OR STAIR NOSING IS RECOMMENDED FOR CHILDREN. SUFFICIENT VERTICAL CLEARANCE BETWEEN UPPER AND LOWER HANDRAILS, 9 INCHES (230 MM) MINIMUM, SHOULD BE PROVIDED TO HELP PREVENT ENTRAPMENT.

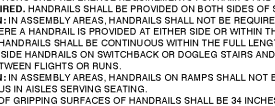


FIGURE 505.4 HANDRAIL HEIGHT

505.5 CLEARANCE. CLEARANCE BETWEEN HANDRAIL, GRIPPING SURFACES AND ADJACENT SURFACES SHALL BE 1 1/2 INCHES (38 MM) MINIMUM.

505.6 GRIPPING SURFACES. GRIPPING SURFACES SHALL BE CONTINUOUS ALONG THEIR LENGTH AND SHALL NOT BE OBSTRUCTED ALONG THEIR TOPS OR SIDES. THE BOTTOMS OF HANDRAIL GRIPPING SURFACES SHALL NOT BE OBSTRUCTED FOR MORE THAN 20 PERCENT OF THEIR LENGTH, WHERE OBSTRUCTION OCCURS. CLEARANCE BETWEEN GRIPPING SURFACES SHALL BE 1 1/2 INCHES (38 MM) MINIMUM BELOW THE BOTTOM OF THE HANDRAIL GRIPPING SURFACE.

EXCEPTIONS:

- WHERE HANDRAILS ARE PROVIDED ALONG WALKING SURFACES WITH SLOPES NOT STEEPER THAN 1:20, THE BOTTOMS OF HANDRAIL GRIPPING SURFACES SHALL BE PERMITTED TO BE OBSTRUCTED ALONG THEIR ENTIRE LENGTH WHERE THEY ARE INTEGRAL TO CRASH RAILS OR BUMPER GUARDS.
- THE DISTANCE BETWEEN HORIZONTAL PROJECTIONS AND THE BOTTOM OF THE GRIPPING SURFACE SHALL BE PERMITTED TO BE REDUCED BY 1/8 INCH (3.2 MM) FOR EACH 1/2 INCH (13 MM) OF ADDITIONAL HANDRAIL PERIMETER DIMENSION THAT EXCEEDS 4 INCHES (100 MM).

ADVISORY 505.6 GRIPPING SURFACES. PEOPLE WITH DISABILITIES, OLDER PEOPLE, AND OTHERS BENEFIT FROM CONTINUOUS GRIPPING SURFACES THAT PERMIT USERS TO REACH THE FINGERS OUTWARD OR DOWNWARD TO GRASP THE HANDRAIL, PARTICULARLY AS THE USER SENSES A LOSS OF EQUILIBRIUM OR BEGINS TO TIRE.

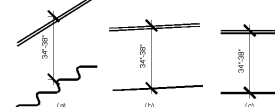


FIGURE 505.5 CLEARANCE

505.7 CROSS SECTION. HANDRAIL GRIPPING SURFACES SHALL HAVE A CROSS SECTION COMPLYING WITH 505.7.1 OR 505.7.2.

505.7.1 CIRCULAR CROSS SECTION. HANDRAIL GRIPPING SURFACES WITH A CIRCULAR CROSS SECTION SHALL HAVE AN OUTSIDE DIAMETER OF 1 1/4 INCHES (32 MM) MINIMUM AND 2 INCHES (51 MM) MAXIMUM.

505.7.2 NON-CIRCULAR CROSS SECTIONS. HANDRAIL GRIPPING SURFACES WITH A NON-CIRCULAR CROSS SECTION SHALL HAVE A PERIMETER DIMENSION OF 4 INCHES (100 MM) MINIMUM AND A 5/16 INCH (8.0 MM) MAXIMUM, AND A CROSS-SECTION DIMENSION OF 2 1/4 INCHES (57 MM) MAXIMUM.

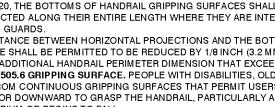


FIGURE 505.7 CROSS SECTION

505.8 SURFACES. HANDRAIL GRIPPING SURFACES AND ANY SIGN OR IDENTIFICATION SYSTEM SHALL BE FREE OF SHARP OR ABRASIVE ELEMENTS AND SHALL BE SMOOTH TO THE TOUCH.

505.9 FITTINGS. HANDRAILS SHALL NOT ROTATE WITHIN THE FITTED AREA.

505.10 HANDRAIL EXTENSIONS. HANDRAIL GRIPPING SURFACES SHALL EXTEND BEYOND THE SAME DIRECTION OF STAIR FLIGHTS AND RAMP RUNS AS THE STAIRS OR RAMPS WITH 505.8.

EXCEPTIONS:

- EXTENSIONS SHALL NOT BE REQUIRED TO BE CONTINUOUS AT THE INSIDE TURN OF SWITCHBACK OR DOGLEG STAIRS AND RAMPS.
- IN ASSEMBLY AREAS, EXTENSIONS SHALL NOT BE REQUIRED ON RAMP HANDRAILS IN AISLES SERVING SEATING AREAS. EXTENSIONS SHALL BE CONTINUOUS TO PROVIDE ACCESS TO SEATING AREAS.
- EXTENSIONS OF HANDRAILS SHALL NOT BE REQUIRED WHERE SUCH EXTENSIONS WOULD INTERFERE WITH PLANNED CONFIGURATION.



FIGURE 505.10 TOP AND BOTTOM HANDRAIL EXTENSION AT RAMPS

505.11 TOP AND BOTTOM HANDRAIL EXTENSION AT RAMPS. HANDRAILS SHALL EXTEND HORIZONTALLY ABOVE THE LEVEL OF THE RAMP RUNS 12 INCHES (305 MM) MINIMUM FROM THE TOP AND BOTTOM OF RAMP RUNS. EXTENSIONS SHALL RETURN TO THE RAMP RUN OR THE LANDING SURFACE, OR SHALL BE CONTINUOUS TO THE HANDRAIL OR AN ADJACENT RAMP RUN.

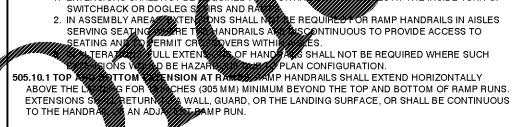


FIGURE 505.11 TOP AND BOTTOM HANDRAIL EXTENSION AT RAMPS

505.10.2 TOP EXTENSION AT STAIRS. AT THE TOP OF A STAIR FLIGHT, HANDRAILS SHALL EXTEND HORIZONTALLY ABOVE THE LANDING FOR 12 INCHES (305 MM) MINIMUM BEGINNING DIRECTLY ABOVE THE FIRST RISER NOSING AND ENDING AT A WALL, QUAIL, OR THE LANDING SURFACE, OR SHALL BE CONTINUOUS TO THE HANDRAIL OF AN ADJACENT STAIR FLIGHT.

505.10.3 BOTTOM EXTENSION AT STAIRS. AT THE BOTTOM OF A STAIR FLIGHT, HANDRAILS SHALL EXTEND AT THE SLOPE OF THE STAIR FLIGHT FOR A HORIZONTAL DISTANCE AT LEAST EQUAL TO ONE TREAD DEPTH BEYOND THE LAST RISER NOSING. EXTENSIONS SHALL RETURN TO A WALL, QUAIL, OR THE LANDING SURFACE, OR SHALL BE CONTINUOUS TO THE HANDRAIL OF AN ADJACENT STAIR FLIGHT.

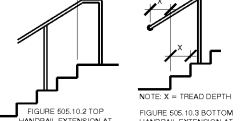


FIGURE 505.10.2 TOP EXTENSION AT STAIRS

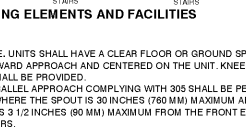


FIGURE 505.10.3 BOTTOM EXTENSION AT STAIRS

CHAPTER 6: PLUMBING ELEMENTS AND FACILITIES

602 DRINKING FOUNTAINS

602.2 CLEAR FLOOR SPACE. UNITS SHALL HAVE A CLEAR FLOOR OR GROUND SPACE COMPLYING WITH 305 POSITIONED FOR A FORWARD APPROACH AND CENTERED ON THE UNIT. KNEE AND TOE CLEARANCE COMPLYING WITH 306. THE CLEARANCE SHALL BE PERMITTED TO BE REDUCED TO 30 INCHES (760 MM) MINIMUM ABOVE THE FINISH FLOOR OR GROUND.

EXCEPTION: A PARALLEL APPROACH COMPLYING WITH 305 SHALL BE PERMITTED AT UNITS FOR CHILDREN'S USE WHERE THE SPOUT IS 30 INCHES (760 MM) MAXIMUM ABOVE THE FINISH FLOOR OR GROUND AND THE SPOUT IS 1/2 INCHES (9.5 MM) MAXIMUM FROM THE FRONT EDGE OF THE UNIT, INCLUDING BUMPERS.

602.3 OPERABLE PARTS. OPERABLE PARTS SHALL COMPLY WITH 309.

602.4 SPOUT HEIGHT. SPOUT OUTLETS SHALL BE 36 INCHES (915 MM) MAXIMUM ABOVE THE FINISH FLOOR OR GROUND.

602.5 SPOUT LOCATION. THE SPOUT SHALL BE LOCATED 15 INCHES (380 MM) MINIMUM FROM THE VERTICAL SUPPORT AND 5 INCHES (125 MM) MAXIMUM FROM THE FRONT EDGE OF THE UNIT, INCLUDING BUMPERS.



FIGURE 602.4 SPOUT HEIGHT

602.6 WATER FLOW. THE SPOUT SHALL PROVIDE A FLOW OF WATER 4 INCHES (100 MM) HIGH MINIMUM AND SHALL BE LOCATED 5 INCHES (125 MM) MAXIMUM FROM THE FRONT OF THE UNIT. THE ANGLE OF THE WATER STREAM SHALL BE EXTENDED HORIZONTALLY RELATIVE TO THE FRONT FACE OF THE UNIT. WHERE SPOUTS ARE LOCATED 2 INCHES (51 MM) FROM THE FRONT OF THE UNIT, THE ANGLE OF THE WATER STREAM SHALL BE 30 DEGREES MAXIMUM. WHERE SPOUTS ARE LOCATED BETWEEN 3 INCHES (75 MM) AND 5 INCHES (125 MM) MAXIMUM FROM THE FRONT OF THE UNIT, THE ANGLE OF THE WATER STREAM SHALL BE 15 DEGREES MAXIMUM.

ADVISORY 602.6 WATER FLOW. THE PURPOSE OF REQUIRING THE DRINKING FOUNTAIN SPOUT TO PROVIDE A FLOW OF WATER 4 INCHES (100 MM) HIGH MINIMUM IS SO THAT A CUP CAN BE INSERTED UNDER THE FLOW OF WATER TO PROVIDE A DRINK OF WATER FOR AN INDIVIDUAL WHO, BECAUSE OF A DISABILITY, WOULD OTHERWISE BE INCAPABLE OF USING THE DRINKING FOUNTAIN.

602.7 DRINKING FOUNTAINS FOR STANDING PERSONS. SPOUT OUTLETS OF DRINKING FOUNTAINS FOR STANDING PERSONS SHALL BE 36 INCHES (965 MM) MINIMUM AND 43 INCHES (1090 MM) MAXIMUM ABOVE THE FINISH FLOOR OR GROUND.

603 TOILET AND BATHING ROOMS

603.1 TURNING SPACE. TURNING SPACE COMPLYING WITH 304 SHALL BE PROVIDED WITHIN THE ROOM.

603.2 OVERLAP. REQUIRED CLEAR FLOOR SPACES, CLEARANCE AT FIXTURES, AND TURNING SPACE SHALL BE PERMITTED TO OVERLAP.

603.3 DOOR SWING. DOORS SHALL NOT SWING INTO THE CLEAR FLOOR SPACE OR CLEARANCE REQUIRED FOR ANY FIXTURE. DOORS SHALL BE PERMITTED TO SWING INTO THE REQUIRED TURNING SPACE.

EXCEPTIONS:

- DOORS TO A TOILET ROOM OR BATHING ROOM FOR A SINGLE OCCUPANT ACCESSED ONLY THROUGH A PRIVATE OFFICE AND NOT FOR COMMON USE OR PUBLIC USE SHALL BE PERMITTED TO SWING INTO THE CLEAR FLOOR SPACE OR CLEARANCE PROVIDED THE SWING OF THE DOOR CAN BE REVERSED TO COMPLY WITH 603.3.
- WHERE THE TOILET ROOM OR BATHING ROOM IS FOR INDIVIDUAL USE AND A CLEAR FLOOR SPACE COMPLYING WITH 305.3 IS PROVIDED WITHIN THE ROOM BEYOND THE ARC OF THE DOOR SWING, DOORS SHALL BE PERMITTED TO SWING INTO THE CLEAR FLOOR SPACE OR CLEARANCE REQUIRED FOR ANY FIXTURE.

ADVISORY 603.2.3 DOOR SWING EXCEPTION 1. AT THE TIME THE DOOR IS INSTALLED, AND IF THE DOOR SWING IS REVERSED IN THE FUTURE, THE DOOR MUST MEET ALL THE REQUIREMENTS SPECIFIED IN 603.3.1. THE DOOR SWING CANNOT REDUCE THE REQUIRED WIDTH OF AN ACCESSIBLE ROUTE. ALSO, AVOID VIOLATING OTHER BUILDING OR LIFE SAFETY CODES WHEN THE DOOR SWING IS REVERSED.

603.3 MIRRORS. MIRRORS LOCATED ABOVE LAVATORIES OR COUNTERTOPS SHALL BE INSTALLED WITH THE BOTTOM EDGE OF THE REFLECTING SURFACE 40 INCHES (1015 MM) MAXIMUM ABOVE THE FINISH FLOOR OR GROUND. MIRRORS NOT LOCATED ABOVE LAVATORIES OR COUNTERTOPS SHALL BE INSTALLED WITH THE BOTTOM EDGE OF THE REFLECTING SURFACE 35 INCHES (890 MM) MAXIMUM ABOVE THE FINISH FLOOR OR GROUND.

ADVISORY 603.3 MIRRORS. A SINGLE FULL-LENGTH MIRROR CAN ACCOMMODATE A GREATER NUMBER OF PEOPLE, INCLUDING CHILDREN. IN ORDER FOR MIRRORS TO BE USABLE BY PEOPLE WHO ARE AMBULATORY AND PEOPLE WHO USE WHEELCHAIRS, THE TOP EDGE OF MIRRORS SHOULD BE 74 INCHES (1880 MM) MINIMUM FROM THE FLOOR OR GROUND.

603.4 COAT HOOKS AND SHELVES. COAT HOOKS SHALL BE LOCATED WITHIN ONE OF THE REACH RANGES SPECIFIED IN 308. SHELVES SHALL BE LOCATED 40 INCHES (1015 MM) MINIMUM AND 48 INCHES (1220 MM) MAXIMUM ABOVE THE FINISH FLOOR.

604 WATER CLOSETS AND TOILET COMPARTMENTS

604.1 LOCATION. THE WATER CLOSET SHALL BE POSITIONED WITH A WALL OR PARTITION TO THE REAR AND TO ONE SIDE. THE CENTERLINE OF THE WATER CLOSET SHALL BE 16 INCHES (405 MM) MINIMUM TO 18 INCHES (455 MM) MAXIMUM FROM THE SIDE WALL OR PARTITION, EXCEPT THAT THE WATER CLOSET SHALL BE 17 INCHES (430 MM) MINIMUM AND 19 INCHES (485 MM) MAXIMUM FROM THE SIDE WALL OR PARTITION IN THE AMBULATORY ACCESSIBLE TOILET COMPARTMENT SPECIFIED IN 604.2.2. WATER CLOSETS SHALL BE ADJACENT TO A LEFT-HAND OR RIGHT-HAND APPROACH.

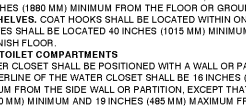


FIGURE 604.1 WATER CLOSET LOCATION

604.1.2 DOORS. TOILET COMPARTMENTS TO BE USED BY CHILDREN SHALL COMPLY WITH 404 EXCEPT THAT THE APPROACH TO THE LATCH SIDE OF THE COMPARTMENT DOOR, CLEARANCE BETWEEN THE DOOR AND ANY OBSTRUCTION SHALL BE 42 INCHES (1065 MM) MINIMUM. DOORS SHALL BE LOCATED TO THE FRONT OF THE PARTITION OR IN THE SIDE WALL OR PARTITION FARTHEST FROM THE WATER CLOSET. WHERE LOCATED IN THE FRONT PARTITION, THE DOOR OPENING SHALL BE 4 INCHES (100 MM) MINIMUM FROM THE FRONT PARTITION. THE DOOR SHALL BE SELF-CLOSING. A DOOR PULL COMPONENT WITH 404.2.2 SHALL BE PLACED ON BOTH SIDES OF THE DOOR NEAR THE LATCH. TOILET COMPARTMENT DOORS SHALL NOT SWING INTO THE MINIMUM REQUIRED COMPARTMENT AREA.

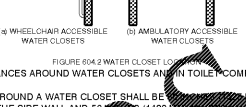


FIGURE 604.1.2 TOILET COMPARTMENT DOOR LOCATION

604.2 CLEARANCE. CLEARANCES AROUND WATER CLOSETS AND IN TOILET COMPARTMENTS SHALL COMPLY WITH 604.3.

604.2.1 SIZE. CLEARANCE AROUND A WATER CLOSET SHALL BE 30 INCHES (760 MM) MINIMUM MEASURED PERPENDICULAR FROM THE SIDE WALL AND 18 INCHES (455 MM) MINIMUM MEASURED PERPENDICULAR FROM THE REAR WALL.

604.2.2 OVERLAP. THE REQUIRED CLEARANCE AROUND WATER CLOSETS SHALL BE PERMITTED TO OVERLAP THE WATER CLOSET, ASSOCIATED WATER CLOSING DEVICES, AND CLEARANCES REQUIRED AT OTHER FIXTURES AND TOILET COMPARTMENTS. CLEARANCES AT FIXTURES OR OBSTRUCTIONS SHALL BE PERMITTED TO OVERLAP CLEARANCES AT OTHER FIXTURES OR OBSTRUCTIONS. CLEARANCES AT FIXTURES OR OBSTRUCTIONS SHALL BE PERMITTED TO OVERLAP CLEARANCES AT OTHER FIXTURES OR OBSTRUCTIONS. CLEARANCES AT FIXTURES OR OBSTRUCTIONS SHALL BE PERMITTED TO OVERLAP CLEARANCES AT OTHER FIXTURES OR OBSTRUCTIONS.

EXCEPTION: IN IDENTIFIED BELLWELLINGS, A LAVATORY OVERLAPPING WITH 606 SHALL BE PERMITTED TO OVERLAP CLEARANCES AT OTHER FIXTURES OR OBSTRUCTIONS.

ADVISORY 604.2.2 OVERLAP. WHERE THE DOOR TO THE TOILET ROOM IS PLACED DIRECTLY IN FRONT OF THE WATER CLOSET, THE WATER CLOSET CANNOT OVERLAP THE REQUIRED MANUEVERING CLEARANCE AT THE DOOR INSIDE THE ROOM.

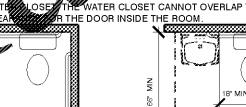


FIGURE 604.2 WATER CLOSET CLEARANCE

604.4 SEATS. THE SEAT HEIGHT OF A WATER CLOSET ABOVE THE FINISH FLOOR SHALL BE 17 INCHES (430 MM) MINIMUM AND 19 INCHES (485 MM) MAXIMUM MEASURED TO THE TOP OF THE SEAT. SEATS SHALL NOT BE PERMITTED TO RETURN TO A LIFTED POSITION.

EXCEPTIONS:

- A WATER CLOSET IN A TOILET ROOM FOR A SINGLE OCCUPANT ACCESSED ONLY THROUGH A PRIVATE OFFICE AND NOT FOR COMMON USE OR PUBLIC USE SHALL NOT BE REQUIRED TO COMPLY WITH 604.4.
- IN RESIDENTIAL DWELLING UNITS, THE HEIGHT OF WATER CLOSING DEVICES SHALL BE PERMITTED TO BE 15 INCHES (380 MM) MINIMUM AND 19 INCHES (485 MM) MAXIMUM ABOVE THE FINISH FLOOR MEASURED TO THE TOP OF THE SEAT.

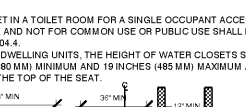


FIGURE 604.4 SEAT HEIGHT

604.5 GRAB BARS. GRAB BARS FOR WATER CLOSING DEVICES SHALL COMPLY WITH 609. GRAB BARS SHALL BE PROVIDED ON THE SIDE WALL CLOSEST TO THE WATER CLOSET AND ON THE REAR WALL.

EXCEPTIONS:

- GRAB BARS SHALL NOT BE REQUIRED TO BE INSTALLED IN A TOILET ROOM FOR A SINGLE OCCUPANT ACCESSED ONLY THROUGH A PRIVATE OFFICE AND NOT FOR COMMON USE OR PUBLIC USE PROVIDED THAT REINFORCEMENT HAS BEEN INSTALLED IN WALLS AND LOCATED SO AS TO PERMIT THE INSTALLATION OF GRAB BARS COMPLYING WITH 604.5.
- IN RESIDENTIAL DWELLING UNITS, GRAB BARS SHALL NOT BE REQUIRED TO BE INSTALLED IN TOILET OR BATHROOM PROVIDED THAT REINFORCEMENT HAS BEEN INSTALLED IN WALLS AND LOCATED SO AS TO PERMIT THE INSTALLATION OF GRAB BARS COMPLYING WITH 604.5.
- IN DETENTION OR CORRECTION FACILITIES, GRAB BARS SHALL NOT BE REQUIRED TO BE INSTALLED IN HOUSING OR HOLDING CELLS THAT ARE SPECIALLY DESIGNED WITHOUT PROTRUSIONS TO PREVENT SUICIDE PREVENTION.

ADVISORY 604.5 GRAB BARS EXCEPTION 2. REINFORCEMENT MUST BE SUFFICIENT TO PERMIT THE INSTALLATION OF REAR AND SIDE WALL GRAB BARS THAT FULLY MEET ALL ACCESSIBILITY REQUIREMENTS, BUT NOT LIMITED TO, REQUIRED LENGTH, INSTALLATION HEIGHT, AND STRUCTURAL STRENGTH.

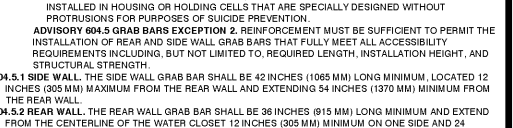


FIGURE 604.5 GRAB BAR LOCATION

604.5.1 SIDE WALL. THE SIDE WALL GRAB BAR SHALL BE 42 INCHES (1065 MM) LONG MINIMUM, LOCATED 12 INCHES (305 MM) MAXIMUM FROM THE REAR WALL AND EXTENDING 54 INCHES (1370 MM) MINIMUM FROM THE REAR WALL.

604.5.2 REAR WALL. THE REAR WALL GRAB BAR SHALL BE 36 INCHES (915 MM) LONG MINIMUM AND EXTEND FROM THE CENTERLINE OF THE WATER CLOSET 12 INCHES (305 MM) MINIMUM ON ONE SIDE AND 24 INCHES (610 MM) MINIMUM ON THE OTHER SIDE.

EXCEPTIONS:

- THE REAR GRAB BAR SHALL BE PERMITTED TO BE 24 INCHES (610 MM) LONG MINIMUM, CENTERED ON THE WATER CLOSET, WHERE WALL SPACE DOES NOT PERMIT A LENGTH OF 36 INCHES (915 MM) MINIMUM DUE TO THE LOCATION OF A RECESSED FIXTURE ADJACENT TO THE WATER CLOSET.
- WHERE AN ADMINISTRATIVE AUTHORITY REQUIRES FLUSH CONTROLS FOR FLUSH VALVES TO BE LOCATED IN A POSITION THAT CONFLICTS WITH THE LOCATION OF THE REAR GRAB BAR, THEN THE REAR GRAB BAR SHALL BE PERMITTED TO BE SPLIT OR SHIFTED TO THE OPEN SIDE OF THE TOILET AREA.

604.6 FLUSH CONTROLS. FLUSH CONTROLS SHALL BE HAND OPERATED OR AUTOMATIC, HAND OPERATED FLUSH CONTROLS SHALL COMPLY WITH 309. FLUSH CONTROLS SHALL BE LOCATED ON THE OPEN SIDE OF THE WATER CLOSET EXCEPT IN AMBULATORY ACCESSIBLE COMPARTMENTS COMPLYING WITH 604.2.2.

ADVISORY 604.6 FLUSH CONTROLS. IF PLUMBING VALVES ARE LOCATED DIRECTLY BEHIND THE TOILET SEAT, FLUSH VALVES AND RELATED PLUMBING CAN CAUSE INJURY OR IMBALANCE WHEN A PERSON LEANS BACK AGAINST THE TOILET SEAT TO PREVENT CAUSING INJURY OR IMBALANCE. THE LUBRICATION CAN BE LOCATED BEHIND WALLS OR TO THE SIDE OF THE TOILET, OR IF APPROVED BY THE LOCAL AUTHORITY HAVING JURISDICTION, PROVIDE A TOILET SEAT LID.

604.7 DISPENSERS. TOILET PAPER DISPENSERS SHALL COMPLY WITH 309.4 AND SHALL BE 7 INCHES (180 MM) MINIMUM AND 9 INCHES (230 MM) MAXIMUM FROM THE WATER CLOSET MEASURED TO THE CENTERLINE OF THE DISPENSER. THE OUTLET OF THE DISPENSER SHALL BE 15 INCHES (380 MM) MINIMUM AND 48 INCHES (1220 MM) MAXIMUM ABOVE THE FINISH FLOOR AND SHALL NOT BE LOCATED BEHIND GRAB BARS. DISPENSERS SHALL NOT BE OF A TYPE THAT CONTROLS DELIVERY OR THAT DOES NOT ALLOW CONTINUOUS PAPER FLOW.

ADVISORY 604.7 DISPENSERS. IF TOILET PAPER DISPENSERS ARE INSTALLED ABOVE THE SIDE WALL GRAB BAR, THE OUTLET OF THE TOILET PAPER DISPENSER MUST BE 48 INCHES (1220 MM) MAXIMUM ABOVE THE FINISH FLOOR AND THE TOP OF THE GRIPPING SURFACE OF THE GRAB BAR MUST BE 33 INCHES (840 MM) MINIMUM AND 38 INCHES (915 MM) MAXIMUM ABOVE THE FINISH FLOOR.

604.8 TOILET COMPARTMENTS. WHEELCHAIR ACCESSIBLE TOILET COMPARTMENTS SHALL MEET THE REQUIREMENTS OF 81 AND 804.3.2 COMPARTMENTS CONTAINING MORE THAN ONE PLUMBING FIXTURE SHALL COMPLY WITH 603. AMBULATORY ACCESSIBLE COMPARTMENTS SHALL COMPLY WITH 604.8.2 AND 604.8.3.

604.8.1 WHEELCHAIR ACCESSIBLE COMPARTMENTS. WHEELCHAIR ACCESSIBLE COMPARTMENTS SHALL COMPLY WITH 604.8.1.

604.8.1.1 SIZE. WHEELCHAIR ACCESSIBLE COMPARTMENTS SHALL BE 60 INCHES (1525 MM) WIDE MINIMUM MEASURED PERPENDICULAR TO THE SIDE WALL, AND 58 INCHES (1460 MM) DEEP MINIMUM FROM THE HUNG WATER CLOSING DEVICES TO THE REAR WALL. WHEELCHAIR ACCESSIBLE COMPARTMENTS FOR CHILDREN'S USE SHALL BE 60 INCHES (1525 MM) WIDE MINIMUM MEASURED PERPENDICULAR TO THE SIDE WALL, AND 58 INCHES (1460 MM) DEEP MINIMUM FOR WALL MOUNTED WATER CLOSING DEVICES MEASURED PERPENDICULAR TO THE REAR WALL.

ADVISORY 604.8.1.1 SIZE. THE MINIMUM SPACE REQUIRED IN TOILET COMPARTMENTS IS PROVIDED SO THAT A PERSON USING A WHEELCHAIR CAN MANUEVER INTO POSITION AT THE WATER CLOSET. THIS SPACE CANNOT BE OBSTRUCTED BY BABY CHANGING TABLES OR OTHER FIXTURES OR CONVENIENCES, EXCEPT AS SPECIFIED AT 604.3.2 (OVERLAP). IF TOILET COMPARTMENTS ARE TO BE USED TO HOUSE FIXTURES OTHER THAN THOSE ASSOCIATED WITH THE WATER CLOSET, THEY MUST BE DESIGNED TO EXCEED THE MINIMUM SPACE REQUIREMENTS. CONVENIENCE FIXTURES SUCH AS BABY CHANGING TABLES MUST ALSO BE ACCESSIBLE TO PEOPLE WITH DISABILITIES AS WELL AS TO OTHER USERS. TOILET COMPARTMENTS THAT ARE DESIGNED TO MEET AND NOT EXCEED THE MINIMUM SPACE REQUIREMENTS MAY NOT PROVIDE ADEQUATE SPACE FOR MANUEVERING INTO POSITION AT A BABY CHANGING TABLE.

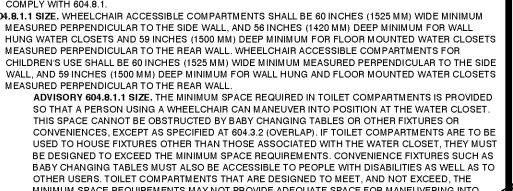


FIGURE 604.8 TOILET COMPARTMENT CLEARANCES

604.8.2 DOORS. TOILET COMPARTMENTS TO BE USED BY CHILDREN SHALL COMPLY WITH 404 EXCEPT THAT THE APPROACH TO THE LATCH SIDE OF THE COMPARTMENT DOOR, CLEARANCE BETWEEN THE DOOR AND ANY OBSTRUCTION SHALL BE 42 INCHES (1065 MM) MINIMUM. DOORS SHALL BE LOCATED TO THE FRONT OF THE PARTITION OR IN THE SIDE WALL OR PARTITION FARTHEST FROM THE WATER CLOSET. WHERE LOCATED IN THE FRONT PARTITION, THE DOOR OPENING SHALL BE 4 INCHES (100 MM) MINIMUM FROM THE FRONT PARTITION. THE DOOR SHALL BE SELF-CLOSING. A DOOR PULL COMPONENT WITH 404.2.2 SHALL BE PLACED ON BOTH SIDES OF THE DOOR NEAR THE LATCH. TOILET COMPARTMENT DOORS SHALL NOT SWING INTO THE MINIMUM REQUIRED COMPARTMENT AREA.

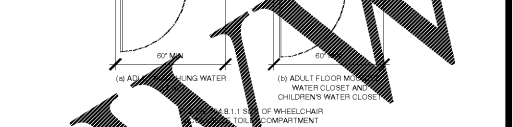


FIGURE 604.8.2 TOILET COMPARTMENT DOOR LOCATION

604.8.3 APPROACH. COMPARTMENTS SHALL BE ARRANGED FOR LEFT-HAND OR RIGHT-HAND APPROACH TO THE WATER CLOSET.

604.8.4 TOE CLEARANCE. THE FRONT PARTITION AND AT LEAST ONE SIDE PARTITION SHALL PROVIDE A TOE CLEARANCE OF 9 INCHES (230 MM) MINIMUM ABOVE THE FINISH FLOOR AND 6 INCHES (150 MM) DEEP MINIMUM BEYOND THE COMPARTMENT-SIDE FACE OF THE PARTITION, EXCLUSIVE OF PARTITION SUPPORT MEMBERS. COMPARTMENTS FOR CHILDREN'S USE SHALL PROVIDE A TOE CLEARANCE OF 12 INCHES (305 MM) MINIMUM ABOVE THE FINISH FLOOR.

EXCEPTION: TOE CLEARANCE AT THE FRONT PARTITION IS NOT REQUIRED IN A COMPARTMENT GREATER THAN 60 INCHES (1525 MM) DEEP WITH A WALL HUNG WATER CLOSET OR 65 INCHES (1650 MM) DEEP WITH A FLOOR MOUNTED WATER CLOSET. TOE CLEARANCE AT THE SIDE PARTITION IS NOT REQUIRED IN A COMPARTMENT GREATER THAN 68 INCHES (1725 MM) WIDE. TOE CLEARANCE AT THE REAR PARTITION IS NOT REQUIRED IN A COMPARTMENT FOR CHILDREN'S USE THAT IS GREATER THAN 65 INCHES (1650 MM) DEEP.

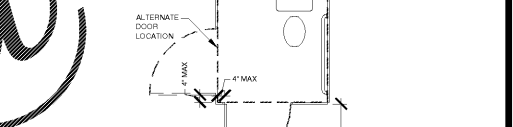


FIGURE 604.8.3 APPROACH TO TOILET COMPARTMENT

604.8.1.5 GRAB BARS. GRAB BARS SHALL COMPLY WITH 609. A SIDE-WALL GRAB BAR COMPLYING WITH 604.5.1 SHALL BE PROVIDED AND SHALL BE LOCATED ON THE WALL CLOSEST TO THE WATER CLOSET. IN ADDITION, A REAR-WALL GRAB BAR COMPLYING WITH 604.5.2 SHALL BE PROVIDED.

604.8.2 AMBULATORY ACCESSIBLE COMPARTMENTS. AMBULATORY ACCESSIBLE COMPARTMENTS SHALL COMPLY WITH 604.8.2.

604.8.2.1 SIZE. AMBULATORY ACCESSIBLE COMPARTMENTS SHALL HAVE A DEPTH OF 60 INCHES (1525 MM) MINIMUM AND A WIDTH OF 36 INCHES (915 MM) MINIMUM AND 37 INCHES (940 MM) MAXIMUM.

604.8.2.2 DOORS. TOILET COMPARTMENT DOORS, INCLUDING DOOR HARDWARE, SHALL COMPLY WITH 404, EXCEPT THAT IF THE APPROACH IS TO THE LATCH SIDE OF THE COMPARTMENT DOOR, CLEARANCE BETWEEN THE DOOR AND ANY OBSTRUCTION SHALL BE 42 INCHES (1065 MM) MINIMUM. THE DOOR SHALL BE SELF-CLOSING. A DOOR PULL COMPONENT WITH 404.2.2 SHALL BE PLACED ON BOTH SIDES OF THE DOOR NEAR THE LATCH. TOILET COMPARTMENT DOORS SHALL NOT SWING INTO THE MINIMUM REQUIRED COMPARTMENT AREA.

604.8.2.3 GRAB BARS. GRAB BARS SHALL COMPLY WITH 609. A SIDE-WALL GRAB BAR COMPLYING WITH 604.5.1 SHALL BE PROVIDED ON BOTH SIDES OF THE COMPARTMENT.

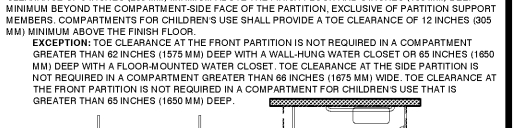


FIGURE 604.8.1.5 GRAB BAR LOCATION

604.8.2 COAT HOOKS AND SHELVES. COAT HOOKS SHALL BE LOCATED WITHIN ONE OF THE REACH RANGES SPECIFIED IN 308. SHELVES SHALL BE LOCATED 40 INCHES (1015 MM) MINIMUM AND 48 INCHES (1220 MM) MAXIMUM ABOVE THE FINISH FLOOR.

605 GENERAL. URINALS SHALL COMPLY WITH 605.

605.1 URINALS. URINALS SHALL PROVIDE GREATER ACCESSIBILITY FOR A BROTHER RANGE OF PERSONS, INCLUDING PEOPLE OF SHORT STATURE.

605.2 HEIGHT AND DEPTH. URINALS SHALL BE THE STALL-TYPE OR THE WALL-HUNG TYPE WITH THE RIM 17 INCH (430 MM) MINIMUM ABOVE THE FINISH FLOOR OR GROUND. THE DEPTH SHALL BE 13 1/2 INCHES (343 MM) DEEP MINIMUM MEASURED FROM THE OUTER FACE OF THE URINAL RIM TO THE BACK OF THE FIXTURE.

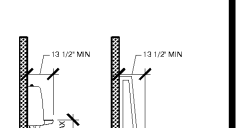


FIGURE 605.2 URINAL HEIGHT AND DEPTH

605.3 CLEAR FLOOR SPACE. A CLEAR FLOOR OR GROUND SPACE COMPLYING WITH 305 POSITIONED FOR FORWARD APPROACH SHALL BE PROVIDED.

605.4 FLUSH CONTROLS. FLUSH CONTROLS SHALL BE HAND OPERATED OR AUTOMATIC. HAND OPERATED FLUSH CONTROLS SHALL COMPLY WITH 309.

606 LAVATORIES AND SINKS

ADVISORY 606.1 GENERAL. IF SOAP AND TOWEL DISPENSERS ARE PROVIDED, THEY MUST BE INSTALLED WITHIN THE REACH RANGES SPECIFIED IN 308. TOWEL DISPENSERS AND TOWEL HOLDERS SO THAT THEY ARE CONVENIENTLY USABLE BY A PERSON AT THE ACCESSIBLE LAVATORY.

606.2 CLEAR FLOOR SPACE. A CLEAR FLOOR SPACE COMPLYING WITH 305, POSITIONED FOR A FORWARD APPROACH AND KNEE AND TOE CLEARANCE COMPLYING WITH 306 SHALL BE PROVIDED.</