

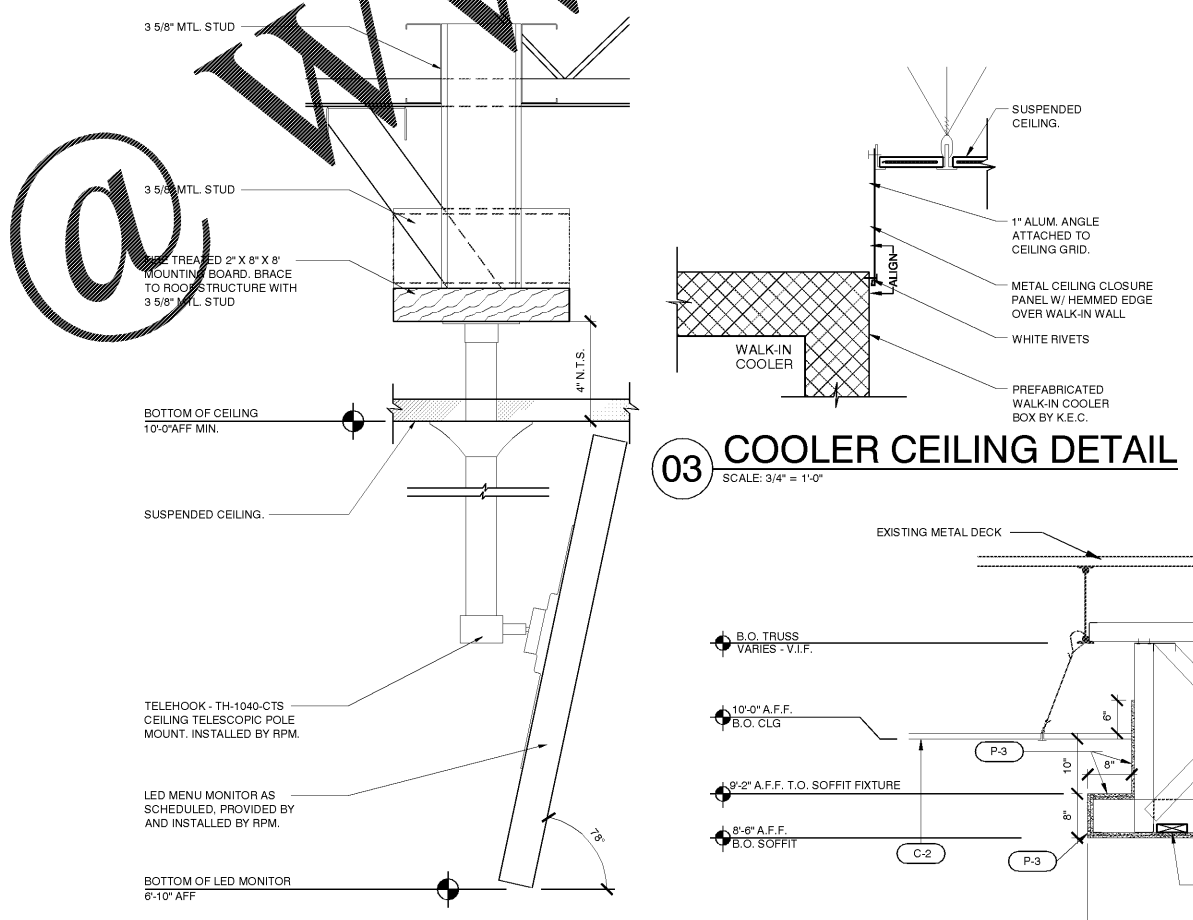
LIGHT SCHEDULE

ID	DESCRIPTION	MFR.	MODEL NO.	# OF LAMPS	VOLTAGE	REMARKS
F1	RECESSED 2'X2' LED GRID TROFFER FINISHED IN WHITE (KITCHEN, BOH. & OFFICE)	TRIANGLE SIGN	TSL-GTR2-22EH-50-80-UNV2-M-N-F	2	120 / 277	RECESSED GRID TROFFER OR WITH FLANGE KIT FOR GYPSUM BOARD TROFFER APPLICATION. SUPPLIED BY RPM. INSTALLED BY G.C.
F1A	RECESSED 2'X2' LED GRID TROFFER FINISHED IN WHITE (KITCHEN, BOH. & OFFICE)	TRIANGLE SIGN	TSL-GTR2-22EH-50-80-UNV2-S-N-F	2	120 / 277	RECESSED GRID TROFFER OR WITH FLANGE KIT FOR GYPSUM BOARD TROFFER APPLICATION. SUPPLIED BY RPM. INSTALLED BY G.C.
F2	RECESSED 6" LED DOWNLIGHT KIT WITH BRONZE TRIM	TRIANGLE SIGN	TSL-G-L7-DL6DWP-18W-3K- BZ	1	120 / 277	SUPPLIED BY RPM AND INSTALLED BY G.C.
F3	RECESSED 6" LED DOWNLIGHT KIT WITH SILVER TRIM	TRIANGLE SIGN	TSL-G-L7-DL6DWP-18W-4K-SILVER	1	120 / 277	SUPPLIED BY RPM AND INSTALLED BY G.C.
F4	QUBEPAK REGAL SERIES	TRIANGLE SIGN	TSL-WPR1-20-50-BZ		120 / 277	SUPPLIED BY RPM AND INSTALLED BY G.C.
F5	RECESSED 6" LED DOWNLIGHT KIT WITH WHITE TRIM	TRIANGLE SIGN	TSL-G-L7-DL6DWP-18W-4K-WH		120	SUPPLIED BY RPM AND INSTALLED BY G.C.
F6	1x1 SOFFIT LUMINAIRE	TRIANGLE SIGN	TSL-GTR2-11EH-50-80-UNV2-S		120/277	SUPPLIED BY RPM AND INSTALLED BY G.C.
F7	RED EXIT CEILING MOUNTED	LITHONIA	LER1BSD		120 / 277	SUPPLIED BY RPM AND INSTALLED BY G.C.
F8	RED EXIT / EMERGENCY LIGHT FIXTURE COMBO, WALL MOUNTED.	LITHONIA	TSL-LCLER1W	2	120 / 277	SUPPLIED BY RPM AND INSTALLED BY G.C.
F9	WALL MOUNTED EMERGENCY , 2-LAMP, LED FLOOD LIGHT WITH BATTERY BACK-UP	LITHONIA	TSL-LR-1	2	120 / 277	SUPPLIED BY RPM AND INSTALLED BY G.C.
F10	SOFFIT MOUNTED EXTERIOR EMERGENCY LIGHT	SURE LITE	SRP2SD-WH	1	120	SUPPLIED BY RPM AND INSTALLED BY G.C.
F11	BUILDING WALL PACK	TRIANGLE SIGN	TSL-LHSWP-1-C-4-T3-F-BZ		MULTI VOLT	

- ### GENERAL RCP NOTES
- PAINT DUCT WORK SILVER
 - PAINT METAL BRACKETS SILVER
 - LEAVE ALL EXPOSED CONDUIT AND J-BOXES SILVER
- ### RCP KEYNOTES
- 1 NEW MENU BOARDS. GC PROVIDED AND INSTALLED. GC TO REF DOMINO'S CONSTRUCTION MANUAL FOR MORE MENU BOARD AND MOUNTING HARDWARE SPECIFICATIONS.
 - 2 AREA OF EXHAUST HOOD. REFER TO MECHANICAL DRAWINGS.
 - 3 WALK-IN-COOLER. NO CEILING OVER COOLER. WALK-IN-COOLER RATING R30, FLAME SPREAD RATING 25. LABEL REQUIRED.
 - 4 PROVIDE R-19 ABOVE CEILING GRID, NON FACED.
 - 5 OPENING FOR EXHAUST DUCT. REF MECH DWGS.
 - 6 COOLER LIGHTS SUPPLIED BY RPM. INSTALLED BY G.C.
 - 7 G.C. TO PROVIDE 2X BLOCKING ABOVE CEILING FOR MONITOR SUPPORT.
 - 8 EXISTING LED LIGHTING AND HVAC DUCTS/EXHAUST FANS REMAIN.
 - 9 NEW PIZZA TRACKER. REFER TO 02/2018 FOR MOUNTING INFORMATION.

FINISH SCHEDULE

C#	DESCRIPTION	PRODUCT	SUPPLIED BY	INSTALLED BY
DROP CEILING				
C-1	SCRUBBABLE CEILING TILE - 2' X 2'	USG CEILINGS #3260, 2x2', WHITE, SQUARE EDGE, WITH GALVANIZED SUSPENSION AND ALUM GRID CAP	G.C.	G.C.
C-2	ACOUSTICAL CEILING TILE - 2' X 2'	USG CEILINGS: FROST CLIMAPLUS #414, 2' x 2' x 5/8" COLOR: SIENNA 565 EDGE: SLB GRID: DX/DXL 15/16" COLOR TO MATCH TILES	G.C.	G.C.
C-3	GYPSUM BOARD CEILING	GYPSUM BOARD CEILING	G.C.	G.C.
PAINT				
P-3	RED PAINT	SHERWIN-WILLIAMS #SW6868 - REAL REF EGG SHELL	G.C.	G.C.
P-6	WHITE PAINT	SHERWIN-WILLIAMS #SW7006 - EXTRA WHITE WASHABLE	G.C.	G.C.
P-7	BLACK PAINT	SHERWIN-WILLIAMS #SW6258 - TRICORN BLACK EGG SHELL	G.C.	G.C.

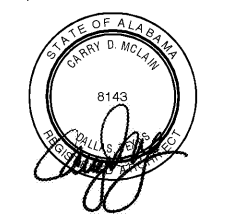


01 REFLECTED CEILING PLAN
SCALE: 1/4" = 1'-0"

02 MONITOR SUPPORT
SCALE: 3/4" = 1'-0"

04 SOFFIT SECTION DETAIL
SCALE: 3/4" = 1'-0"

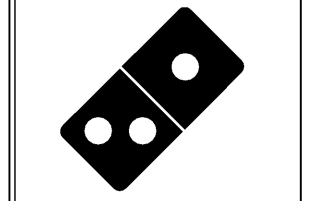
CARRY D. McLAIN
ARCHITECT
2851 IRVING BLVD.
DALLAS, TEXAS 75207
TEL: 972-861-0296



09-24-18

CLIENT PROJECT # 5879
ARCHITECTURAL PROJECT NO.: 385-071
DRAWN BY: RC
CHECKED BY: CT/RO

DOMINO'S PIZZA
30 FRANK LLOYD WRIGHT DRIVE
ANN ARBOR, MI 48105
TEL: 314.910.8560



Domino's

DOMINO'S PIZZA
#5879
3871 AIRPORT BLVD.
MOBILE, AL 36608

NO.	REVISIONS	DATE

PLANNING REVIEW ISSUE DATE: N/A
CLIENT REVIEW ISSUE DATE: 08/13/2018
LANDLORD REVIEW ISSUE DATE: 08/13/2018
BID ISSUE DATE: 09/24/2018
HEALTH DEPT. REVIEW ISSUE DATE: 09/24/2018
BUILDING REVIEW ISSUE DATE: 09/24/2018
CONSTRUCTION ISSUE DATE: 09/24/2018

DRAWING TITLE:
REFLECTED CEILING PLAN

DRAWING NUMBER:

A2.3