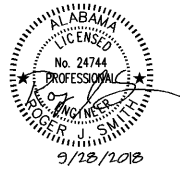


SHEET NOTES

- 1 INSTALL AIR HANDLING UNIT GENERALLY WHERE SHOWN. PROVIDE WITH AUXILIARY DRAIN PAN. BLOCK UNIT UP FROM UNDER DRAIN PAN WITH TREATED 6x6 TIMBERS. SEE DETAIL FOR ADDITIONAL REQUIREMENTS.
- 2 ROUTE DUCT THROUGH ATTIC STORAGE WALL INTO ADJACENT CEILING SPACE. TURN DUCT DOWN TO AN ELEVATION BELOW THE ATTIC STORAGE FLOOR FOR DISTRIBUTION. SEE HVAC PLAN FOR CONTINUATION. SEAL AROUND DUCT PENETRATION AT WALL AIR TIGHT.
- 3 ROUTE REFRIGERANT PIPING DOWN INSIDE EXTERIOR WALL. SEE HVAC PLAN FOR CONTINUATION TO ASSOCIATED HEAT PUMP.
- 4 EXTEND 3/4" INSULATED, SCHEDULE 40 PVC CONDENSATE DRAIN PIPING TO BUILDING EXTERIOR FOR DISPOSAL IN DRYWELL.
- 5 7" Ø SA UP FROM CEILING SPACE BELOW FOR CONNECTION TO SIDEWALL SUPPLY GRILLE AT ATTIC SPACE. BALANCE TO INDICATED VALUE. TRANSITION DUCT TO FULL SIZE OF GRILLE CONNECTION. PROVIDE GRILLE WITH INSULATED BOX.
- 6 10x10 OUTSIDE AIR DUCT. EXTEND FROM 12x12 OUTSIDE AIR INTAKE LOUVER AS INDICATED FOR CONNECTION TO RETURN AIR DUCT. PROVIDE MANUAL VOLUME DAMPER AND MOTORIZED DAMPER IN BRANCH CONNECTION TO RETURN DUCT. SEE DETAIL FOR ADDITIONAL INFORMATION. AS AIR HANDLING UNIT IS ENERGIZED, MOTORIZED OUTSIDE AIR DAMPER SHALL MODULATE OPEN, ELSE IT SHALL BE CLOSED.



Mulherin Custodial Home
 2496 Halls Mill Road
 Mobile, AL 36606

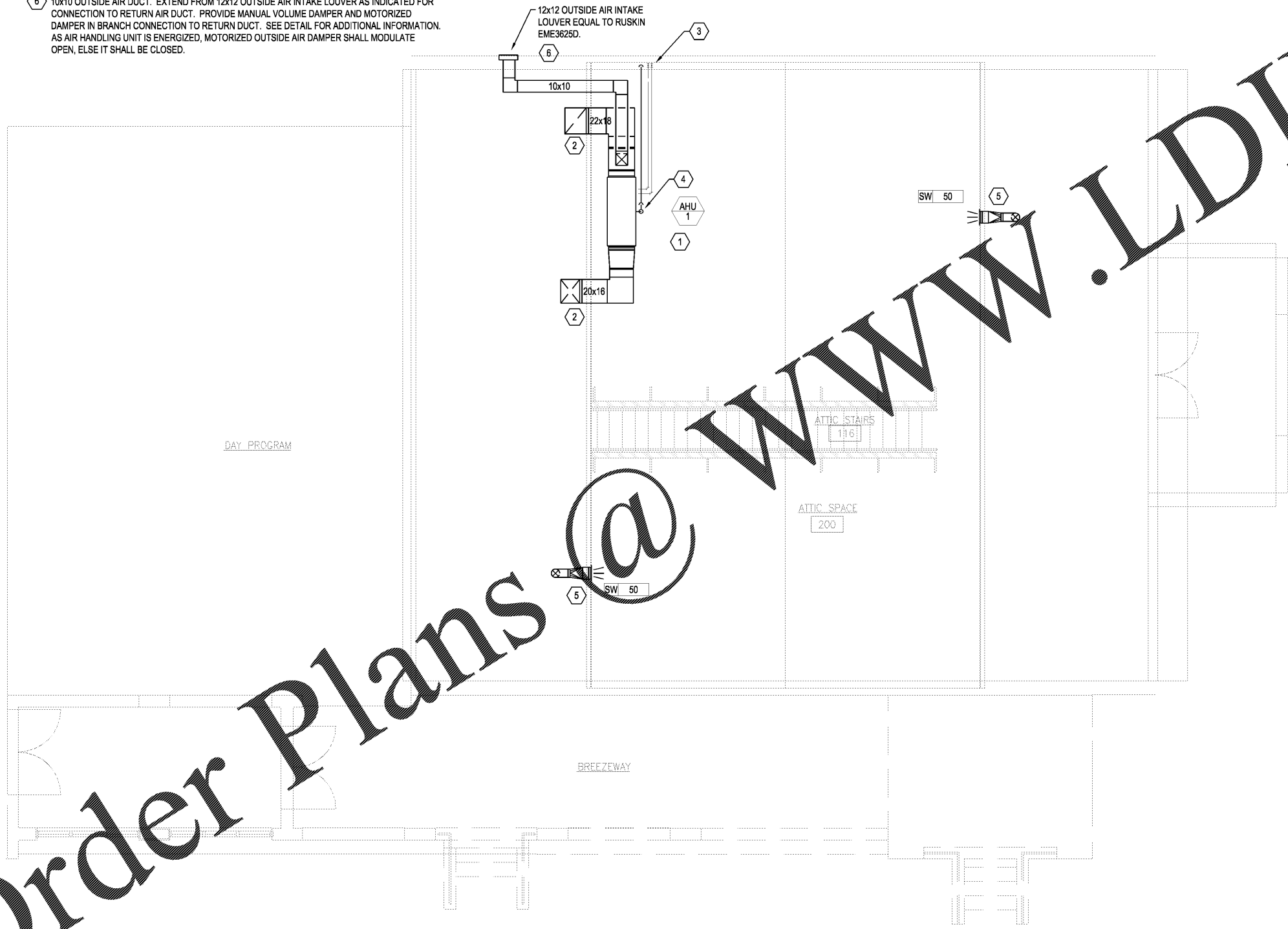
THIS DRAWING AND ITS REPRODUCTIONS ARE THE PROPERTY OF THE ARCHITECT AND MAY NOT BE REPRODUCED, PUBLISHED, OR USED IN ANY MANNER WITHOUT THE PERMISSION OF THE ARCHITECT.

REVISIONS	
MARK	DATE

SHEET NAME
ATTIC HVAC PLAN

PROJECT NO. 2018-16
 DATE SEPTEMBER 28, 2018
 SHEET NO.

M2.1



1 ATTIC HVAC PLAN
 SCALE: 1/4" = 1'-0"

Order Plans @ www.LDILine.com