

SHEET NOTES

- 1 20x16 SUPPLY AIR DUCT DOWN FROM ATTIC LEVEL ABOVE. REFERENCE ATTIC HVAC PLAN FOR CONTINUATION.
- 2 22x18 RETURN AIR DUCT DOWN FROM ATTIC LEVEL ABOVE. REFERENCE ATTIC HVAC PLAN FOR CONTINUATION.
- 3 7"Ø SUPPLY AIR BRANCH CONNECTION TO SERVE SIDEWALL REGISTER AT ATTIC LEVEL ABOVE. REFERENCE ATTIC HVAC PLAN FOR CONTINUATION.
- 4 ROUTE REFRIGERANT PIPING UP INSIDE EXTERIOR WALL TO ATTIC LEVEL FOR CONNECTION TO AIR HANDLING UNIT.
- 5 3/4" INSULATED, SCHEDULE 40 PVC CONDENSATE DRAIN DOWN FROM AIR HANDLING UNIT IN ATTIC. CONTINUE PIPING DOWN TO BELOW GRADE FOR DISCHARGE INTO CONDENSATE DRYWELL.
- 6 COORDINATE INSTALLATION OF DRYWELL WITH OTHER TRADES. ADJUST FINAL LOCATION OF DRYWELL AS NECESSARY TO AVOID CONFLICTS WITH EXISTING UTILITIES BELOW GRADE. CONTRACTOR SHALL FIELD VERIFY EXACT LOCATION OF EXISTING UTILITIES PRIOR TO BEGINNING ANY WORK.
- 7 OFFSET DUCT IN THIS AREA AS NECESSARY TO AVOID CONFLICTS WITH STAIRS.



Mulherin Custodial Home
 2496 Halls Mill Road
 Mobile, AL 36606

THIS DRAWING AND ITS REPRODUCTIONS ARE THE PROPERTY OF THE ARCHITECT AND MAY NOT BE REPRODUCED, PUBLISHED, OR USED IN ANY MANNER WITHOUT THE PERMISSION OF THE ARCHITECT.

REVISIONS	
MARK	DATE

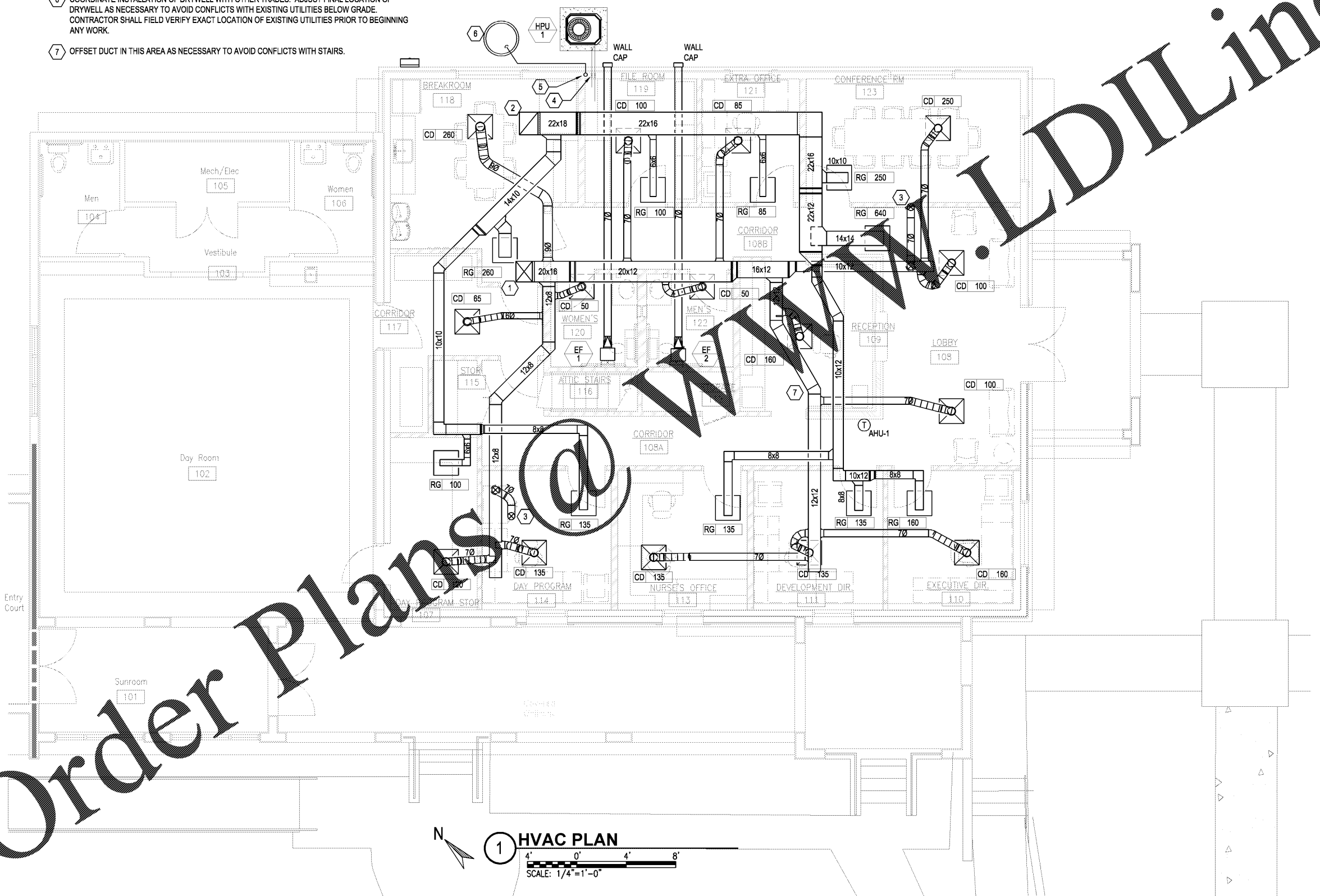
SHEET NAME
HVAC PLAN

PROJECT NO. 2018-16

DATE
 SEPTEMBER 28, 2018

SHEET NO.

M2.0



1 HVAC PLAN
 SCALE: 1/4"=1'-0"

Order Plans @ www.LDILine.com