



CUMMINGS ARCHITECTURE CORP

1000 House Street
Mobile, Alabama 36606
TEL: 251.433.9600

PRELIMINARY
NOT FOR CONSTRUCTION
PRELIMINARY

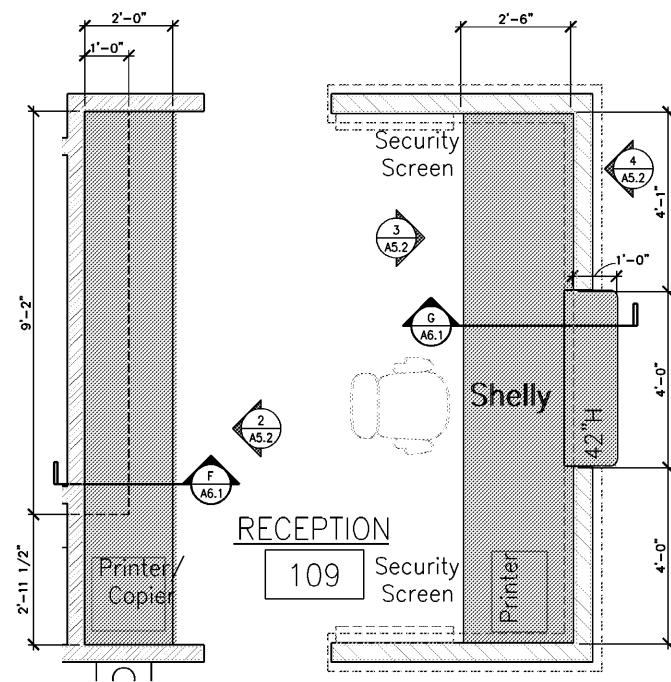
Mulherin Custodial Home
2496 Halls Mill Road
Mobile, AL 36606

THIS DRAWING AND ITS REPRODUCTIONS ARE THE PROPERTY OF THE ARCHITECT AND MAY NOT BE REPRODUCED, PUBLISHED, OR USED IN ANY MANNER WITHOUT THE PERMISSION OF THE ARCHITECT.

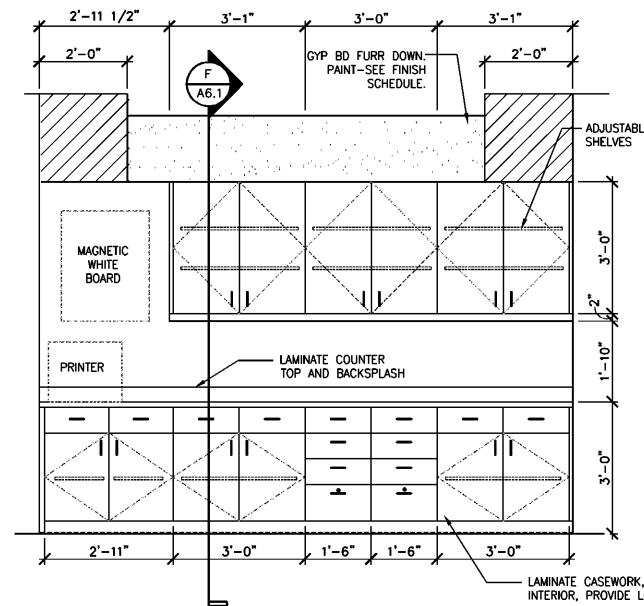
REVISIONS	
MARK	DATE

SHEET NAME
Interior Elevations
PROJECT NO. 2018-16
DATE OCTOBER 3, 2018
SHEET NO.

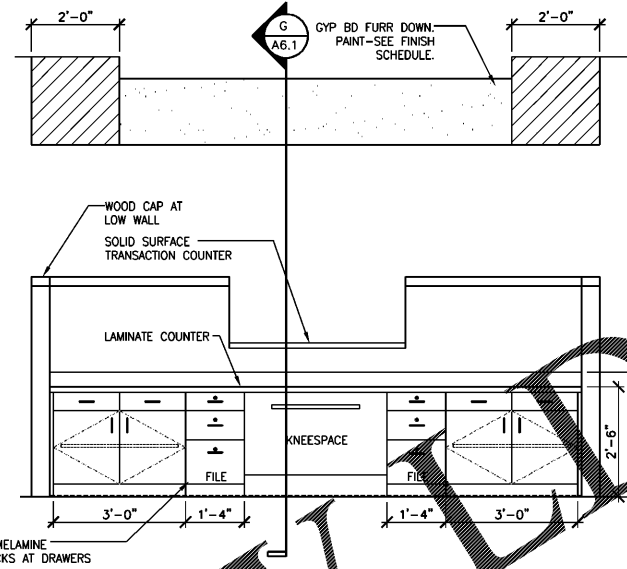
A5.2



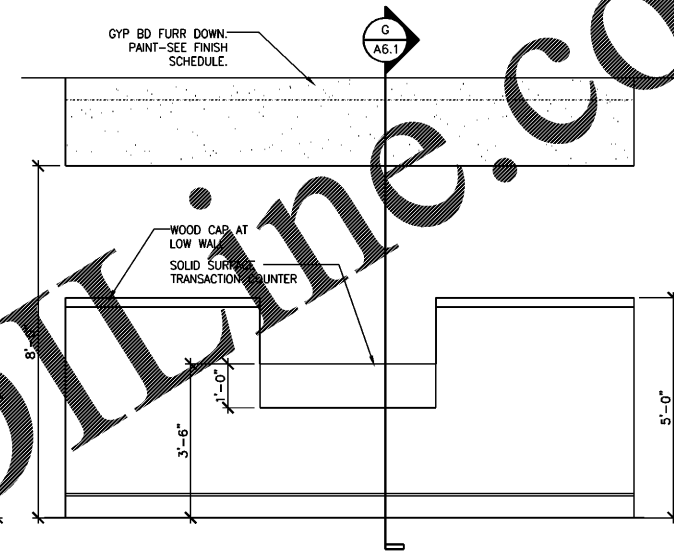
1 ENLARGED PLAN
SCALE: 1/2" = 1'-0"



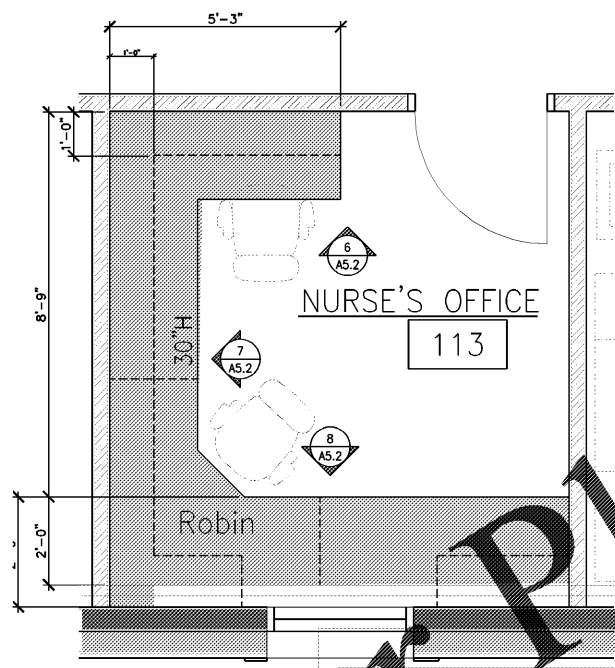
2 INTERIOR ELEVATION
SCALE: 1/2" = 1'-0"



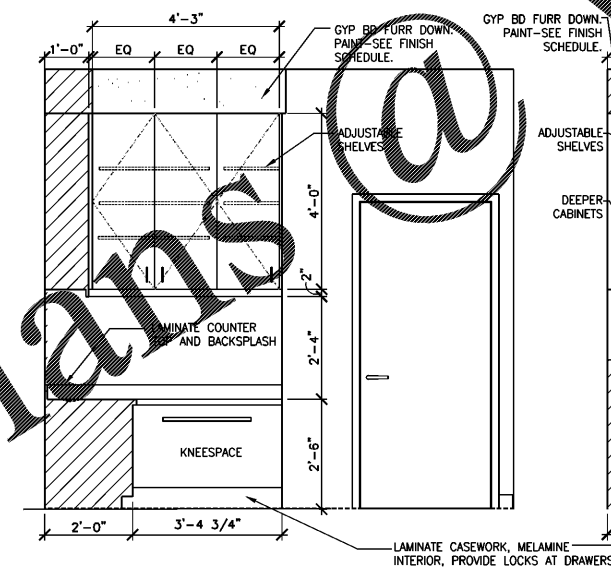
3 INTERIOR ELEVATION
SCALE: 1/2" = 1'-0"



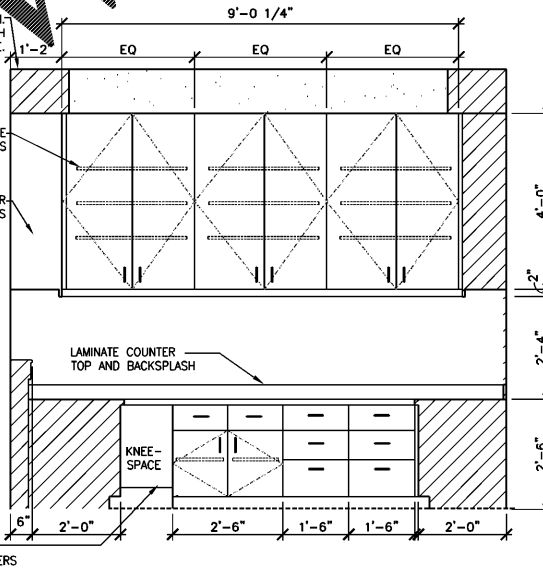
4 INTERIOR ELEVATION
SCALE: 1/2" = 1'-0"



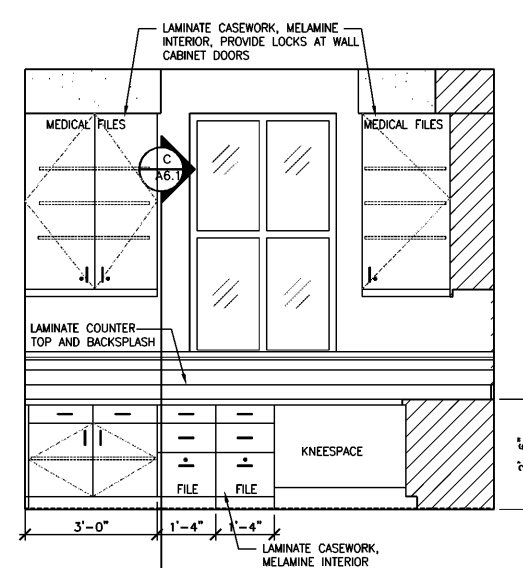
5 ENLARGED PLAN
SCALE: 1/2" = 1'-0"



6 INTERIOR ELEVATION
SCALE: 1/2" = 1'-0"



7 INTERIOR ELEVATION
SCALE: 1/2" = 1'-0"



8 INTERIOR ELEVATION
SCALE: 1/2" = 1'-0"

Order Plans @