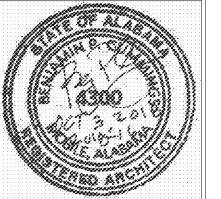




CUMMINGS ARCHITECTURE CORP.

1000 Housley Street  
Mobile, Alabama 36606  
TEL: 251.433.9600



Mulherin Custodial Home  
2496 Halls Mill Road  
Mobile, AL 36606

THIS DRAWING AND ITS REPRODUCTIONS ARE THE PROPERTY OF THE ARCHITECT AND MAY NOT BE REPRODUCED, PUBLISHED, OR USED IN ANY MANNER WITHOUT THE PERMISSION OF THE ARCHITECT.

REVISIONS

MARK	DATE

SHEET NAME

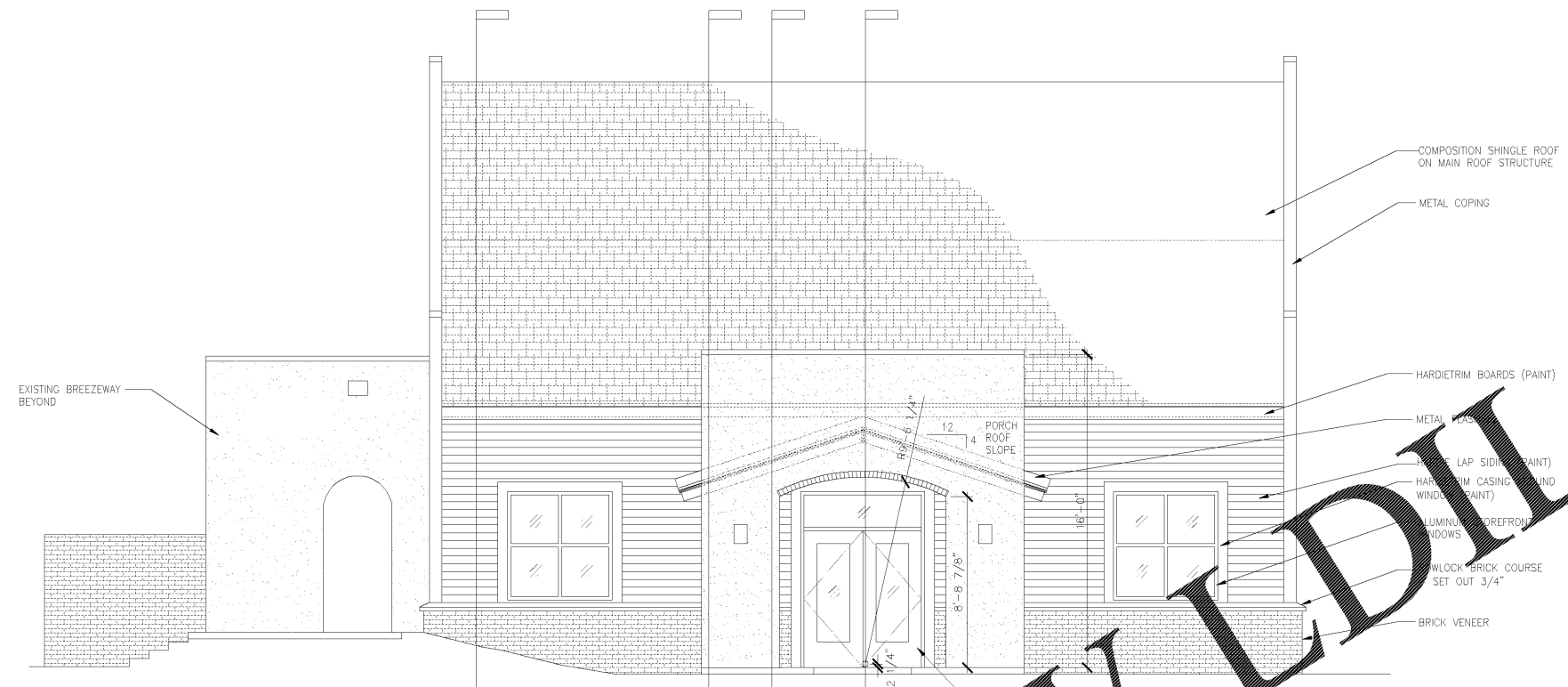
Exterior Elevations

PROJECT NO. 2018-16

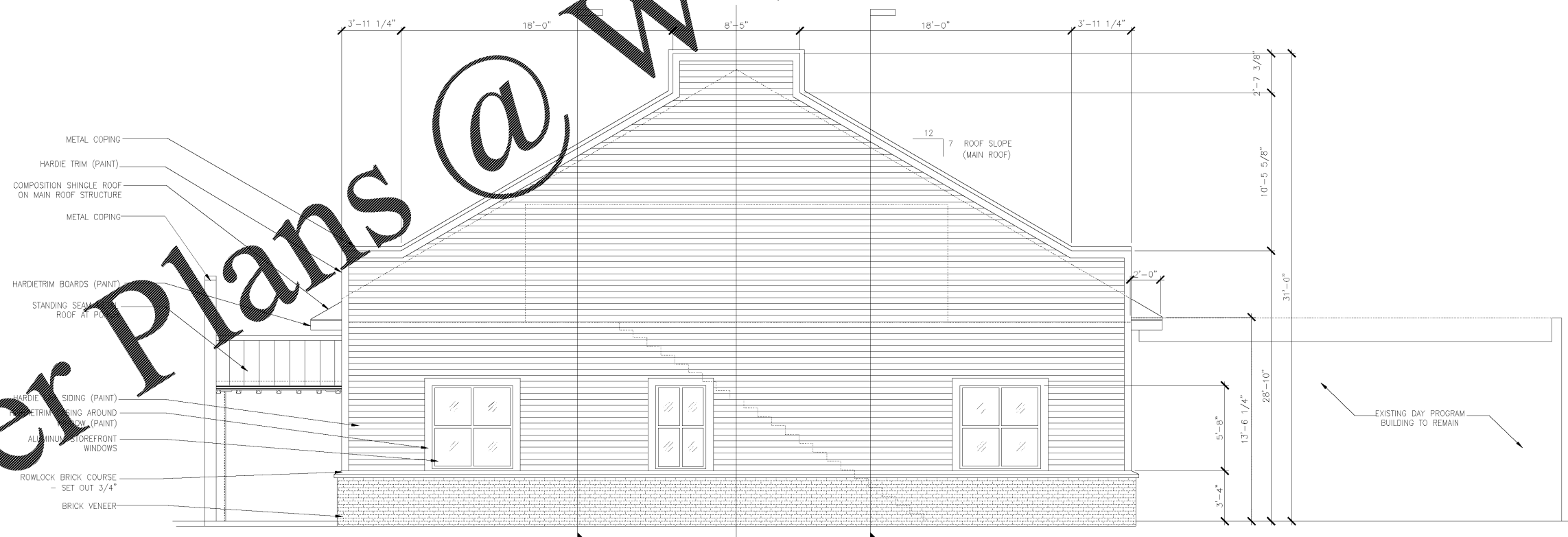
DATE OCTOBER 3, 2018

SHEET NO.

A2.1



A FRONT ELEVATION  
SCALE: 1/4" = 1'-0"



B RIGHT SIDE ELEVATION  
SCALE: 1/4" = 1'-0"

Order Plans @ [www.IDLine.com](http://www.IDLine.com)