

Mulherin Custodial Home
2496 Halls Mill Road
Mobile, AL 36606

THIS DRAWING AND ITS REPRODUCTIONS ARE THE PROPERTY OF THE ARCHITECT AND MAY NOT BE REPRODUCED, PUBLISHED, OR USED IN ANY MANNER WITHOUT THE PERMISSION OF THE ARCHITECT.

REVISIONS

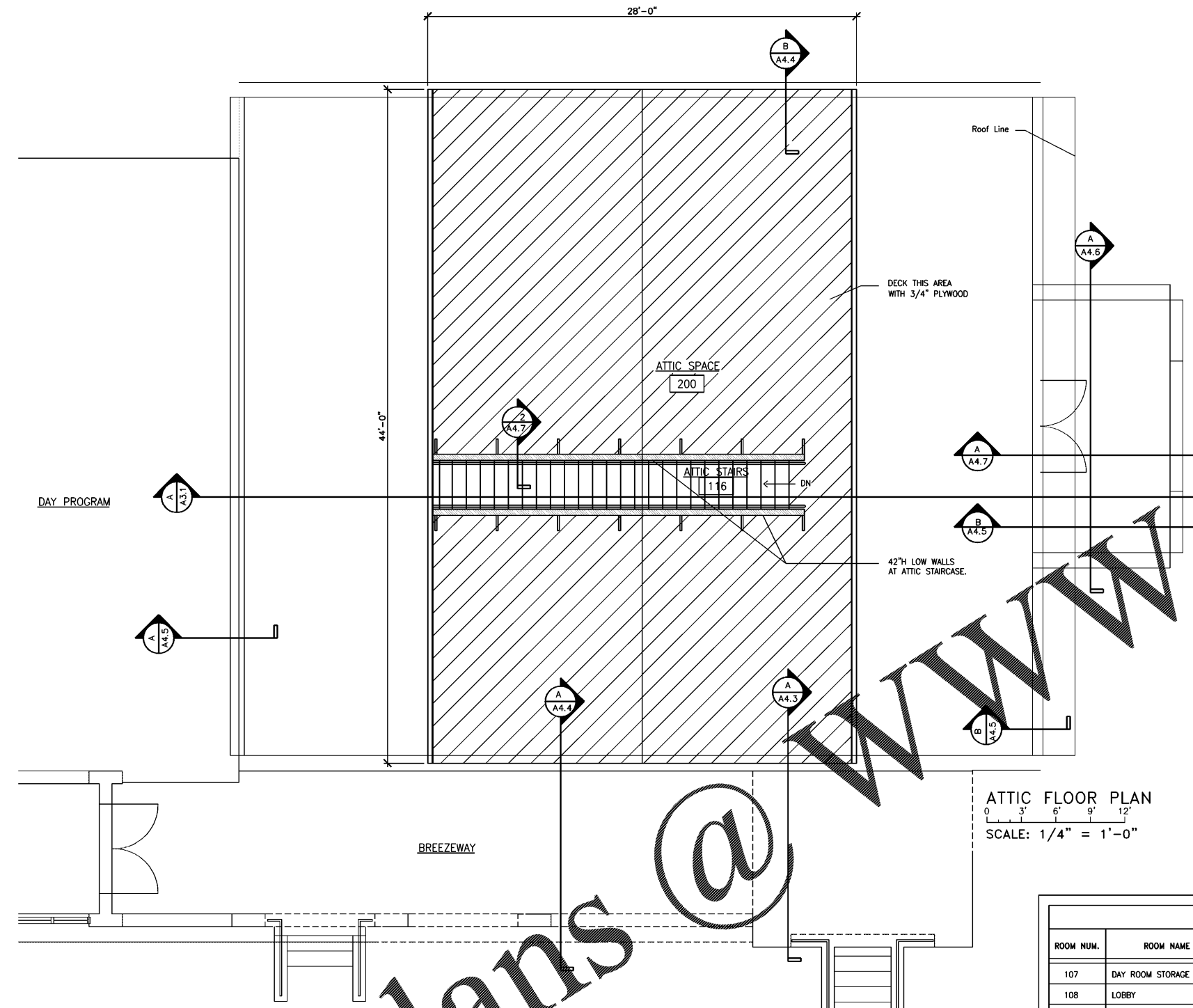
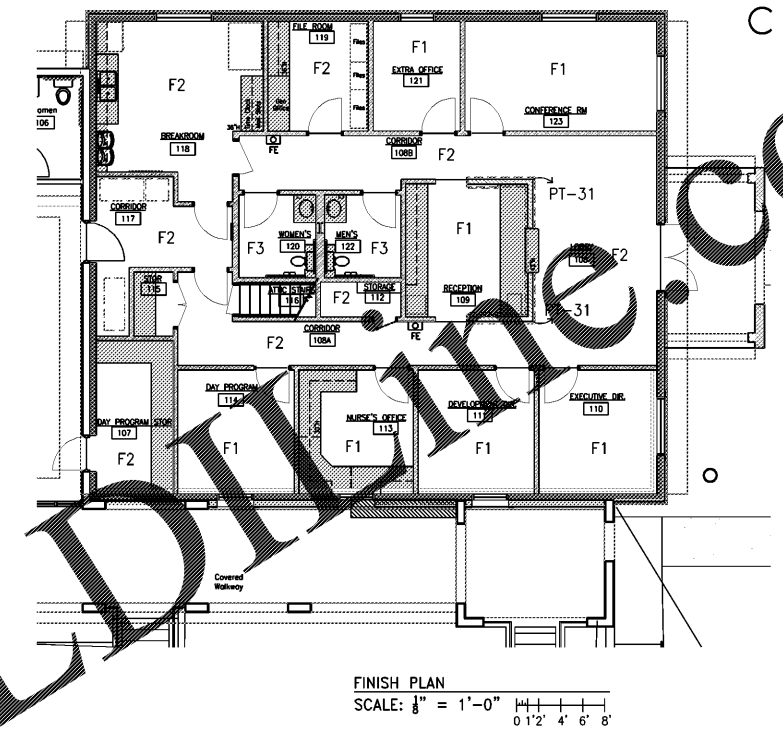
MARK	DATE

SHEET NAME
Attic Floor Plan & Finish Schedule

PROJECT NO. 2018-16

DATE OCTOBER 3, 2018

SHEET NO.



ATTIC FLOOR PLAN
SCALE: 1/4" = 1'-0"

ROOM FINISH SCHEDULE												
ROOM NUM.	ROOM NAME	FLOOR	WALLS				CEILING	CEILING HEIGHT	BASE	COUNTER TOP	CABINET	NOTES
			N	E	S	W						
107	DAY ROOM STORAGE	F2	W1/PT-30	W1/PT-30	W1/PT-30	W1/PT-30	C1	10'-0"	B1	--	PL4	
108	LOBBY	F2	W1/PT-31	W1/PT-30	W1/PT-30	W1/PT-30	C1/C2 PT-30	10'-0"	B1	--	--	
108A	CORRIDOR	F2	W1/PT-30	W1/PT-30	W1/PT-30	W1/PT-30	C1	10'-0"	B1	--	--	3
108B	CORRIDOR	F2	W1/PT-30	W1/PT-30	W1/PT-30	W1/PT-30	C1	10'-0"	B1	--	--	3
109	RECEPTION	F1	W1/PT-30	W1/PT-30	W1/PT-30	W1/PT-30	C1/C2 PT-30	9'-6"	B1	PL1	PL1/PL2/PL3/PL4	3
110	EXECUTIVE DIR'S OFFICE	F1	W1/PT-30	W1/PT-30	W1/PT-30	W1/PT-30	C1	10'-0"	B1	--	--	3
111	DEVELOPMENT DIR'S OFFICE	F1	W1/PT-30	W1/PT-30	W1/PT-30	W1/PT-30	C1	10'-0"	B1	--	--	3
112	STORAGE	F2	W1/PT-30	W1/PT-30	W1/PT-30	W1/PT-30	C2 PT-30	10'-0"	B1	--	PL4	1
113	NURSE'S OFFICE	F1	W1/PT-30	W1/PT-30	W1/PT-30	W1/PT-30	C1	10'-0"	B1	PL1	PL1/PL4	3
114	DAY PROGRAM'S OFFICE	F1	W1/PT-30	W1/PT-30	W1/PT-30	W1/PT-30	C1	10'-0"	B1	--	--	3
115	STORAGE	F2	W1/PT-30	W1/PT-30	W1/PT-30	W1/PT-30	C1	10'-0"	B1	--	PL4	1
116	ATTIC STAIRS	--	W1/PT-30	W1/PT-30	W1/PT-30	W1/PT-30	--	--	--	--	--	
117	CORRIDOR	F2	W1/PT-30	W1/PT-30	W1/PT-30	W1/PT-30	C1/C2 PT-30	10'-0"	B1	--	--	
118	BREAK ROOM	F2	W1/PT-30	W1/PT-30	W1/PT-30	W1/PT-30	C1/C2 PT-30	10'-0"	B1	PL1	PL1/PL2/PL4	
119	FILE ROOM	F2	W1/PT-30	W1/PT-30	W1/PT-30	W1/PT-30	C1/C2 PT-30	10'-0"	B1	PL1	PL1/PL2/PL4	
120	WOMEN'S RESTROOM	F3	W1/PT-30	W1/PT-30	W1/PT-30	W1/PT-30	C1	10'-0"	B2	PL1	PL1/PL4	4, 6
121	EXTRA OFFICE	F1	W1/PT-30	W1/PT-30	W1/PT-30	W1/PT-30	C1	10'-0"	B1	--	--	3
122	MEN'S RESTROOM	F3	W1/PT-30	W1/PT-30	W1/PT-30	W1/PT-30	C1	10'-0"	B2	PL1	PL1/PL4	4, 6
123	CONFERENCE ROOM	F1	W1/PT-30	W1/PT-30	W1/PT-30	W1/PT-30	C1	10'-0"	B1	--	--	3
200	ATTIC	--	--	--	--	--	--	--	--	--	--	

ROOM FINISH SCHEDULE KEY

FINISHES BELOW ARE FOR PRICING PURPOSES ONLY. FINAL APPROVAL OF FINISHES FROM OWNER REQUIRED PRIOR TO ORDERING.

FLOOR:

F1 MANUFACTURER: MANNINGTON, 18"x36" PLANK CARPET TILE, HORIZONTAL BRICK ASHLAR PATTERN. PATTERN: URBAN GRID COLLECTION, SCAFFOLD. COLOR: DISTRICT #13219. MANUFACTURER: INTERFACE, LVT. PATTERN: LEVER SET COLLECTION. MANUFACTURER: WOODGRAINS. COLOR: DISTRICT WALNUT #A0040.

F2 MANUFACTURER: AMERICAN OLEAN GLAZED CERAMIC FLOOR TILE. PATTERN: POZZALO, 12"x12". COLOR: SAIL WHITE #P291.

F3 MANUFACTURER: AMERICAN OLEAN GLAZED CERAMIC FLOOR TILE. PATTERN: POZZALO, 12"x12". COLOR: SAIL WHITE #P291.

CEILING:

C1 2x4 @ 24" ARISTON (OR EQUAL) ACOUSTICAL CEILING SYSTEM W/ SOUND ATTENUATING BATT INSULATION EXTENDING 4" ON BOTH SIDES OF WALLS. COLOR: WHITE.

C2 GYP. BOARD FURR'D DOWN, PAINT.

WALL:

W1 2x4 @ 24" WOOD STUDS @ 16" O.C., 5/8" GYP. BOARD, FULLY INSULATE TO 6" ABOVE CEILING. ONE COAT OF PRIMER, TWO COATS OF FINISH (MOLD/MOISTURE RESISTANT @ WATER AREAS, INCLUDING BUT NOT LIMITED TO: SINKS, DRINKING FOUNTAINS, WASHING MACHINE, & TOILETS) - FRP PANEL BEHIND DRINKING FOUNTAINS, REFER TO INTERIOR ELEVATIONS. COLOR TO BE SELECTED BY ARCHITECT.

PAINT & STAIN SCHEDULE

PT-30 PAINT: SW7636 ORIGAMI WHITE, EGGSHELL (THROUGHOUT, EXCEPT WHERE NOTED)

PT-31 PAINT: ARCHITECT AND OWNER TO DECIDE, EGGSHELL (ACCENT PAINT)

ROOM FINISH SCHEDULE KEY (CONT'D)

BASE:

B1 MANUFACTURER: JOHNSONITE. 4" RUBBER COVE BASE. COLOR: 20 CHARCOAL WG.

B2 MANUFACTURER: AMERICAN OLEAN GLAZED CERAMIC FLOOR TILE. FLOOR BULLNOSE: #P-4309. PATTERN: POZZALO, 12"x12". COLOR: SAIL WHITE #P291.

PLASTIC LAMINATE & SOLID SURFACE

PL1 FORMICA, COLOR: NATURAL WHITE #918-58 (COUNTERTOPS)

PL2 FORMICA, COLOR: MOUSE #928-58 (WALL & BASE CABINETS)

PL3 WILSONART SOLID SURFACE (OR EQUAL), COLOR: MOON GEYSER #9209CM (TRANSACTION COUNTER)

PL4 WHITE MELAMINE (STORAGE ROOM SHELVES & INTERIOR OF MILLWORK)

GENERAL ROOM FINISH SCHEDULE NOTES

- INSTALL PLYWOOD BETWEEN STUD AND GYP. BOARD. REFER TO PLAN AND WALL SECTIONS FOR FURTHER INFORMATION.
- REFER TO INTERIOR ELEVATIONS FOR LAMINATE LOCATIONS.
- INSTALL FLUSH, RESILIENT TRANSITION STRIP BETWEEN DIFFERENT FLOORING MATERIALS, EXCEPT HARD TILE.
- INSTALL REDUCING STAINLESS STEEL TRANSITION STRIP BETWEEN HARD TILE AND ADJOINING FLOOR MATERIAL.
- INTERIOR DOOR FRAMES TO MATCH ADJOINING WALL COLOR.
- RESTROOM WALL CABINETS AND COUNTERTOPS TO BE PL-1.