

DOOR SCHEDULE

MARK	SIZE	STYLE	ELEV.	HDW. GRP.	REMARKS
1	PR- 3'-0"x8'-0"x1 3/4"	STOREFRONT	A	PUSH/PULLS	BRONZE FINISHED
2	3'-0"x8'-0"x1 3/4"	STOREFRONT	B	PUSH/PULLS	BRONZE FINISHED
3	3'-0"x8'-0"x1 3/4"	HOLLOW METAL	E	1	LOCKSET/PANIC HARDWARE
4	3'-0"x7'-0"x1 3/4"	HOLLOW METAL	E	1	PANIC HARDWARE

HARDWARE GROUPS

ALL DOORS TO HAVE BRONZE CLOSERS

GROUP #1: EACH DOOR TO RECEIVE: (1) LOCKSET WITH PANIC HARDWARE.
 (1) SET OF WEATHERSTRIPPING
 (3) HINGES WITH TAMPER PROOF, NON REMOVABLE PINS
 (1) THRESHOLD
 (1) DOOR CLOSER
 (1) RAIN DRIP AT HEAD OF DOOR
 (1) LATCH GUARD
 (1) KICKPLATE
 (1) PEEPHOLE

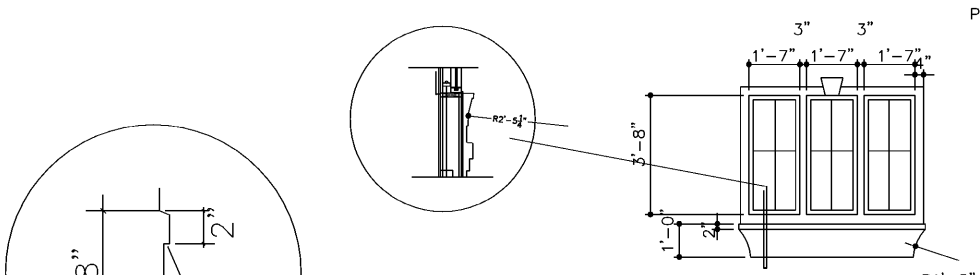
NOTE: STOREFRONT DOOR TO HAVE NO LATCHES- PUSH/PULLS ONLY
 CLOSER AND SHALL REMAIN UNLOCKED DURING BUSINESS HOURS
 SUBMITT PUSH/PULL DEVICES TO OWNER FOR APPROVAL
 POST SIGN "DOOR IS TO REMAIN UNLOCKED DURING OPERATING HOURS" AT MAIN ENTRY
 DOORS WITH OUT PANIC HARDWARE TO HAVE LEVERED ADA COMPLIANT HARDWARE
 DOORS STOREFRONT AND LIGHT FIXTURES TO BE BRONZE
 CONTRACTOR TO SUBMIT SAMPLES TO DEVELOPER FOR APPROVAL

FINISH SCHEDULE

SPACE	FLOOR		WALLS	CEILING
	COVERING	BASE		
LADDER ROOM	SMOOTH TROWEL CONCRETE		PAINTED GWB	EXPOSED DECK
ALL LIGHTS AND FINISHES SELECTED BY OWNER				
ALL FINISHES ARE TO BE CLASS C				

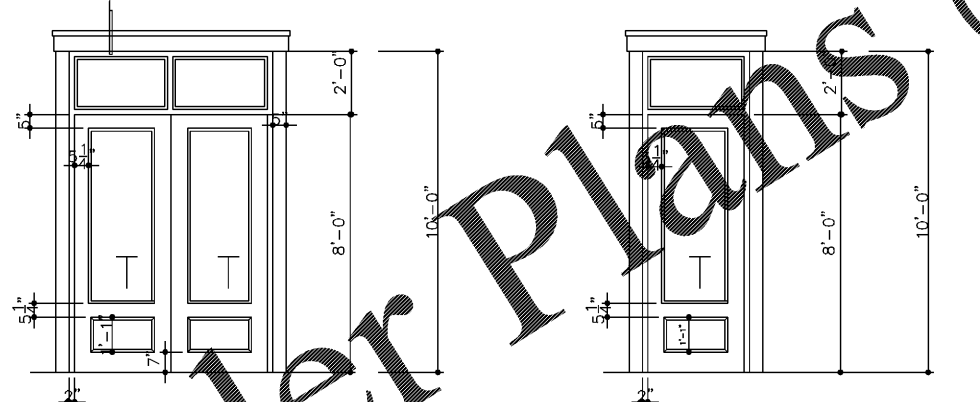
GENERAL NOTES:

- CONTRACTOR SHALL FIELD VERIFY ALL OPENINGS FOR EXACT GLASS AND FRAME SIZES PRIOR TO STARTING FABRICATION OF ALUMINUM STOREFRONT FRAMES.
- ALL GLASS TO BE TEMPERED WHERE REQUIRED BY CODE.
- SEE SPECIFICATIONS FOR FINISH AND COLOR OF ALUMINUM STOREFRONT FRAME.
- ALL STOREFRONT FRAMES TO BE STANDARD SIZES. CONTRACTOR TO INCREASE STRUCTURAL STRENGTH OF ALUMINUM FRAMES AS REQUIRED TO ACCOMMODATE SPANS INDICATED ABOVE, FOR WIND LOADING CONDITIONS.
- SEE FLOOR PLAN FOR EXACT DIRECTION OF DOOR SWINGS.
- CONTRACTOR TO SUBMIT SHOP DRAWINGS TO ARCHITECT FOR REVIEW PRIOR TO COMMENCEMENT OF FABRICATION.

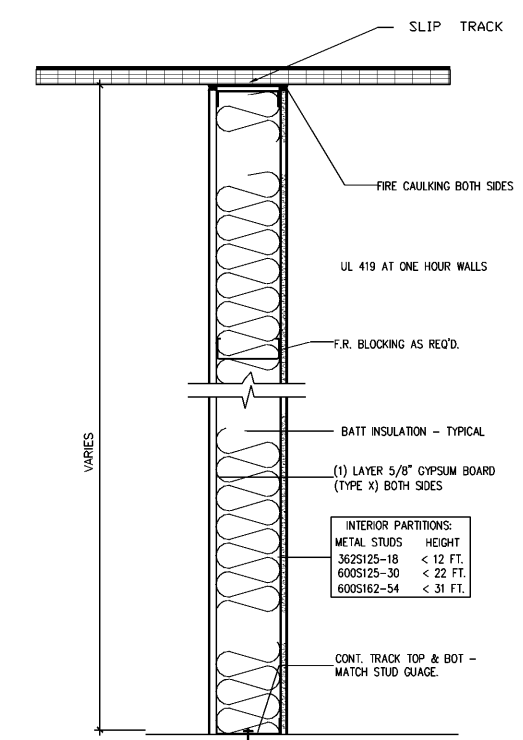


WINDOW TYPES

CENTER WINDOWS IN ARCHITECTURAL ELEVATION ELEMENT IF NOT NOTED OTHERWISE
 4" MIN. BAND WIDTH AT ALL WINDOWS AND DOORS
 UPPER WINDOWS TO HAVE LIGHT TINT



DOOR TYPES



A RATED WALL

ROY WILLIAMS ARCHITECT, INC.
 ARCHITECTURE * LAND PLANNING * GRAPHICS
 2465 US-1, SUITE 84, ST. AUGUSTINE, FL. 32086 - 904.422.8886 - RWARCHITECTUREGROUP@GMAIL.COM

BUILDING 2
 BRANAN FIELD WALK
 MIDDLEBURG, FLORIDA
 WALL TYPE / SCHEDULES/DOOR AND WINDOW TYPES

DATE	BY	REVISIONS:

This drawing is an instrument of service and shall remain the property of Roy Williams Architect, Inc. The use of this drawing shall be restricted to the original site for which it is prepared and publication thereof is expressly limited to such use.
 Date: 10/1/2018
 Scale: NTS
 Drawn: CW
 Checked: RCW
 Sheet No: A-8