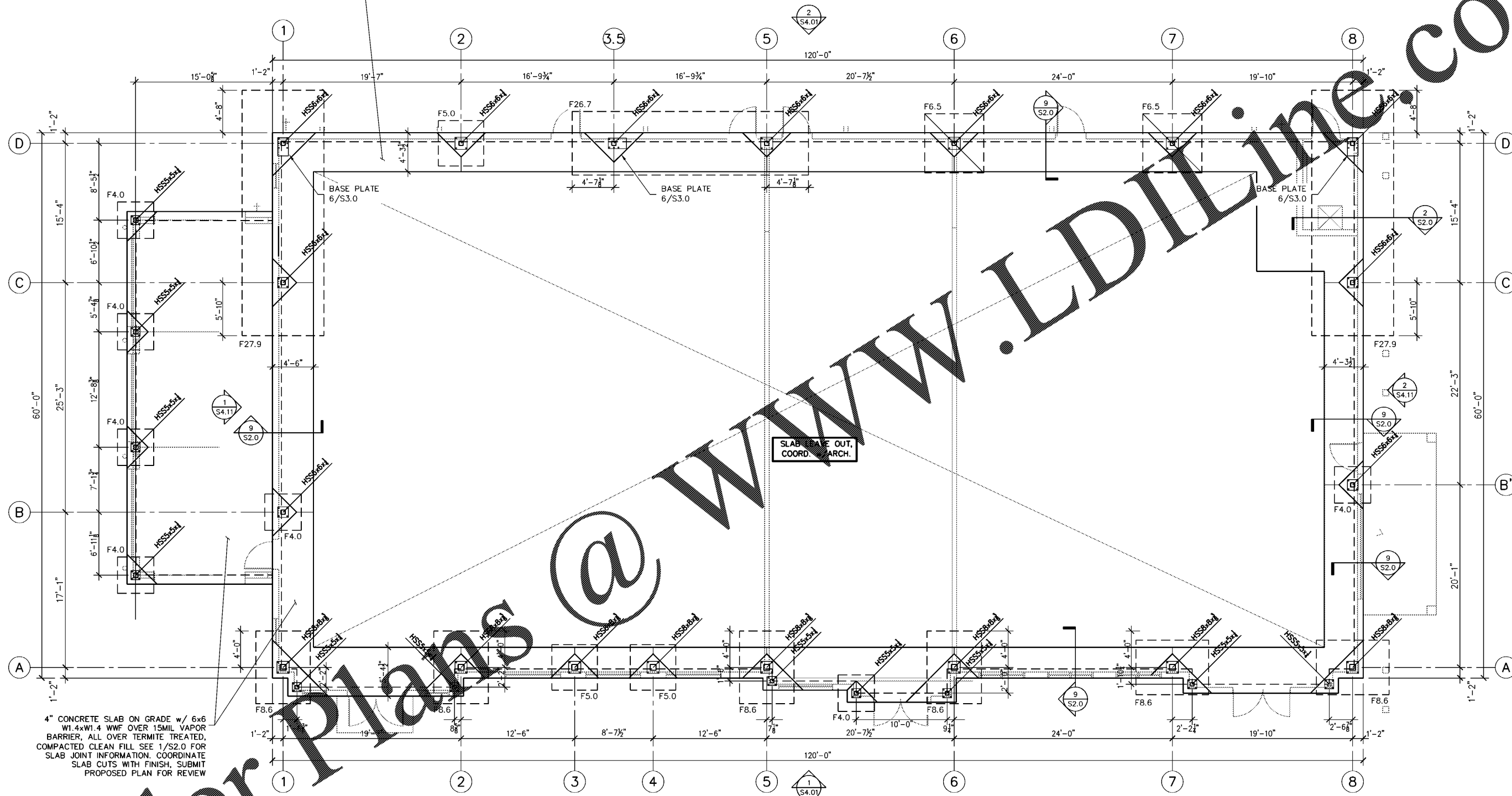


4" CONCRETE SLAB ON GRADE w/ 6x6 W1.4xW1.4 WWF OVER 15MIL VAPOR BARRIER, ALL OVER TERMITE TREATED, COMPACTED CLEAN FILL SEE 1/S2.0 FOR SLAB JOINT INFORMATION. COORDINATE SLAB CUTS WITH FINISH. SUBMIT PROPOSED PLAN FOR REVIEW

4" CONCRETE SLAB ON GRADE w/ 6x6 W1.4xW1.4 WWF OVER 15MIL VAPOR BARRIER, ALL OVER TERMITE TREATED, COMPACTED CLEAN FILL SEE 1/S2.0 FOR SLAB JOINT INFORMATION. COORDINATE SLAB CUTS WITH FINISH. SUBMIT PROPOSED PLAN FOR REVIEW



**BLDG. 1**  
**FOUNDATION AND GROUND FLOOR PLAN**  
 SCALE: 3/16" = 1'-0"

- PLAN NOTES:**
- 1). F.X.X DENOTES FOOTING TYPE, SEE SCHEDULE THIS SHEET.
  - 2). STRUCTURAL ELEVATIONS ARE BASED ON MAIN SLAB DATUM ELEV. (+0'-0"). SEE CIVIL FOR ACTUAL ELEVATION.
  - 3). TOP OF EXTERIOR FOOTINGS ARE 16" BELOW FINISH FLOOR, ELEV. (-1'-4") U.N.O.
  - 4). SEE ARCH. FOR FLOOR SLOPES, DIMS AND STEPS NOT SHOWN.
  - 5). PROVIDE SLAB CRACK CONTROL JOINTS PER DETAIL 1/S2.0 @ 16'-0" O.C. MAX. COORDINATE SLAB JOINTS w/ ARCH. FINISH
  - 6). SEE DETAIL 6/S2.0 FOR TYPICAL PIPE UNDER FOOTING DETAIL.
  - 7). PROVIDE CORNER BARS TO MATCH CONTINUOUS FOOTING REINFORCEMENT PER 7/S2.0.
  - 8). FOR BRACING, SEE ELEVATIONS ON S4.01 TO S4.12.

**FOOTING SCHEDULE AND NOTES**

TYPE	LENGTH	WIDTH	DEPTH	BAR
F4.0	4'-0"	4'-0"	1'-4"	5-#5 EA. WAY TOP & BOT.
F5.0	5'-0"	5'-0"	1'-4"	6-#5 EA. WAY TOP & BOT.
F6.5	6'-6"	6'-6"	1'-6"	9-#5 EA. WAY TOP & BOT.
F6.6	8'-0"	6'-0"	1'-6"	9-#6 TOP&BOT (LONG WAYS) #6@12" TOP&BOT (SHORT WAYS)
F26.7	26'-0"	7'-0"	2'-0"	9-#6 TOP&BOT (LONG WAYS) #6@12" TOP&BOT (SHORT WAYS)
F27.9	27'-0"	9'-0"	2'-0"	9-#6 TOP&BOT (LONG WAYS) #6@12" TOP&BOT (SHORT WAYS)

1. THIS FOUNDATION PLAN ONLY CONVEYS STRUCTURAL INFO. RELATED TO THE FOUNDATION. FOR GENERAL FEATURES, DIMENSIONS, CONDUITS, ELECTRICAL EMBEDS, STEP HEIGHTS, ECT., SEE ARCH. PLAN, ARCHITECTURAL PLAN SHOWN HERE IN FOR REFERENCE ONLY.
2. FTGS. & FND. SHALL BE IN ACCORDANCE w/ LOCAL BUILDING CODES.
3. SOIL COMPACTION AND FILL SHALL BE COMPACTED TO A MIN. OF 95% MODIFIED PROCTOR IN ACCORDANCE WITH ASTM D 1557.

**SABO**  
 STRUCTURAL  
 ENGINEERING  
 1205 BEACH BLVD  
 JAY BEACH, FL  
 904-712-5750  
 CHRIS@SABOENG.COM

CHRISTOPHER J. SABOURIN  
 LICENSED PROFESSIONAL ENGINEER  
 No. 71461  
 STATE OF FLORIDA

10.01.18  
 Christopher J Sabourin PE  
 FL PE#71461

PLAN NAME	DATE
BRANAN FIELD WALK	10.01.18
ISSUE	DATE
PERMIT	10.01.18
REVISIONS	DATE

ISSUE	DATE
PERMIT	10.01.18
REVISIONS	DATE

STRUCTURAL ENGINEERING FOR  
 BUILDING 1  
 BRANAN FIELD WALK  
 MIDDLEBERG, FL

**FIELD ALTERATION**  
 CONTRACTOR SHALL CONTACT CHRISTOPHER SABOURIN PE PRIOR TO MAKING ANY STRUCTURAL FIELD MODIFICATIONS WHICH MAY VARY FROM THE INTENT OF THE ORIGINAL CONTRACT DOCUMENTS. ANY FIELD ALTERATIONS MADE PRIOR TO BEING APPROVED BY CHRISTOPHER SABOURIN MAY RESULT IN ADDITIONAL ENGINEERING OR INSPECTION FEES.

**SCALING**  
 DO NOT SCALE DIMENSIONS FROM THESE DRAWINGS. IF A DIMENSION IS UNCLEAR REFER TO THE ARCHITECTURAL DRAWINGS OR CONTACT THE EDR.

**BLDG. 1**  
**FOUNDATION**  
**AND GROUND**  
**FLOOR**  
**PLAN**