

GENERAL NOTES

- (A) REFER TO PROJECT MANUAL FOR ADDITIONAL REQUIREMENTS.
- (B) DIMENSIONS ARE TO ROUGH FACE OF CONCRETE, FRAMING, OR CENTER LINE OF STRUCTURE UNLESS OTHERWISE INDICATED.
- (C) REFER TO CIVIL DRAWINGS FOR ADDITIONAL REQUIREMENTS.
- (D) REFER TO ARCHITECTURAL EXTERIOR FINISH SCHEDULE FOR MATERIAL TYPES, COLORS, AND FINISHES. UNLESS OTHERWISE INDICATED PROVIDE FINISHES AS FOLLOWS:
 1. ALL NON-GALVANIZED METAL PARTS TO BE PRIME AND PAINTED (2) COATS SHERWIN WILLIAMS "DURACON" "MINT CLUB".
 2. POLYMER COMPOSITE MATERIAL COLOR TO BE SELECTION TO "PEX" SELECT SERIES "PEBBLE GREY". FINAL COLOR TO BE APPROVED BY OWNER FROM MANUFACTURER'S STANDARD SAMPLES.

1736 East Sunshine, Suite 100
Springfield, Missouri 65804
417.862.0558
e-mail: architect@esterlyschneider.com

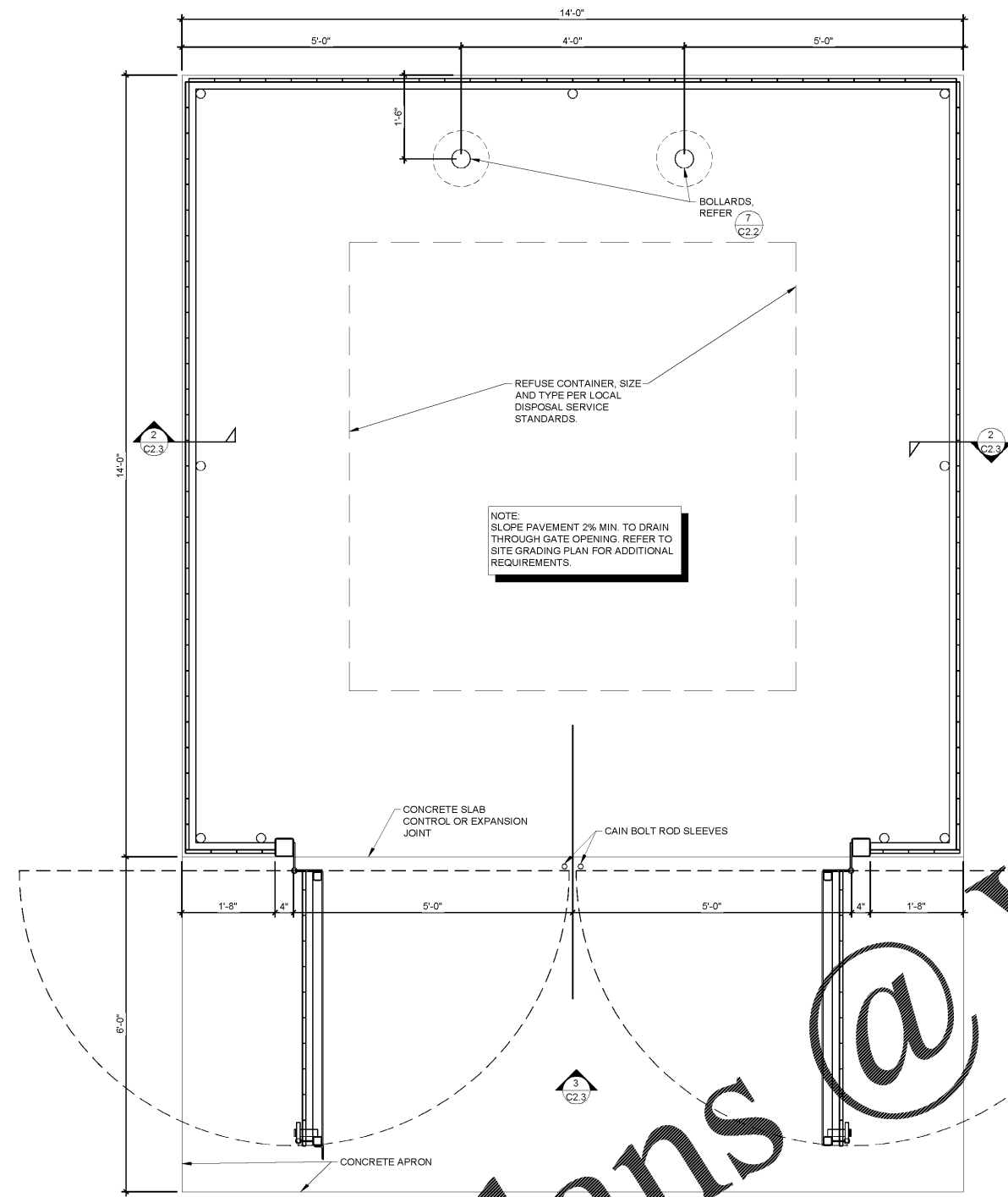
ESTERLY & SCHNEIDER ASSOCIATES, INC.
architects & planners
AIA

PROJECT:
NEW O'REILLY AUTO PARTS STORE
U.S. HWY 64
SOMERVILLE, TN
SITE DETAILS

O'Reilly AUTO PARTS
CORPORATE OFFICES
233 SOUTH PATTERSON
SPRINGFIELD, MISSOURI 65802
(417) 862-2674 TELEPHONE

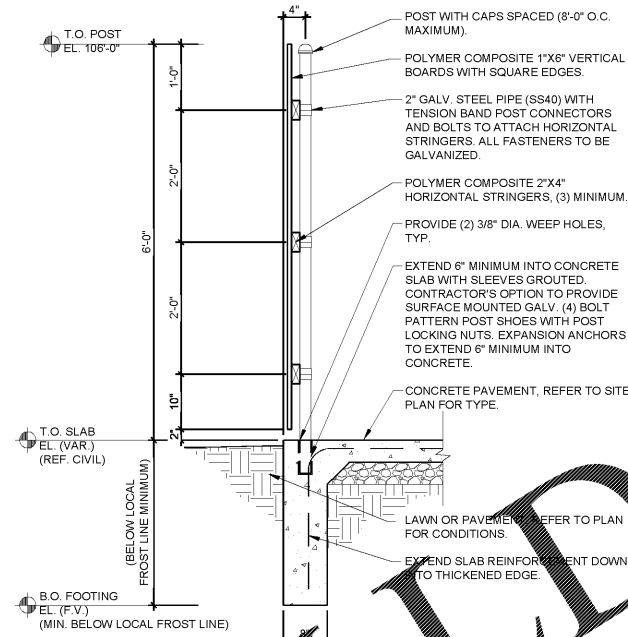
COMM # 4231
DATE: 9-11-18
REVISION
DATE:

C2.3



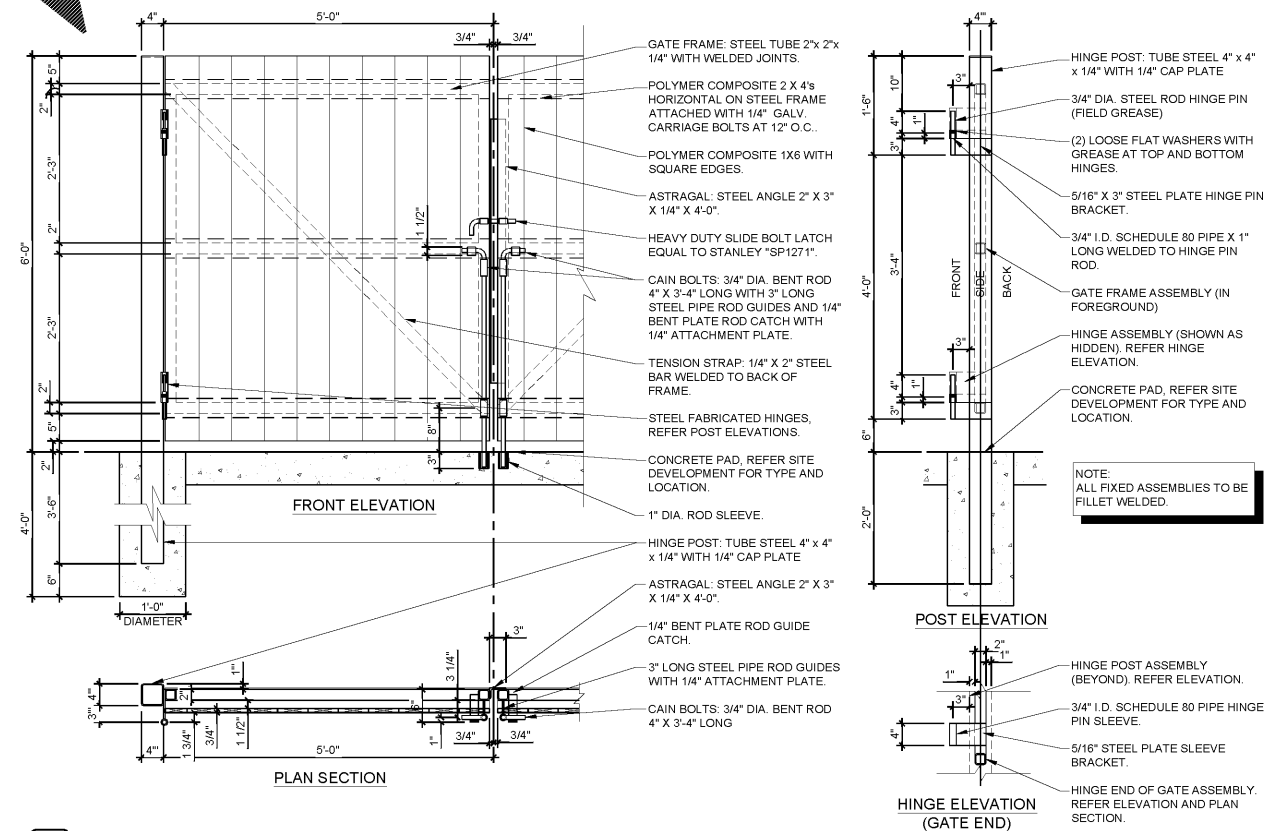
1 POLYMER COMPOSITE MATERIAL SCREEN FENCE REFUSE ENCLOSURE PLAN

C2.3 SCALE: 3/4" = 1'-0"



2 SCREEN FENCE SECTION

C2.3 SCALE: 3/4" = 1'-0"



3 SCREEN FENCE GATE DETAILS

C2.3 SCALE: 3/4" = 1'-0"