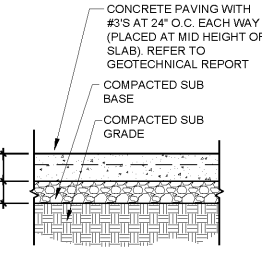
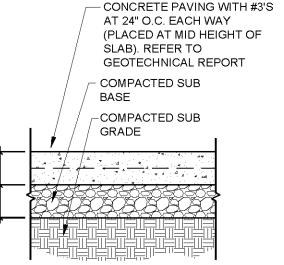


PROVIDE CONTROL JOINTS AT 12'-0" O.C. (25% SLAB THICKNESS)



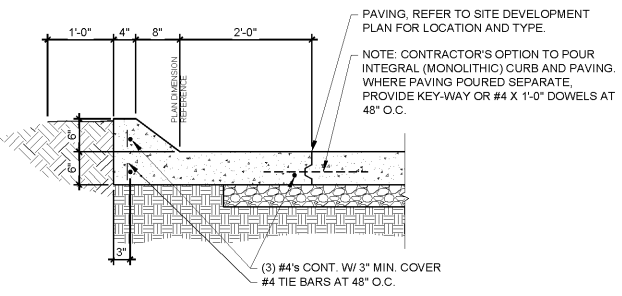
**1 CONCRETE (STANDARD DUTY)**  
C2.2 SCALE: 3/4" = 1'-0"

PROVIDE CONTROL JOINTS AT 12'-0" O.C. (25% SLAB THICKNESS)



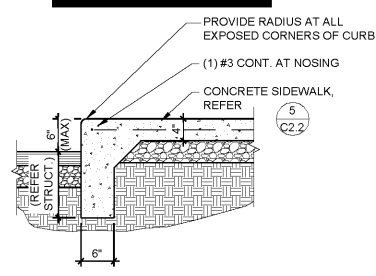
**2 CONCRETE (HEAVY DUTY) PAVING SECTION**  
C2.2 SCALE: 3/4" = 1'-0"

PROVIDE CONTROL JOINTS AT 10'-0" O.C. (25% SLAB THICKNESS)



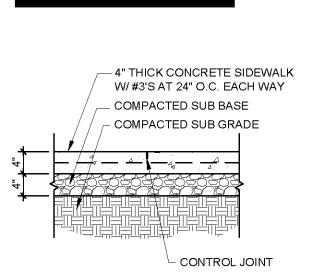
**3 CONCRETE CURB SECTION**  
C2.2 SCALE: 3/4" = 1'-0"

NOTE: REFER TO SITE GRADING PLAN FOR ELEVATIONS OF PAVEMENT ADJACENT TO SIDEWALKS.



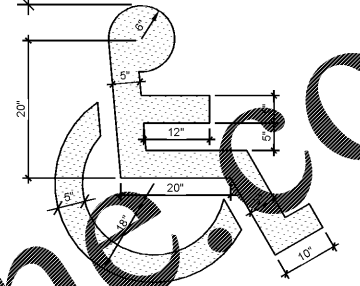
**4 CONCRETE SIDEWALK CURB SECTION**  
C2.2 SCALE: 3/4" = 1'-0"

PROVIDE TOOLED CONTROL JOINTS AT 6' O.C. (25% SLAB THICKNESS) AND ISOLATION JOINTS AT 24' O.C., UNLESS OTHERWISE NOTED.

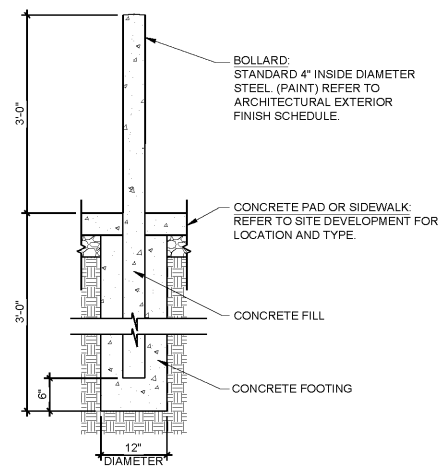


**5 CONCRETE SIDEWALK SECTION**  
C2.2 SCALE: 3/4" = 1'-0"

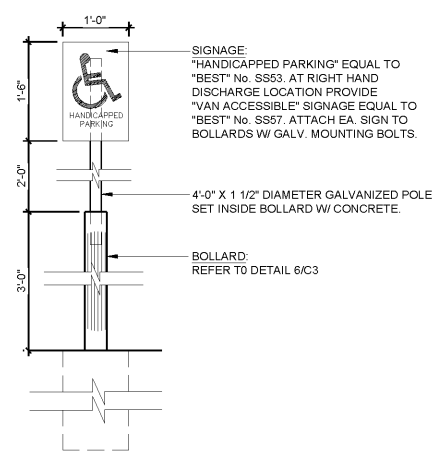
NOTE: SYMBOL TO BE PAINTED (HIGHWAY GRADE) OR DECAL ADHERED TO PAVEMENT. COLOR TO MATCH STRIPING UNLESS OTHERWISE REQUIRED BY LOCAL ACCESSIBILITY STANDARDS.



**6 ACCESSIBLE PARKING PAVEMENT STRIPING DETAIL**  
C2.2 SCALE: 3/4" = 1'-0"

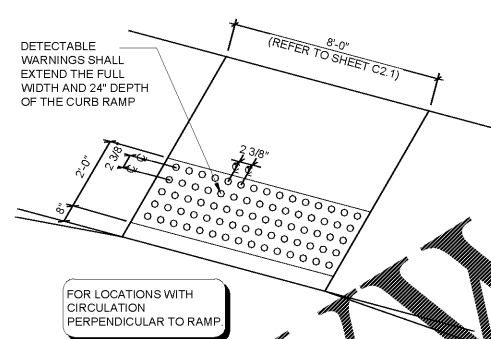


**7 STEEL BOLLARD SECTION**  
C2.2 SCALE: 3/4" = 1'-0"



**8 HANDICAP PARKING SIGN DETAIL**  
C2.2 SCALE: 3/4" = 1'-0"

PROVIDE DETECTABLE WARNINGS WITH RAISED PATTERN (CAUTION YELLOW COLOR WITH .9\"/>



**9 DETECTABLE WARNING DETAIL**  
C2.2 SCALE: (NOT TO SCALE)

**10 NOT USED**  
C2.2 SCALE: N/A

**11 NOT USED**  
C2.2 SCALE: N/A

**BFW** | ACCO | FARMER | WORKMAN  
ENGINEERING & TESTING, INC.  
1000 S. FARMER ROAD | SPRINGFIELD, MISSOURI 65802  
PH: 417.862.3245 | FAX: 417.862.3245 | WWW.BFW-ETI.COM



1736 East Sunshine, Suite 200  
Springfield, Missouri 65804  
417.862.0558  
e-mail: architect@esteryschneider.com

**ESTERY & SCHNEIDER ASSOCIATES, INC.**  
architects & planners  
AIA

PROJECT: **NEW O'REILLY AUTO PARTS STORE**  
U.S. HWY 64  
SOMERVILLE, TN  
**SITE DETAILS**

**O'Reilly AUTO PARTS**  
CORPORATE OFFICES  
233 SOUTH PATTERSON  
SPRINGFIELD, MISSOURI 65802  
(417) 862-2674 TELEPHONE

COMM # 4231  
DATE: 9-11-18  
REVISION  
DATE: