

EXTERIOR LIGHT FIXTURE SCHEDULE

ALL ITEMS LISTED ON THE "LIGHT FIXTURE SCHEDULE" WILL BE SUPPLIED BY THE OWNER (O'REILLY). ITEMS SHALL BE DIRECT ORDERED AND OR RELEASED FROM THE LISTED ELECTRICAL EQUIPMENT DISTRIBUTOR:											
GRAYBAR ELECTRIC CO. INC. 11885 LACKLAND ROAD ST. LOUIS, MO 63146											
GRAYBAR O'REILLY TEAM EMAIL: orilly@graybar.com TOLL FREE: (314) 573-2980											
MARK	MFR.	CATALOG NUMBER	SUPPLY VOLTAGE	FINISH	MOUNTING			LAMPS		FIXTURE QUANTITY	
					SURFACE WALL	SURF. CEILING	OTHER	TYPE	QUANTITY		
WATTAGE	NOTES										
LED EXTERIOR LIGHTS											
WS1	LSI	XWM-FT-LED-06L-50-UE-BRZ NO SUBSTITUTIONS	120	DARK BRONZE	X		X	1	59	FULL CUT-OFF, BUG RATING B1-U0-G1. ARCHITECTURAL ELEVATIONS SHOW DIMENSIONED LOCATIONS.	7
LED POLE LIGHTS											
P3	LSI	XALM-5W-LED-SS-50-UE-BRZ-IL	120	DARK BRONZE		X	X	1	154	ADVANCE BALLASTS, FULL CUT-OFF, NO SUBSTITUTIONS. ANCHOR BOLTS W/HARDWARE & TEMPLATE, WITH INTERNAL LOUVER HOUSE SIDE SHIELD BUG RATING B2-UG-G2	2

FIXTURE QUANTITY TO BE VERIFIED WITH SITE PLAN QUANTITY

AUTOMATIC LIGHTING CONTROL

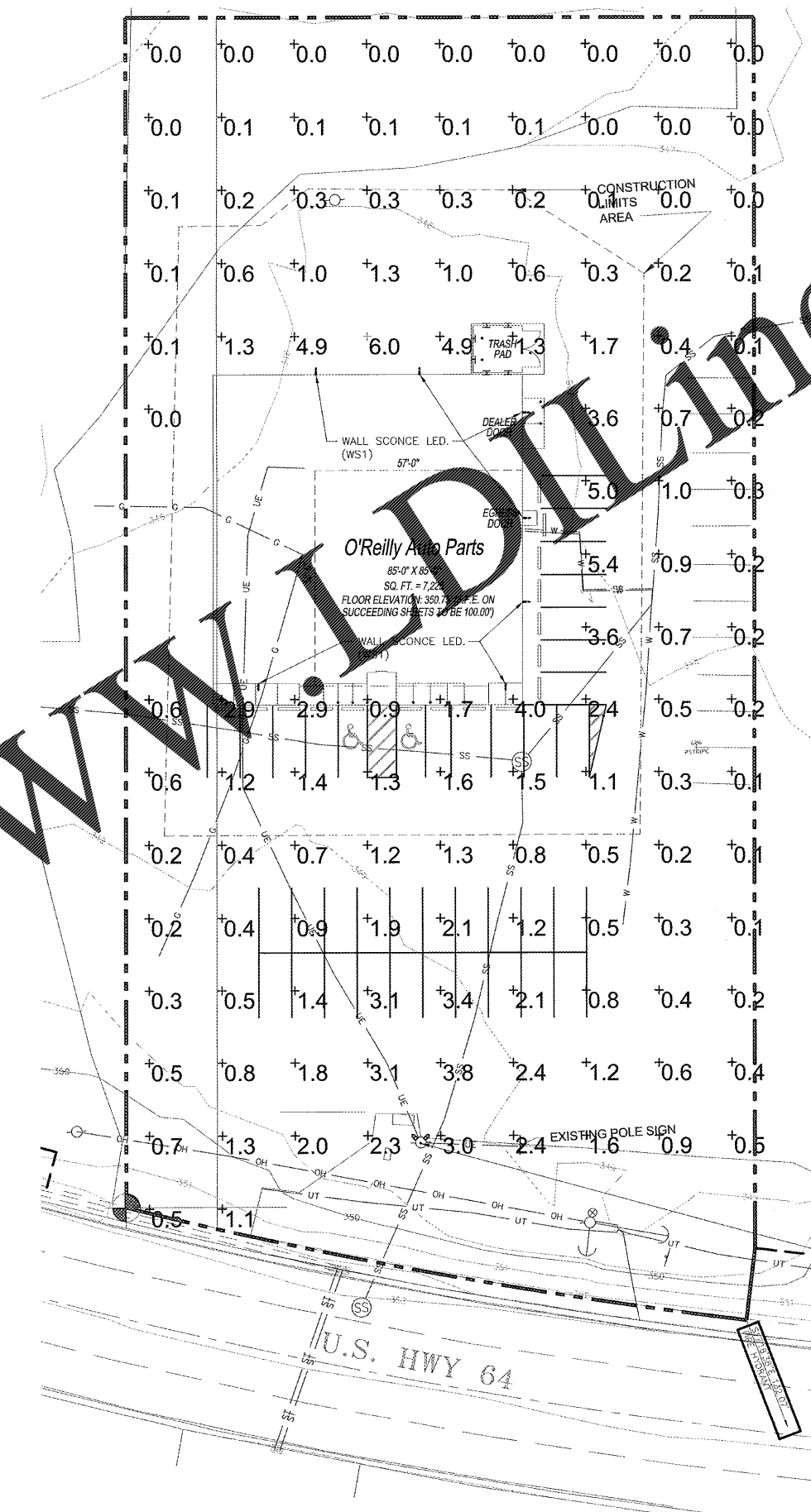
COMPLIANCE WITH ENERGY CODE IS ACHIEVED BY:

- ONCE THE EMS HAS BEEN PROGRAMMED, THE INTERIOR AND EXTERIOR LIGHTS WILL TURN ON AND OFF USING THE FOLLOWING LOGIC: SEE EM SHEETS.
 - INTERIOR WORK LIGHTS WILL TURN ON WITH FIRST MOTION IN THE STORE AND WILL TURN OFF 15 MINUTES AFTER LAST MOTION ONCE THE STORE IS CLOSED.
 - INTERIOR SALES LIGHTS WILL TURN ON AT STORE OPENING AND TURN OFF 15 MINUTES AFTER STORE CLOSING.
 - EXTERIOR SIGN LIGHTS WILL TURN ON WHEN ITS DARK ENOUGH OUTSIDE ANYTIME DURING STORE HOURS, AND WILL TURN OFF AT STORE CLOSING.
 - EXTERIOR SITE LIGHTS WILL TURN ON WHEN IT IS DARK ENOUGH OUTSIDE AND IT IS WITHIN STORE HOURS OR THERE IS MOTION IN THE STORE. THEY WILL TURN OFF 30 MINUTES AFTER LAST MOTION ONCE THE STORE IS CLOSED.
- RESTROOMS AND OFFICES: ALL LIGHTING IN THESE AREAS ARE CONTROLLED BY OCCUPANT-SENSING DEVICES.

BACKLIGHT-UPLIGHT-GLARE (BUG) RATING / FULL CUTOFF

SEE CUT-SHEET BELOW OF EXTERIOR LIGHT FIXTURES. ALL OF THE LSI XALM & XWM LED FIXTURES HAVE ZERO UPLIGHT AND ARE CONSIDERED "FULL CUT OFF" AND DARKSKY COMPLIANT". BELOW ARE THE "BUG" RATINGS, AS TESTED TO IDENTIFY HOW MUCH OF THE LIGHT GOES BACKWARDS, UPWARDS AND TO THE GROUND. THE CHART BELOW SHOWS THAT THESE FIXTURES HAVE BUG RATINGS WITH (UPLIGHT) U = 0.

LSI Outdoor LED Fixture BUG Summary						
Catalog Number	Fixture Lumens	Fixture Watts	Lumens/Watt	IES Class	Long. Class	BUG Rating
XALM-3-LED-SS-50-IL	15,647	154	102	Type III	Short	B1-U0-G3
XALM-5W-LED-SS-50-IL	11,831	153	77	Type III	Short	B2-U0-G2
XALM-FT-LED-SS-50-IL	14,362	154	93	Type IV	Short	B2-U0-G3
XWM-3-LED-06-50	6,571	84	122	Type III	Medium	B1-U0-G2
XWM-FT-LED-06-50	6,523	84	121	Type IV	Short	B1-U0-G2



1736 East Sunshine, Suite 417
Springfield, Missouri 65804
417.862.8600
Fax: 417.862.3265
e-mail: architect@esterytschneider.com

ESTERY SCHNEIDER & ASSOCIATES, INC.
architects & planners
AIA

PROJECT:
NEW O'REILLY AUTO PARTS STORE
U.S. HWY 64
SOMERVILLE, TN
SITE LIGHTING PHOTOMETRICS

O'Reilly AUTO PARTS
CORPORATE OFFICES
233 SOUTH PATTERSON
SPRINGFIELD, MISSOURI 65802
(417) 862-2674 TELEPHONE

COMM # 4231
DATE: 09-11-18
REVISION DATE:



Order Plans @ www.donline.com

SITE LIGHTING PHOTOMETRICS

SCALE: 1"=20' SCALE: 1"=20'-0"

