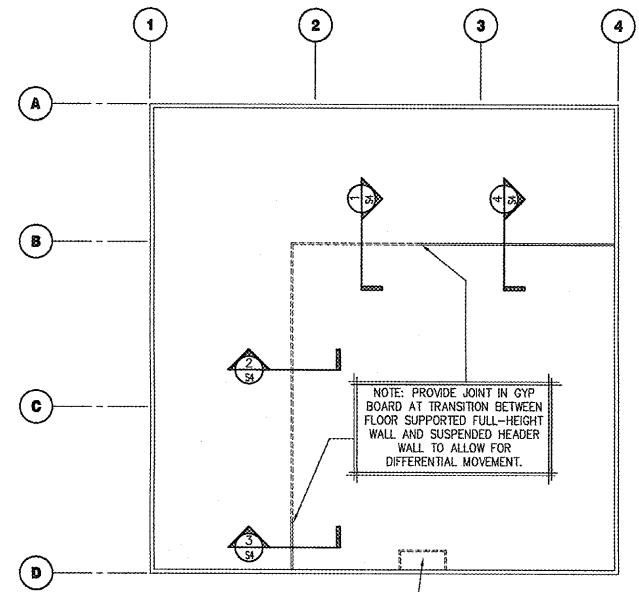
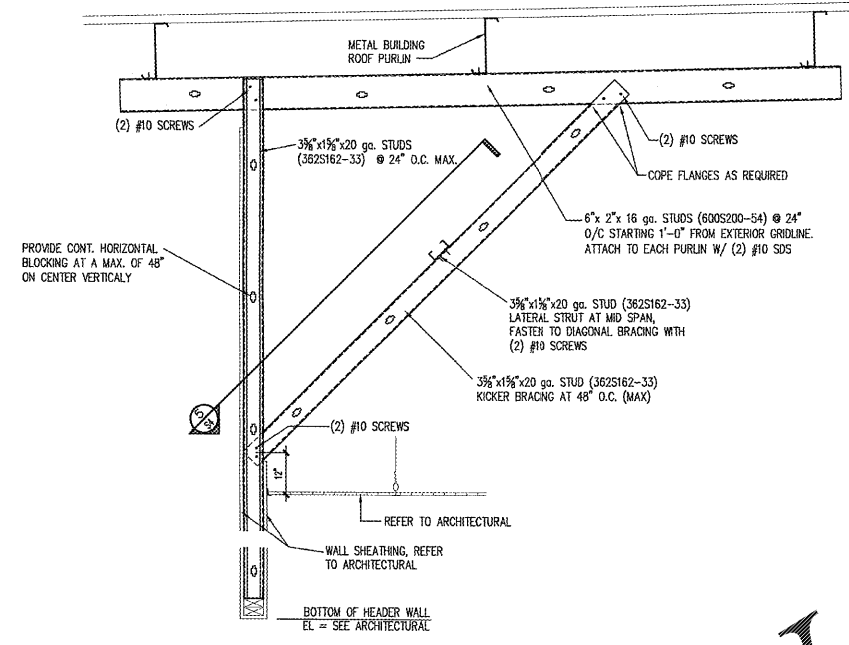


RECEIVED
SEP 11 2018
1736 E. SUNSHINE CT., SUITE 417
SPRINGFIELD, MO



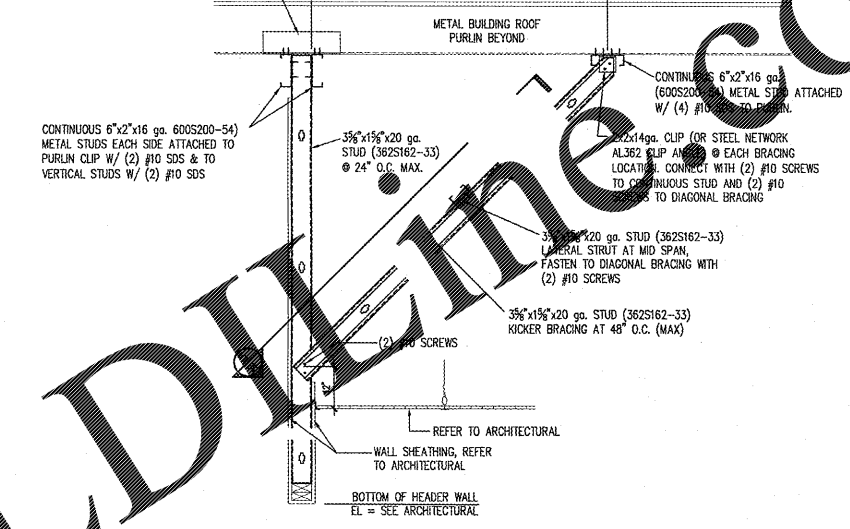
PROVIDE 16ga COLD-FORMED STEEL (CFS) FRAMING AT ENTRY LOCATION. WHERE APPLICABLE ALIGN FRAMING MEMBERS WITH METAL STUDS OVER STOREFRONT (SPACING NOT TO EXCEED 24" O.C.) ALL CFS-TO-CFS CONNECTIONS TO BE A MINIMUM OF (3) #8 SDS. REFER TO ARCHITECTURAL SECTIONS FOR FRAMING PROFILES AND MEMBER DEPTHS.

STRUCTURAL PLAN
SCALE: NONE

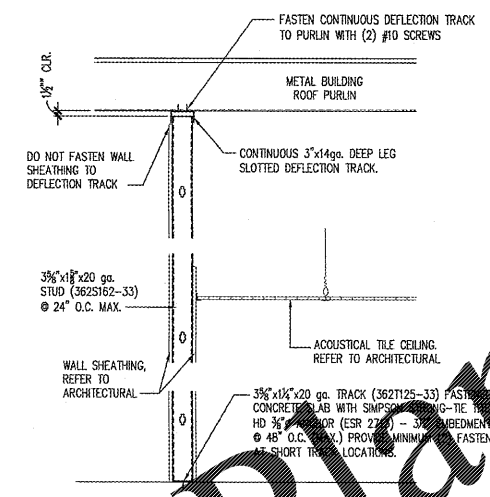


1 SECTION
S4 SCALE: 3/4" = 1'-0"

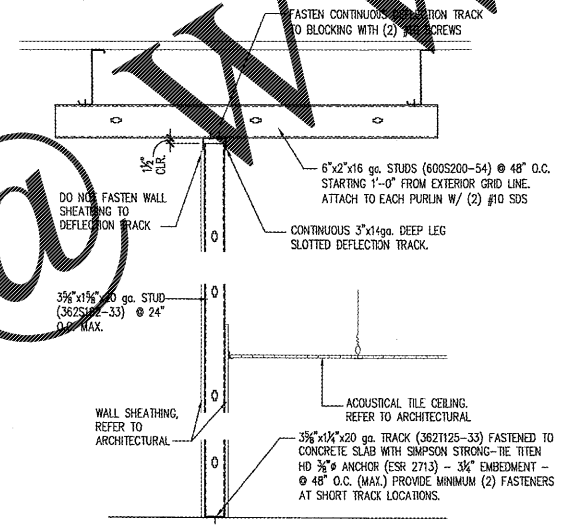
L 4x4x3/8"x1'-0" @ EACH PURLIN. (FURNISHED BY CONTRACTOR UNDER SECTION 05 50 00 OF THE PROJECT MANUAL SPECIFICATIONS). ATTACH ANGLE TO PURLIN WEB W/ (2) 1/2" A307 BOLT.



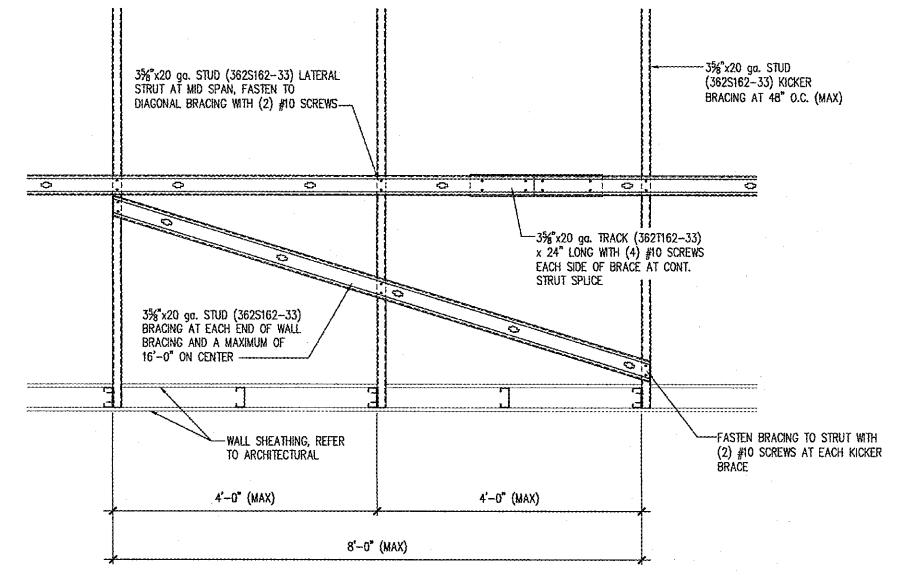
2 SECTION
S4 SCALE: 3/4" = 1'-0"



3 SECTION
S4 SCALE: 3/4" = 1'-0"



4 SECTION
S4 SCALE: 3/4" = 1'-0"



5 SECTION
S4 SCALE: 3/4" = 1'-0"

Order Plans



1736 East Sunshine, Suite 417
Springfield, Missouri 65804
417.862.3265
e-mail: architect@estertyschneider.com

ESTERTY SCHNEIDER & ASSOCIATES, INC.
AIA architects & planners

PROJECT: **NEW O'REILLY AUTO PARTS STORE**
U.S. HWY 64
SOMERVILLE, TN
FRAMING DETAILS

O'Reilly AUTO PARTS
CORPORATE OFFICES
233 SOUTH PATTERSON
SPRINGFIELD, MISSOURI 65802
(417) 862-2674 TELEPHONE

COMM # 4231
DATE: 9-11-18
REVISION DATE:

J.S. Smith Consulting
Aaron D. Smith P.E. 00107183
1801 W 32nd St. Bldg B Ste 104 * JOPLIN, MISSOURI 64804
P.O. Box 8102 * JOPLIN, MISSOURI 64802
PHONE: 417-624-0444 * FAX: 417-624-0430