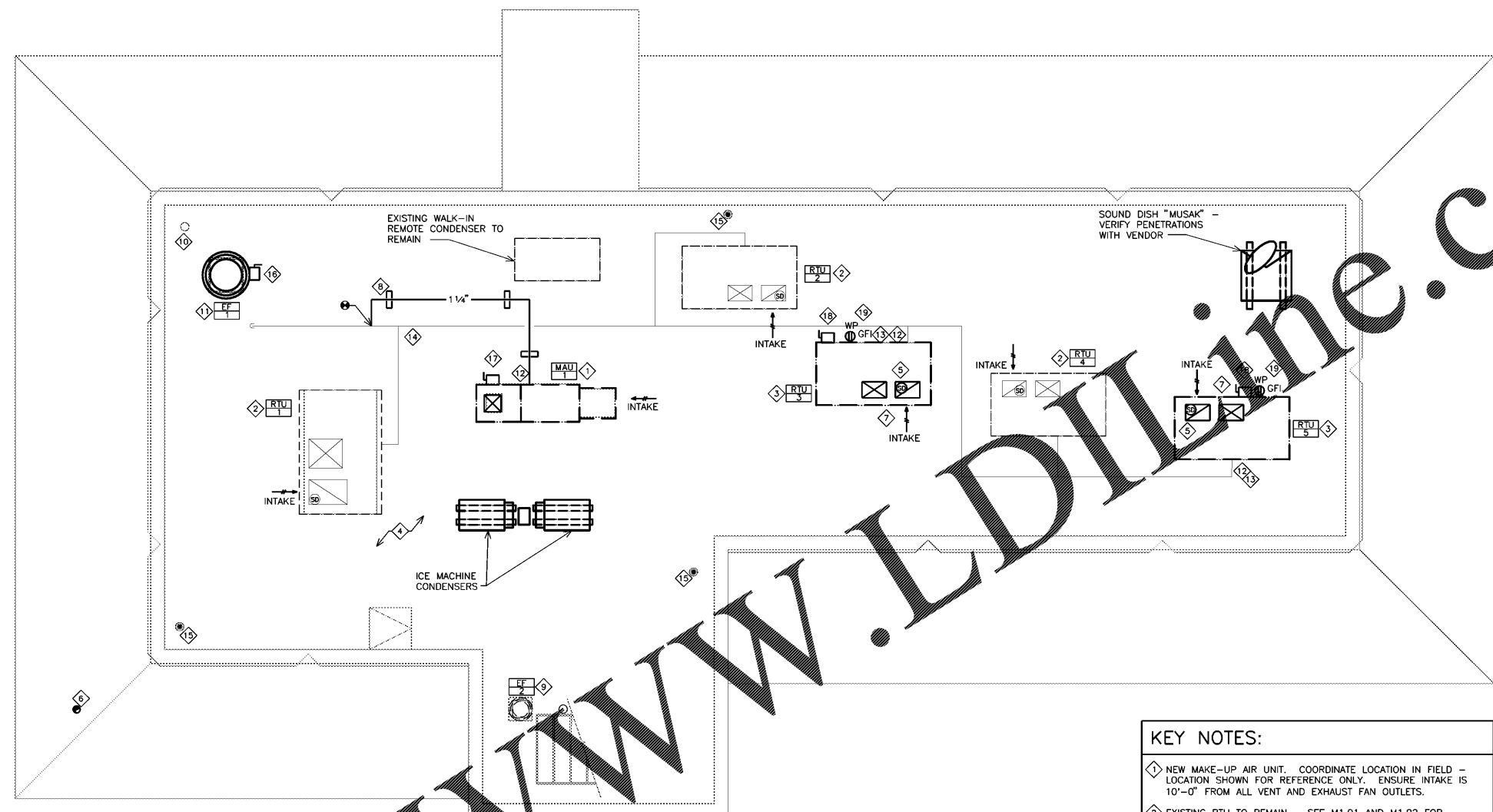


| PLUMBING LINETYPE LEGEND |                        |
|--------------------------|------------------------|
|                          | NEW GREASE WASTE       |
|                          | NEW SANITARY WASTE     |
|                          | NEW STORM              |
|                          | NEW VENT               |
|                          | NEW HVAC CONDENSATE    |
|                          | COLD WATER PIPING (CW) |
|                          | HOT WATER PIPING (HW)  |
|                          | GAS                    |

| MECHANICAL SYMBOL LEGEND |   |
|--------------------------|---|
|                          | SUPPLY AIR  |
|                          | RETURN AIR  |
|                          | EXHAUST AIR   |
|                          | STANDARD BRANCH, NO SPLITTER - SUPPLY FLOW TO RIGHT - RETURN/EXHAUST FLOW TO LEFT |
|                          | BELLMOUTH WITH BALANCING DAMPER   |
|                          | FLEXIBLE DUCT   |
|                          | TURNING VANES   |
|                          | MANUAL VOLUME DAMPER  |
|                          | MOTORIZED DAMPER  |
|                          | FIRE DAMPER & ACCESS PANEL  |
|                          | SUPPLY DUCT UP, POSITIVE PRESSURE   |
|                          | RETURN DUCT UP, NEGATIVE PRESSURE   |
|                          | EXHAUST DUCT UP, NEGATIVE PRESSURE  |
|                          | SUPPLY DUCT DOWN, POSITIVE PRESSURE   |
|                          | RETURN DUCT DOWN, NEGATIVE PRESSURE   |
|                          | EXHAUST DUCT DOWN, NEGATIVE PRESSURE  |
|                          | FLEXIBLE DUCTWORK CONNECTION TO UNIT  |
|                          | SUPPLY DIFFUSER/REGISTER<br>BLANKOFF INDICATED SHADED                             |
|                          | SUPPLY DIFFUSER TYPE - NECK SIZE<br>DIFFUSER AIRFLOW (CFM)                        |
|                          | RETURN GRILLE REGISTER TYPE - NECK SIZE<br>RETURN AIRFLOW (CFM)                   |
|                          | EXHAUST GRILLE REGISTER TYPE - NECK SIZE<br>EXHAUST AIRFLOW (CFM)                 |
|                          | CONCENTRIC DUCT TRANSITION  |
|                          | ECCENTRIC DUCT TRANSITION   |
|                          | SMOKE DETECTOR  |
|                          | THERMOSTAT  |
|                          | EXISTING DUCT TO REMAIN   |
|                          | EXISTING DUCT TO BE REMOVED   |
|                          | POINT OF CONNECTION, NEW TO EXISTING  |
|                          | POINT OF DISCONNECTION  |

| PLUMBING SYMBOL LEGEND |  |
|------------------------|--|
|                        | ELBOW DOWN   |
|                        | WALL CLEANOUT                                      |
|                        | PIPE CAP   |
|                        | ELBOW UP   |
|                        | TEE, OUTLET UP                                     |
|                        | TEE, INLET DOWN                                    |
|                        | CHECK VALVE  |
|                        | SHUTOFF VALVE                                      |
|                        | PRESSURE REDUCING VALVE<br>(SETTING AS NOTED, PSI) |
|                        | BALL VALVE   |
|                        | BUTTERFLY VALVE                                    |
|                        | REDUCED PRESSURE ZONE<br>BACKFLOW PREVENTER        |
|                        | SOLENOID VALVE                                     |
|                        | GAS PRESSURE REGULATOR VALVE                       |
|                        | PIPE UNION   |
|                        | SHOCK ABSORBER                                     |
|                        | ELBOW  |
|                        | FLOOR DRAIN  |
|                        | TRENCH DRAIN                                       |
|                        | FLOOR SINK   |
|                        | WH   |
|                        | HB   |
|                        | FLOOR CLEANOUT                                     |
|                        | GAS COCK VALVE                                     |
|                        | POINT OF CONNECTION, NEW TO EXISTING               |
|                        | POINT OF DISCONNECTION                             |



1 MECHANICAL, PLUMBING AND ELECTRICAL ROOF PLAN  
SCALE: 1/4" = 1'-0"

- KEY NOTES:**
- NEW MAKE-UP AIR UNIT. COORDINATE LOCATION IN FIELD - LOCATION SHOWN FOR REFERENCE ONLY. ENSURE INTAKE IS 10'-0" FROM ALL VENT AND EXHAUST FAN OUTLETS.
  - EXISTING RTU TO REMAIN - SEE M1.01 AND M1.02 FOR ADDITIONAL REQUIREMENTS.
  - NEW RTU TO REPLACE EXISTING - SEE M1.01 AND M1.02 FOR ADDITIONAL REQUIREMENTS.
  - REMOVE EXISTING UNUSED EQUIPMENT - REFER TO ARCHITECTURAL SHEETS FOR ADDITIONAL INFORMATION.
  - SMOKE DETECTORS FOR AUTOMATIC FAN SHUTDOWN MOUNTED IN RETURN AIR DUCT (AND/OR SUPPLY AIR DUCT WHERE REQUIRED) TO BE FURNISHED & INSTALLED BY M.C. - WIRING & CONNECTIONS BY E.C.
  - WATER HEATER CONCENTRIC VENT UP THROUGH ROOF. VERIFY ROUTING IN FIELD - MAINTAIN MIN. 10'-0" FROM ALL FRESH AIR INTAKES. INSTALL PER MANUFACTURERS RECOMMENDATIONS. SEE DETAIL ON P1.02.
  - ROUTE 1" CONDENSATE PIPE W/ MIN. 3" DEEP P-TRAP TO SPLASH BLOCK ON ROOF. PROVIDE ALL FITTINGS PER LOCAL CODES AND LANDLORD REQUIREMENTS.
  - 4"x4"x6" REDWOOD PIPE SUPPORTS, 8'-0" O.C., PIPE LOOSELY SECURED TO BLOCK PLACE DOUBLE LAYER ROOFING UNDER BLOCKS (TYPICAL)
  - EXISTING EXHAUST FAN TO REMAIN - SEE SCHEDULE FOR REFURBISHING REQUIREMENTS.
  - EXISTING VTR - VERIFY LOCATION IN FIELD.
  - GREASE EXHAUST FAN - MAINTAIN MIN. DISTANCE OF 10'-0" FROM ALL FRESH AIR INTAKES.
  - PROVIDE SHUT-OFF VALVE, DIRT LEG AND UNION. PROVIDE PRESSURE REGULATOR IF NECESSARY PER CONDITIONS, AND MANUFACTURER REQUIREMENTS.
  - EXTEND EXISTING GAS PIPING AND MAKE CONNECTION TO NEW RTU.
  - EXISTING GAS PIPING ON ROOF TO REMAIN.
  - EXISTING ROOF DRAIN TO REMAIN. PROVIDE NEW STRAINER AS REQUIRED.
  - DISCONNECT ON ROOF FOR EXHAUST FAN. CIRCUIT EXHAUST FAN "THROUGH" STARTER IN EXHAUST HOOD CONTROL SYSTEM INTERLOCK BOX, FURNISHED BY EXHAUST HOOD SUPPLIER. SEE APPROVED HOOD DRAWINGS, SHEET E2.02, AND E3.02 FOR ADDITIONAL INFORMATION.
  - DISCONNECT ON ROOF FOR MAKE UP AIR UNIT. CIRCUIT MAKE UP AIR UNIT "THROUGH" STARTER IN EXHAUST HOOD CONTROL SYSTEM INTERLOCK BOX, FURNISHED BY EXHAUST HOOD SUPPLIER. SEE APPROVED HOOD DRAWINGS, SHEET E2.02, AND E3.02 FOR ADDITIONAL INFORMATION.
  - DISCONNECT ON ROOF FOR RTU CONNECTION. SEE DETAIL 2/E3.01 FOR ADDITIONAL INFORMATION.
  - PROVIDE 120V, 1P/20 AMP GFI RECEPTACLE IN WEATHER PROOF ENCLOSURE FOR EQUIPMENT MAINTENANCE. SEE DETAIL 02 ON DRAWING SHEET E3.01.

- GENERAL NOTES:**
- ALL CONTRACTORS SHALL COORDINATE THEIR RESPECTIVE SCOPES OF WORK WITH OTHER TRADES FOR THE COMPLETION OF THE PROJECT.
  - PROVIDE PIPE SUPPORTS FOR ROOF MOUNTED GAS PIPING. SUPPORTS SHALL BE INSTALLED AT 8'-0" O.C. AND AT EVERY CHANGE OF DIRECTION.
  - THE INSTALLATION OF THE PLUMBING SYSTEMS SHALL BE COORDINATED WITH ALL ELECTRICAL AND MECHANICAL EQUIPMENT, AND STRUCTURAL SLAB AND FRAMING.
  - REFER TO PLUMBING SHEET P1.01 FOR PLUMBING FIXTURE AND EQUIPMENT SCHEDULES INCLUDING SPECIFICATIONS AND ROUGH-IN SIZES.
  - EXTERIOR CONDENSATE PIPING SHALL BE PVC.
  - ALL EXHAUST FAN AND PLUMBING VENT TERMINATIONS SHALL BE A MINIMUM OF 10'-0" HORIZONTAL FROM ALL OUTDOOR AIR INTAKES OF MECHANICAL EQUIPMENT.
  - THE PLUMBING CONTRACTOR SHALL FIELD PAINT THE ROOF MOUNTED GAS PIPING WITH ZINC RICH GALVANIZING PAINT FOR CORROSION PROTECTION.

PRIOR TO BID, THE CONTRACTOR SHALL REVIEW THE MECHANICAL, ELECTRICAL AND KITCHEN EQUIPMENT DRAWINGS. THE CONTRACTOR SHALL INCLUDE IN THEIR BID ALL RELEVANT WORK IN THE ENTIRE SET OF DOCUMENTS AND REPORT ALL DISCREPANCIES BETWEEN THESE DRAWINGS TO THE ENGINEER PRIOR TO BIDDING FOR CLARIFICATION. IF DISCREPANCIES REMAIN UNRESOLVED DUE TO A SHORT TIME FRAME, THE CONTRACTOR SHALL INCLUDE THE MOST WORK AND THE HIGHER COSTS IN THE BID. SOLUTIONS TO UNREPORTED DISCREPANCIES WILL BE DETERMINED BY THE ARCHITECT/ENGINEER, WITH NO ADDITIONAL COMPENSATION DUE TO THE CONTRACTOR.

CONSULTANT:  
**DUNHAM**  
50 South Sixth Street / Suite 1100  
Minneapolis, MN 55402-1100  
PHONE: 612.486.6500  
FAX: 612.486.7551  
WEB: [dunhaminc.com](http://dunhaminc.com)  
Mechanical, Electrical  
Consulting Engineering

CLIENT:  
**SONIC**  
American Drive-In®  
JOHN COVE, LLC.  
7790 ABBEY OAKS COURT  
MANASSAS, VA 20112

PROJECT INFORMATION:  
**SONIC**  
SONIC DRIVE-IN RESTAURANT  
10850 PROMENADE LANE  
MANASSAS, VA 20109  
STORE #6711

PROJECT NO.: 0419739-002  
DRAWN BY: TAB  
CHECKED BY: GS

ISSUE: \_\_\_\_\_ DATE: \_\_\_\_\_  
PERMIT SET: \_\_\_\_\_ 07-27-18

REVISION: \_\_\_\_\_ DATE: \_\_\_\_\_

PROJECT LOCATION:  
MANASSAS, VA  
#6711

SHEET NUMBER / TITLE:  
**MEP1.01**  
ROOF PLAN