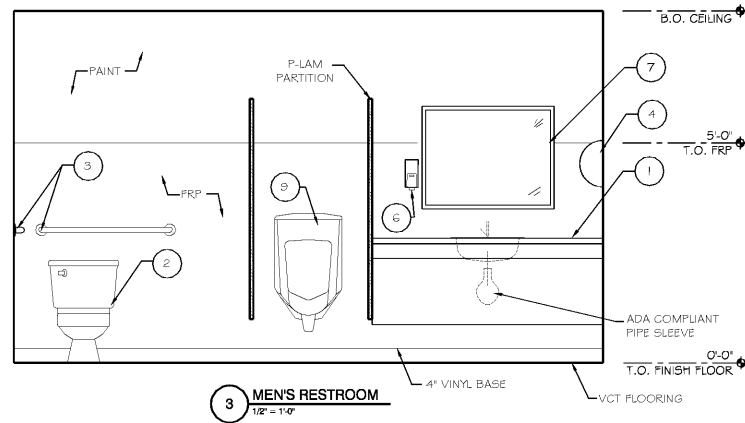
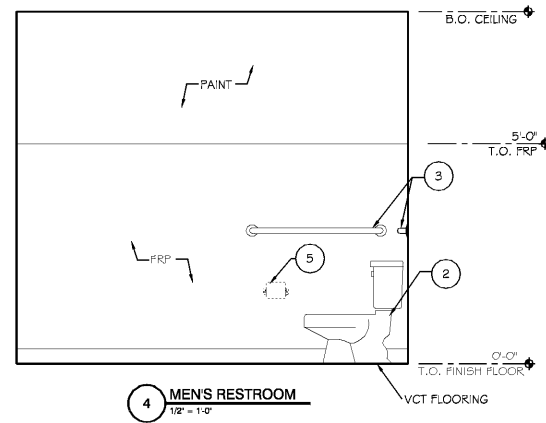


2 MENS RESTROOM
1/2" = 1'-0"



3 MENS RESTROOM
1/2" = 1'-0"



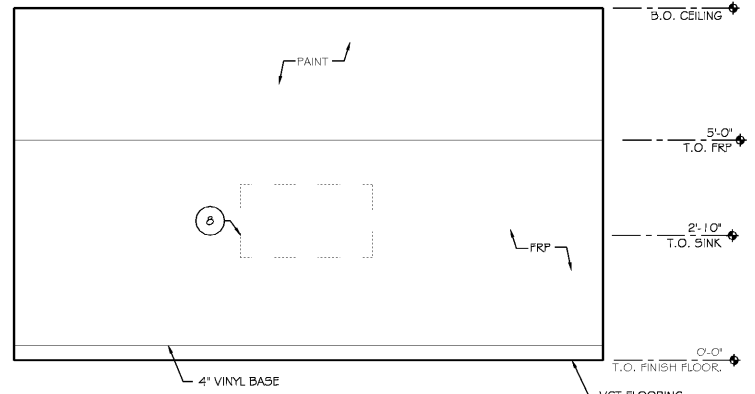
4 MENS RESTROOM
1/2" = 1'-0"

FIXTURE MOUNTING HEIGHT SCHEDULE

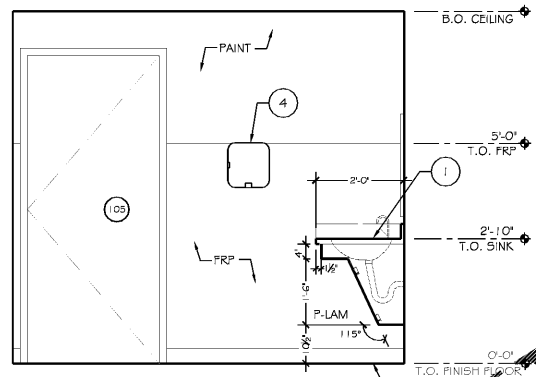
- LAVATORIES (MEASURES FROM FLOOR TO RIM)
A. ADULTS = 32"
HANDICAPPED = 34" MAX. (29" MIN. KNEESPACE)
- WATER CLOSETS (MEASURED FROM FLOOR TO TOP OF SEAT)
FLOOR MOUNTED WITH FLUSH VALVE OR FLUSH ASSIST WITH TANK, BLADDER, AND FIXTURES (SINKS, FAUCETS ETC.) TO BE COMMERCIAL GRADE.
A. ADULTS = 15"
HANDICAPPED = 16" TO 18"
- HANDICAPPED GRAB BARS (MEASURE FROM FLOOR TO CENTERLINE OF BAR)
A. ADULTS = 34 TO 36"
- ELECTRIC HAND DRYER (MEASURE FROM FLOOR TO TOWEL NOZZLE)
A. ADULTS = 34 TO 36"
- TOILET TISSUE DISPENSER (MEASURE FROM FLOOR TO CENTERLINE OF ROLL)
A. ADULTS = 20"
- SOAP DISPENSER (MEASURE FROM FLOOR TO CENTERLINE OF SPIN)
A. ADULTS = 30"
HANDICAPPED = 35"
- MIRRORS (MEASURE FROM FLOOR TO BOTTOM OF REFLECTING SURFACE)
A. ADULTS = 40"
- BABY CHANGING STATION (MEASURE FROM FLOOR TO BOTTOM OF WORKING SURFACE)
A. ADULTS = 34" MAX. (29" MIN. KNEESPACE)
HORIZONTAL WALL MOUNTED KB200 - COLOR GREY
- TOILET TISSUE MEASURE FROM FLOOR TO BOTTOM OF REFLECTING SURFACE)
A. ADULTS = 20"

NOTES

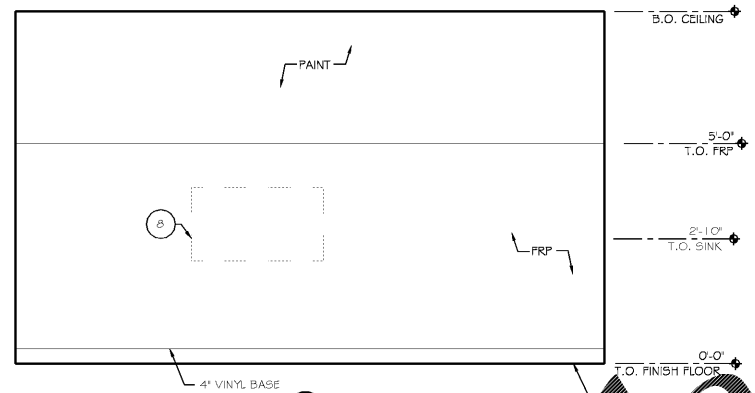
- REFER ACCESSIBILITY DETAILS SHEET A-201 FOR ACCESSORIES MOUNTING HEIGHTS.



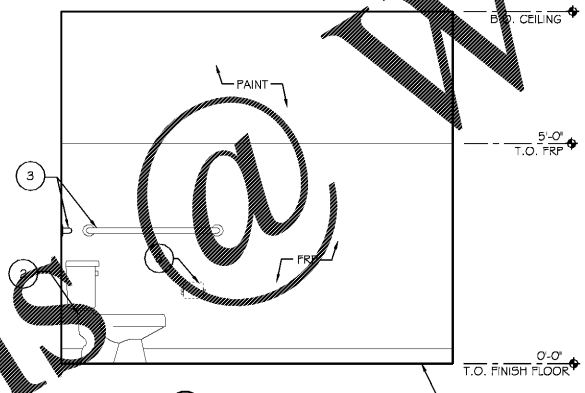
5 MENS RESTROOM
1/2" = 1'-0"



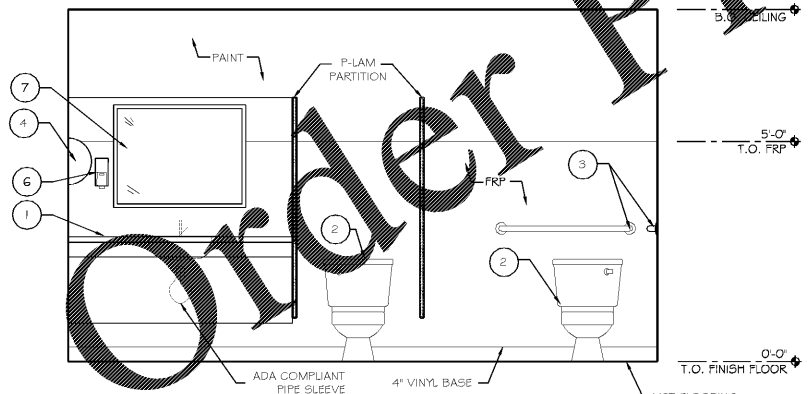
6 WOMENS RESTROOM
1/2" = 1'-0"



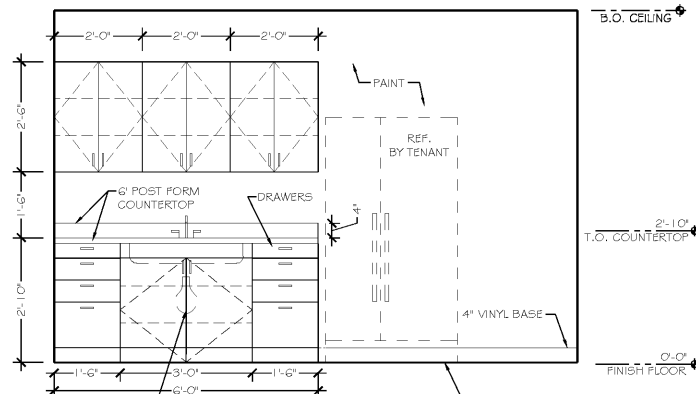
7 WOMENS RESTROOM
1/2" = 1'-0"



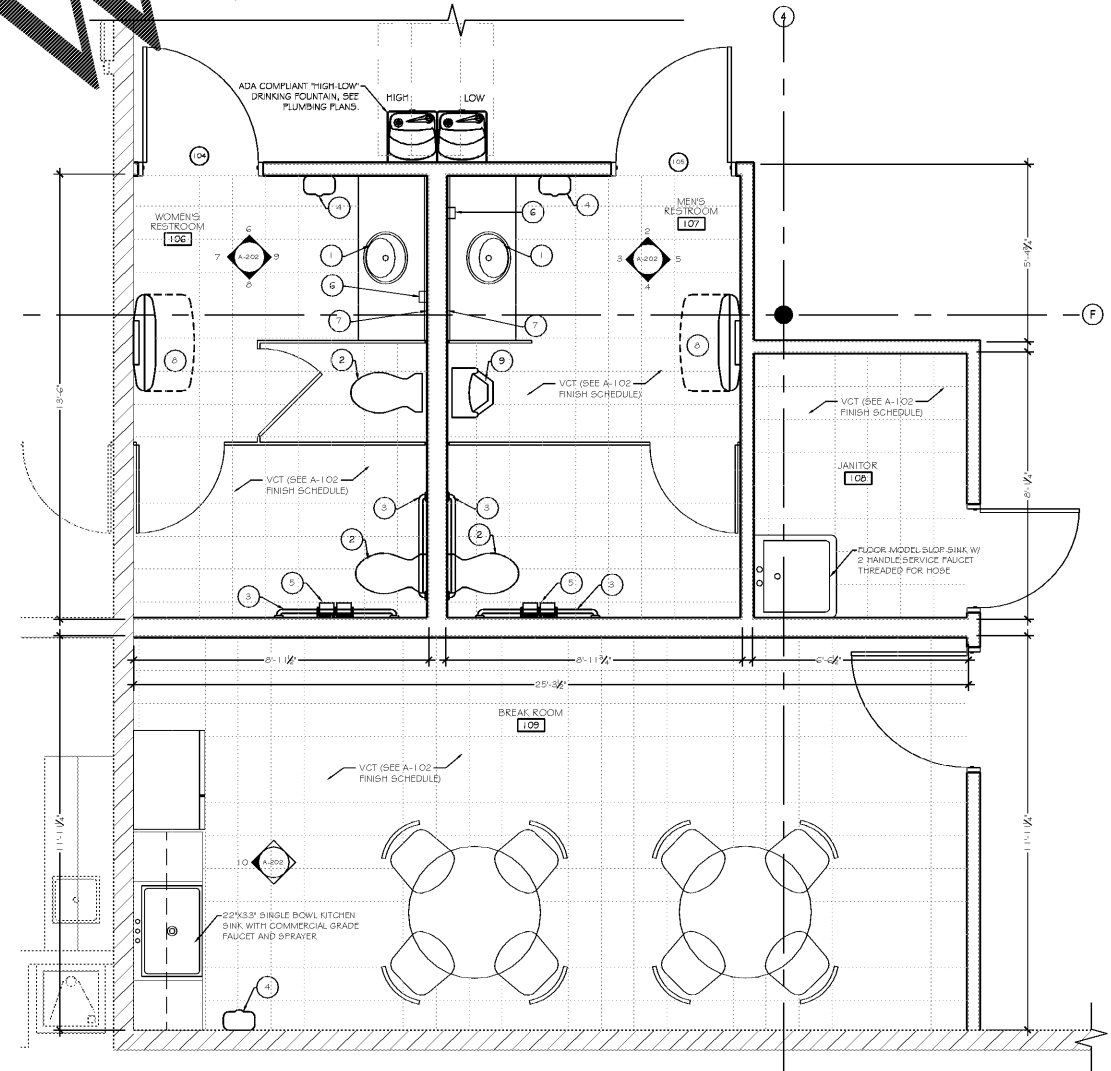
8 WOMENS RESTROOM
1/2" = 1'-0"



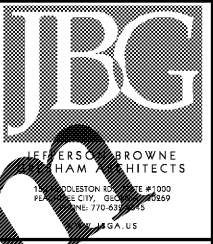
9 WOMENS RESTROOM
1/2" = 1'-0"



10 BREAK ROOM
1/2" = 1'-0"



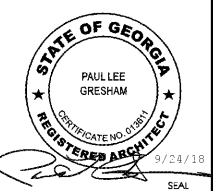
1 ACCESSIBILITY PLAN
1/2" = 1'-0"



REVISIONS

NO.	DESCRIPTION

OLLIE'S BARGAIN OUTLET
SPALDING VILLAGE
1424 NORTH EXPRESSWAY, SUITE 146, 147A
GRIFFIN, GEORGIA 30203



SEPTEMBER 24, 2018
PERMIT DOCUMENTS
RELEASED FOR CONSTRUCTION
RELEASE DATE

ADA ENLARGED RESTROOMS

DRAWING TITLE
© COPYRIGHT 2018 JEFFERSON BROWNE GRESHAM ARCHITECTS INC. THIS DOCUMENT AS AN INSTRUMENT OF SERVICE REMAINS THE PROPERTY OF JEFFERSON BROWNE ARCHITECTS AND NO PART THEREOF MAY BE REPRODUCED IN ANY FORM WITHOUT WRITTEN PERMISSION FROM JEFFERSON BROWNE ARCHITECTS.

Checked By: **A-202**
PROJECT # 18-2671 SHEET 07 OF 15