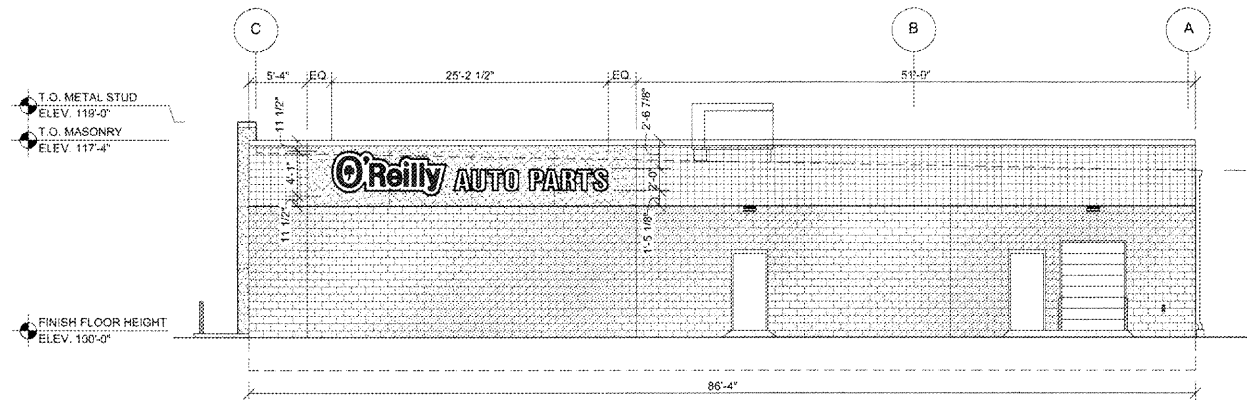


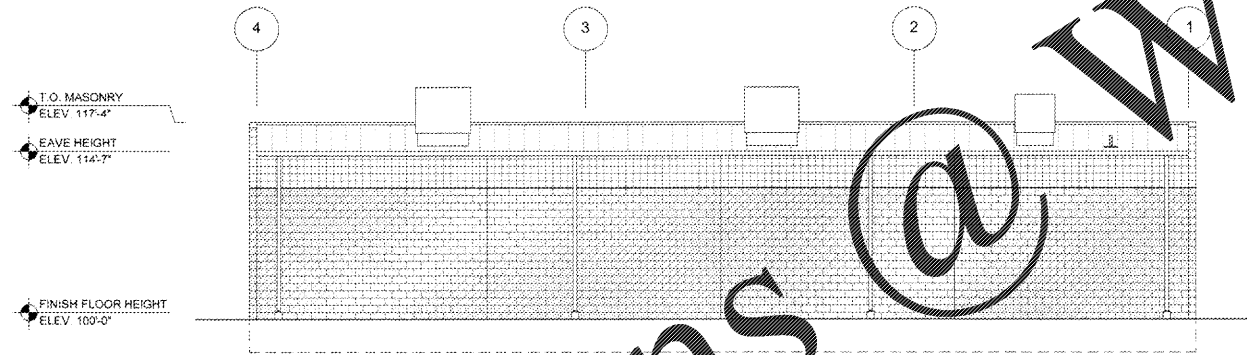
**1 FRONT EXTERIOR ELEVATION**

SG2.1 SCALE: 1/8" = 1'-0"



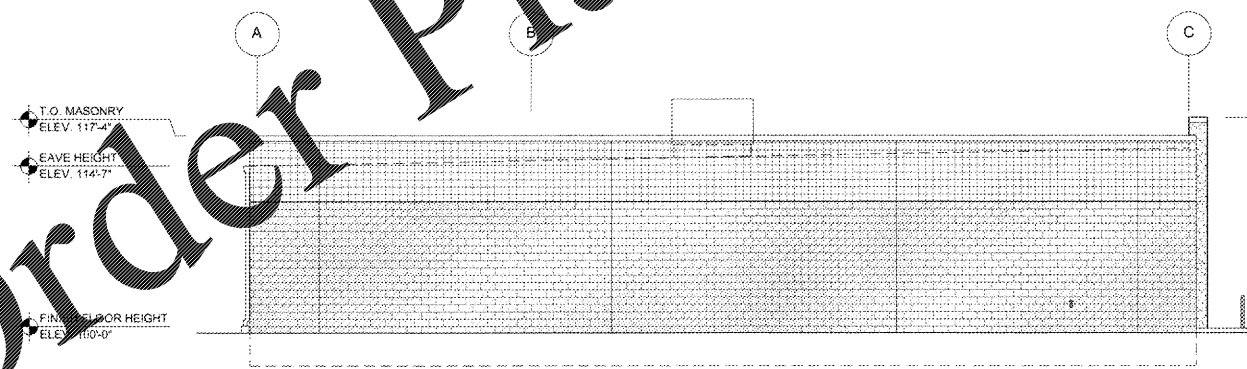
**2 RIGHT EXTERIOR ELEVATION**

SG2.1 SCALE: 1/8" = 1'-0"



**3 REAR EXTERIOR ELEVATION**

SG2.1 SCALE: 1/8" = 1'-0"



**4 LEFT EXTERIOR ELEVATION**

SG2.1 SCALE: 1/8" = 1'-0"

**BUILDING SIGN SCHEDULE**

- FRONT EXTERIOR ELEVATION  
TYPE: OR 63" x 31" AP LINEAR  
DETAIL: REFER TO 5/SG2.1 AND 6/SG2.1
- RIGHT EXTERIOR ELEVATION  
TYPE: OR 49" x 24" AP LINEAR  
DETAIL: REFER TO 7/SG2.1 AND 8/SG2.1
- REAR EXTERIOR ELEVATION  
TYPE: NO SIGN  
DETAIL:
- LEFT EXTERIOR ELEVATION  
TYPE: NO SIGN  
DETAIL:

**GENERAL NOTES**

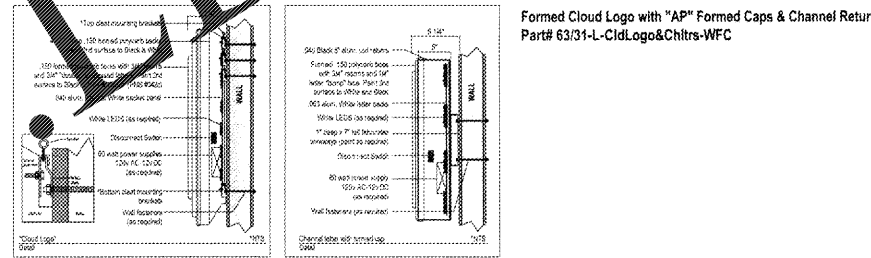
- (A) CONTACT OWNER'S OR TENANT'S DESIGNATED PROJECT ADMINISTRATOR FOR QUESTIONS OR CLARIFICATIONS.
- (B) BUILDING PERMANENT SIGNAGE OWNER FURNISHED AND INSTALLED. (REFER TO SCOPE OF WORK SCHEDULE). SIGNAGE GRAPHICS PROVIDED FOR REFERENCE ONLY (N.T.C.) AND CONTRACTOR'S COORDINATION WITH SPECIFIC PROJECT AND CONSTRUCTION CONDITIONS. CONTRACTOR TO PROVIDE BACKING AND ROUGH-IN ELECTRICAL AS REQUIRED FOR INSTALLATION. REFER TO A2.1 FOR EXTERIOR BUILDING FINISH.
- (C) REQUIRED GOVERNMENTAL PERMITS FOR PERMANENT TYPE SIGNAGE TO BE PROVIDED BY OWNER OR OTHER (N.T.C.).



**5 FRONT WALL SIGN ELEVATION**

SG2.1 SCALE: 1/4" = 1'-0"

Part# 63/314-Cld.Logo&Chtrs-WFC  
113.05 sq. ft. (Combined Individual Components) 198.42 (Encapsulated Rectangle)  
"O'Reilly" Cloud Logo with "AP" channel letters on 7" (H) x 1" (D) wireways. Wireways paint to OAP RED.  
"O'Reilly" Cloud Logo with "AP" embossed with 2nd surface painted graphics. Paint match to Green (PMS# 342c), Black and White.  
"AP" to have formed polycarb caps with 1/4" letter "bumps", Black 5" aluminum coil returns. 2nd surface Black and White paint. WHITE LED Illumination.



O'Reilly Auto Parts  
233 Patterson St.  
Springfield, MO 65803

**6 FRONT WALL SIGN MOUNTING DETAILS**

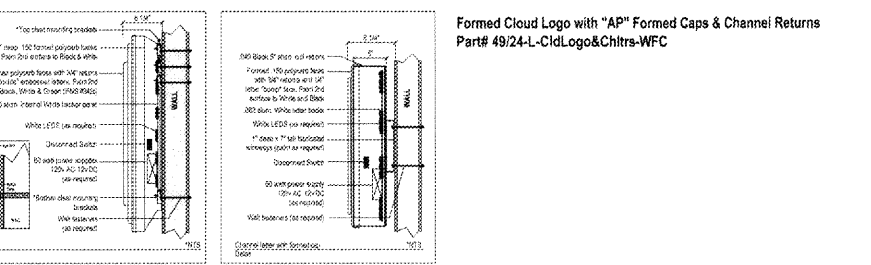
SG2.1 SCALE: 1/4" = 1'-0"



Part# 49/24-L-Cld.Logo&Chtrs-WFC  
89.29 sq. ft. (Combined Individual Components) 102.93 (Encapsulated Rectangle)  
"O'Reilly" Cloud Logo with "AP" channel letters on 7" (H) x 1" (D) wireways. Wireways paint to OAP RED.  
"O'Reilly" Cloud Logo is formed polycarb with 2nd surface painted graphics. Paint match to Green (PMS# 342c), Black and White.  
"AP" to have formed polycarb caps with 1/4" letter "bumps", Black 5" aluminum coil returns. 2nd surface Black and White paint. WHITE LED Illumination.

**7 FRONT WALL SIGN ELEVATION**

SG2.1 SCALE: 1/4" = 1'-0"



**8 FRONT WALL SIGN MOUNTING DETAILS**

SG2.1 SCALE: 1/4" = 1'-0"

DESIGN BY OTHERS FOR REFERENCE ONLY

PROJECT: NEW O'REILLY AUTO PARTS STORE  
NC STATE HWY 211  
SEVEN LAKES, NC  
BUILDING EXTERIOR SIGNAGE

PROJECT: NEW O'REILLY AUTO PARTS STORE  
NC STATE HWY 211  
SEVEN LAKES, NC  
BUILDING EXTERIOR SIGNAGE

O'Reilly AUTO PARTS  
CORPORATE OFFICES  
233 PATTERSON ST.  
SPRINGFIELD, MISSOURI 65802  
(417) 862-2674 TELEPHONE

CONN # 4155  
DATE: 3-23-18  
REVISION  
DATE:

SG2.1