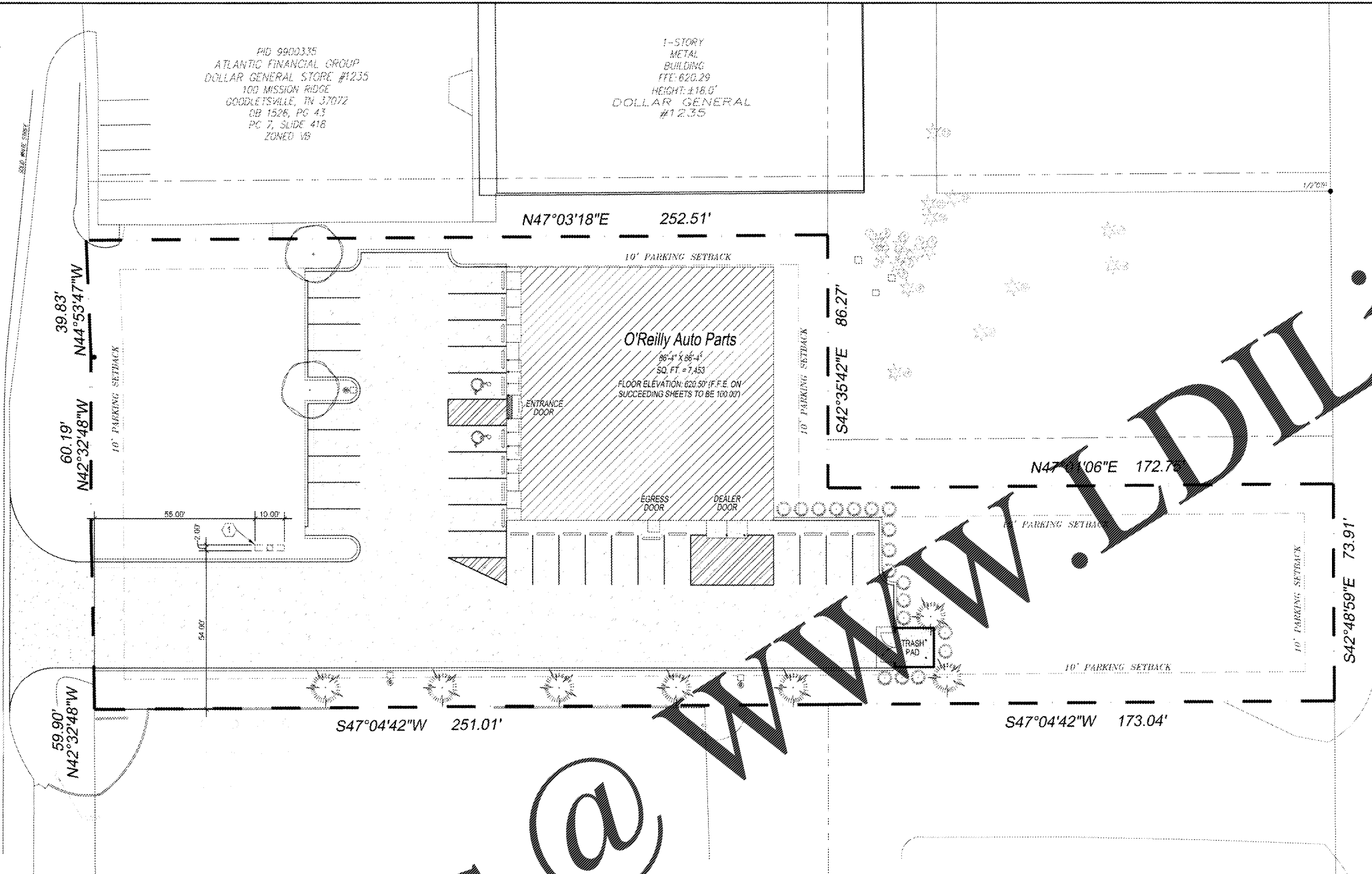


Order Plans @

WWW.LDILLING.COM

1 SITE SIGNAGE PLAN

SG1.1 SCALE: 1" = 20'-0"

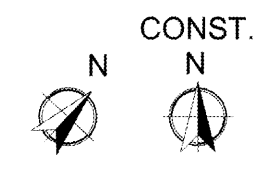


GENERAL NOTES

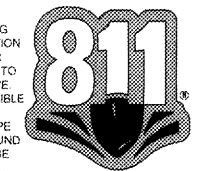
- (A) REFER TO PROJECT MANUAL AND SCOPE OF WORK SCHEDULE FOR ADDITIONAL REQUIREMENTS.
 - (B) SITE DIMENSIONS TO FACE OF CONCRETE FOUNDATION, SIDEWALK CURB GUTTER LINE, PROPERTY LINE, OR CENTER LINE OF STREET UNLESS OTHERWISE NOTED.
 - (C) COORDINATE WORK WITH OTHER SITE RELATED REQUIREMENT DRAWINGS.
 - (D) PRIOR TO INSTALLATION, CONTRACTOR TO VERIFY LOCATIONS OF LIGHT POLES, LANDSCAPING, AND UTILITIES TO NOT CONFLICT WITH SITE SIGN LOCATION SHOWN. REFER TO ELECTRICAL AND CIVIL FOR UTILITY LOCATIONS. IF CONFLICT IS DISCOVERED, CONTRACTOR TO NOTIFY OWNER'S REPRESENTATIVE PRIOR TO PROCEEDING WITH THE WORK.
 - (E) *COMING SOON* TEMPORARY CONSTRUCTION SIGN TO BE PROVIDED BY CONTRACTOR. APPLIED SIGNAGE GRAPHICS TO BE OWNER'S FURNISHED AND CONTRACTOR INSTALLED. LOCATE TEMPORARY CONSTRUCTION SIGN ON SITE SO AS TO BE VISIBLE TO PUBLIC FROM RIGHT-OF-WAY. REFER TO DETAIL 1/SG1.2.
- SPECIAL NOTE:**
AVOID OBSCURING VISIBILITY OF SITE SIGN FROM RIGHT OF WAY WITH LARGE PLANTINGS AND LANDSCAPING. SUBMIT LANDSCAPING LAYOUT FOR FINAL OWNER REVIEW AND APPROVAL PRIOR TO INSTALLATION.

KEY NOTES

- (1) SITE SIGN, REFER TO ELEVATION 2/SG1.2



CAUTION:
INFORMATION ON THIS DRAWING CONCERNING TYPE AND LOCATION OF UNDERGROUND AND OTHER UTILITIES IS NOT GUARANTEED TO BE ACCURATE OR ALL INCLUSIVE. THE CONTRACTOR IS RESPONSIBLE FOR MAKING HIS OWN DETERMINATION AS TO THE TYPE AND LOCATION OF UNDERGROUND AND OTHER UTILITIES AS MAY BE NECESSARY TO AVOID DAMAGE THERETO.



Know what's below
Call before you dig.

DESIGN BY OTHERS FOR REFERENCE ONLY
CRAIG A. SCHNEIDER, AIA
 ARCHITECT
 1736 EARL SHARBIRE, SUITE 417
 SPRINGFIELD, MISSOURI 65804
 417.842.8528
 FAX: 417.842.8266
 e-mail: architect@estrefsbarelect.com

PROJECT:
NEW O'REILLY AUTO PARTS STORE
 NC STATE HWY 211
 SEVEN LAKES, NC
SITE SIGNAGE PLAN

O'Reilly AUTO PARTS
 CORPORATE OFFICES
 233 SOUTH PATTERSON
 SPRINGFIELD, MISSOURI 65802
 (417) 862-2674 TELEPHONE

COMM #	4155
DATE	3-23-18
REVISION	
DATE	

SG1.1