

RECEIVED
AUG 08 2008
TYLER SUNSHINE ST. SUITE 417
SPRINGFIELD, MO

ALL PANELBOARDS, TRANSFORMERS, TRANSFER SWITCH KIT AND DISCONNECTS WILL BE SUPPLIED BY THE OWNER (O'REILLY). ELECTRICAL GEAR SHALL BE DIRECT ORDERED AND/OR RELEASED FROM THE LISTED ELECTRICAL EQUIPMENT DISTRIBUTOR. SEE 'ELECTRIC SERVICE RESPONSIBILITIES' FOR ADDITIONAL CLARIFICATION.

GRAYBAR ELECTRIC CO., INC.
11885 LACKLAND ROAD
ST. LOUIS, MO. 63146
GRAYBAR O'REILLY TEAM
EMAIL: oreilly@graybar.com
TOLL FREE: (314) 573-2080

PANELBOARD SCHEDULE - MP. Table with columns: MP, MAINS, VOLTAGE, ACCESSORIES, TYPE, PHASE, WIDTH, MOUNTING, SURFACE, SPACE(S), WIRE, LOAD DESCRIPTION, WIRE, CKT BRK, CKT. Includes items like LIGHTING, SITE LIGHTING, LED SIGN BLDG, etc.

PANELBOARD SCHEDULE - PLP. Table with columns: PLP, MAINS, VOLTAGE, ACCESSORIES, TYPE, PHASE, WIDTH, MOUNTING, SURFACE, SPACE(S), WIRE, LOAD DESCRIPTION, WIRE, CKT BRK, CKT. Includes items like LATHE, CUTOFF SAW, CRIMPER, RECEPTACLES, STARTER/VOLT TESTER, etc.

PANELBOARD SCHEDULE - MDP. Table with columns: AMP'S, VOLTAGE, TYPE, MOUNTING, SURFACE, SPACE(S), WIRE, LOAD DESCRIPTION, WIRE, CKT BRK, CKT. Includes items like BUILDING LIGHTING, SITE LIGHTING, etc.

NOTE: ALL BRANCH CIRCUITS SHALL HAVE AN EQUIPMENT GROUNDING CONDUCTOR ROUTED WITH THE CIRCUIT CONDUCTORS. THIS MEANS ALL CONDUITS MUST HAVE A GREEN WIRE INSTALLED IN THEM AND SIZED IN ACCORDANCE WITH TABLE 250.122 OF THE N.E.C.

WIRING & LABELING OF EXIT & EMERGENCY LIGHT CIRCUITS. 1. SEE DETAIL 1/E1 FOR WIRING OF EXIT & EMERGENCY LIGHTS ON THESE CIRCUITS. 2. ALL EXIT & EMERGENCY LIGHTING CIRCUITS SHALL BE LABELED BY THE CONTRACTOR ON THE 'PANEL DIRECTORY'.

OPTIONAL STANDBY SOURCE LABEL. PERMANENT LABEL SHALL BE 2 x 3 IN. MIN. AND SHALL BE BLUE LETTERING ON A CONTRASTING BACKGROUND. LABEL TO BE PLACED ON DISCONNECT DOOR.

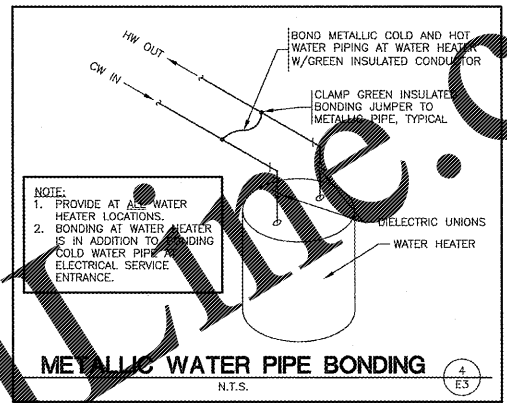
EQUIPMENT LABELS CHART. Table with columns: EQUIPMENT, SERVICE DISCONNECT, OPTIONAL STANDBY SOURCE, SERIES RATING, GENERATOR POWER INLET, AVAILABLE TO CLIENT. Includes items like MDP, MP, PLP, E, GENERATOR POWER INLET, CT CABINET.

TRANSFER SWITCH SCHEDULE. Table with columns: POSITION, CIRCUIT BREAKER, LOAD DESCRIPTION, (KVA), BREAKER. Includes items like OFFICE COMPUTER, COUNTER RECEPTACLES, PRINTER, etc.

GENERATOR POWER INLET LABEL. PERMANENT LABEL SHALL BE 2 x 3 IN. MIN. AND SHALL BE BLUE LETTERING ON A CONTRASTING BACKGROUND. LABEL TO BE PLACED ON DISCONNECT DOOR.

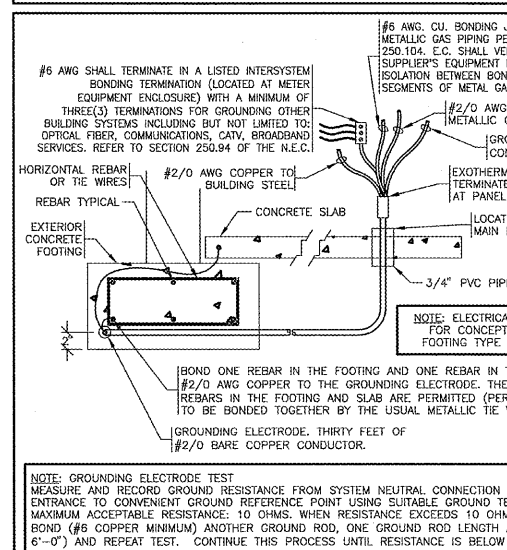
SERVICE DISCONNECT LABEL. THE SERVICE DISCONNECTING MEANS SHALL BE PROPERLY MARKED "SERVICE DISCONNECT", REFER TO SPEC SECTION 26_00_20 FOR FURTHER IDENTIFICATION PLATE REQUIREMENTS.

SERIES RATING LABELS REQUIRED. WHERE CIRCUIT BREAKERS OR FUSES ARE APPLIED IN COMPLIANCE WITH SERIES COMBINATION RATINGS MARKED ON THE EQUIPMENT BY THE MANUFACTURER...

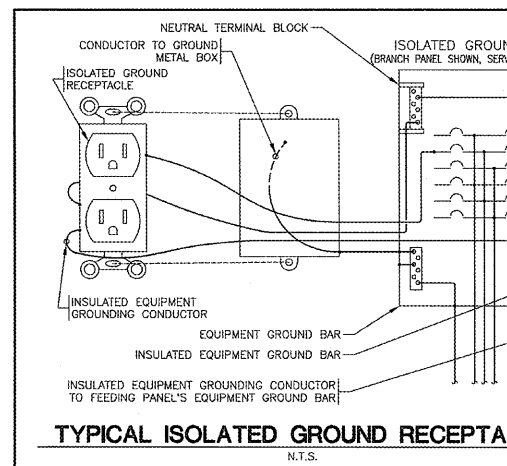


NOTE: 1. PROVIDE AT ALL WATER HEATER LOCATIONS. 2. BONDING AT WATER HEATER IS IN ADDITION TO BONDING COLD WATER PIPE ELECTRICAL SERVICE ENTRANCE.

SERVICE EQUIPMENT GROUNDING & BONDING SHALL BE IN ACCORDANCE WITH: NEC 250-24, NEC 250-28, NEC 250-53, NEC 250-56, NEC 250-90, NEC 250-92, NEC 250-130.



NOTE: GROUNDING ELECTRODE TEST. MEASURE AND RECORD GROUND RESISTANCE FROM SYSTEM NEUTRAL CONNECTION AT SERVICE ENTRANCE TO CONVENIENT GROUND REFERENCE POINT USING SUITABLE GROUND TESTING EQUIPMENT. MAXIMUM ACCEPTABLE RESISTANCE: 10 OHMS. WHEN RESISTANCE EXCEEDS 10 OHMS; DRIVE AND BOND (#6 COPPER MINIMUM) ANOTHER GROUND ROD, ONE GROUND ROD LENGTH AWAY (MINIMUM 6'-0\") AND REPEAT TEST. CONTINUE THIS PROCESS UNTIL RESISTANCE IS BELOW 10 OHMS.



Graybar Electric Co., Inc.
11885 Lackland Road
St. Louis, MO 63146
Graybar O'Reilly Team
Email: oreilly@graybar.com
Toll Free: (314) 573-2080



CRAIG A. SCHNEIDER, AIA
ARCHITECT
1736 East Sunshine, Suite 417
Springfield, Missouri 65804
Tel: 417-862-6558
Fax: 417-862-3265
e-mail: architect@esterlycheider.com

PROJECT:
NEW O'REILLY AUTO PARTS STORE
NC STATE HWY 211
SEVEN LAKES, NC
ELECTRICAL DETAILS

O'Reilly AUTO PARTS
CORPORATE OFFICES
233 SOUTH PATTERSON
SPRINGFIELD, MISSOURI 65802
(417) 862-2674 TELEPHONE

COMM # 4155
DATE: 3-23-18
REVISION DATE: 8-8-18