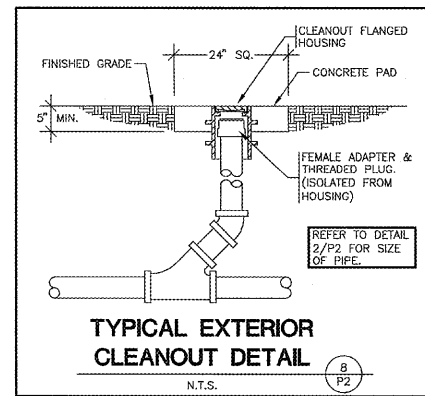
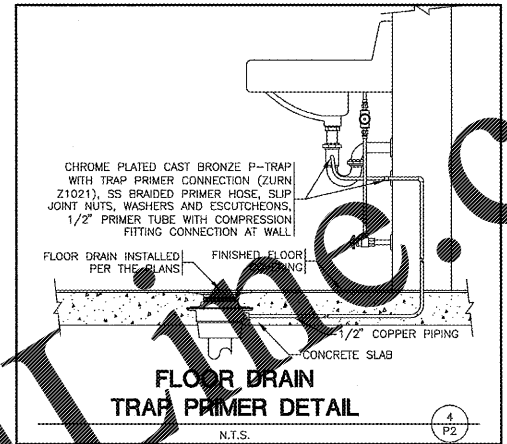


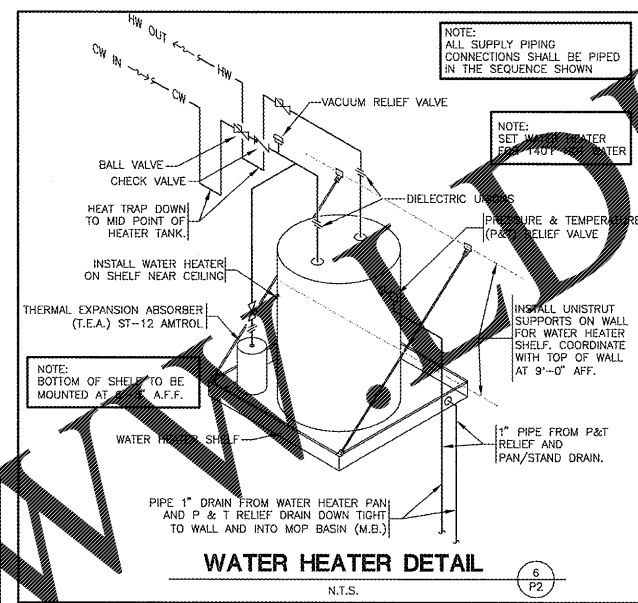
**Order Plans**



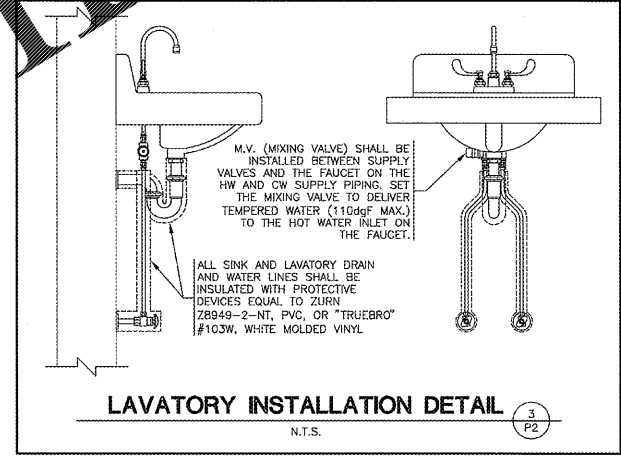
**TYPICAL EXTERIOR CLEANOUT DETAIL**  
N.T.S. (B) P2



**FLOOR DRAIN TRAP PRIMER DETAIL**  
N.T.S. (4) P2



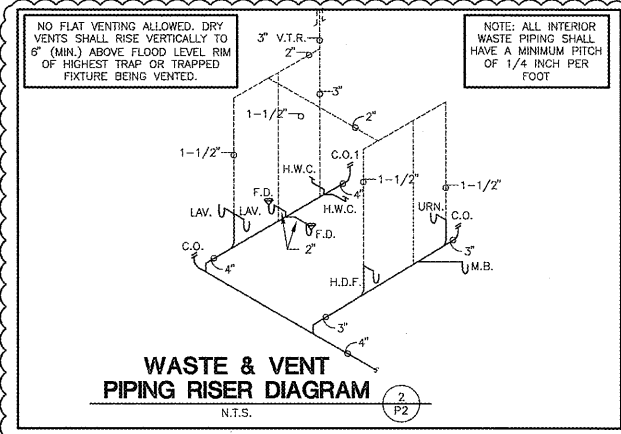
**WATER HEATER DETAIL**  
N.T.S. (6) P2



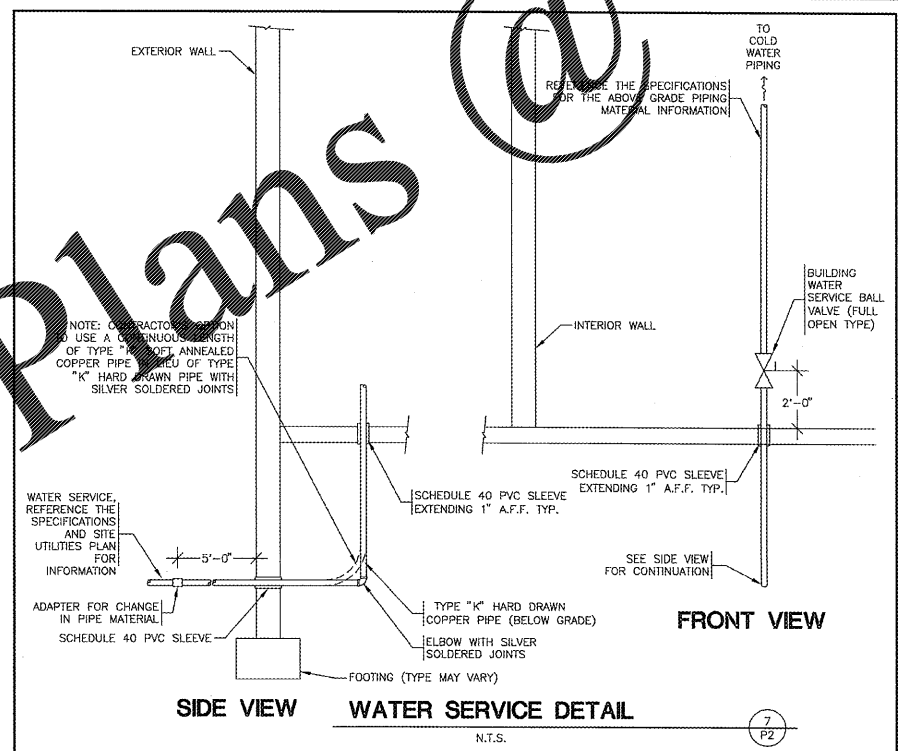
**LAVATORY INSTALLATION DETAIL**  
N.T.S. (3) P2

**PLUMBING CALCULATIONS**

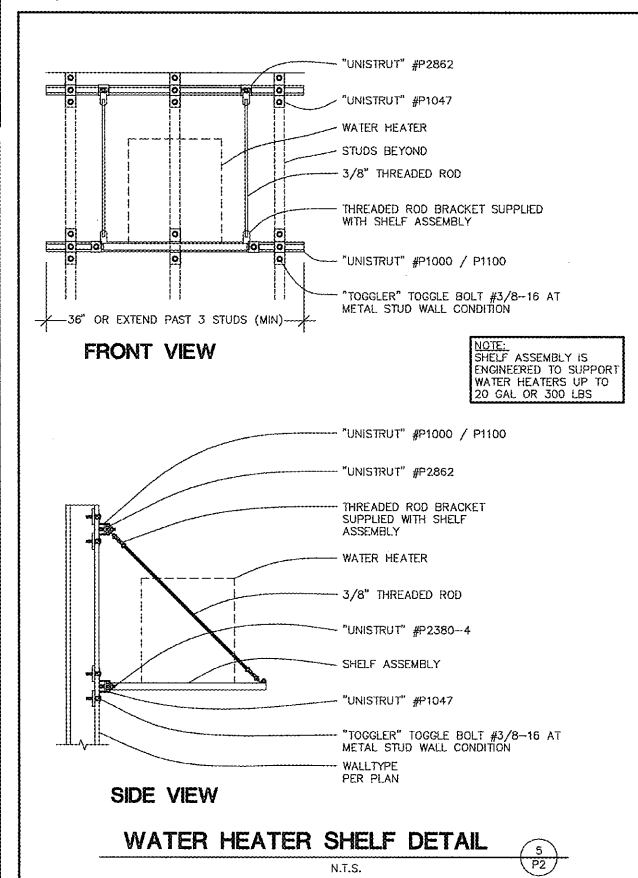
FIXTURE	QUANTITY	TOTAL-SFU	TOTAL-HW	TOTAL-CW	DFU
W.C. (TANK)	2	5	10	0	4
URN. (URINAL)	1	5	0	0	4
LAV. (LAVATORY)	2	2	1.5	1.5	4
M.P. (MOP BASIN)	1	3	1.5	0	2
H.D.F. (FOUNTAIN)	1	0.25	0	0	0.50
H.B. (HOSE BIB)	2	3	6	0	0
<b>TOTAL</b>		<b>28.25</b>	<b>TOTAL-HW</b>	<b>TOTAL-CW</b>	<b>TOTAL</b>
					<b>18.50</b>
TOTAL CW GPM		AVERAGE DAILY FLOW = 127 gal/DAY			
COLD WATER SERVICE SIZE	1"	PEAK DESIGN = 1.5 gal/DAY			



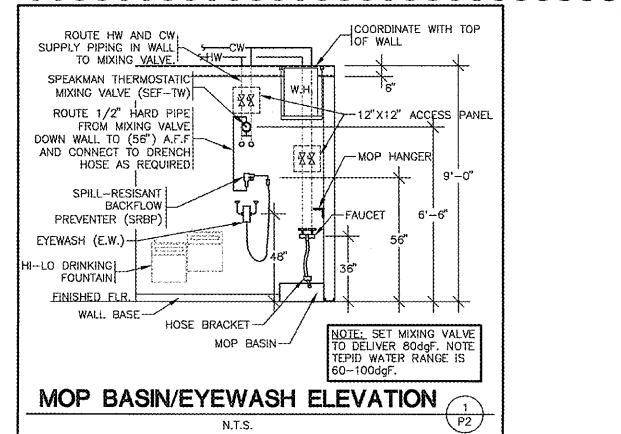
**WASTE & VENT PIPING RISER DIAGRAM**  
N.T.S. (2) P2



**WATER SERVICE DETAIL**  
N.T.S. (7) P2



**WATER HEATER SHELF DETAIL**  
N.T.S. (5) P2



**MOP BASIN/EYEWASH ELEVATION**  
N.T.S. (1) P2

Common K. Collins, P.E. #030587  
10 E. Bantelwood Rd. Suite 1000  
Springfield, Missouri 65804  
P: 417.881.0003  
F: 417.881.0003  
mccollins@esterychneider.com  
Mike Eckhardt & Collins, Inc.  
A MISSOURI PROFESSIONAL SERVICE



**CRAIG A. SCHNEIDER, AIA**  
ARCHITECT

1736 East Sunshine, Suite 417  
Springfield, Missouri 65804  
e-mail: architect@esterychneider.com

PROJECT:  
**NEW O'REILLY AUTO PARTS STORE**  
NC STATE HWY 211  
SEVEN LAKES, NC

**O'Reilly AUTO PARTS**

CORPORATE OFFICES  
233 SOUTH PATTERSON  
SPRINGFIELD, MISSOURI 65802  
(417) 862-2674 TELEPHONE

COMM # 4155  
DATE: 3-23-18  
REVISION DATE: 8-8-18