

AUTOMATIC LIGHTING CONTROL

COMPLIANCE WITH ENERGY CODE IS ACHIEVED BY:

- ONCE THE EMS HAS BEEN PROGRAMMED, THE INTERIOR AND EXTERIOR LIGHTS WILL TURN ON AND OFF USING THE FOLLOWING LOGIC: SEE EM SHEETS.
 - INTERIOR WORK LIGHTS WILL TURN ON WITH FIRST MOTION IN THE STORE AND WILL TURN OFF 15 MINUTES AFTER LAST MOTION ONCE THE STORE IS CLOSED.
 - INTERIOR SALES LIGHTS WILL TURN ON AT STORE OPENING AND TURN OFF 15 MINUTES AFTER STORE CLOSING.
 - EXTERIOR SIGN LIGHTS WILL TURN ON WHEN ITS DARK ENOUGH OUTSIDE ANYTIME DURING STORE HOURS, AND WILL TURN OFF AT STORE CLOSING.
 - EXTERIOR SITE LIGHTS WILL TURN ON WHEN IT IS DARK ENOUGH OUTSIDE AND IT IS WITHIN STORE HOURS OR THERE IS MOTION IN THE STORE. THEY WILL TURN OFF 30 MINUTES AFTER LAST MOTION ONCE THE STORE IS CLOSED.
- RESTROOMS AND OFFICES: ALL LIGHTING IN THESE AREAS ARE CONTROLLED BY OCCUPANT-SENSING DEVICES.

EXTERIOR LIGHT FIXTURE SCHEDULE

ALL ITEMS LISTED ON THE "LIGHT FIXTURE SCHEDULE" WILL BE SUPPLIED BY THE OWNER (O'REILLY). ITEMS SHALL BE DIRECT ORDERED AND OR RELEASED FROM THE LISTED ELECTRICAL EQUIPMENT DISTRIBUTOR.

GRAYBAR ELECTRIC CO. INC.
11885 LACKLAND ROAD
ST. LOUIS, MO 63146

GRAYBAR O'REILLY TEAM
EMAIL: oreilly@graybar.com
TOLL FREE: (314) 573-2080

MARK	MFR.	CATALOG NUMBER	SUPPLY VOLTAGE	FINISH	MOUNTING		LAMPS		WATTAGE	NOTES
					SURFACE WALL	SURF. CEILING	FLUORESCENT	LED		
LED EXTERIOR LIGHTS										
WP1	LSI	XWM-FT-LED-06-50-UE-BRZ NO SUBSTITUTIONS	120	DARK BRONZE	X		X	1	59	FULL CUT-OFF. ARCHITECTURAL ELEVATIONS SHOW DIMENSIONED LOCATIONS.
LED POLE LIGHTS										
P1	LSI	XALM-3-LED-SS-50-UE-BRZ 55QB3-S110-25-S-BRZ-LAB-5BC	120	DARK BRONZE		X	X	1	154	25' POLE LENGTH, FULL CUT-OFF, NO SUBSTITUTIONS. ANCHOR BOLTS W/ PLATE & TEMPLATE

FIXTURE QUANTITY TO BE VERIFIED WITH SITE PLAN QUANTITY

Graybar Electric Co. Inc.
11885 Lackland Road
St. Louis, Missouri 63146
Tel: 314.573.2080
Fax: 314.573.2080
www.graybar.com

Graybar O'Reilly Team
oreilly@graybar.com
Toll Free: (314) 573-2080

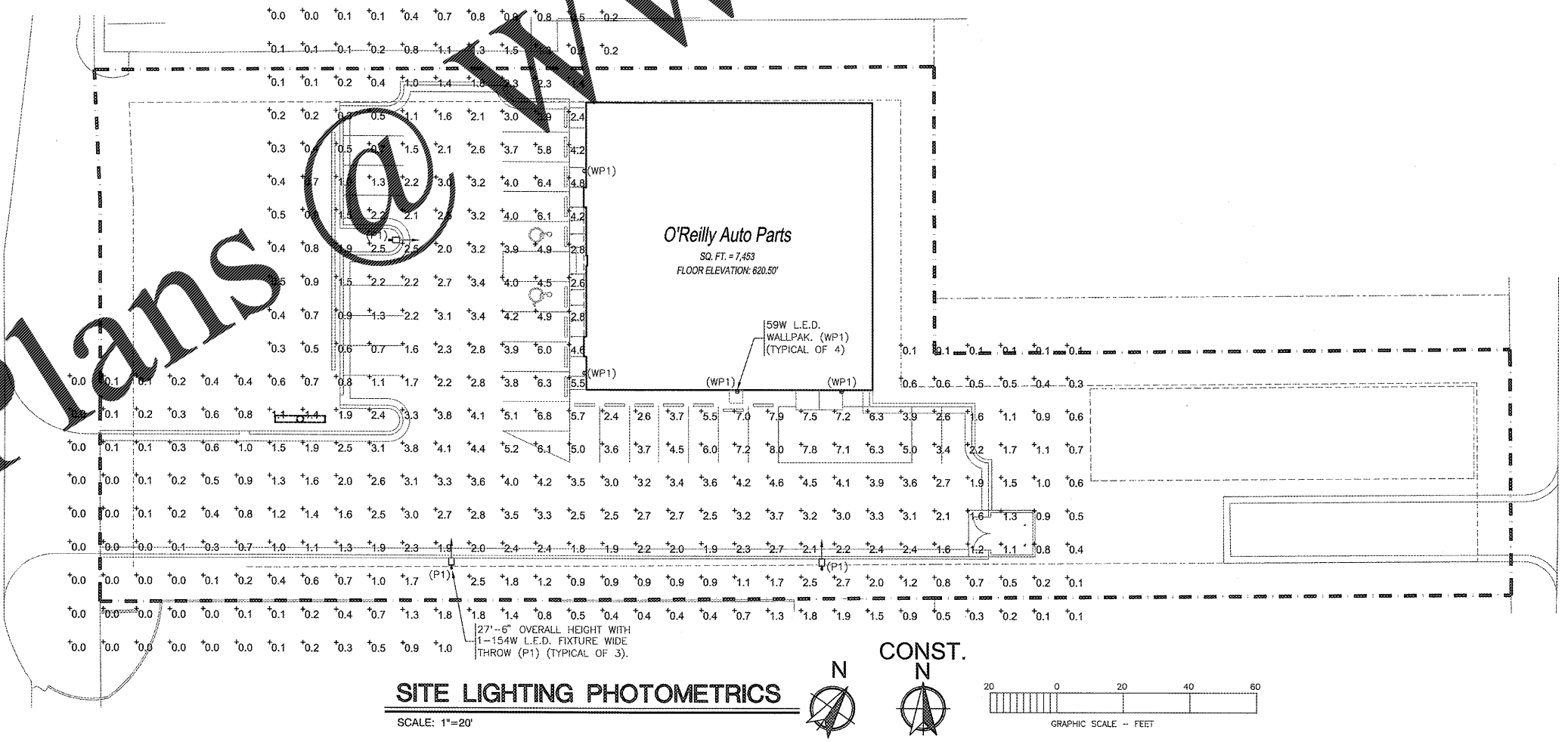


CRAIG A. SCHNEIDER, AIA
ARCHITECT
1736 East Sunshine, Suite 417
Springfield, Missouri 65804
e-mail: architect@esterjschneider.com

PROJECT:
NEW O'REILLY AUTO PARTS STORE
NC STATE HWY 211
SEVEN LAKES, NC
SITE PHOTOMETRIC PLAN

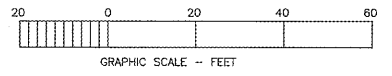
O'Reilly AUTO PARTS
CORPORATE OFFICES
233 SOUTH PATTERSON
SPRINGFIELD, MISSOURI 65802
(417) 862-2674 TELEPHONE

COMM # 4155
DATE: 3-23-18
REVISION DATE: 8-8-18



SITE LIGHTING PHOTOMETRICS

SCALE: 1"=20'



Order Plans
NORTH CAROLINA STATE
HIGHWAY 211

WWW.LDILine.com