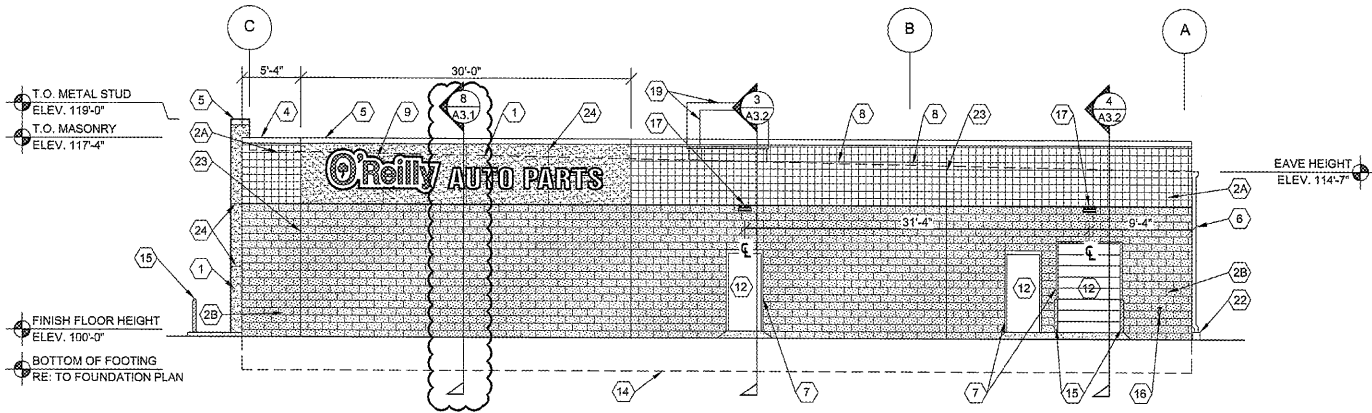


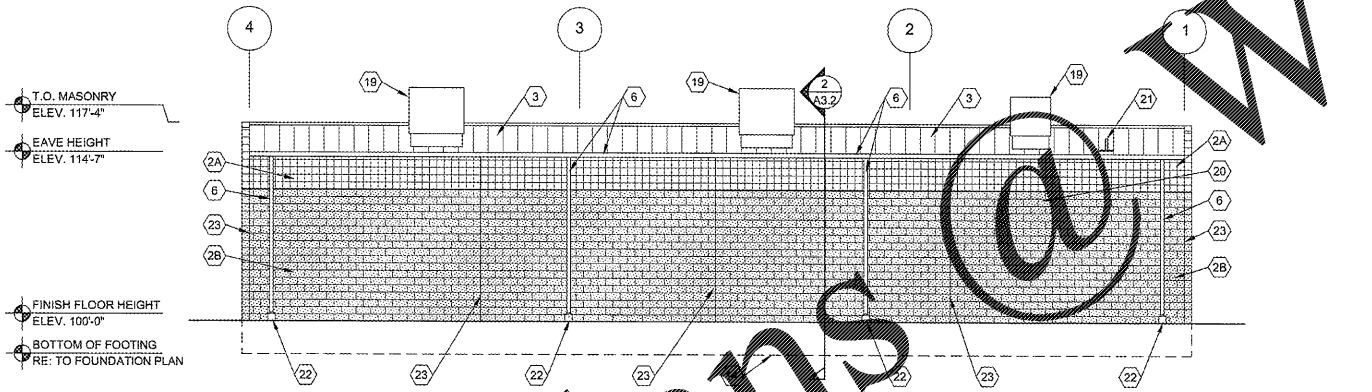
**1 WEST EXTERIOR ELEVATION**

**A2.1** SCALE: 1/8" = 1'-0"



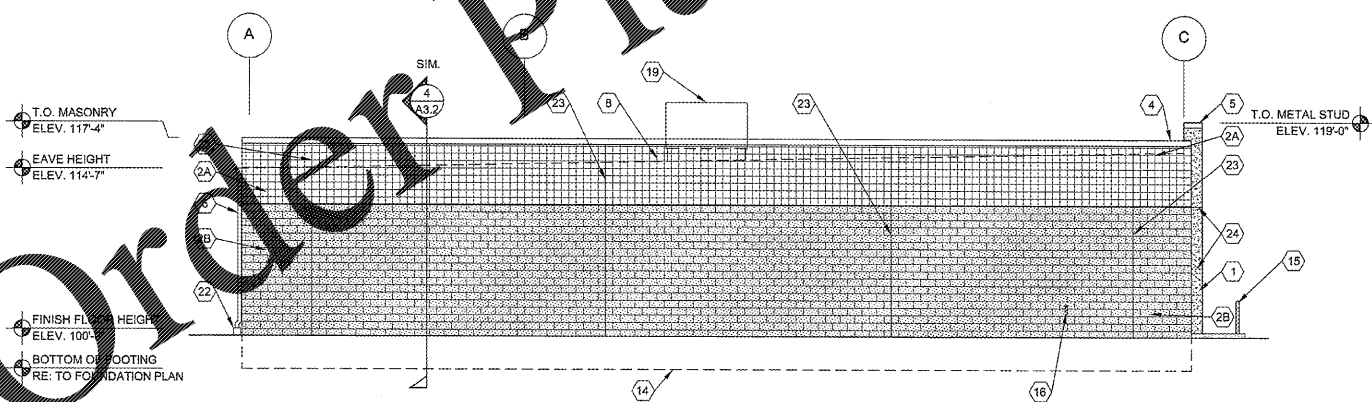
**2 SOUTH EXTERIOR ELEVATION**

**A2.1** SCALE: 1/8" = 1'-0"



**3 EAST EXTERIOR ELEVATION**

**A2.1** SCALE: 1/8" = 1'-0"



**4 NORTH EXTERIOR ELEVATION**

**A2.1** SCALE: 1/8" = 1'-0"

**EXTERIOR FINISH SCHEDULE**

**EXTERIOR INSULATION AND FINISH SYSTEM (EIFS)**  
**KEY NOTE NO. 1:**  
 MFG: DRYVIT SPECIFIED, EQUAL BY STO OR BASF (NO SUBSTITUTES)  
 SERIES: OUTSULATION PLUS MD  
 TEXTURE: SANDBLAST  
 COLOR: DRYVIT "ORAP010305" STRATOTONE HIGH PERFORMANCE  
 COLOR STANDARD: SHERWIN WILLIAMS "POSITIVE RED" SW6871 (SHER-CRYL) GLOSS

**UNIT MASONRY**  
**KEY NOTE NO. 2A:**  
 TYPE: CONCRETE MASONRY UNIT (CMU)  
 MFG: (REFER TO PROJECT MANUAL)  
 SIZE: 8"x8"x16" (NOM.)  
 TEXTURE: SMOOTH FACE SINGLE SCORE  
 COURSING: RUNNING BOND  
 FINISH: FIELD PAINT (ACCENT COLOR)  
 COLOR: SHERWIN WILLIAMS "SOFTER TAN" SW8141 (SEMI-GLOSS)  
 COATS:  
 (1) COAT SW "PREPRITE" BLOCK FILLER B25W25 (NO LESS THAN 8 MILS) AND (2) COATS SW "CONFLX XL" SMOOTH ELASTOMERIC A5-400 (NO LESS THAN 5.7 MILS EACH COAT)

COATS (COLD WEATHER APPLICATIONS):  
 (1) COAT SW "LOXON BLOCK SURFACER" (NO LESS THAN 8 MILS) AND (2) COATS SW "ULTRACRETE" SOLVENT BORNE SMOOTH B46 (NO LESS THAN 5.7 MILS EACH COAT OR 16 MILS TOTAL)

**KEY NOTE NO. 2B:**  
 TYPE: CONCRETE MASONRY UNIT (CMU)  
 MFG: (REFER TO PROJECT MANUAL)  
 SIZE: 8"x8"x16" (NOM.)  
 TEXTURE: SPLIT FACE  
 COURSING: RUNNING BOND  
 FINISH: FIELD PAINT (FIELD COLOR)  
 COLOR: SHERWIN WILLIAMS "LATTE" SW6108 (SEMI-GLOSS)  
 COATS:  
 (1) COAT SW "PREPRITE" BLOCK FILLER B25W25 (NO LESS THAN 8 MILS) AND (2) COATS SW "CONFLX XL" SMOOTH ELASTOMERIC A5-400 (NO LESS THAN 5.7 MILS EACH COAT)

COATS (COLD WEATHER APPLICATIONS):  
 (1) COAT SW "LOXON BLOCK SURFACER" (NO LESS THAN 8 MILS) AND (2) COATS SW "ULTRACRETE" SOLVENT BORNE SMOOTH B46 (NO LESS THAN 5.7 MILS EACH COAT OR 16 MILS TOTAL)

**FLASHING AND SHEET METAL**  
**KEY NOTE NO. 3:**  
 TYPE: STANDING SEAM ROOFING SYSTEM  
 MFG: (REFER TO PRE-ENGINEERED METAL BUILDING SHOP DRAWINGS)  
 COLOR: GALVALUME

**KEY NOTE NO. 4:**  
 TYPE: CAP FLASHING AT MASONRY  
 MFG: (REFER TO PRE-ENGINEERED METAL BUILDING SHOP DRAWINGS)  
 FINISH: PREFINISHED  
 COLOR: EQUAL TO BUTLER BUILDING "COOL BIRCH WHITE"

**KEY NOTE NO. 5:**  
 TYPE: CAP FLASHING AT EXTERIOR INSULATION FINISH SYSTEM (EIFS)  
 MFG: (REFER TO PRE-ENGINEERED METAL BUILDING SHOP DRAWINGS)  
 FINISH: FACTORY PRIMED AND FIELD PAINT  
 COLOR: SHERWIN WILLIAMS "POSITIVE RED" SW6871 (SHER-CRYL) GLOSS WITH SHERWIN WILLIAMS THREE COMPONENT (B65T105 / B65V105 / B65C105) CLEAR URETHANE

**KEY NOTE NO. 6:**  
 TYPE: GUTTER AND DOWNSPOUTS  
 MFG: (REFER TO PRE-ENGINEERED METAL BUILDING SHOP DRAWINGS)  
 FINISH: PREFINISHED  
 COLOR: EQUAL TO BUTLER BUILDING "COOL BIRCH WHITE"

**DOORS AND WINDOWS**  
**KEY NOTE NO. 12:**  
 TYPE: STEEL DOORS AND FRAMES (DOORS NO. 2, 3, AND 7)  
 MFG: (OWNER FURNISHED / CONTRACTOR INSTALLED)  
 FINISH: FACTORY PRIMED AND FIELD PAINTED  
 COLOR: SHERWIN WILLIAMS "LATTE" SW6108 (SEMI-GLOSS)

**KEY NOTE NO. 13:**  
 TYPE: (REFER TO WINDOW SCHEDULE)  
 MFG: EFCO, KAWNEER, OR OLD CASTLE (VISTA WALL), (NO SUBSTITUTES)  
 COLOR: EFCO "IVY", KAWNEER "DARK IVY", VISTA WALL "INTERSTATE GREEN"

**PAINTING**  
**KEY NOTE NO. 15:**  
 TYPE: STEEL BOLLARDS (REFER TO CIVIL DRAWINGS)  
 FINISH: FIELD PRIME AND PAINT  
 COLOR: SHERWIN WILLIAMS "HUNT CLUB" SW6468 (SEMI-GLOSS)

**GENERAL NOTES**

- (A) REFER TO PROJECT MANUAL FOR ADDITIONAL REQUIREMENTS.
- (B) REFER TO CIVIL DRAWINGS FOR ADDITIONAL REQUIREMENTS.
- (C) REFER TO PLUMBING, MECHANICAL, AND ELECTRICAL DRAWINGS FOR SYSTEM TYPES AND ADDITIONAL REQUIREMENTS.
- (D) REFER TO EXTERIOR FINISH SCHEDULE FOR MATERIALS.
- (E) REFER TO PRE-ENGINEERED METAL BUILDING SHOP DRAWING FOR ADDITIONAL REQUIREMENTS.
- (F) REFER TO SCOPE OF WORK SCHEDULE FOR ADDITIONAL REQUIREMENTS.

**KEY NOTES**

- (1) EXTERIOR INSULATION AND FINISH SYSTEM (EIFS).
- (2A) CONCRETE MASONRY UNIT (CMU) EXTERIOR WALL CONSTRUCTION (FIELD COLOR). REFER TO PLANS, SECTIONS, AND DETAILS FOR ADDITIONAL REQUIREMENTS.
- (2B) CONCRETE MASONRY UNIT (CMU) EXTERIOR WALL CONSTRUCTION (FIELD COLOR). REFER TO PLANS, SECTIONS, AND DETAILS FOR ADDITIONAL REQUIREMENTS.
- (3) PRE-ENGINEERED METAL BUILDING SHEET METAL ROOFING SYSTEM.
- (4) PRE-ENGINEERED METAL BUILDING SHEET METAL FLASHING (AT MASONRY).
- (5) PRE-ENGINEERED METAL BUILDING SHEET METAL FLASHING (AT EIFS).
- (6) PRE-ENGINEERED METAL BUILDING SHEET METAL GUTTER AND DOWNSPOUT SYSTEM.
- (7) CONCRETE MASONRY UNIT (CMU) CORNER FINISHED JAMB UNIT.
- (8) LINE OF ROOF BEYOND WITH 1/4"-12" SLOPE MINIMUM.
- (9) SURFACE MOUNTED SIGN OWNER FURNISHED AND INSTALLED. PROVIDE BACKING FOR MOUNTING AND ROUGH-IN ELECTRICAL COORDINATE REQUIREMENTS WITH OWNER. REFER TO SHEET SG2.1.
- (10) BUILDING ADDRESS NUMBERS IN 8" HIGH HELVETICA WHITE VINYL ADHERED TO EXTERIOR FACE OF GLAZING.
- (11) (NOT USED).
- (12) EXTERIOR DOOR AND FRAME SYSTEM. REFER TO FLOOR PLAN AND DOOR SCHEDULE FOR TYPES.
- (13) EXTERIOR WINDOW SYSTEM. REFER TO FLOOR PLAN AND WINDOW SCHEDULE FOR TYPES.
- (14) APPROXIMATE LINE OF FOUNDATION, REFER TO STRUCTURAL DRAWINGS.
- (15) STEEL BOLLARDS, REFER TO CIVIL AND STRUCTURAL DRAWINGS.
- (16) HOSE BIB, REFER TO PLUMBING DRAWINGS.
- (17) LIGHT FIXTURE, REFER TO ELECTRICAL DRAWINGS.
- (18) (NOT USED).
- (19) MECHANICAL ROOF TOP UNIT, REFER TO MECHANICAL DRAWINGS.
- (20) MECHANICAL WALL PENETRATION (INSTALL AT 10'-0" MINIMUM TO BOTTOM OF CAP), REFER TO MECHANICAL DRAWINGS. PROVIDE FRAMING, FLASHING, AND SEALANT AS REQUIRED.
- (21) PLUMBING ROOF VENT, REFER TO PLUMBING DRAWINGS AND DETAIL 11/A4.2.
- (22) CONCRETE SPLASH BLOCK INSTALL AT EACH DOWNSPOUT.
- (23) MASONRY CONTROL JOINT, REFER TO STRUCTURAL DRAWINGS. PROVIDE SEALANT OVER 1/2" DIAMETER FOAM BACKER ROD.
- (24) RUSTICATION JOINT, REFER TO DETAIL 6/A3.2.

**CRAIG A. SCHNEIDER, AIA**  
**ARCHITECT**  
 1736 East Sunshine, Suite 417  
 Springfield, Missouri 65804  
 Tel: 417.862.0515  
 Fax: 417.862.3265  
 e-mail: architect@ostertschneider.com

---

**PROJECT:**  
**NEW O'REILLY AUTO PARTS STORE**  
**NC STATE HWY 211**  
**SEVEN LAKES, NC**  
**EXTERIOR ELEVATIONS**

---

**ORDER PLANS @ WWW.OSTERTSCHNEIDER.COM**

---

CONTRACT #	4155
DATE:	3-23-18
REVISION	
DATE:	8-8-18

A2.1