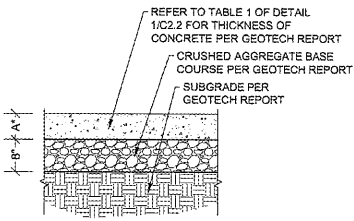


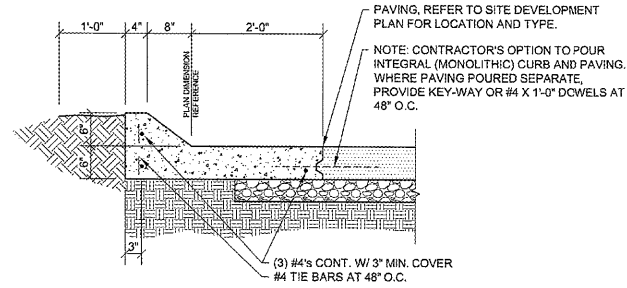
PROVIDE CONTROL JOINTS AT 12' O.C. (25% SLAB THICKNESS)

TABLE 1**		
PAVEMENT TYPE	CONCRETE PAVEMENT SECTION	
	STANDARD DUTY	HEAVY DUTY
CONCRETE "A"	5.0 INCHES	7.0 INCHES

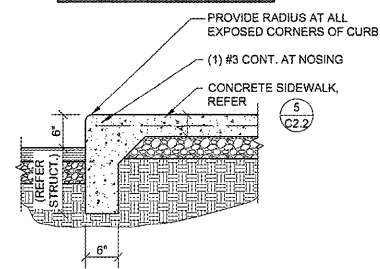
**PAVEMENT DESIGN IS BASED ON GEOTECHNICAL REPORT PROVIDED BY THE OWNER DATED 08/26/2017. ANDERSON ENGINEERING PROVIDES NO WARRANTY OR GUARANTEE FOR THIS DESIGN. CONTRACTOR IS RESPONSIBLE TO FULLY READ AND FOLLOW THE RECOMMENDATIONS OF THE PROJECT GEOTECHNICAL REPORT.



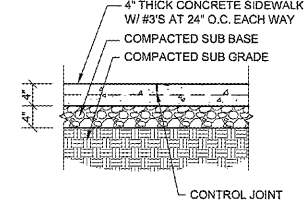
PROVIDE CONTROL JOINTS AT 10'-0" O.C. (25% SLAB THICKNESS)



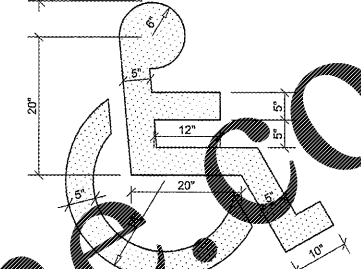
NOTE: REFER TO SITE GRADING PLAN FOR ELEVATIONS OF PAVEMENT ADJACENT TO SIDEWALKS



PROVIDE TOOLED CONTROL JOINTS AT 6' O.C. (25% SLAB THICKNESS) AND ISOLATION JOINTS AT 24' O.C. UNLESS OTHERWISE NOTED.



NOTE: SYMBOL TO BE PAINTED (HIGHWAY GRADE) OR DECAL ADHERED TO PAVEMENT. COLOR TO MATCH STRIPING UNLESS OTHERWISE REQUIRED BY LOCAL ACCESSIBILITY STANDARDS.



1 CONCRETE (STANDARD DUTY) PAVING SECTION

C2.2 SCALE: 3/4" = 1'-0"

2 NOT USED

C2.2 SCALE: NTS

3 CONCRETE CURB SECTION

C2.2 SCALE: 3/4" = 1'-0"

4 CONCRETE SIDEWALK CURB SECTION

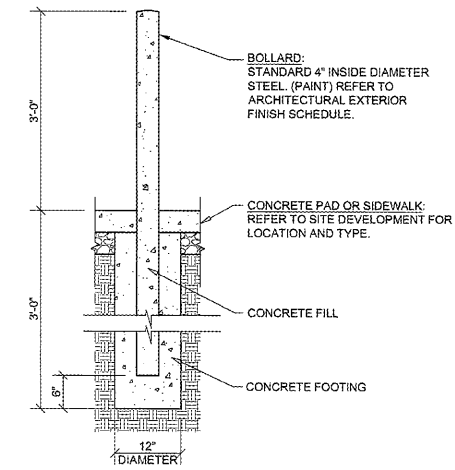
C2.2 SCALE: 3/4" = 1'-0"

5 CONCRETE SIDEWALK SECTION

C2.2 SCALE: 3/4" = 1'-0"

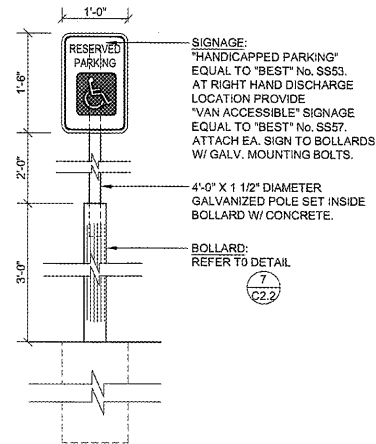
6 ACCESSIBLE PARKING PAVEMENT STRIPING DETAIL

C2.2 SCALE: 3/4" = 1'-0"



7 STEEL BOLLARD SECTION

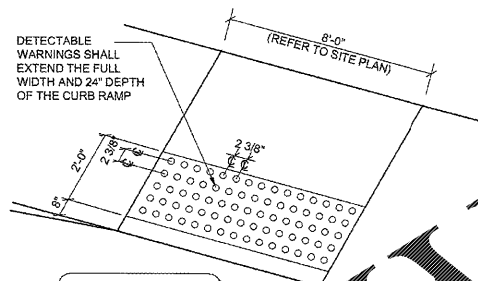
C2.2 SCALE: 3/4" = 1'-0"



8 HANDICAP PARKING SIGN DETAIL

C2.2 SCALE: 3/4" = 1'-0"

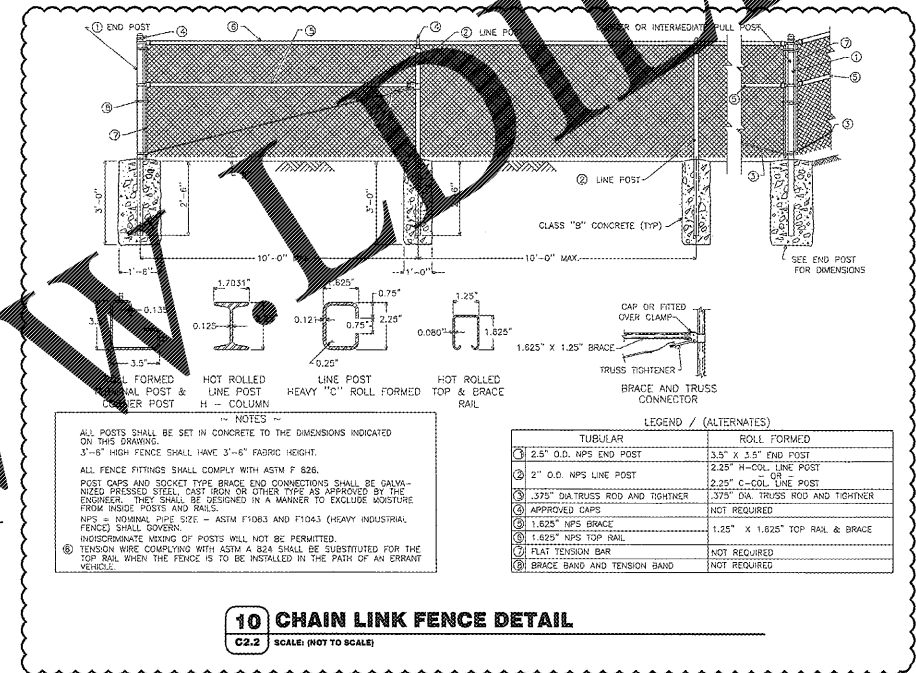
PROVIDE DETECTABLE WARNINGS WITH RAISED PATTERN (CAUTION YELLOW COLOR WITH 3/8" DIA. AND RAISE .02" PER ADAAG 4.7.7)



FOR LOCATIONS WITH CIRCULATION PERPENDICULAR TO RAMP

9 DETECTABLE WARNING DETAIL

C2.2 SCALE: (NOT TO SCALE)



10 CHAIN LINK FENCE DETAIL

C2.2 SCALE: (NOT TO SCALE)

Order Plans @

CRAIG A. SCHNIDER, AIA
ARCHITECT
1736 East Sunshine, Suite 417
Springfield, Missouri 65804
417.862.0523
417.862.3265
architect@craigschneider.com

PROJECT:
NEW O'REILLY AUTO PARTS STORE
NC STATE HWY 211
SEVEN LAKES, NC
SITE DEVELOPMENT DETAILS

O'Reilly AUTO PARTS
CORPORATE OFFICES
233 SOUTH PATTERSON
SPRINGFIELD, MISSOURI 65802
(417) 862-2674 TELEPHONE

CONV # 4155
DATE: 3-23-18
REVISION
DATE: 8-8-18