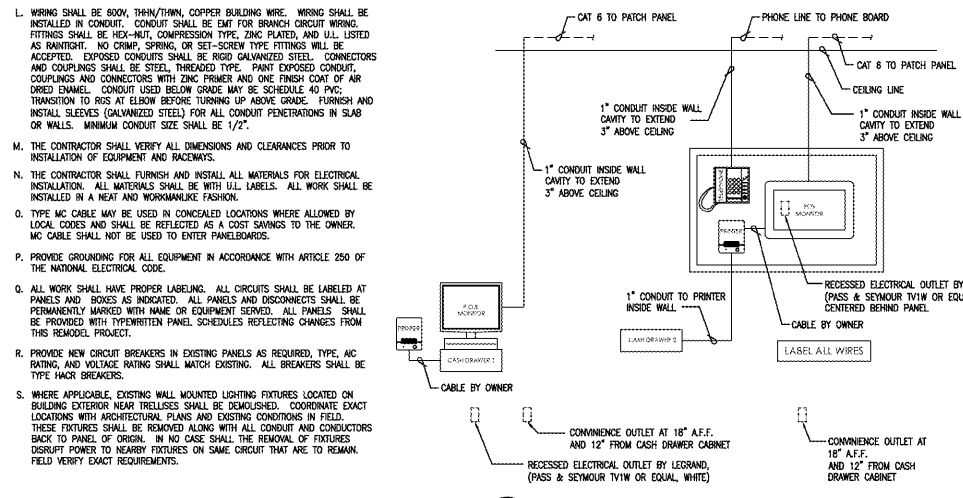


**GENERAL NOTES:**

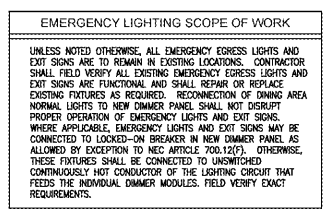
- A. REFER TO ARCHITECTURAL REFLECTED CEILING PLAN AND ELEVATIONS FOR EXACT LIGHTING LAYOUT AND LIGHTING FIXTURE SCHEDULE.
- B. ALL WIRING SHALL BE NEW AND FIXTURES SHALL BE OBTAINED AS INDICATED. EXISTING DEVICE BOXES AND CONDUIT SCHEDULED TO BE REMOVED MAY BE REUSED IF THEY COMPLY WITH ALL REQUIREMENTS OF THE NEC, IF NEW DEVICE LOCATION COINCIDES WITH EXISTING LOCATION, AND IS PRACTICAL.
- C. CONDUIT AND CIRCUIT ROUTINGS SHOWN ARE SCHEMATIC AND DIAGRAMMATIC ONLY. FIELD DETERMINE EXACT CIRCUIT ROUTING AND PROVIDE ALL NECESSARY CONDUITS, FITTINGS, JUNCTION BOXES, AND OTHER ITEMS.
- D. ALL DIMMER CIRCUITS SHALL HAVE A SEPARATE NEUTRAL. SHARING OF NEUTRALS IS NOT ALLOWED.
- E. UNLESS NOTED OTHERWISE, ALL CIRCUITS SHALL BE #12, 1/2", 1/2". MAKE ADJUSTMENTS AS REQUIRED FOR VOLTAGE DROP PER NEC.
- F. FIELD DETERMINE EXACT LOCATIONS OF ALL PANELS AND CONTROLS.
- G. ALL ELECTRICAL CONSTRUCTION SHALL CONFORM TO THE NATIONAL ELECTRICAL CODE, APPLICABLE NEMA AND IEEE PUBLICATIONS, ALL STANDARDS AND OSHA REQUIREMENTS. WORK SHALL COMPLY WITH LOCAL, COUNTY, STATE AND NATIONAL CODES HAVING JURISDICTION.
- H. ELECTRICAL DEVICE INSTALLATION SHALL COMPLY WITH ACCESSIBILITY CODES ADOPTED FOR LOCAL, ALL SPECIALLY MOUNT APPLICATIONS. SWITCHES, RECEPTACLES, AND ENVIRONMENTAL CONTROLS SO THAT THEY ARE MOUNTED WITH THE TOP OF THE DEVICE NO HIGHER THAN FORTY-EIGHT (48") ABOVE THE FINISHED FLOOR AND THE BOTTOM OF THE DEVICE NO LOWER THAN FIFTEEN (15") ABOVE THE FINISHED FLOOR. ELECTRICAL DEVICES ABOVE A COUNTERTOP OR OTHER OBSTRUCTION SHOULD COMPLY WITH ALL APPLICABLE SECTIONS OF ICC, ANSI, AND ADA. VERSION OF CODE SHALL BE AS ADOPTED BY AHP.
- I. ALL LIGHT FIXTURES ARE EXISTING UNLESS NOTED OTHERWISE. LOCATIONS ARE INDICATED ON THIS PLAN FOR REFERENCE ONLY. FIELD VERIFY ALL LIGHTING FIXTURE LOCATIONS.
- J. ABANDONED POWER WIRING WILL BE REMOVED BACK TO THE SOURCE. THE ACCESSIBLE PORTIONS OF ABANDONED CONDUIT/TUBING AND EQUIPMENT SHALL BE REMOVED. THE ACCESSIBLE PORTIONS OF ABANDONED CABLES (VOICE, DATA, VIDEO, ALARM, ETC.) SHALL BE REMOVED.
- K. CONTRACTOR SHALL INSPECT SITE PRIOR TO SUBMITTING BID.

**KEYED NOTES:**

1. BAR CABINET & SIGNAGE LIGHTS SHALL BE CONNECTED TO CIRCUIT INDICATED. COORDINATE INSTALLATION WITH MILLWORK.
2. CONTRACTOR TO INSTALL OWNER PROVIDED FLUORESCENT TV. AT LOCATION INDICATED. PROVIDE POWER CONNECTION AS REQUIRED. COORDINATE MOUNTING HEIGHT WITH OWNER AND ARCHITECT PRIOR TO ROUGH-IN.
3. REPLACE EXISTING LIGHT FIXTURE WITH TYPE NOTED. CONNECT TO CIRCUIT INDICATED AND REMOVE FROM TRACK LINE (IF APPLICABLE).
4. NOTE NOT USED.
5. NEW CHANDELIER FIXTURE. CONNECT TO CIRCUIT INDICATED.
6. EXISTING TRACK LIGHT FIXTURE TO REMAIN.
7. EXISTING RESTROOM LIGHTING TO BE RELAMPED AND RECONNECTED TO CIRCUIT INDICATED. COORDINATE EXACT REQUIREMENTS AND LOCATIONS WITH OWNER AND MANUFACTURER'S INSTRUCTIONS. LAMP AND ACCESSORIES FOR FIXTURE SHALL BE PER ARCHITECTURAL DRAWINGS.
8. RESTROOM EXHAUST FAN TO REMAIN ON EXISTING CIRCUIT AND CONTROLS UNLESS CURRENTLY CONNECTED TO EXISTING DIMMER PANEL. BEING DEMOLISHED, IN WHICH CASE FAN SHALL BE CONNECTED TO NEW NON-DIMMED CIRCUIT. IN NO CASE SHOULD THE FAN BE CONNECTED TO THE RESTROOM LIGHTING CIRCUIT. CONTROLS SHALL BE PER OWNER REQUIREMENTS. FIELD VERIFY EXACT REQUIREMENTS.
9. NEW PENDANT FIXTURE. PROVIDE CONNECTION TO CIRCUIT INDICATED.
10. NEW LIGHT FIXTURE, TRACK OR MONOPOINT. PROVIDE CONNECTION TO CIRCUIT INDICATED. EXISTING ELECTRICAL CONNECTION MAY BE REUSED WHERE PRACTICAL/APPLICABLE.
11. PENDANTS AND TRACK SHALL BE ON SEPARATE CIRCUITS INDICATED.
12. EXISTING EMERGENCY LIGHT FIXTURE OR EXIT SIGN SHALL REMAIN, SUBJECT TO REPAIR OR REROUTING PER EMERGENCY LIGHTING SCOPE OF WORK NOTE ON THIS PAGE.
13. NEW STRIP LIGHT FIXTURE. PROVIDE CONNECTION TO CIRCUIT INDICATED.
14. NOTE NOT USED.
15. RELOCATED EMERGENCY LIGHT FIXTURE OR EXIT SIGN, SUBJECT TO REPAIR OR REROUTING PER EMERGENCY LIGHTING SCOPE OF WORK NOTE ON THIS PAGE.
16. EXISTING TRACK LIGHT OR MONOPOINT FIXTURE TO BE REPLACED. PROVIDE NEW TRACK OR MONOPOINT FIXTURE OF TYPE, FINISH, AND LOCATION PER ARCHITECTURAL ROP. CONNECT TO CIRCUIT INDICATED. COORDINATE POSITIONING OF HEADS WITH OWNER. EACH TABLE SHALL BE ILLUMINATED BY ONE HEAD, OTHER HEADS SHALL BE DIRECTED TO ILLUMINATE DECOR & PATH OF TRAVEL.
17. CONTRACTOR TO INSTALL OWNER PROVIDED CABLE RECEIVER AT THIS LOCATION. PROVIDE POWER AND CABLE CONNECTION AS REQUIRED. COORDINATE MOUNTING HEIGHT WITH OWNER AND ARCHITECT PRIOR TO ROUGH-IN.
18. PROVIDE CAT6 CABLE FROM TV TO MANAGER'S OFFICE. COORDINATE EXACT TERMINATION POINTS WITH OWNER.
19. PROVIDE USB PLUG/MOD. CONNECT TO CIRCUIT INDICATED. COORDINATE INSTALLATION WITH MILLWORK.
20. NEW SOFT/LIGHTS. TYPE AND FINISH PER ARCHITECTURAL DRAWINGS. PROVIDE CONNECTION TO CIRCUIT INDICATED.
21. NOTE NOT USED.
22. NEW TO GO LIGHT FIXTURE, TYPE AND FINISH PER ARCHITECTURAL DRAWINGS. PROVIDE CONNECTION TO CIRCUIT INDICATED.
23. PROVIDE DUPLEX RECEPTACLE AT RIGHT END OF BACK BAR SECTION INDICATED. CONNECT TO CIRCUIT INDICATED. COORDINATE EXACT REQUIREMENTS WITH OWNER.
24. PROVIDE CONNECTION TO NEW CONVENIENCE OUTLET. COORDINATE EXACT REQUIREMENTS WITH OWNER.
25. EXISTING LUTRON RELAY MODULE IN LUTRON PANEL DRIVEN BY INTEGRATED OUTPUT FROM DINING SYSTEM TIME CLOCK. USE EXISTING CONTACTORS AND CONNECT TO LUTRON SYSTEM AS REQUIRED PER MANUFACTURER'S INSTRUCTIONS. COORDINATE EXACT REQUIREMENTS WITH OWNER PRIOR TO WORK. REFER TO DETAIL AND PANEL SCHEDULES ON SHEET E1.2. FIELD VERIFY EXACT LOCATION OF EXISTING EXTERIOR LIGHTING CONTROLS.
26. EXISTING DIMMER PANEL TO REMAIN AT THIS LOCATION. COORDINATE EXACT REQUIREMENTS PRIOR TO WORK.
27. LOCATE LUTRON REMOTE 4-BUTTON AND 5-BUTTON CONTROLLERS AT THIS LOCATION ADJACENT TO DIMMER PANEL. CONTROLLERS SHALL BE MOUNTED IN A 2-GANG JUNCTION BOX AT 48" AFF.
28. NOTE NOT USED.
29. NOTE NOT USED.
30. NOTE NOT USED.
31. NEW WINE CABINET LIGHT FIXTURES. CONNECT TO CIRCUIT INDICATED. FIELD VERIFY EXACT TYPE AND REQUIREMENTS.
32. NEW EXTERIOR FIXTURE. CONNECT TO CIRCUIT INDICATED. AREA EXTERIOR LIGHTING CIRCUIT. COORDINATE FINAL MOUNTING HEIGHT (IF APPLICABLE) AND LOCATION WITH ARCHITECTURAL ELEVATIONS. FIELD VERIFY EXACT TYPE AND REQUIREMENTS.
33. NEW ROOF MOUNTED FLOOD LIGHT. PROVIDE CONNECTION TO CIRCUIT AND CONTROLS AS EXISTING ROOF FLOOD.
34. CONNECT EXTERIOR EMERGENCY LIGHT HEAD OF CEILING TO CIRCUIT INDICATED. HOT CONDUCTOR ON LOCAL EXISTING LIGHTING CIRCUIT. PROVIDE WIRING AS REQUIRED. BACK TO PANEL. FIELD VERIFY EXACT REQUIREMENTS.
35. PROVIDE MILLWORK FOR NEW TO GO LIGHTS. COORDINATE EXACT REQUIREMENTS AND LOCATION WITH ARCHITECTURAL ELEVATIONS. CONNECT TO EXISTING ELECTRICAL CIRCUIT AND CONTROLS. FIELD VERIFY EXACT LOCATION.
36. BUILDING SIGNAGE TO BE INSTALLED BY OTHERS.



3 "TO GO" CASH/PANEL RISER DIAGRAM n.t.s.  
E1.1 NOT TO SCALE

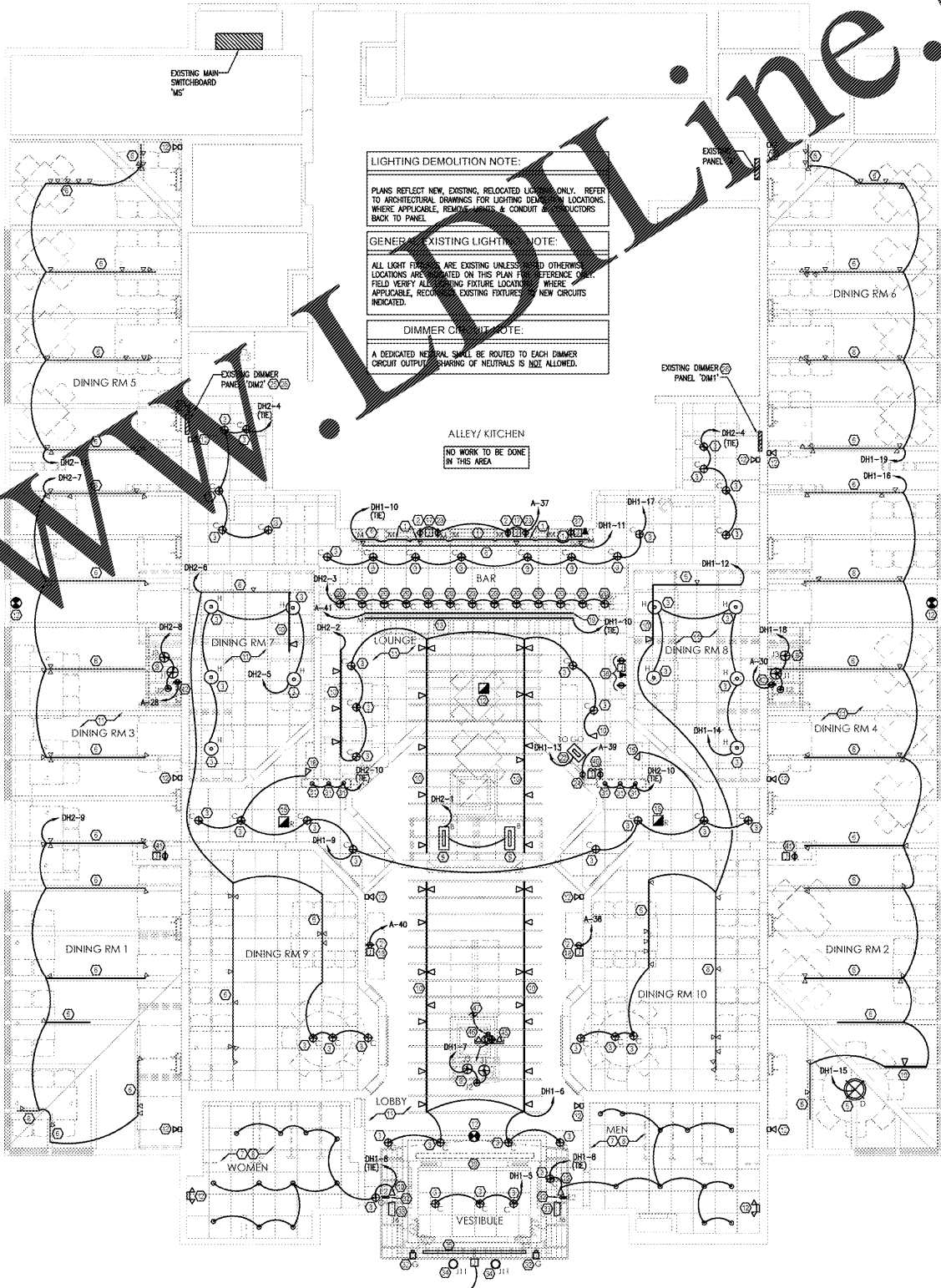


NONMAG GROUP SERVES AS COMMISSIONING AGENT, AND IS RESPONSIBLE FOR VERIFICATION OF CORRECT INSTALLATION, AND CONTROL PER DESIGN DOCUMENTS, TO ENSURE PROPER INSTALLATION. COORDINATE WITH NONMAG GROUP REPRESENTATIVE FOR QUESTIONS, CONCERNS, AND FIELD ISSUES REGARDING INTERIOR/EXTERIOR LIGHTING PLACEMENT, INSTALLATION AND CONTROL, AND THE INSTALLATION AND PROGRAMMING OF THE NEW LUTRON LIGHTING CONTROL SYSTEM. CONTACT NONMAG GROUP AT 866-853-8593. COORDINATE ALL DESIGN CHANGES WITH ENGINEER OF RECORD.

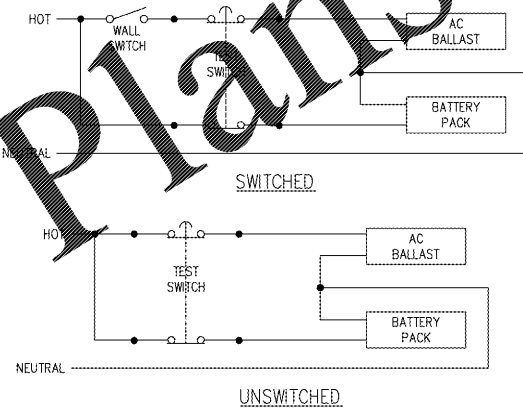
**LIGHTING DEMOLITION NOTE:**  
PLANS REFLECT NEW, EXISTING, RELOCATED LIGHTING ONLY. REFER TO ARCHITECTURAL DRAWINGS FOR LIGHTING DEMOLITION LOCATIONS. WHERE APPLICABLE, REMOVE LIGHTS & CONDUIT BACK TO PANEL.

**GENERAL EXISTING LIGHTING NOTE:**  
ALL LIGHT FIXTURES ARE EXISTING UNLESS NOTED OTHERWISE. LOCATIONS ARE SHOWN ON THIS PLAN FOR REFERENCE ONLY. FIELD VERIFY ALL EXISTING FIXTURE LOCATIONS. WHERE APPLICABLE, RECONNECT EXISTING FIXTURES TO NEW CIRCUITS INDICATED.

**DIMMER CIRCUIT NOTE:**  
A DEDICATED NEUTRAL SHALL BE ROUTED TO EACH DIMMER CIRCUIT OUTPUT. SHARING OF NEUTRALS IS NOT ALLOWED.



1 LIGHTING PLAN  
SCALE: 3/16" = 1'-0"  
E1.1



2 TYPICAL EMERGENCY BATTERY PACK DETAIL  
E1.1 NOT TO SCALE

Architectural Plans @

THIS DRAWING AND SPECIFICATIONS REMAIN THE PROPERTY OF THE DESIGN PROFESSIONAL. UNAUTHORIZED COPIES OF THESE DRAWINGS ARE STRICTLY PROHIBITED.

**NONMAG GROUP PA**  
**architects**

ARCHITECTS  
1000 N. W. 10TH ST., SUITE 100  
MIAMI, FL 33136  
TEL: 305.573.1001  
FAX: 305.573.1002  
www.nonmag.com

PROJECT #:  
17-0341

OF THESE DRAWINGS IS STRICTLY PROHIBITED.

THIS DRAWING AND SPECIFICATIONS REMAIN THE PROPERTY OF THE DESIGN PROFESSIONAL. UNAUTHORIZED COPIES OF THESE DRAWINGS ARE STRICTLY PROHIBITED.

**DEVITA**  
ARCHITECTS  
1000 N. W. 10TH ST., SUITE 100  
MIAMI, FL 33136  
TEL: 305.573.1001  
FAX: 305.573.1002  
www.devita.com

OF THESE DRAWINGS IS STRICTLY PROHIBITED.

THIS DRAWING AND SPECIFICATIONS REMAIN THE PROPERTY OF THE DESIGN PROFESSIONAL. UNAUTHORIZED COPIES OF THESE DRAWINGS ARE STRICTLY PROHIBITED.

**olive Garden**  
ITALIAN KITCHEN

OF THESE DRAWINGS IS STRICTLY PROHIBITED.

THIS DRAWING AND SPECIFICATIONS REMAIN THE PROPERTY OF THE DESIGN PROFESSIONAL. UNAUTHORIZED COPIES OF THESE DRAWINGS ARE STRICTLY PROHIBITED.

Issue Date: 04-26-2018

REVISION INFORMATION

1	
2	
3	
4	
5	
6	
7	
8	

Restaurant #: 1173

P1B (HIGH)

1711 GALLATIN RD NORTH

MADISON, TN

ELECTRICAL LIGHTING PLAN

E1.1

THIS DRAWING AND SPECIFICATIONS REMAIN THE PROPERTY OF THE DESIGN PROFESSIONAL. UNAUTHORIZED COPIES OF THESE DRAWINGS ARE STRICTLY PROHIBITED.