

2 EXISTING ELECTRICAL RISER (PARTIAL)
E1.2
NOT TO SCALE

EXISTING ELECTRICAL RISER KEYED NOTES:

- 1 EXISTING FEEDER TO REMAIN AS IS. NO WORK REQUIRED. SHOWN FOR INFORMATION ONLY.
- 2 EXISTING EQUIPMENT TO REMAIN.
- 3 CONNECT NEW ITEMS TO OR REMOVE EXISTING ITEMS FROM EXISTING CIRCUITS IN THIS PANEL PER PLAN AND SCHEDULES.
- 4 EXISTING PANEL 'A' FED FROM 200A, 3-POLE FUSED DISCONNECT WITH 200A FUSES IN 'MS'.
- 5 PROVIDE NEW LUTRON DIMMER SYSTEM PER DETAIL THIS SHEET. FEED FROM EXISTING 60A, 3-POLE BREAKER IN PANEL 'A' AND RECONNECT TO EXISTING FEEDER.

NOTE: PROVIDE WORK AND MATERIALS AS DEPICTED IN THESE DRAWINGS. IF ANY ADDITIONAL SYSTEMS (LIGHTING IN AREAS NOT BEING RENOVATED, HVAC CONTROLS, SECURITY, ETC.) THAT ARE NOT DIRECTLY AFFECTED BY WORK INDICATED, CONTRACTOR SHALL NOTIFY OWNER BEFORE PROCEEDING AND INCLUDE WORK TO RESTORE AFFECTED SYSTEMS TO PREVIOUS CONDITION.

NOTE: THIS RENOVATION RESULTS IN A NET LOAD REDUCTION; THE NEW LOAD ADDED IS SMALLER THAN THE EXISTING LOAD REMOVED.

PANEL A										
		VOLTAGE		208/120		3 PH 4W		AIC RATING		
FEEDER AMP FEEDS:		200		MANS:		225		MLO		
		FEED:		EXISTING		ENCLOSURE		EXISTING		
BKR	NOTE	LOAD DESCRIPTION	VA	CKT	PHASE	CKT	VA	LOAD DESCRIPTION	NOTE	BKR
20/1	E	KITCHEN LIGHTS / CASH DASH	948	1	A	2	1000	BAR PLUGMOLD	3	20/1
20/1	E	KITCHEN LIGHTS	744	3	B	4	500	TO GO COUNTER CONV	3	20/1
20/1	E	BAR TWO-CABLE CONV. OUTLETS	1000	6	C	6	300	LOBBY TWO-CABLE BOXES	3	20/1
20/1	E	KITCHEN LIGHTS	528	7	A	8	500	LOBBY TWO-CABLE BOXES	3	20/1
20/1	E	KITCHEN LIGHTS	648	9	B	10	2208	ROOFTOP & OUTDOOR WALL LGT	2, SH2	20/1
20/1	E	BAR PRINTERS	84	11	C	12	36	EXISTING LOAD	E	20/1
20/1	E	OFFICE LIGHTS & BREAK ROOM	240	13	A	14	36	CONTRACTOR	E	20/1
20/1	E	DINING RM 3 WINE COOLER	500	15	B	16	500	DINING RM 4 WINE COOLER	3	20/1
20/1	E	ROOFTOP RECEPTACLE	24	17	C	18	1500	ROAD SIGN	2, SH1	20/1
20/1	2, SH1	REAR AND RIGHT ROOF SIGN	1512	19	A	20	972	LEFT ROOF SIGN	2, SH1	20/1
20/1	E	MEN'S BATHROOM	360	21	B	22	1116	ROAD SIGN	2, SH1	30/1
20/1	E	WOMEN'S BATHROOM	324	23	C	24	2340	ROOFTOP & OUTDOOR WALL LGT	2, SH2	30/1
20/1	E	EXISTING LOAD	1000	25	A	26	1440	SIDE & FRONT OUTDOOR LGT	2, SH2	20/1
20/2	2, SH3	POLE LIGHTS AND ROOFTOP LGTS	1488	27	B	28	540	POLE AND ROOFTOP LGTS	2, SH3	20/2
60/3	3	DIMMER PANEL 'DM2'	576	29	C	30	504	DIMMER PANEL 'DM1'	3	60/3
		SPACE	280	33	A	34	978			
		SPACE	456	35	B	36	530			
		SPACE	0	37	A	38	0	SPACE		
		SPACE	0	39	B	40	0	SPACE		
		SPACE	0	41	C	42	0	SPACE		
Connected Load Per Phase			PH A:	9054	PH B:	9840	PH C:	8096		
Lighting			HVAC	Motors	Recept	Relief	Kitchen	Misc	Total VA	Amps
Connected VA			22460	0	2500	1000	0	1000	29990	74.8
Demand Factor			1.25	1.00	1.00	NEC	1.00	0.65	1.00	
Demand VA			28075	0	2500	1000	0	1000	32575	80.4

EXISTING PANEL GENERAL NOTES:

- P1. VERIFY ALL CIRCUITS ON EXISTING PANELS. ADJUST CIRCUITING AS REQUIRED TO MEET DESIGN INTENT OF DRAWINGS. FOR ANY VACATED CIRCUITS, REMOVE CONDUIT AND WIRING BACK TO PANEL, TURN BREAKER OFF, AND MARK BREAKER AS 'SPARE'. FOR EXISTING CIRCUITS MISLABELED BUT CONNECTED TO EXISTING LOAD REQUIRED TO REMAIN, FIELD DETERMINE LOAD AND PROVIDE APPROPRIATE DESCRIPTION IN PANEL DIRECTORY.
- P2. PROVIDE NEW TYPEWRITTEN PANEL DIRECTORY TO REFLECT NEW CONDITIONS UPON COMPLETION OF WORK DESCRIBED IN THESE DRAWINGS. CLEAN OFF/REMOVE/FRASE ALL HANDWRITTEN LABELING ON PANEL COVER. CIRCUIT DESCRIPTION SHALL EXIST ON PANEL DIRECTORY ONLY.
- P3. REUSE EXISTING CIRCUIT BREAKERS WHERE POSSIBLE. PROVIDE NEW BREAKERS AS REQUIRED, TYPE, VOLTAGE RATING, AND AIC RATING TO MATCH EXISTING.
- P4. CLEAN PANELBOARD, AND REPAIR OR REPLACE ANY MISSING OR DAMAGED COMPONENTS ON EXISTING PANELBOARDS AND DIMMING EQUIPMENT. FIELD VERIFY AND CORRECT EXACT REQUIREMENTS WITH OWNER.
- P5. EXISTING CIRCUIT DATA SHOWN IS TAKEN FROM EXISTING FACILITY DRAWINGS AND/OR FIELD OBSERVATION. FIELD VERIFY ALL CIRCUITS.
- P6. PANEL SCHEDULE INDICATES PROPOSED CONNECTION AFTER ALL CHANGES HAVE BEEN COMPLETED.

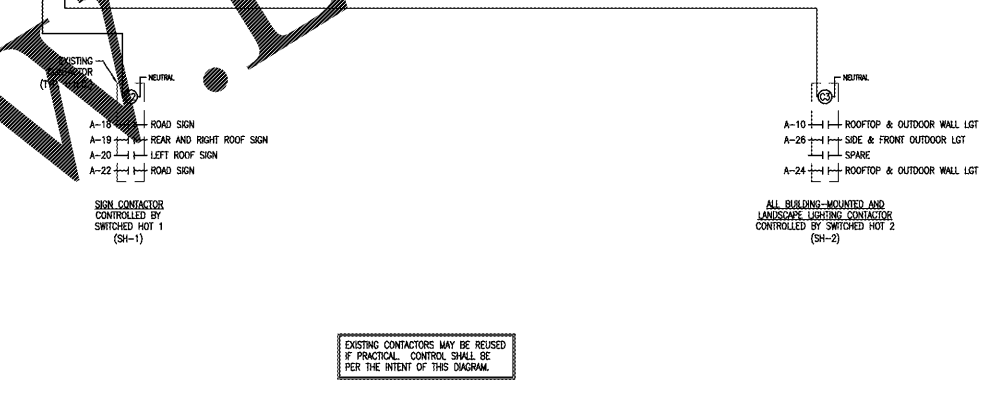
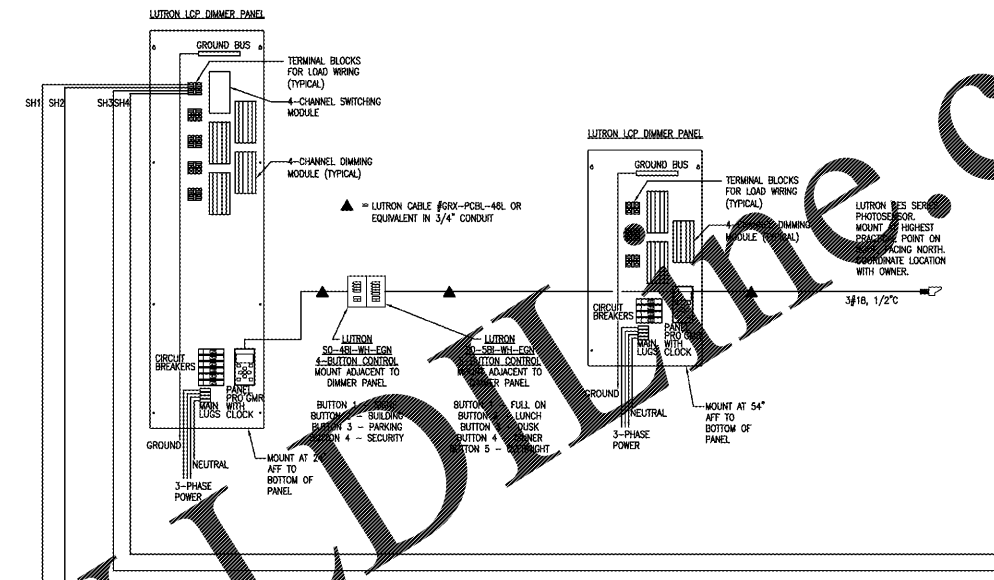
PANEL SCHEDULE NOTES:

- 1 = EXISTING CIRCUIT TO REMAIN AS IS.
- 2 = CIRCUIT SWITCHED OUTPUT NUMBER IN LUTRON CABINET. RE-RUN CIRCUIT THROUGH 4 CHANNEL VA CONTACTOR CONTROLLED BY THIS OUTPUT. REFER TO LUTRON DETAIL SHEET.
- 3 = PANEL CIRCUIT IN PRESENT PANEL SCHEDULE ACCORDING TO ACTUAL LOAD SERVED.
- 4 = EXISTING GREEN EXTERIOR LIGHTING & SIGN CIRCUIT HOMERUNS TO ACHIEVE CONTROL PER LUTRON DETAIL THIS SHEET.
- 5 = OVERLOADED CIRCUIT. FIELD VERIFY LOAD BEING SERVED AND COORDINATE WORK WITH MANUFACTURER OF EQUIPMENT. ADJUST CIRCUIT WIRING AND OVERCURRENT PROTECTION DEVICE AS REQUIRED. IF MULTIPLE LOADS ARE SERVED BY OVERLOADED CIRCUIT, DIVIDE LOADS AND CONNECT EXCESS TO AVAILABLE SPARE CIRCUIT.

1 PANEL SCHEDULES
E1.2
NOT TO SCALE

DIMMER PANEL 'DM1'										
		VOLTAGE		208/120		3 PH 4W		AIC RATING		
FEEDER AMP FEEDS:		60		MANS:		100		MLO		
		FEED:		EXISTING		ENCLOSURE		EXISTING		
CKT NUM & BREAKER	MODULE TYPE	MODULE MAX VA	DIMMER OUTPUT CKT	OUTPUT MAX VA	LOAD DESCRIPTION	LOAD VA	PHASE	REMARKS		
DM1-1	4-Output	1920	SH-1	1200	SWITCHED OUTPUT 1 - SIGNAGE	0	A	EXTERIOR LIGHTING CONTROL. SWITCHED OUTPUT		
20/1	4A		SH-2	1200	SWITCHED OUTPUT 2 - BUILDING LIGHTS	0		EXTERIOR LIGHTING CONTROL. SWITCHED OUTPUT		
			SH-3	1200	SWITCHED OUTPUT 3 - PARKING LOT LIGHTS	0		EXTERIOR LIGHTING CONTROL. SWITCHED OUTPUT		
			SH-4	1200	SWITCHED OUTPUT 4 - SECURITY LYS (DUSK TO DAWN)	0		EXTERIOR LIGHTING CONTROL. SWITCHED OUTPUT		
DM1-2	4-Output	1920	DH1-5	1200	TO GO LIGHT	14	B			
20/1	4A		DH1-6	1200	BAR SOFFIT LIGHTS	130				
			DH1-7	1200	DINING 5 TRACK	180				
DM1-3	4-Output	1920	DH1-8	1200	RESTROOM LIGHTS / MONOPOINTS	260	C			
20/1	4A		DH1-9	1200	BAR STRIP LIGHTS	80				
			DH1-10	1200	HALLWAY RECESSED LIGHTS / MONOPOINTS	100				
			DH1-11	1200	DINING 1, 3 & FAMILY RM TRACK	260				
			DH1-12	1200	SERVICE HALL 1 & 2 RECESSED LIGHTS	90	A			
DM1-4	4-Output	1920	DH1-13	1200	DINING 3 PENDANTS	50				
20/1	4A		DH1-14	1200	DINING 7 & 8 TRACK	140				
			DH1-15	1200	BACK BAR RECESSED LIGHTS	70				
			DH1-16	1200	BAR TRACK	40				
DM1-5	4-Output	1920	DH1-17	1200	PARKY RM CROWN MOULDING	80	B			
20/1	4A		DH1-18	1200	DINING 3 & 4 PENDANT CLUSTER	140				
			DH1-19	1200	DINING 5 PENDANTS	50				
			DH1-20	1200	SPARE	0				
DM1-5 20/1	BKR ONLY	N/A	N/A	N/A	DINING BAR EMERGENCY LIGHTS	0	C	BREAKER ONLY. LOCK-ON		
Connected Load Per Phase			PH A:	1806	PH B:	1806	PH C:	530		
Lighting			HVAC	Motors	Recept	Relief	Kitchen	Misc	Total VA	Amps
Connected VA			1806	0	0	0	0	0	1806	5.0
Demand Factor			1.25	1.00	1.00	1.00	1.00	1.00	2256	6.3
Demand VA			2256	0	0	0	0	0	2256	6.3

DIMMER PANEL 'DM2'										
		VOLTAGE		208/120		3 PH 4W		AIC RATING		
FEEDER AMP FEEDS:		60		MANS:		100		MLO		
		FEED:		EXISTING		ENCLOSURE		EXISTING		
CKT NUM & BREAKER	MODULE TYPE	MODULE MAX VA	DIMMER OUTPUT CKT	OUTPUT MAX VA	LOAD DESCRIPTION	LOAD VA	PHASE	REMARKS		
DM2-1	4-Output	1920	DH2-1	1200	LOUNGE PENDANTS	28	A			
20/1	4A		DH2-2	1200	DINING 4 & 4 TRACK	260				
			DH2-3	1200	DINING 6 TRACK	160				
			DH2-4	1200	DINING 8 & 10 TRACK	130	B			
DM2-2	4-Output	1920	DH2-5	1200	WINE CABINET LIGHTS	80				
20/1	4A		DH2-6	1200	VESTIBULE RECESSED LIGHTS	30				
			DH2-7	1200	LOBBY PENDANT CLUSTER	120				
			DH2-8	1200	DINING 8 PENDANTS	50	C			
			DH2-9	1200	DINING 7 PENDANTS	50				
			DH2-10	1200	LOBBY TRACK / RECESSED LIGHTS	240				
			DH2-11	1200	LOUNGE RECESSED LIGHTS / MONOPOINTS / TRACK	160				
			DH2-12	1200	SPARE	0				
DM2-2 20/1	BKR ONLY	N/A	N/A	N/A	DINING BAR EMERGENCY LIGHTS	0	A	NON-DIM BREAKER ONLY. LOCK-ON		
Connected Load Per Phase			PH A:	578	PH B:	260	PH C:	456		
Lighting			HVAC	Motors	Recept	Relief	Kitchen	Misc	Total VA	Amps
Connected VA			1284	0	0	0	0	0	1284	3.6
Demand Factor			1.25	1.00	1.00	1.00	1.00	1.00	1618	4.5
Demand VA			1618	0	0	0	0	0	1618	4.5



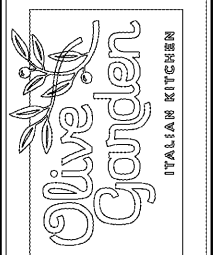
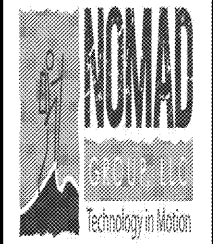
EXISTING CONTACTORS MAY BE REUSED IF PRACTICAL. CONTROL SHALL BE PER THE INTENT OF THIS DIAGRAM.

EXISTING EXTERIOR LIGHTING NOTE
FIELD VERIFY ACTUAL LOADS SERVED BY EACH EXTERIOR LIGHTING CIRCUIT AND DETERMINE BEST SWITCHED OUTPUT TO CONTROL CIRCUIT BASED ON SWITCHED OUTPUT DESCRIPTIONS IN DETAIL THIS SHEET.
LITTLE OR NO INFORMATION IS AVAILABLE ABOUT EXISTING CONTACTORS. CONTROL SCHEME INDICATED IS DIAGRAMATIC ONLY, AND USE OF NEW CONTACTORS HAS BEEN INDICATED FOR COMMUNICATION OF INTENT. FIELD VERIFY LOCAL, COORDINATION, AND CONDITION OF EXISTING CONTACTORS AND REUSE IF PRACTICAL. OTHERWISE, FIELD VERIFY EXACT QUANTITY OF CIRCUITS REQUIRING CONTROL UNDER EACH SWITCHED OUTPUT AND PROVIDE NEW CONTACTORS AS REQUIRED. TYPE AND RATINGS TO MATCH EXISTING, TO ACHIEVE CONTROL PER DETAIL THIS SHEET.

- NOTES:**
1. THE DIMMER PANEL, AND 4-SCENE OR 5-SCENE CONTROLLERS ARE FURNISHED, INSTALLED, AND WIRED BY THE CONTRACTOR.
 2. REFER TO THE DIMMER PANEL INSTALLATION INSTRUCTIONS FOR ADDITIONAL INFORMATION AND REQUIREMENTS.
 3. THE DIMMER PANEL AND CONTROLLER ARE MANUFACTURED BY LUTRON (NO EXCEPTIONS) AND SUPPLIED BY SPECIALTY LIGHTING. CONTACT SPECIALTY LIGHTING AT 860-767-0110 EXT. 221 FOR PROCESSING OF LUTRON EQUIPMENT.
 4. COORDINATE EXACT MOUNTING LOCATION OF DIMMER PANEL WITH OWNER PRIOR TO WORK. OBSERVE ALL NEC REQUIRED CLEARANCES.
 5. COORDINATE EXACT MOUNTING LOCATION OF 4-SCENE OR 5-SCENE DIMMER CONTROLLER WITH OWNER PRIOR TO WORK. PROVIDE ENGRAVED FACEPLATE LABELING EACH BUTTON PER OWNER'S DIRECTION.
 6. CONNECT EMERGENCY LIGHTING AHEAD OF UNSWITCHED HOT CIRCUIT BREAKER LOAD TERMINALS. PROVIDE LOCK-ON DEVICE FOR DEDICATED EMERGENCY CIRCUIT BREAKER. LABEL ALL CIRCUITS SERVING EMERGENCY LIGHTING PER NEC.
 7. UNLESS NOTED OTHERWISE, USE EXISTING CIRCUITS AND LIGHTING CONTACTORS WHERE POSSIBLE. PROVIDE WIRING, ADDITIONAL CONTACTORS, AND OTHER COMPONENTS AS REQUIRED TO ENSURE COMPLETE INTEGRATION OF NEW ITEMS INTO LIGHTING CONTROL SYSTEM FOR ALL LIGHTS, SIGNS, AND OTHER ITEMS REQUIRING CONTROL. PER OWNER. FIELD VERIFY AND COORDINATE EXACT REQUIREMENTS. NEW COMPONENTS SHALL BE COMPATIBLE WITH EXISTING.
 8. CONNECT ALL EXISTING AND NEW CONTROLLED EXTERIOR LOADS VIA SWITCHING MODULE IN LUTRON PANEL. PROVIDE WIRING AND CONNECTIONS REQUIRED TO ACCOMPLISH CONTROL AS DESCRIBED IN THIS DETAIL.
 9. CONNECT NEW AND EXISTING EXTERIOR EMERGENCY LIGHTING AHEAD OF CONTACTORS.
 10. ALL LIGHTING CONTACTORS SHALL BE: N.O., ELED, HELED, 120V COIL, 30A, IN NAME 1 ENCLOSURE (TYP.); POLES AS REQUIRED WITH TWO (2) SPARE. CONTRACTOR TO REPLACE EXISTING CONTACTORS AS NECESSARY TO ACCOMPLISH THIS.

3 LUTRON DIMMING & EXTERIOR LIGHTING CONTROL SYSTEM DETAIL
E1.2
NOT TO SCALE

Comments to Owner
NOMAD RECOMMENDATIONS 03/05/2018



Issue Date: 05-03-2018

REVISION INFORMATION	
1	
2	
3	
4	
5	
6	
7	
8	

Restaurant #: 1289

P1B (MEDIUM)
1903 N ROAN STREET

JOHNSON CITY, TN

ELECTRICAL PANEL SCHEDULES, RISER, & DETAILS

E1.2

THESE DRAWINGS AND SPECIFICATIONS REMAIN THE PROPERTY OF THE DESIGN PROFESSIONAL. AUTHORIZED COPIES OF THESE DRAWINGS AND SPECIFICATIONS MAY BE MADE FOR THE CLIENT ONLY FOR THEIR USE AND FOR OCCUPYING THE PROJECT FOR WHICH THEY WERE PREPARED. AND NOT FOR THE CONSTRUCTION OF ANY OTHER PROJECT. NO PARTS OF THESE DRAWINGS ARE TO BE REPRODUCED OR TRANSMITTED IN ANY FORM OR BY ANY MEANS WITHOUT THE WRITTEN PERMISSION OF THE DESIGN PROFESSIONAL.