

2 EXISTING ELECTRICAL RISER (PARTIAL)
E1.2 NOT TO SCALE

EXISTING ELECTRICAL RISER KEYED NOTES:

- EXISTING FEEDER TO REMAIN AS IS. NO WORK REQUIRED. SHOWN FOR INFORMATION ONLY.
- EXISTING EQUIPMENT TO REMAIN.
- CONNECT NEW ITEMS TO OR REMOVE EXISTING ITEMS FROM EXISTING CIRCUITS IN THIS PANEL PER PLAN AND SCHEDULES.
- EXISTING PANEL 'A' FED FROM 200A, 3-POLE FUSED DISCONNECT WITH 200A FUSES IN 'MS'.
- PROVIDE NEW LUTRON DIMMER SYSTEM PER DETAIL THIS SHEET. FEED FROM EXISTING 60A, 3-POLE BREAKER IN PANEL 'A' AND RECONNECT TO EXISTING FEEDER.

NOTE: PROVIDE WORK AND MATERIALS AS DEPICTED IN THESE DRAWINGS. IF ANY ADDITIONAL SYSTEMS (LIGHTING IN AREAS NOT BEING RENOVATED, HVAC CONTROLS, SECURITY, ETC.) THAT ARE NOT DIRECTLY AFFECTED BY WORK INDICATED, CONTRACTOR SHALL NOTIFY OWNER BEFORE PROCEEDING AND INCLUDE WORK TO RESTORE AFFECTED SYSTEMS TO PREVIOUS CONDITION.

NOTE: THIS RENOVATION RESULTS IN A NET LOAD REDUCTION; THE NEW LOAD ADDED IS SMALLER THAN THE EXISTING LOAD REMOVED.

PANEL A		VOLTAGE	208/120	3 PH	4W	MANS:	225	MLO	AIC RATING:	EXISTING	REMARKS:
		FEEDER AMP	200			FEED:	EXISTING	ENCLOSURE	MOUNTING:	EXISTING	FIELD VERIFY EXISTING CIRCUITS
BKR	NOTE	LOAD DESCRIPTION	VA	CKT	PHASE	CKT	VA	LOAD DESCRIPTION	NOTE	BKR	
20/1	E	KITCHEN LIGHTS / CASH DASH	948	1	A	2	1000	BAR PLUG/MOLD		3	20/1
20/1	E	KITCHEN LIGHTS	744	3	B	4	500	TO GO COUNTER CONV		3	20/1
20/1	E	BAR TWO-CABLE CONV. OUTLETS	1000	6	C	6	300	LOBBY TWO-CABLE BOXES		3	20/1
20/1	E	KITCHEN LIGHTS	528	7	A	8	500	LOBBY TWO-CABLE BOXES		3	20/1
20/1	E	KITCHEN LIGHTS	648	9	B	10	2208	ROOFTOP & OUTDOOR WALL LGT	2,SH2	20/1	
20/1	E	BAR PRINTERS	84	11	C	12	36	EXISTING LOAD		E	20/1
20/1	E	OFFICE LIGHTS & BREAK ROOM	240	13	A	14	36	CONTRACTOR		E	20/1
20/1	E	DINING RM3 WINE COOLER	500	15	B	16	500	DINING RM4 WINE COOLER		3	20/1
20/1	E	ROOFTOP RECEPTACLE	24	17	C	18	1500	ROAD SIGN		2,SH1	20/1
20/1	E	REAR AND RIGHT ROOF SIGN	1512	19	A	20	972	LEFT ROOF SIGN		2,SH1	20/1
20/1	E	WOMEN'S BATHROOM	360	21	B	22	1116	ROAD SIGN		2,SH1	30/1
20/1	E	WOMEN'S BATHROOM	324	23	C	24	2340	ROOFTOP & OUTDOOR WALL LGT	2,SH2	30/1	
20/1	E	EXISTING LOAD	1000	25	A	26	1440	SIDE & FRONT OUTDOOR LGT	2,SH2	20/1	
20/2	E	POLE LIGHTS AND ROOFTOP LGTS	1488	27	B	28	540	POLE AND ROOFTOP LGTS	2,SH3	20/2	
			768	29	C	30	504				
60/3	E	DIMMER PANEL 'DM2'	576	31	A	32	300	DIMMER PANEL 'DM1'		3	60/3
			290	33	B	34	978				
			456	35	C	36	530				
		SPACE	0	37	A	38	0	SPACE			
		SPACE	0	39	B	40	0	SPACE			
		SPACE	0	41	C	42	0	SPACE			
Connected Load Per Phase			PH A:	9054	PH B:	9840	PH C:	8096			
Connected VA			Lighting	HVAC	Motors	Recept	Relief	Kitchen	Misc	Total VA	Amps
Demand Factor			2.2460	0	0	2500	1000	0	1000	29990	74.8
Demand VA			1.25	1.00	1.00	NEC	1.00	0.65	1.00	32575	80.4
Demand VA			28075	0	0	2500	1000	0	1000		

EXISTING PANEL GENERAL NOTES:

- VERIFY ALL CIRCUITS ON EXISTING PANELS. ADJUST CIRCUITING AS REQUIRED TO MEET DESIGN INTENT OF DRAWINGS. FOR ANY VACATED CIRCUITS, REMOVE CONDUIT AND WIRING BACK TO PANEL, TURN BREAKER OFF, AND MARK BREAKER AS 'SPARE'. FOR EXISTING CIRCUITS MISLABELED BUT CONNECTED TO EXISTING LOAD REQUIRED TO REMAIN, FIELD DETERMINE LOAD AND PROVIDE APPROPRIATE DESCRIPTION IN PANEL DIRECTORY.
- PROVIDE NEW TYPEWRITTEN PANEL DIRECTORY TO REFLECT NEW CONDITIONS UPON COMPLETION OF WORK DESCRIBED IN THESE DRAWINGS. CLEAN OFF/REMOVE/ERASE ALL HANDWRITTEN LABELING ON PANEL COVER. CIRCUIT DESCRIPTION SHALL EXIST ON PANEL DIRECTORY ONLY.
- RELEASE EXISTING CIRCUIT BREAKERS WHERE POSSIBLE. PROVIDE NEW BREAKERS AS REQUIRED, TYPE, VOLTAGE RATING, AND AIC RATING TO MATCH EXISTING.
- CLEAN PANELBOARD, AND REPAIR OR REPLACE ANY MISSING OR DAMAGED COMPONENTS ON EXISTING PANELBOARDS AND DIMMING EQUIPMENT. FIELD VERIFY AND CORRECT EXISTING REQUIREMENTS WITH OWNER.
- EXISTING CIRCUIT DATA SHOWN IS TAKEN FROM EXISTING FACILITY DRAWINGS AND/OR FIELD OBSERVATION. FIELD VERIFY ALL CIRCUITS.
- PANEL SCHEDULE INDICATES PROPOSED CONNECTION AFTER ALL CHANGES HAVE BEEN COMPLETED.

PANEL SCHEDULE NOTES:

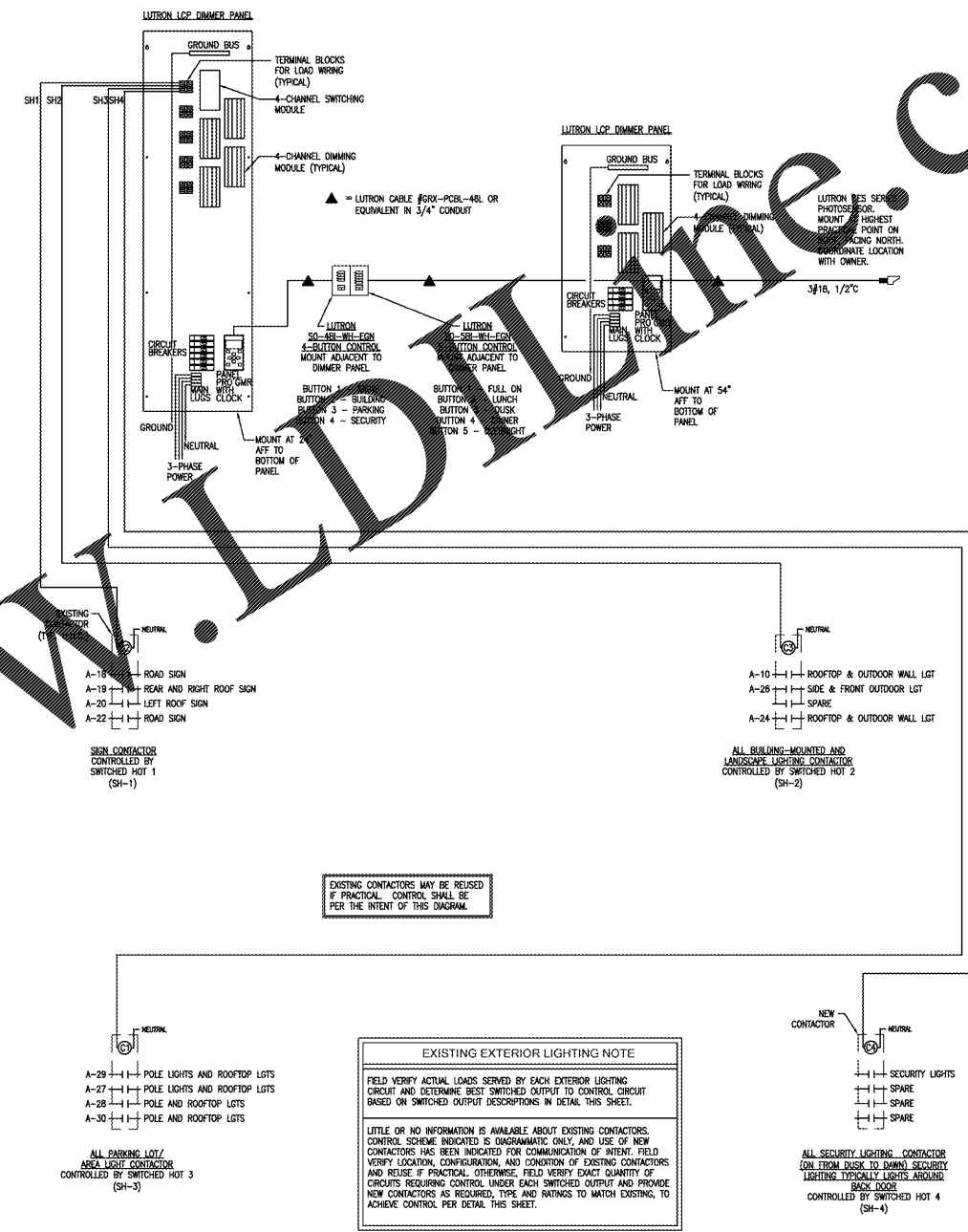
- EXISTING CIRCUIT TO REMAIN AS IS.
- INDICATES SWITCHED OUTPUT NUMBER IN LUTRON CABINET. RE-RUN CIRCUIT THROUGH VOLTAGE CONTROLLED BY THIS OUTPUT. REFER TO LUTRON DETAIL SHEET.
- 1 = PANEL CIRCUIT IN RESIDENT PANEL SCHEDULE ACCORDING TO ACTUAL LOAD SERVED.
- 2 = FIELD VERIFY OVERSEEN EXTERIOR LIGHTING & SIGN CIRCUIT HOMERUNS TO ACHIEVE CONTROL PER LUTRON DETAIL THIS SHEET.
- 4 = PROVIDE NEW CIRCUIT BREAKER.
- 5 = OVERLOADED CIRCUIT. FIELD VERIFY LOAD BEING SERVED AND COORDINATE W/OP WITH MANUFACTURER OF EQUIPMENT. ADJUST CIRCUIT WIRING AND OVERCURRENT PROTECTION DEVICE AS REQUIRED. IF MULTIPLE LOADS ARE SERVED BY OVERLOADED CIRCUIT, DIVIDE LOADS AND CONNECT EXCESS TO AVAILABLE SPARE CIRCUIT.

1 PANEL SCHEDULES
E1.2 NOT TO SCALE

DIMMER PANEL 'DM1'		VOLTAGE	208/120	3 PH	4W	MANS:	100	MLO	AIC RATING:	10K	REMARKS:
		FEEDER AMP	60			FEED:	TOP	ENCLOSURE	MOUNTING:	FLUSH	NEMA 1
CKT NUM & BREAKER	MODULE TYPE	MODULE MAX VA	DIMMER OUTPUT	OUTPUT MAX VA	LOAD DESCRIPTION	LOAD VA	PHASE				
DM1-1	4-Output	1920	SH-1	1200	SWITCHED OUTPUT 1 - SIGNAGE	0	A				EXTERIOR LIGHTING CONTROL, SWITCHED OUTPUT
20/1	4A		SH-2	1200	SWITCHED OUTPUT 2 - BUILDING LIGHTS	0					EXTERIOR LIGHTING CONTROL, SWITCHED OUTPUT
			SH-3	1200	SWITCHED OUTPUT 3 - PARKING LIGHTS	0					EXTERIOR LIGHTING CONTROL, SWITCHED OUTPUT
			SH-4	1200	SWITCHED OUTPUT 4 - SECURITY LYS (DUSK TO DAWN)	0					EXTERIOR LIGHTING CONTROL, SWITCHED OUTPUT
DM1-2	4-Output	1920	DH1-5	1200	TO GO LIGHT	14	B				
20/1	4A		DH1-6	1200	BAR SOFFIT LIGHTS	130					
			DH1-7	1200	DINING 5 TRACK	180					
			DH1-8	1200	RESTROOM LIGHTS / MONOPOINTS	260					
DM1-3	4-Output	1920	DH1-9	1200	BAR STRIP LIGHTS	80	C				
20/1	4A		DH1-10	1200	HALLWAY RECESSED LIGHTS / MONOPOINTS	100					
			DH1-11	1200	DINING 1, 3 & FAMILY RM TRACK	260					
			DH1-12	1200	SERVICE HALL 1 & 2 RECESSED LIGHTS	90					
DM1-4	4-Output	1920	DH1-13	1200	DINING 7 PENDANTS	50	A				
20/1	4A		DH1-14	1200	DINING 7 & 8 TRACK	140					
			DH1-15	1200	BACK BAR RECESSED LIGHTS	70					
			DH1-16	1200	BAR TRACK	40					
DM1-5	4-Output	1920	DH1-17	1200	PARTY RM CHANDELER	180	B				
20/1	4A		DH1-18	1200	DINING 3 & 4 PENDANT CLUSTER	180					
			DH1-19	1200	DINING 5 PENDANTS	50					
			DH1-20	1200	SPARE	0					
DM1-5 20/1	BKR ONLY	N/A	N/A	N/A	DINING BAR EMERGENCY LIGHTS	0	C				BREAKER ONLY, LOCK-ON
Connected Load Per Phase			PH A:	1806	PH B:	2298	PH C:	530			
Connected VA			Lighting	HVAC	Motors	Recept	Relief	Kitchen	Misc	Total VA	Amps
Demand Factor			1.25	1.00	0	0	0	0	0	1806	5.0
Demand VA			2298	0	0	0	0	0	0	2298	6.3

DIMMER PANEL 'DM2'		VOLTAGE	208/120	3 PH	4W	MANS:	100	MLO	AIC RATING:	10K	REMARKS:
		FEEDER AMP	60			FEED:	TOP	ENCLOSURE	MOUNTING:	FLUSH	NEMA 1
CKT NUM & BREAKER	MODULE TYPE	MODULE MAX VA	DIMMER OUTPUT	OUTPUT MAX VA	LOAD DESCRIPTION	LOAD VA	PHASE				
DM2-1	4-Output	1920	DH2-1	1200	LOUNGE PENDANTS	29	A				
20/1	4A		DH2-2	1200	DINING 6 & 4 TRACK	260					
			DH2-3	1200	DINING 6 TRACK	160					
			DH2-4	1200	DINING 8 & 10 TRACK	150					
DM2-2	4-Output	1920	DH2-5	1200	WINE CABINET LIGHTS	80	B				
20/1	4A		DH2-6	1200	VESTIBULE RECESSED LIGHTS	30					
			DH2-7	1200	LOBBY PENDANT CLUSTER	120					
			DH2-8	1200	DINING 8 PENDANTS	80					
			DH2-9	1200	DINING 7 PENDANTS	50					
			DH2-10	1200	LOBBY TRACK / RECESSED LIGHTS	240	C				
			DH2-11	1200	LOUNGE RECESSED LIGHTS / MONOPOINTS / TRACK	160					
			DH2-12	1200	SPARE	0					
DM2-2 20/1	BKR ONLY	N/A	N/A	N/A	DINING BAR EMERGENCY LIGHTS	0	A				NON-DIM BREAKER ONLY, LOCK-ON
Connected Load Per Phase			PH A:	578	PH B:	260	PH C:	456			
Connected VA			Lighting	HVAC	Motors	Recept	Relief	Kitchen	Misc	Total VA	Amps
Demand Factor			1.25	1.00	0	0	0	0	0	1294	3.6
Demand VA			1618	0	0	0	0	0	0	1618	4.5

3 LUTRON DIMMING & EXTERIOR LIGHTING CONTROL SYSTEM DETAIL
E1.2 NOT TO SCALE

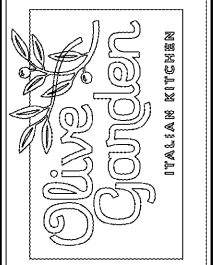


EXISTING CONTACTORS MAY BE REUSED IF PRACTICAL. CONTROL SHALL BE PER THE INTENT OF THIS DIAGRAM.

EXISTING EXTERIOR LIGHTING NOTE

FIELD VERIFY ACTUAL LOADS SERVED BY EACH EXTERIOR LIGHTING CIRCUIT AND DETERMINE BEST SWITCHED OUTPUT TO CONTROL CIRCUIT BASED ON SWITCHED OUTPUT DESCRIPTIONS IN DETAIL THIS SHEET.

LITTLE OR NO INFORMATION IS AVAILABLE ABOUT EXISTING CONTACTORS. CONTACTOR SCHEME INDICATED IS DIAGRAMMATIC ONLY, AND USE OF NEW CONTACTORS HAS BEEN INDICATED FOR COMMUNICATION OF INTENT. FIELD VERIFY LOCAL, COORDINATE, AND CONDITION OF EXISTING CONTACTORS AND REUSE IF PRACTICAL. OTHERWISE, FIELD VERIFY EXACT QUANTITY OF CIRCUITS REQUIRING CONTROL UNDER EACH SWITCHED OUTPUT AND PROVIDE NEW CONTACTORS AS REQUIRED, TYPE AND RATINGS TO MATCH EXISTING, TO ACHIEVE CONTROL PER DETAIL THIS SHEET.



Issue Date: 05-03-2018

REVISION INFORMATION	
1	
2	
3	
4	
5	
6	
7	
8	

Restaurant #: 1289

P1B (MEDIUM)
1903 N ROAN STREET

JOHNSON CITY, TN

ELECTRICAL PANEL SCHEDULES, RISER, & DETAILS

E1.2

THESE DRAWINGS AND SPECIFICATIONS REMAIN THE PROPERTY OF THE DESIGN PROFESSIONAL. UNAUTHORIZED COPIES OF THESE DRAWINGS AND SPECIFICATIONS RETAINED BY THE CLIENT MAY BE UTILIZED ONLY FOR THEIR USE AND FOR OCCUPYING THE PROJECT FOR WHICH THEY WERE PREPARED, AND NOT FOR THE CONSTRUCTION OF ANY OTHER PROJECT. UNAUTHORIZED REPRODUCTION OF THESE DRAWINGS IS STRICTLY PROHIBITED.

DEVITA architects
 ARCHITECTS PROJECT #:
 17-0357

DEVITA architects
 ARCHITECTS PROJECT #:
 17-0357

NOT A CERTIFIED DOCUMENT
 This document originally issued and sealed by Peter Basia, P.E., Tennessee License No. 120550 on 05-03-2018. This medium shall not be considered a certified document.

DEVITA architects
 1903 N ROAN STREET
 JOHNSON CITY, TN 37601
 (615) 926-1111
 www.devitaarchitects.com