

2 EXISTING ELECTRICAL RISER (PARTIAL)
E1.2 NOT TO SCALE

EXISTING ELECTRICAL RISER KEYED NOTES:

- EXISTING FEEDER TO REMAIN AS IS. NO WORK REQUIRED. SHOWN FOR INFORMATION ONLY.
- EXISTING EQUIPMENT TO REMAIN.
- CONNECT NEW ITEMS TO OR REMOVE EXISTING ITEMS FROM EXISTING CIRCUITS IN THIS PANEL PER PLAN AND SCHEDULES.
- EXISTING PANEL 'A' FED FROM 200A, 3-POLE FUSED DISCONNECT WITH 200A FUSES IN 'M'.
- PROVIDE NEW LUTRON DIMMER SYSTEM PER DETAIL THIS SHEET. FEED FROM EXISTING 60A, 3-POLE BREAKER IN PANEL 'A' AND RECONNECT TO EXISTING FEEDER.

NOTE: PROVIDE WORK AND MATERIALS AS DEPICTED IN THESE DRAWINGS. IF ANY ADDITIONAL SYSTEMS (LIGHTING IN AREAS NOT BEING RENOVATED, HVAC CONTROLS, SECURITY, ETC.) THAT ARE NOT DIRECTLY INCLUDED IN THE SCOPE OF THIS WORK ARE AFFECTED BY WORK INDICATED, CONTRACTOR SHALL NOTIFY OWNER BEFORE PROCEEDING AND INCLUDE WORK TO RESTORE AFFECTED SYSTEMS TO PREVIOUS CONDITION.

NOTE: THIS RENOVATION RESULTS IN A NET LOAD REDUCTION. THE NEW LOAD ADDED IS SMALLER THAN THE EXISTING LOAD REMOVED.

PANEL A		VOLTAGE	200/120	3 PH	4W	MANS. 226		MLO	AIC RATING	EXISTING	REMARKS
BKR	NOTE	LOAD DESCRIPTION	VA	CKT	PHASE	CKT	VA	LOAD DESCRIPTION	NOTE	BKR	FIELD VERIFY EXISTING CIRCUITS
20/1	E	NIGHT LIGHTS & EXIT SIGNS	492	1	A	2	370	DIMMER PANEL DM1	3.4	60/3	
20/1	E	KITCHEN LIGHTS	48	3	B	4	870				
20/1	E	KITCHEN LIGHTS	50	5	C	6	500				
20/1	E	KITCHEN LIGHTS	552	7	A	8	828	DIMMER PANEL DM2	3.4	60/3	
20/1	E	KITCHEN LIGHTS	444	9	B	10	340				
20/1	E	SERVICE AREA LVS	254	11	C	12	480				
20/1	E	OFFICE LIGHTS	408	13	A	14	462	ROOF LIGHTS	2.5H2	20/1	
20/1	3	DINING RM4 WINE COOLER	500	15	B	16	660	ROOF LIGHTS	2.5H2	20/1	
20/1	2.5H2	ROOF RECEPT & LVS	228	17	C	18	588	ROOF LIGHTS	2.5H2	20/1	
20/1	3	LOBBY TV/CABLE BOXES	500	19	A	20	900	LANDSCAPE LVS	2.5H2	20/1	
20/1	2.5H1	BUILDING SIGN	650	21	B	22	1272	LANDSCAPE LVS	2.5H2	20/1	
20/1	2.5H1	BUILDING SIGN	456	23	C	24	300	PYLON SIGN	2.5H1	20/1	
20/1	2.5H2	NORTH EXTERIOR LVS	384	25	A	26	438	PYLON SIGN	2.5H1	20/1	
20/1	3	DINING RM4 WINE COOLER	500	27	B	28	1000	PYLON SIGN	2.5H1	20/1	
20/1	2.5H2	FRONT EXTERIOR LVS	468	29	C	30	420	PARKING LOT LVS	2.5H3	20/1	
20/1	E	WOMEN'S RESTROOM	600	31	A	32	636	PARKING LOT LVS	2.5H3	20/1	
20/1	E	MEN'S RESTROOM	528	33	B	34	456	PARKING LOT LVS	2.5H3	20/1	
20/1	E	SERVICE AREALS	204	35	C	36	444	PARKING LOT LVS	2.5H3	20/1	
20/1	3	BAR TV/CABLE/CONV OUTLETS	1000	37	A	38	408	EXISTING LOAD	E	20/1	
20/1	3	TO GO COUNTER CONV	500	39	B	40	1212	EXISTING LOAD	E	20/1	
20/1	3	BAR PLUG/HELD	1000	41	C	42	500	LOBBY TV/CABLE BOXES	E	20/1	
Connected Load Per Phase			PH A:	7778	PH B:	6990	PH C:	5832			
Connected VA			Lighting	HVAC	Motors	Recept	Refrig	Kitchen	Misc	Total VA	Amps
Demand Factor			1.25	1.00	1.00	NEC	1.00	0.65	1.00	22600	62.7
Demand VA			22625	0	0	2500	1000	0	1000	27125	75.3

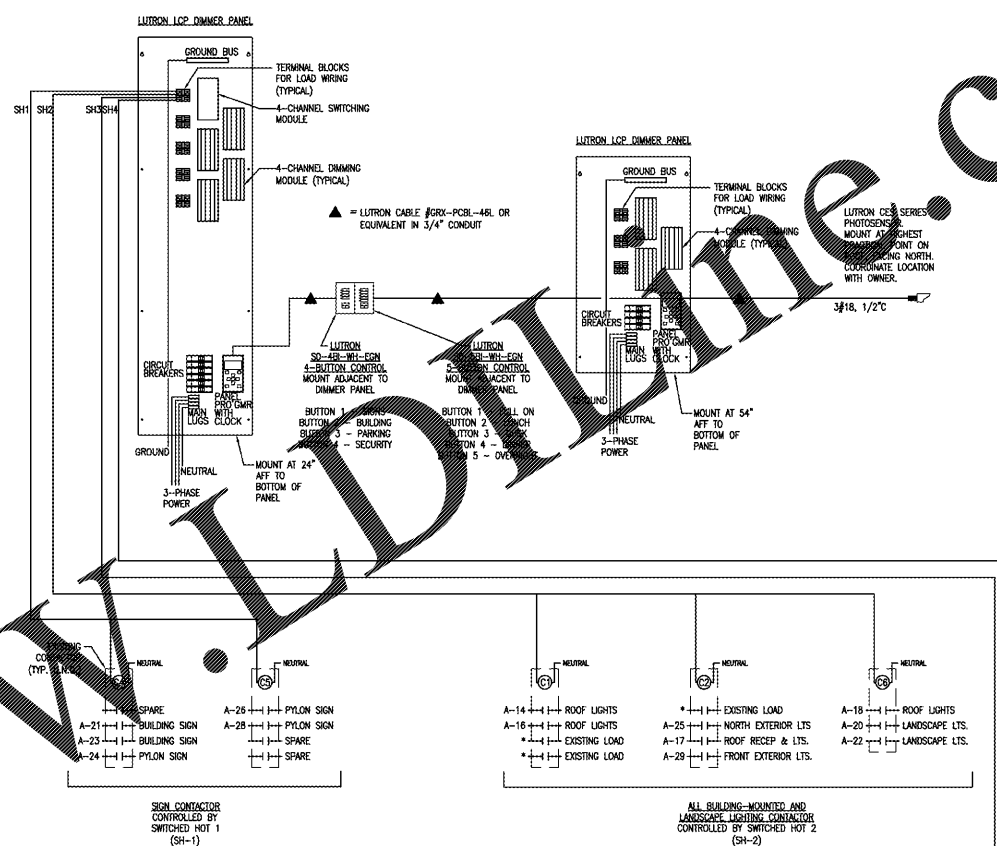
DIMMER PANEL 'DIM1' (LUTRON LCP)		VOLTAGE	208/120	3 PH	4W	MANS. 100		MLO	AIC RATING	10K	
CKT NUM & BREAKER	MODULE TYPE	MODULE MAX VA	DIMMER OUTPUT CKT	OUTPUT MAX VA	LOAD DESCRIPTION	LOAD VA	PHASE	ENCLOSURE	FLUSH	NEMA 1	
DM1-1	4-Output 4U	1920	SH-1	1200	SWITCHED OUTPUT 1 - SIGNAGE	0	A				
20/1			SH-2	1200	SWITCHED OUTPUT 2 - BUILDING LIGHTS	0					
			SH-3	1200	SWITCHED OUTPUT 3 - PARKING LOT LIGHTS	0					
			SH-4	1200	SWITCHED OUTPUT 4 - SECURITY LVS (DUSK TO DAWN)	0					
DM1-2	4-Output 4A	1920	DH1-5	1200	TO-GO LIGHT	14	B				
20/1			DH1-6	1200	BAR SOFFIT LIGHTS	130					
			DH1-7	1200	DINING 5 TRACK	210					
			DH1-8	1200	RESTROOM LIGHTS	220					
DM1-3	4-Output 4A	1920	DH1-9	1200	BAR STROBE LIGHTS	80	C				
20/1			DH1-10	1200	HALLWAY RECESSED LIGHTS/MONOPOLTS	100					
			DH1-11	1200	DINING 1 & 3 TRACK	220					
			DH1-12	1200	SERVICE HALL 1 & 2 RECESSED LIGHTS	100					
DM1-4	4-Output 4A	1920	DH1-13	1200	DINING 7 PENDANTS	50	A				
20/1			DH1-14	1200	DINING 7 & 9 TRACK RECESSED LIGHT	150					
			DH1-15	1200	BACK BAR RECESSED LIGHTS	70					
			DH1-16	1200	BAR TRACK	100					
DM1-5	4-Output 4A	1920	DH1-17	1200	DINING 1 PENDANTS	50	B				
20/1			DH1-18	1200	DINING 3 & 4 PENDANT CLUSTER	24					
			DH1-19	1200	SPARE	0					
			DH1-20	1200	SPARE	0					
DM1-8	BKR ONLY	N/A	N/A	N/A	DINING BAR EMERGENCY LIGHTS	0	C				
Connected Load Per Phase			PH A:	3	PH B:	500	PH C:	500			
Connected VA			Lighting	HVAC	Motors	Recept	Refrig	Kitchen	Misc	Total VA	Amps
Demand Factor			1.25	1.00	1.00	NEC	1.00	0.65	1.00	1740	4.8
Demand VA			2175	0	0	2500	1000	0	1000	2175	6.0

DIMMER PANEL 'DIM2' (LUTRON LCP)		VOLTAGE	208/120	3 PH	4W	MANS. 100		MLO	AIC RATING	10K	
CKT NUM & BREAKER	MODULE TYPE	MODULE MAX VA	DIMMER OUTPUT CKT	OUTPUT MAX VA	LOAD DESCRIPTION	LOAD VA	PHASE	ENCLOSURE	FLUSH	NEMA 1	
DM2-1	4-Output 4A	1920	DH2-1	1200	LOBBY PENDANTS	230	A				
20/1			DH2-2	1200	DINING 2 & 4 TRACK	210					
			DH2-3	1200	DINING 6 TRACK	210					
			DH2-4	1200	DINING 8 & 10 TRACK RECESSED LIGHT	160					
DM2-2	4-Output 4A	1920	DH2-5	1200	WINE CABINET LIGHTS	80	B				
20/1			DH2-6	1200	RESTROOM RECESSED LIGHTS/MONOPOLTS	110					
			DH2-7	1200	LOBBY PENDANT CLUSTER	120					
			DH2-8	1200	DINING 8 PENDANTS	50					
DM2-3	4-Output 4A	1920	DH2-9	1200	DINING 2 PENDANT	100	C				
20/1			DH2-10	1200	LOBBY TRACK	250					
			DH2-11	1200	LOUNGE RECESSED LIGHTS/MONOPOLTS/TRACK	180					
			DH2-12	1200	SPARE	0					
DM2-4	BKR ONLY	N/A	N/A	N/A	DINING BAR EMERGENCY LIGHTS	0	A				
Connected Load Per Phase			PH A:	628	PH B:	340	PH C:	490			
Connected VA			Lighting	HVAC	Motors	Recept	Refrig	Kitchen	Misc	Total VA	Amps
Demand Factor			1.25	1.00	1.00	NEC	1.00	0.65	1.00	1428	4.0
Demand VA			1785	0	0	2500	1000	0	1000	1785	5.0

PANEL SCHEDULE NOTES:

- EXISTING CIRCUIT TO REMAIN AS IS.
- LOADS SWITCHED OUTPUT NUMBER IN LUTRON CABINET. RE-ROUTE CIRCUIT THROUGH VA BREAKER CONTROLLED BY THIS OUTPUT. REFER TO LUTRON DETAIL THIS SHEET.
- REMOVE CIRCUIT IN EXISTING PANEL SCHEDULE ACCORDING TO ACTUAL LOAD SERVED.
- REMOVE WIRING OR NEW EXTERIOR LIGHTING & SIGN CIRCUIT WIRING TO ACHIEVE CONTROL PER LUTRON DETAIL THIS SHEET.
- NEW ITEM ADDED TO EXISTING ITEM REMOVED FROM THIS CIRCUIT. REVERSE CIRCUIT LOAD AND/OR DESCRIPTION.
- OVERLOADED CIRCUIT. FIELD VERIFY LOAD BEING SERVED AND COORDINATE W/COMP WITH MANUFACTURER OF EQUIPMENT. ADJUST CIRCUIT WIRING AND OVERCURRENT PROTECTION DEVICE AS REQUIRED. IF MULTIPLE LOADS ARE SERVED BY OVERLOADED CIRCUIT, DIVIDE LOADS AND CONNECT EXCESS TO AVAILABLE SPARE CIRCUIT.

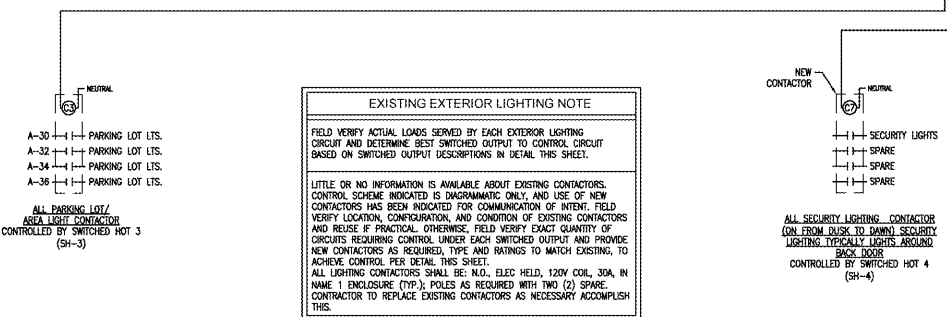
1 PANEL SCHEDULES
E1.2 NOT TO SCALE



EXISTING PANEL GENERAL NOTES:

- VERIFY ALL CIRCUITS ON EXISTING PANELS. ADJUST CIRCUITING AS REQUIRED TO MEET DESIGN INTENT OF DRAWINGS. FOR ANY VACATED CIRCUITS, REMOVE CONDUIT AND WIRING BACK TO PANEL, TURN BREAKER OFF, AND MARK BREAKER AS 'SPARE'. FOR EXISTING CIRCUITS MISLABELED BUT CONNECTED TO EXISTING LOADS REQUIRED TO REMAIN, FIELD DETERMINE LOAD AND PROVIDE APPROPRIATE DESCRIPTION IN PANEL DIRECTORY.
- PROVIDE NEW TYPEWRITEN PANEL DIRECTORY TO REFLECT NEW CONDITIONS UPON COMPLETION OF WORK DESCRIBED IN THESE DRAWINGS. CLEAN OFF/REMOVE/ERASE ALL HANDWRITTEN LABELING ON PANEL COVER. CIRCUIT DESCRIPTION SHALL EXIST ON PANEL DIRECTORY ONLY.
- REUSE EXISTING CIRCUIT BREAKERS WHERE POSSIBLE. PROVIDE NEW BREAKERS AS REQUIRED, TYPE, VOLTAGE RATING, AND AIC RATING TO MATCH EXISTING.
- CLEAN PANELBOARD, AND REPAIR OR REPLACE ANY MISSING OR DAMAGED COMPONENTS ON EXISTING PANELBOARDS AND DRAWING EQUIPMENT. FIELD VERIFY AND COORDINATE ALL REQUIREMENTS WITH OWNER.
- EXISTING CIRCUIT DATA SHOWN IS TAKEN FROM EXISTING FACILITY DIAGRAMS AND/OR FIELD OBSERVATION. FIELD VERIFY ALL CIRCUITS.
- PANEL SCHEDULE INDICATES PROPOSED CONDITIONS AFTER ALL CHANGES HAVE BEEN COMPLETED.

* = FIELD VERIFY EXISTING CIRCUIT AND LOAD SERVED AND CONNECT TO APPROPRIATE CONTROLLED CONTACTOR



EXISTING EXTERIOR LIGHTING NOTE

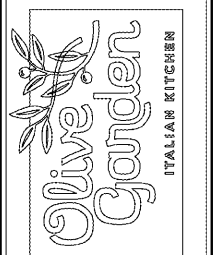
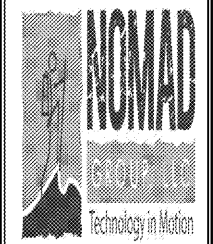
FIELD VERIFY ACTUAL LOADS SERVED BY EACH EXTERIOR LIGHTING CIRCUIT AND DETERMINE BEST SWITCHED OUTPUT TO CONTROL CIRCUIT BASED ON SWITCHED OUTPUT DESCRIPTIONS IN DETAIL THIS SHEET.

LITTLE OR NO INFORMATION IS AVAILABLE ABOUT EXISTING CONTACTORS. CONTROL SCHEME INDICATED IS DIAGRAMMATIC ONLY, AND USE OF NEW CONTACTORS HAS BEEN INDICATED FOR COMMUNICATION OF INTENT. FIELD VERIFY LOCATION, CONFIGURATION, AND CONDITION OF EXISTING CONTACTORS AND REUSE IF PRACTICAL. OTHERWISE, FIELD VERIFY EXACT QUANTITY OF CIRCUITS REQUIRING CONTROL UNDER EACH SWITCHED OUTPUT AND PROVIDE NEW CONTACTORS AS REQUIRED, TYPE AND RATINGS TO MATCH EXISTING, TO ACHIEVE CONTROL PER DETAIL THIS SHEET.

ALL LIGHTING CONTACTORS SHALL BE: N.O., ELEC HELD, 120V COIL, 30A, IN NAME 1 ENCLOSURE (TYP.); POLES AS REQUIRED WITH TWO (2) SPARE. CONTRACTOR TO REPLACE EXISTING CONTACTORS AS NECESSARY ACCOMPLISH THIS.

- NOTES:**
- THE DIMMER PANEL AND 4-SCENE OR 5-SCENE CONTROLLERS ARE FURNISHED, INSTALLED, AND WIRED BY THE CONTRACTOR.
 - REFER TO THE DIMMER PANEL INSTALLATION INSTRUCTIONS FOR ADDITIONAL INFORMATION AND REQUIREMENTS.
 - THE DIMMER PANEL AND CONTROLLER ARE MANUFACTURED BY LUTRON (NO EXCEPTIONS) AND SUPPLIED BY SPECIALTY LIGHTING. CONTACT SPECIALTY LIGHTING AT 860-767-0110 EXT. 221 FOR PROCESSING OF LUTRON EQUIPMENT.
 - COORDINATE EXACT MOUNTING LOCATION OF DIMMER PANEL WITH OWNER PRIOR TO WORK. OBSERVE ALL NEC REQUIRED CLEARANCES.
 - COORDINATE EXACT LOCATION OF 4-SCENE OR 5-SCENE DIMMER CONTROLLER WITH OWNER PRIOR TO WORK. PROVIDE ENGRAVED FACEPLATE LABELING EACH BUTTON PER OWNER'S DIRECTION.
 - CONNECT EMERGENCY LIGHTING AHEAD OF DIMMER DIRECTLY TO UNSWITCHED HOT CIRCUIT BREAKER LOAD TERMINALS. PROVIDE LOCK-ON DEVICE FOR DEDICATED EMERGENCY CIRCUIT BREAKER. LABEL ALL CIRCUITS SERVING EMERGENCY LIGHTING PER NEC.
 - UNLESS NOTED OTHERWISE, USE EXISTING CIRCUITS AND LIGHTING CONTACTORS WHERE POSSIBLE. PROVIDE WIRING, ADDITIONAL CONTACTORS, AND OTHER COMPONENTS AS REQUIRED TO ENSURE COMPLETE INTEGRATION OF NEW ITEMS INTO LIGHTING CONTROL SYSTEM FOR ALL LIGHTS, SIGNS, AND OTHER ITEMS REQUIRING CONTROL PER OWNER. FIELD VERIFY AND COORDINATE EXACT REQUIREMENTS. NEW COMPONENTS SHALL BE COMPATIBLE WITH EXISTING.
 - CONNECT ALL EXISTING AND NEW CONTROLLED EXTERIOR LOADS VIA SWITCHING MODULE IN LUTRON PANEL. PROVIDE WIRING AND CONNECTIONS REQUIRED TO ACCOMPLISH CONTROL AS DESCRIBED IN THIS DETAIL.
 - CONNECT NEW AND EXISTING EXTERIOR EMERGENCY LIGHTING AHEAD OF CONTACTORS.
 - ALL LIGHTING CONTACTORS SHALL BE: N.O., ELEC HELD, 120V COIL, 30A, IN NAME 1 ENCLOSURE (TYP.); POLES AS REQUIRED WITH TWO (2) SPARE. CONTRACTOR TO REPLACE EXISTING CONTACTORS AS NECESSARY ACCOMPLISH THIS.

3 LUTRON DIMMING & EXTERIOR LIGHTING CONTROL SYSTEM DETAIL
E1.2 NOT TO SCALE



Issue Date: 04-19-2018

REVISION INFORMATION	
1	
2	
3	
4	
5	
6	
7	
8	

Restaurant #: 1343

P1B (MEDIUM)

2782 WILMA RUDOLPH BLVD.

CLARKSVILLE, TN

ELECTRICAL PANEL SCHEDULES, RISER, & DETAILS