

2 EXISTING ELECTRICAL RISER (PARTIAL)
E1.2 NOT TO SCALE

EXISTING ELECTRICAL RISER KEYED NOTES:

- EXISTING FEEDER TO REMAIN AS IS. NO WORK REQUIRED. SHOWN FOR INFORMATION ONLY.
- EXISTING EQUIPMENT TO REMAIN.
- CONNECT NEW ITEMS TO OR REMOVE EXISTING ITEMS FROM EXISTING CIRCUITS IN THIS PANEL PER PLAN AND SCHEDULES.
- EXISTING PANEL 'A' FED FROM 200A, 3-POLE FUSED DISCONNECT WITH 200A FUSES IN 'M'.
- PROVIDE NEW LUTRON DIMMER SYSTEM PER DETAIL THIS SHEET. FEED FROM EXISTING 60A, 3-POLE BREAKER IN PANEL 'A' AND RECONNECT TO EXISTING FEEDER.

NOTE: PROVIDE WORK AND MATERIALS AS DEPICTED IN THESE DRAWINGS. IF ANY ADDITIONAL SYSTEMS (LIGHTING IN AREAS NOT BEING RENOVATED, HVAC CONTROLS, SECURITY, ETC.) THAT ARE NOT DIRECTLY INCLUDED IN THE SCOPE OF THIS WORK ARE AFFECTED BY WORK INDICATED, CONTRACTOR SHALL NOTIFY OWNER BEFORE PROCEEDING AND INCLUDE WORK TO RESTORE AFFECTED SYSTEMS TO PREVIOUS CONDITION.

NOTE: THIS RENOVATION RESULTS IN A NET LOAD REDUCTION. THE NEW LOAD ADDED IS SMALLER THAN THE EXISTING LOAD REMOVED.

PANEL A		VOLTAGE	200/120	3 PH	4W	MNS: 226		MLO	AIC RATINGS	EXISTING	REMARKS
		FEEDER AMP	200					ENCLOSURE	EXISTING	FIELD VERIFY EXISTING CIRCUITS	
BKR	NOTE	LOAD DESCRIPTION	VA	CKT	PHASE	CKT	VA	LOAD DESCRIPTION	NOTE	BKR	
200/1	E	NIGHT LIGHTS & EXIT SIGNS	452	1	A	2	370	DIMMER PANEL DIM 1	3.4	60/3	
200/1	E	KITCHEN LIGHTS	45	3	B	4	870				
200/1	E	KITCHEN LIGHTS	60	5	C	6	500				
200/1	E	KITCHEN LIGHTS	552	7	A	8	828	DIMMER PANEL DIM 2	3.4	60/3	
200/1	E	KITCHEN LIGHTS	444	9	B	10	340				
200/1	E	SERVICE ALLEY LTS.	254	11	C	12	480				
200/1	E	OFFICE LIGHTS	408	13	A	14	492	ROOF LIGHTS	2.5H2	200/1	
200/1	3	DINING RM 3 WINE COOLER	500	15	B	16	660	ROOF LIGHTS	2.5H2	200/1	
200/1	2.5H2	ROOF RECEPT & LTS.	228	17	C	18	588	ROOF LIGHTS	2.5H2	200/1	
200/1	3	LOBBY TV/CABLE BOXES	500	19	A	20	900	LANDSCAPE LITS.	2.5H2	200/1	
200/1	2.5H1	BUILDING SIGN	660	21	B	22	1272	LANDSCAPE LITS.	2.5H2	200/1	
200/1	2.5H1	BUILDING SIGN	456	23	C	24	300	PYLON SIGN	2.5H1	200/1	
200/1	2.5H2	NORTH EXTERIOR LITS	384	25	A	26	408	PYLON SIGN	2.5H1	200/1	
200/1	3	DINING RM 4 WINE COOLER	500	27	B	28	1000	PYLON SIGN	2.5H1	200/1	
200/1	2.5H2	FRONT EXTERIOR LITS.	468	29	C	30	420	PARKING LOT LITS.	2.5H3	200/1	
200/1	E	WOMEN'S RESTROOM	600	31	A	32	636	PARKING LOT LITS.	2.5H3	200/1	
200/1	E	MEN'S RESTROOM	528	33	B	34	456	PARKING LOT LITS.	2.5H3	200/1	
200/1	E	SERVICE AREALS	204	35	C	36	444	PARKING LOT LITS.	2.5H3	200/1	
200/1	3	BAR TV/CABLE/CONV. OUTLETS	1000	37	A	38	408	EXISTING LOAD	E	200/1	
200/1	3	TO GO COUNTER CONV	500	39	B	40	1212	EXISTING LOAD	E	200/1	
200/1	3	BAR PLUG/HELD	1000	41	C	42	500	LOBBY TV/CABLE BOXES	E	200/1	
Connected Load Per Phase			PH A:	7778	PH B:	6990	PH C:	5832			
Connected VA			Lighting	HVAC	Motors	Recept	Refrig	Kitchen	Misc	Total VA	Amps
Demand Factor			1.25	1.00	1.00	NEC	1.00	0.65	1.00	22600	62.7
Demand VA			22625	0	0	2500	1000	0	1000	27125	75.3

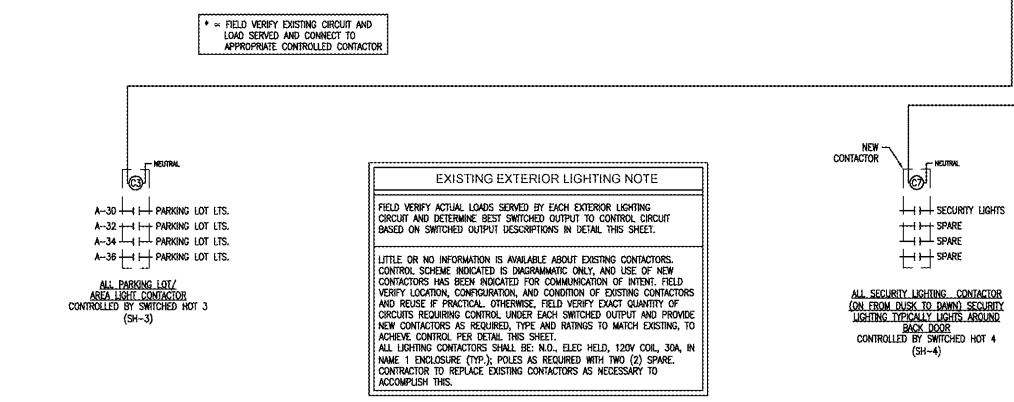
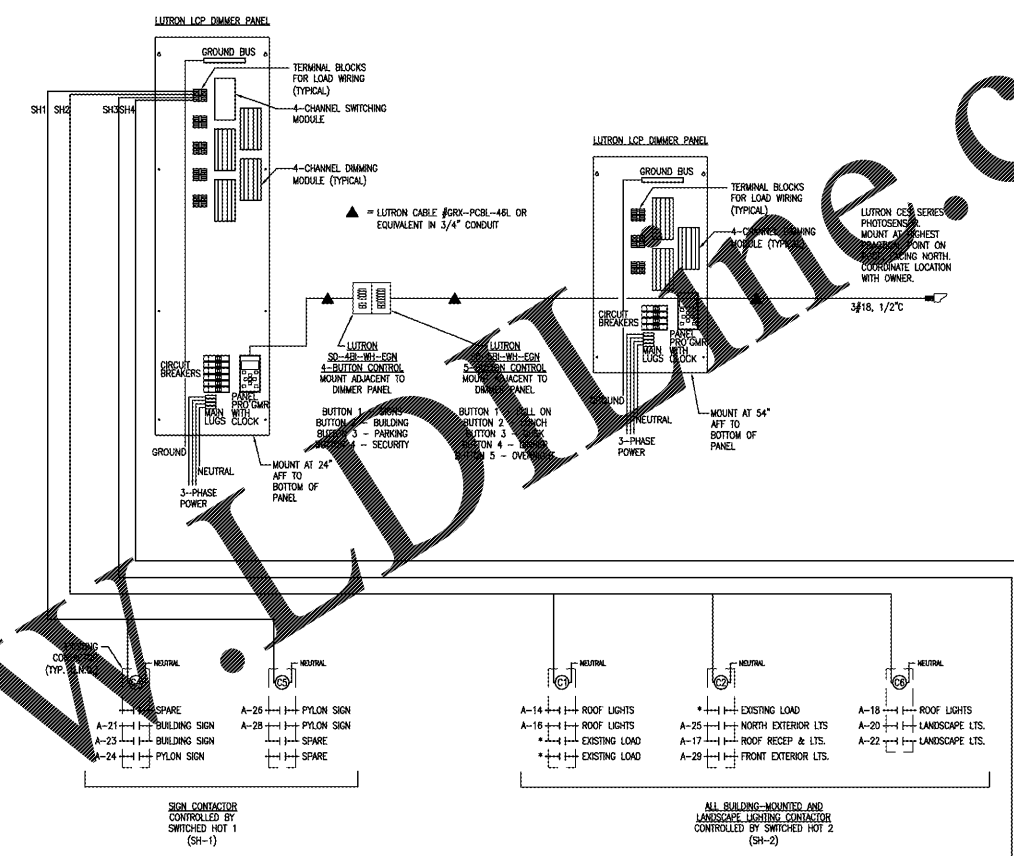
DIMMER PANEL 'DIM 1' (LUTRON LCP)		VOLTAGE	208/120	3 PH	4W	MNS: 100		MLO	AIC RATINGS	10K	
		FEEDER AMP	60					ENCLOSURE	FLUSH	NEMA 1	
CKT NUM & BREAKER	MODULE TYPE	MODULE MAX VA	DIMMER OUTPUT CKT	OUTPUT MAX VA	LOAD DESCRIPTION	LOAD VA	PHASE	REMARKS			
DM1-1	4-Output 4U	1920	SH-1	1200	SWITCHED OUTPUT 1 - SIGNAGE	0	A	EXTERIOR LIGHTING CONTROL, SWITCHED OUTPUT			
200/1			SH-2	1200	SWITCHED OUTPUT 2 - BUILDING LIGHTS	0		EXTERIOR LIGHTING CONTROL, SWITCHED OUTPUT			
			SH-3	1200	SWITCHED OUTPUT 3 - PARKING LOT LIGHTS	0		EXTERIOR LIGHTING CONTROL, SWITCHED OUTPUT			
			SH-4	1200	SWITCHED OUTPUT 4 - SECURITY LITS (DUSK TO DAWN)	0		EXTERIOR LIGHTING CONTROL, SWITCHED OUTPUT			
DM1-2	4-Output 4A	1920	DHT-5	1200	TO-GO LIGHT	74	B				
200/1			DHT-6	1200	BAR SOFFIT LIGHTS	130					
			DHT-7	1200	DINING 5 TRACK	210					
			DHT-8	1200	RESTROOM LIGHTS	220					
DM1-3	4-Output 4A	1920	DHT-9	1200	BAR STRIP LIGHTS	80	C				
200/1			DHT-10	1200	HALLWAY RECESSED LIGHTS/MONOPONTS	100					
			DHT-11	1200	DINING 1 & 3 TRACK	220					
			DHT-12	1200	SERVICE HALL 1 & 2 RECESSED LIGHTS	100					
DM1-4	4-Output 4A	1920	DHT-13	1200	DINING 7 PENDANTS	50	A				
200/1			DHT-14	1200	DINING 7 & 9 TRACK/ RECESSED LIGHT	150					
			DHT-15	1200	BACK BAR RECESSED LIGHTS	70					
			DHT-16	1200	BAR TRACK	100					
DM1-5	4-Output 4A	1920	DHT-17	1200	DINING 1 PENDANTS	50	B				
200/1			DHT-18	1200	DINING 3 & 4 PENDANT CLUSTER	24					
			DHT-19	1200	LOBBY TRACK	0					
			DHT-20	1200	SPARE	0					
DM1-6	BKR ONLY	N/A	N/A	N/A	DINING BAR EMERGENCY LIGHTS	0	C	NON-DIMMABLE BREAKER ONLY, LOCK-ON			
Connected Load Per Phase			PH A:	3	PH B:	3	PH C:	500			
Connected VA			Lighting	HVAC	Motors	Recept	Refrig	Kitchen	Misc	Total VA	Amps
Demand Factor			1.25	1.00	1.00	NEC	1.00	0.65	1.00	1740	4.8
Demand VA			2175	0	0	2500	1000	0	1000	2175	6.0

DIMMER PANEL 'DIM 2' (LUTRON LCP)		VOLTAGE	208/120	3 PH	4W	MNS: 100		MLO	AIC RATINGS	10K	
		FEEDER AMP	60					ENCLOSURE	FLUSH	NEMA 1	
CKT NUM & BREAKER	MODULE TYPE	MODULE MAX VA	DIMMER OUTPUT CKT	OUTPUT MAX VA	LOAD DESCRIPTION	LOAD VA	PHASE	REMARKS			
DM2-1	4-Output 4A	1920	DHT-1	1200	LOBBY PENDANTS	20	A				
200/1			DHT-2	1200	DINING 2 & 4 TRACK	230					
			DHT-3	1200	DINING 6 TRACK	210					
			DHT-4	1200	DINING 8 & 10 TRACK/ RECESSED LIGHT	160					
DM2-2	4-Output 4A	1920	DHT-5	1200	WINE CABINET LIGHTS	60	B				
200/1			DHT-6	1200	VESTIBULE RECESSED LIGHTS/MONOPONTS	110					
			DHT-7	1200	LOBBY PENDANT CLUSTER	120					
			DHT-8	1200	DINING 8 PENDANTS	50					
DM2-3	4-Output 4A	1920	DHT-9	1200	DINING 2 PENDANT	100	C				
200/1			DHT-10	1200	LOBBY TRACK	200					
			DHT-11	1200	LOBBY RECESSED LIGHTS/MONOPONTS/ TRACK	180					
			DHT-12	1200	SPARE	0					
DM2-4	BKR ONLY	N/A	N/A	N/A	DINING BAR EMERGENCY LIGHTS	0	A	NON-DIMMABLE BREAKER ONLY, LOCK-ON			
Connected Load Per Phase			PH A:	628	PH B:	340	PH C:	460			
Connected VA			Lighting	HVAC	Motors	Recept	Refrig	Kitchen	Misc	Total VA	Amps
Demand Factor			1.25	1.00	1.00	NEC	1.00	0.65	1.00	1428	4.0
Demand VA			1785	0	0	2500	1000	0	1000	1785	5.0

PANEL SCHEDULE NOTES:

- EXISTING CIRCUIT TO REMAIN AS IS.
- LOADS SWITCHED OUTPUT NUMBER IN LUTRON CABINET. RE-ROUTE CIRCUIT THROUGH BUS WITH CIRCUIT CONTROLLED BY THIS OUTPUT. REFER TO LUTRON DETAIL THIS SHEET.
- REMOVE CIRCUIT IN EXISTING PANEL SCHEDULE ACCORDING TO ACTUAL LOAD SERVED.
- REMOVE WIRING OR NEW EXTERIOR LIGHTING & SIGN CIRCUIT HOMERUNS TO ACHIEVE CONTROL PER LUTRON DETAIL THIS SHEET.
- NEW ITEM ADDED TO EXISTING ITEM REMOVED FROM THIS CIRCUIT. REVERSE CIRCUIT LOAD AND/OR DESCRIPTION.
- OVERLOADED CIRCUIT. FIELD VERIFY LOAD BEING SERVED AND COORDINATE W/COMP WITH MANUFACTURER OF EQUIPMENT. ADJUST CIRCUIT WIRING AND OVERCURRENT PROTECTION DEVICE AS REQUIRED. IF MULTIPLE LOADS ARE SERVED BY OVERLOADED CIRCUIT, DIVIDE LOADS AND CONNECT EXCESS TO AVAILABLE SPARE CIRCUIT.

1 PANEL SCHEDULES
E1.2 NOT TO SCALE



- NOTES:**
- THE DIMMER PANEL AND 4-SCENE OR 5-SCENE CONTROLLERS ARE FURNISHED, INSTALLED, AND WIRED BY THE CONTRACTOR.
 - REFER TO THE DIMMER PANEL INSTALLATION INSTRUCTIONS FOR ADDITIONAL INFORMATION AND REQUIREMENTS.
 - THE DIMMER PANEL AND CONTROLLER ARE MANUFACTURED BY LUTRON (NO EXCEPTIONS) AND SUPPLIED BY SPECIALTY LIGHTING. CONTACT SPECIALTY LIGHTING AT 860-767-0110 EXT. 221 FOR PROCESSING OF LUTRON EQUIPMENT.
 - COORDINATE EXACT MOUNTING LOCATION OF DIMMER PANEL WITH OWNER PRIOR TO WORK. OBSERVE ALL NEC REQUIRED CLEARANCES.
 - COORDINATE EXACT LOCATION OF 4-SCENE OR 5-SCENE DIMMER CONTROLLER WITH OWNER PRIOR TO WORK. PROVIDE ENGRAVED FACEPLATE LABELING EACH BUTTON PER OWNER'S DIRECTION.
 - CONNECT EMERGENCY LIGHTING AHEAD OF DIMMER DIRECTLY TO UNSWITCHED HOT CIRCUIT BREAKER LOAD TERMINALS. PROVIDE LOCK-ON DEVICE FOR DEDICATED EMERGENCY CIRCUIT BREAKER. LABEL ALL CIRCUITS SERVING EMERGENCY LIGHTING PER NEC.
 - UNLESS NOTED OTHERWISE, USE EXISTING CIRCUITS AND LIGHTING CONTACTORS WHERE POSSIBLE. PROVIDE WIRING, ADDITIONAL CONTACTORS, AND OTHER COMPONENTS AS REQUIRED TO ENSURE COMPLETE INTEGRATION OF NEW ITEMS INTO LIGHTING CONTROL SYSTEM FOR ALL LIGHTS, SIGNS, AND OTHER ITEMS REQUIRING CONTROL PER OWNER. FIELD VERIFY AND COORDINATE EXACT REQUIREMENTS. NEW COMPONENTS SHALL BE COMPATIBLE WITH EXISTING.
 - CONNECT ALL EXISTING AND NEW CONTROLLED EXTERIOR LOADS VIA SWITCHING MODULE IN LUTRON PANEL. PROVIDE WIRING AND CONNECTIONS REQUIRED TO ACCOMPLISH CONTROL AS DESCRIBED IN THIS DETAIL.
 - CONNECT NEW AND EXISTING EXTERIOR EMERGENCY LIGHTING AHEAD OF CONTACTORS.
 - ALL LIGHTING CONTACTORS SHALL BE: N.O., ELEC HELD, 120V COIL, 30A, IN NAME 1 ENCLOSURE (TYP.); POLES AS REQUIRED WITH TWO (2) SPARE. CONTRACTOR TO REPLACE EXISTING CONTACTORS AS NECESSARY TO ACCOMPLISH THIS.

3 LUTRON DIMMING & EXTERIOR LIGHTING CONTROL SYSTEM DETAIL
E1.2 NOT TO SCALE

DEVITA architects ARCHITECTS PROJECT #: 17-0363

NOT A CERTIFIED DOCUMENT
This document originally issued and sealed by Peter Basia, P.E., Tennessee License No. 120550 on 04-19-2018. This medium shall not be considered a certified document.

Olive Garden ITALIAN KITCHEN

Issue Date: 04-19-2018

REVISION INFORMATION

1	
2	
3	
4	
5	
6	
7	
8	

Restaurant #: 1343

P1B (MEDIUM)
2782 WILMA RUDOLPH BLVD.
CLARKSVILLE, TN

ELECTRICAL PANEL SCHEDULES, RISER, & DETAILS

E1.2