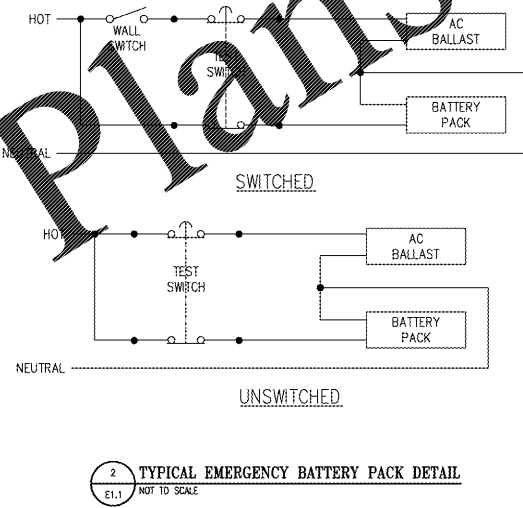
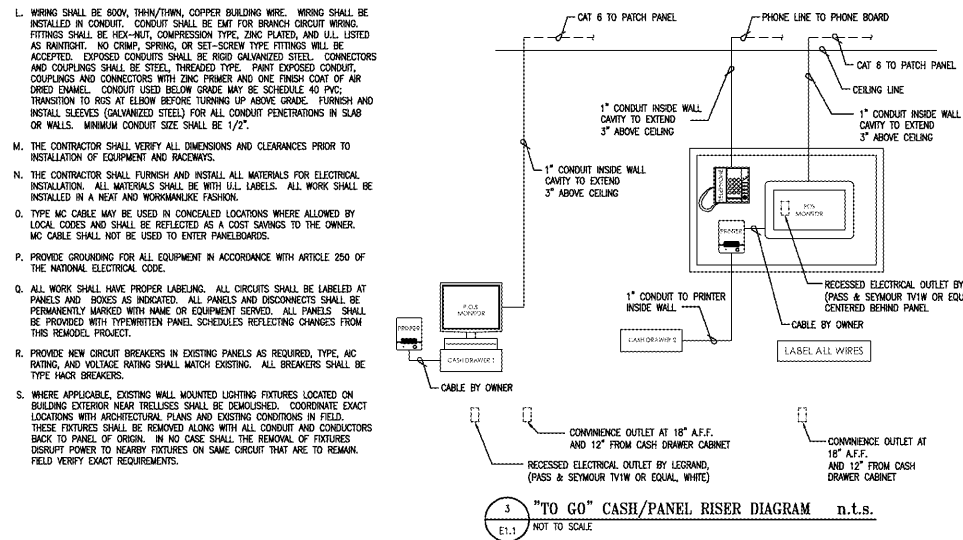


GENERAL NOTES:

- A. REFER TO ARCHITECTURAL REFLECTED CEILING PLAN AND ELEVATIONS FOR EXACT LIGHTING LAYOUT AND LIGHTING FIXTURE SCHEDULE.
- B. ALL WIRING SHALL BE NEW AND FIXTURES SHALL BE CIRCUITED AS INDICATED. EXISTING DEVICE BOXES AND CONDUIT SCHEDULED TO BE REMOVED MAY BE REUSED IF THEY COMPLY WITH ALL REQUIREMENTS OF THE NEC, IF NEW DEVICE LOCATION COINCIDES WITH EXISTING LOCATION, AND IF PRACTICAL.
- C. CONDUIT AND CIRCUIT ROUTINGS SHOWN ARE SCHEMATIC AND DIAGRAMMATIC ONLY. FIELD DETERMINE EXACT CIRCUIT ROUTING AND PROVIDE ALL NECESSARY CONDUITS, FITTINGS, JUNCTION BOXES, AND OTHER ITEMS.
- D. ALL DIMMER CIRCUITS SHALL HAVE A SEPARATE NEUTRAL. SHARING OF NEUTRALS IS NOT ALLOWED.
- E. UNLESS NOTED OTHERWISE, ALL CIRCUITS SHALL BE 120V, 1/2"Ø, 1/2"Ø. MAKE ADJUSTMENTS AS REQUIRED FOR VOLTAGE DROP PER NEC.
- F. FIELD DETERMINE EXACT LOCATIONS OF ALL PANELS AND CONTROLS.
- G. ALL ELECTRICAL CONSTRUCTION SHALL CONFORM TO THE NATIONAL ELECTRICAL CODE, APPLICABLE NEMA AND IEEE PUBLICATIONS, ALL STANDARDS AND OSHA REQUIREMENTS. WORK SHALL COMPLY WITH LOCAL, COUNTY, STATE AND NATIONAL CODES HAVING JURISDICTION.
- H. ELECTRICAL DEVICE INSTALLATION SHALL COMPLY WITH ACCESSIBILITY CODES ADOPTED FOR LOCAL AND STATE SPECIFICALLY MOUNTING SWITCHES, RECEPTACLES, AND ENVIRONMENTAL CONTROLS SO THAT THEY ARE MOUNTED WITH THE TOP OF THE DEVICE NO HIGHER THAN FORTY-EIGHT INCHES (48") ABOVE THE FINISHED FLOOR AND THE BOTTOM OF THE DEVICE NO LOWER THAN FIFTEEN INCHES (15") ABOVE THE FINISHED FLOOR. ELECTRICAL DEVICES ABOVE A COUNTERTOP OR OTHER OBSTRUCTION SHOULD COMPLY WITH ALL APPLICABLE SECTIONS OF ICC, ANSI, AND ADA. VERSION OF CODE SHALL BE AS ADOPTED BY AHJ.
- I. ALL LIGHT FIXTURES ARE EXISTING UNLESS NOTED OTHERWISE. LOCATIONS ARE INDICATED ON THIS PLAN FOR REFERENCE ONLY. FIELD VERIFY ALL LIGHTING FIXTURE LOCATIONS.
- J. ABANDONED POWER WIRING WILL BE REMOVED BACK TO THE SOURCE. THE ACCESSIBLE PORTIONS OF ABANDONED CONDUIT/TUBING AND EQUIPMENT SHALL BE REMOVED. THE ACCESSIBLE PORTIONS OF ABANDONED CABLES (VOICE, DATA, VIDEO, ALARM, ETC.) SHALL BE REMOVED.
- K. CONTRACTOR SHALL INSPECT SITE PRIOR TO SUBMITTING BID.

KEYED NOTES:

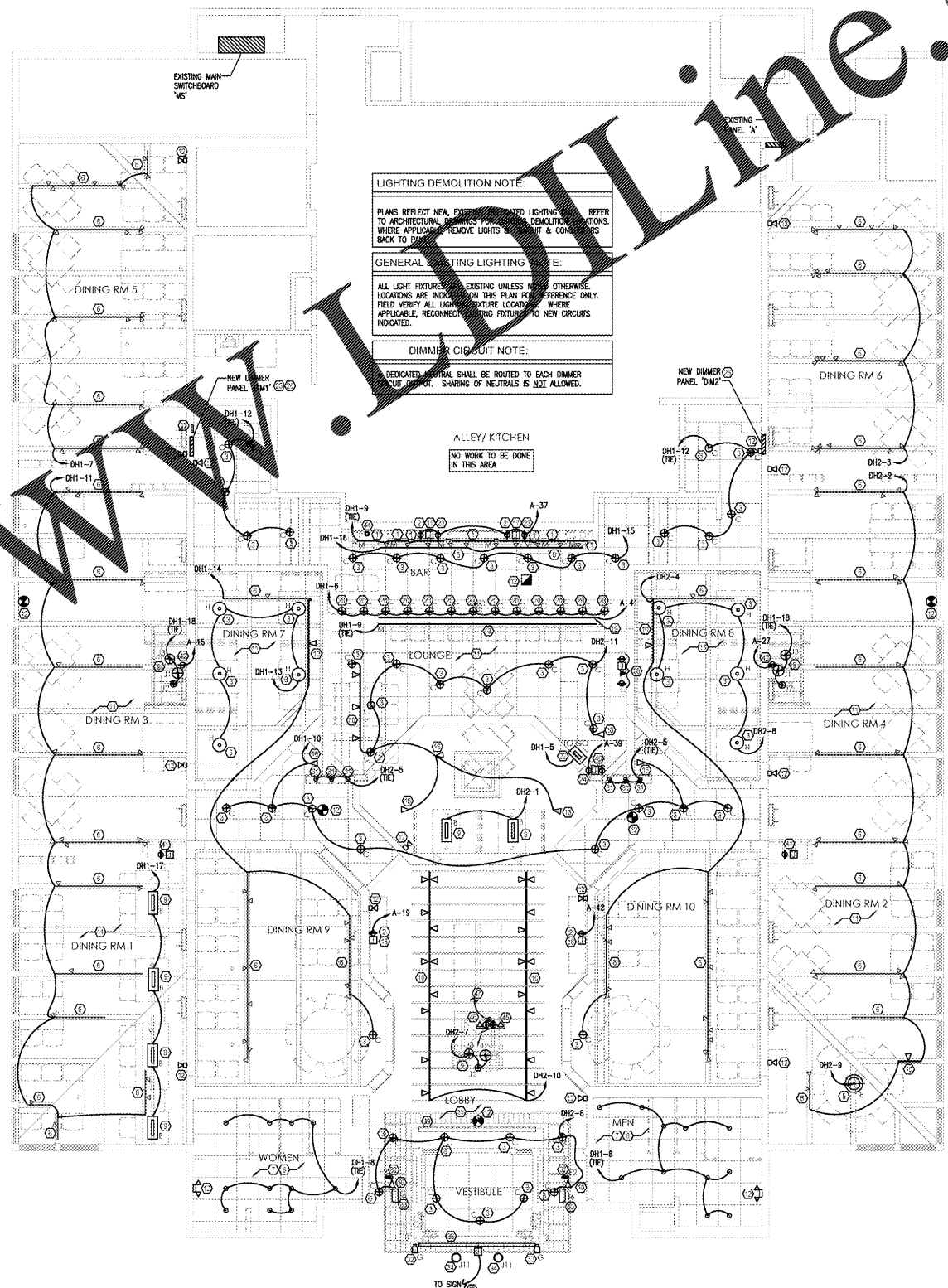
1. BAR CABINET & SIGNAGE LIGHTS SHALL BE CONNECTED TO CIRCUIT INDICATED. COORDINATE INSTALLATION WITH MILLWORK.
2. CONTRACTOR TO INSTALL OWNER PROVIDED GLASSSCREEN TV. AT LOCATION INDICATED. PROVIDE POWER CONNECTION AS REQUIRED. COORDINATE MOUNTING HEIGHT WITH OWNER AND ARCHITECT PRIOR TO ROUGH-IN.
3. REPLACE EXISTING LIGHT FIXTURE WITH TYPE NOTED. CONNECT TO CIRCUIT INDICATED AND REMOVE FROM TRACK LINE (IF APPLICABLE).
4. NOTE NOT USED.
5. NEW PENDANT/CHANDELIER FIXTURE. CONNECT TO CIRCUIT INDICATED.
6. EXISTING TRACK LIGHT FIXTURE TO REMAIN.
7. EXISTING RESTROOM LIGHTING TO BE RELAMPED AND RECONNECTED TO CIRCUIT INDICATED. COORDINATE EXACT REQUIREMENTS AND LOCATIONS WITH OWNER AND MANUFACTURER'S INSTRUCTIONS. LAMP AND ACCESSORIES FOR FIXTURE SHALL BE PER ARCHITECTURAL DRAWINGS.
8. RESTROOM EXHAUST FAN TO REMAIN ON EXISTING CIRCUIT AND CONTROLS UNLESS CURRENTLY CONNECTED TO EXISTING DIMMER PANEL. BEING DEMOLISHED, IN WHICH CASE FAN SHALL BE RECONNECTED TO NEW NON-DIMMED CIRCUIT. IN NO CASE SHOULD THE FAN BE CONNECTED TO THE RESTROOM LIGHTING CIRCUIT. CONTROLS SHALL BE PER OWNER REQUIREMENTS. FIELD VERIFY EXACT REQUIREMENTS.
9. NEW PENDANT FIXTURE. PROVIDE CONNECTION TO CIRCUIT INDICATED.
10. NEW LIGHT FIXTURE, TRACK OR MONOSPOT. PROVIDE CONNECTION TO CIRCUIT INDICATED. EXISTING ELECTRICAL CONNECTION MAY BE REUSED WHERE PRACTICAL/APPLICABLE.
11. PENDANTS AND TRACK SHALL BE ON SEPARATE CIRCUITS INDICATED.
12. EXISTING EMERGENCY LIGHT FIXTURE OR EXIT SIGN SHALL REMAIN, SUBJECT TO REPAIR OR REDUCING PER "EMERGENCY LIGHTING SCOPE OF WORK" NOTE ON THIS PAGE.
13. NEW STRIP LIGHT FIXTURE. PROVIDE CONNECTION TO CIRCUIT INDICATED.
14. NOTE NOT USED.
15. NOTE NOT USED.
16. EXISTING TRACK LIGHT OR MONOSPOT FIXTURE TO BE REPLACED. PROVIDE NEW TRACK OR MONOSPOT FIXTURE OF TYPE, FINISH, AND LOCATION PER ARCHITECTURAL ROP. CONNECT TO CIRCUIT INDICATED. COORDINATE POSITIONING OF HEADS WITH OWNER. EACH TABLE SHALL BE ILLUMINATED BY ONE HEAD, OTHER HEADS SHALL BE DIRECTED TO ILLUMINATE DECOR & PATH OF TRAVEL.
17. CONTRACTOR TO INSTALL OWNER PROVIDED CABLE RECEIVER AT THIS LOCATION. PROVIDE POWER AND CABLE CONNECTION AS REQUIRED. COORDINATE MOUNTING HEIGHT WITH OWNER AND ARCHITECT PRIOR TO ROUGH-IN.
18. PROVIDE CAT6 CABLE FROM TV TO MANAGER'S OFFICE. COORDINATE EXACT TERMINATION POINTS WITH OWNER.
19. PROVIDE USB PLUG/MO. CONNECT TO CIRCUIT INDICATED. COORDINATE INSTALLATION WITH MILLWORK.
20. NEW SOFTY LIGHTS. TYPE AND FINISH PER ARCHITECTURAL DRAWINGS. PROVIDE CONNECTION TO CIRCUIT INDICATED.
21. NOTE NOT USED.
22. NEW TO GO LIGHT FIXTURE. TYPE AND FINISH PER ARCHITECTURAL DRAWINGS. PROVIDE CONNECTION TO CIRCUIT INDICATED.
23. PROVIDE DUPLEX RECEPTACLE AT RIGHT END OF BACK BAR SECTION INDICATED. CONNECT TO CIRCUIT INDICATED. COORDINATE EXACT REQUIREMENTS WITH OWNER.
24. PROVIDE CONNECTION TO NEW CONVENIENCE OUTLET. COORDINATE EXACT REQUIREMENTS WITH OWNER.
25. PROVIDE NEW LUTRON RELAY MODULE IN LUTRON PANEL DRIVEN BY INTEGRATED OUTPUT FROM DIMMING SYSTEM TIME CLOCK. USE EXISTING CONTRACTORS AND CONNECT TO LUTRON SYSTEM AS REQUIRED PER MANUFACTURER'S INSTRUCTIONS. COORDINATE EXACT REQUIREMENTS WITH OWNER PRIOR TO WORK. REFER TO DETAIL AND PANEL SCHEDULES ON SHEET E1.2. FIELD VERIFY EXACT LOCATION OF EXISTING EXTERIOR LIGHTING CONTROLS.
26. PROVIDE NEW DIMMER PANEL IN PLACE OF EXISTING DIMMER PANEL TO BE REMOVED AT THIS LOCATION. COORDINATE EXACT REQUIREMENTS PRIOR TO WORK.
27. LOCATE LUTRON REMOTE 4-BUTTON AND 5-BUTTON CONTROLLERS AT THIS LOCATION ADJACENT TO DIMMER PANEL. CONTROLLERS SHALL BE MOUNTED IN A 2-GANG JUNCTION BOX AT 48" AFF.
28. NOTE NOT USED.
29. NOTE NOT USED.
30. NOTE NOT USED.
31. NEW WINE CABINET LIGHT FIXTURES. CONNECT TO CIRCUIT INDICATED. FIELD VERIFY EXACT TYPE AND REQUIREMENTS.
32. NEW EXTERIOR FIXTURE. CONNECT TO CIRCUIT INDICATED. COORDINATE AREA EXTERIOR LIGHTING CIRCUIT. COORDINATE FINAL MOUNTING HEIGHT (IF APPLICABLE) AND LOCATION WITH ARCHITECTURAL ELEVATIONS. FIELD VERIFY EXACT TYPE AND REQUIREMENTS.
33. NEW ROOF MOUNTED FLOOD LIGHT. PROVIDE NEW CIRCUIT AND CONTROLS AS EXISTING ROOF FLOOR. PROVIDE NEW CIRCUIT AND CONTROLS AS EXISTING ROOF FLOOR.
34. CONNECT EXTERIOR EMERGENCY LIGHT HEAD OF CEILING TO NEW CIRCUIT. FIELD VERIFY EXACT LOCATION OF EXISTING EXTERIOR LIGHTING CIRCUIT. PROVIDE WIRING AS REQUIRED BACK TO PANEL. FIELD VERIFY EXACT REQUIREMENTS.
35. PROVIDE NEW WIRING FOR NEW ROUGH-IN. COORDINATE EXACT REQUIREMENTS AND LOCATION WITH ARCHITECTURAL DRAWINGS. CONNECT TO EXISTING POWER AND DATA CONDUITS. PROVIDE ALL SHAB CUTTING, TRACING, ETC. FOR COMPLETE INSTALLATION. POWER & DATA SHALL BE ROUTED TO ABOVE CEILING. FIELD VERIFY EXACT REQUIREMENTS & ROUTING.
36. BUILDING SIGNAGE TO BE INSTALLED BY OTHERS.



EMERGENCY LIGHTING SCOPE OF WORK

UNLESS NOTED OTHERWISE, ALL EMERGENCY EGRESS LIGHTS AND EXIT SIGNS ARE TO REMAIN IN EXISTING LOCATIONS. CONTRACTOR SHALL FIELD VERIFY ALL EXISTING EMERGENCY EGRESS LIGHTS AND EXIT SIGNS ARE FUNCTIONAL AND SHALL REPAIR OR REPLACE EXISTING FIXTURES AS REQUIRED. RECONNECTION OF DINING AREA NORMAL LIGHTS TO NEW DIMMER PANEL SHALL NOT DISRUPT PROPER OPERATION OF EMERGENCY LIGHTS AND EXIT SIGNS. WHERE APPLICABLE, EMERGENCY LIGHTS AND EXIT SIGNS MAY BE CONNECTED TO LOCKED-ON BREAKER IN NEW DIMMER PANEL AS ALLOWED BY EXCEPTION TO NEC ARTICLE 700.15(1). OTHERWISE, THESE FIXTURES SHALL BE CONNECTED TO UNINTERRUPTED CONTINUOUSLY HOT CONDUCTOR OF THE LIGHTING CIRCUIT THAT FEEDS THE INDIVIDUAL DIMMER MODULES. FIELD VERIFY EXACT REQUIREMENTS.

NONAG GROUP SERVES AS COMMISSIONING AGENT, AND IS RESPONSIBLE FOR VERIFICATION OF CIRCUITING, INSTALLATION, AND CONTROL PER DESIGN DOCUMENTS. TO ENSURE PROPER INSTALLATION, COORDINATE WITH NONAG GROUP REPRESENTATIVE FOR QUESTIONS, CONCERNS, AND FIELD ISSUES REGARDING INTERIOR/EXTERIOR LIGHTING PLACEMENT, INSTALLATION AND CONTROL, AND THE INSTALLATION AND PROGRAMMING OF THE LUTRON LIGHTING CONTROL SYSTEM. CONTACT NONAG GROUP AT 866-853-8583. COORDINATE ALL DESIGN CHANGES WITH ENGINEER OF RECORD.



LIGHTING DEMOLITION NOTE:

PLANS REFLECT NEW, EXISTING AND LIGHTING DEMOLITION. REFER TO ARCHITECTURAL DRAWINGS FOR DEMOLITION LOCATIONS. WHERE APPLICABLE, REMOVE LIGHTS & CONDUIT BACK TO PANEL.

GENERAL LIGHTING LIGHTING NOTE:

ALL LIGHT FIXTURES, EXISTING UNLESS NOTED OTHERWISE, LOCATIONS ARE INDICATED ON THIS PLAN FOR REFERENCE ONLY. FIELD VERIFY ALL LIGHTING FIXTURE LOCATIONS WHERE APPLICABLE. RECONNECTION TO NEW CIRCUITS INDICATED.

DIMMER CIRCUIT NOTE:

DEDICATED NEUTRAL SHALL BE ROUTED TO EACH DIMMER CIRCUIT. SHARING OF NEUTRALS IS NOT ALLOWED.

THESE DRAWINGS AND SPECIFICATIONS REMAIN THE PROPERTY OF THE DESIGN PROFESSIONAL. UNAUTHORIZED COPIES OF THESE DRAWINGS ARE STRICTLY PROHIBITED.

NONAG GROUP PA
architects
 1000 N. W. 10th St., Suite 1000
 Fort Lauderdale, FL 33304
 Phone: 954.575.1000
 Fax: 954.575.1001
 Email: info@nonag.com
 Website: www.nonag.com
 ARCHITECT PROJECT #:
 17-0363

DEVITA architects
 1000 N. W. 10th St., Suite 1000
 Fort Lauderdale, FL 33304
 Phone: 954.575.1000
 Fax: 954.575.1001
 Email: info@devita.com
 Website: www.devita.com
 ARCHITECT PROJECT #:
 17-0363

olive Garden
 ITALIAN KITCHEN

NOT A CERTIFIED DOCUMENT
 This document originally issued and sealed by Peter Basia, P.E., Tennessee License No. 120550 on 04-19-2018. This medium shall not be considered a certified document.

Issue Date: 04-19-2018
 REVISION INFORMATION
 1
 2
 3
 4
 5
 6
 7
 8

Restaurant #: 1343
 P1B (MEDIUM)
 2782 WILMA RUDOLPH BLVD.
 CLARKSVILLE, TN
 ELECTRICAL LIGHTING PLAN
 E1.1