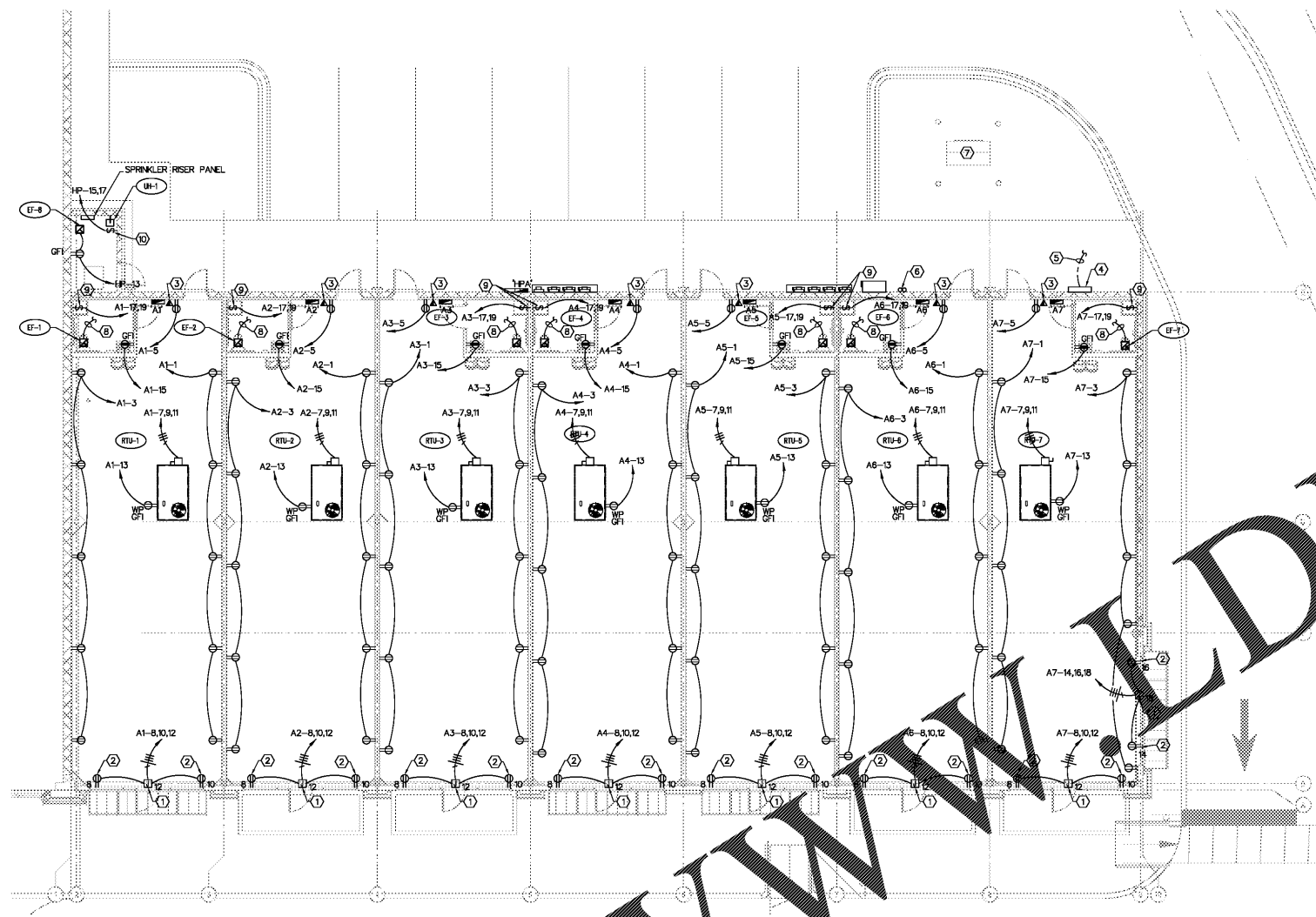
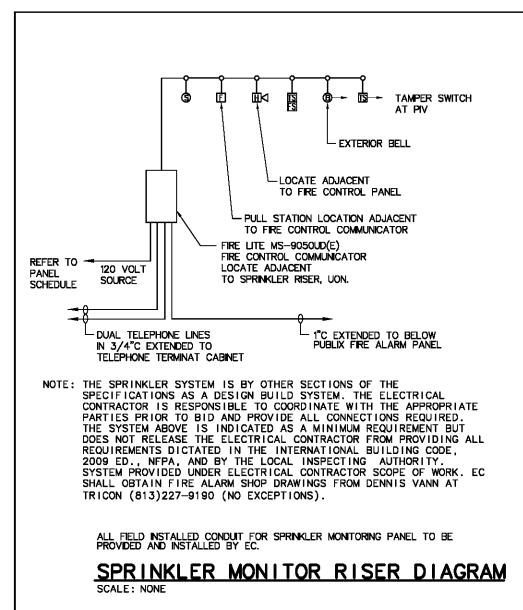
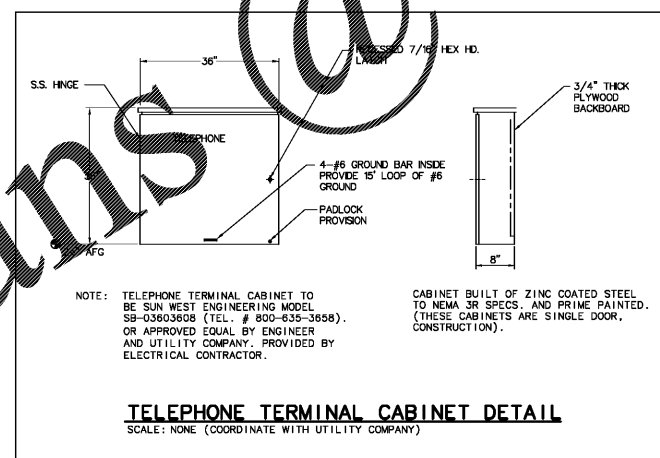


Order Plans @



**POWER PLAN**  
SCALE: 1/8"=1'-0"



**APPROXIMATE EQUIPMENT SCHEDULE**

UNIT LOCATION	WIRE AND CONDUIT		DISCONNECTING MEANS
	FEEDER	BRANCH	
RTU-1	3/4" C WITH 3 #6, 1 #10 EG.	3/4" C WITH 3 #6, 1 #10 EG.	EO/3/MP/NEMA 3R
RTU-2	3/4" C WITH 3 #6, 1 #10 EG.	3/4" C WITH 3 #6, 1 #10 EG.	EO/3/MP/NEMA 3R
RTU-3	3/4" C WITH 3 #6, 1 #10 EG.	3/4" C WITH 3 #6, 1 #10 EG.	EO/3/MP/NEMA 3R
RTU-4	3/4" C WITH 3 #6, 1 #10 EG.	3/4" C WITH 3 #6, 1 #10 EG.	EO/3/MP/NEMA 3R
RTU-5	3/4" C WITH 3 #6, 1 #10 EG.	3/4" C WITH 3 #6, 1 #10 EG.	EO/3/MP/NEMA 3R
RTU-6	3/4" C WITH 3 #6, 1 #10 EG.	3/4" C WITH 3 #6, 1 #10 EG.	EO/3/MP/NEMA 3R
RTU-7	3/4" C WITH 3 #6, 1 #10 EG.	3/4" C WITH 3 #6, 1 #10 EG.	EO/3/MP/NEMA 3R

GENERAL NOTES:  
(1) EG IS ADVISED THAT FUSE REDUCER MAY BE REQUIRED.

- NOTES**
- JUNCTION BOX MOUNTED BEHIND FASCIA IN SOFFIT AREA FOR FUTURE TENANT SIGN (VERIFY EXACT LOCATION WITH GENERAL CONTRACTOR). ROUTE HOMERUN THRU TENANT TIME CLOCK.
  - DUPLEX RECEPTACLE FOR SHOW WINDOW LIGHTING MOUNTED FLUSH IN CEILING.
  - TENANT TELEPHONE JUNCTION BOX. EXTEND 1" EMPTY CONDUIT WITH PULLSTRING TO TELEPHONE TERMINAL CABINET.
  - TELEPHONE TERMINAL CABINET.
  - EXTEND (2) 4" EMPTY CONDUITS WITH PULLSTRING TO PROPERTY LINE FOR TELEPHONE SERVICE. COORDINATE ROUTING OF CONDUIT WITH TELEPHONE COMPANY.
  - (2) 4" EMPTY SPARE CONDUITS. REFER TO THE RISER DIAGRAM.
  - APPROXIMATE LOCATION OF UTILITY TRANSFORMER.
  - EXTEND CIRCUITING TO LIGHT FIXTURE THIS ROOM. EXHAUST FAN TO OPERATE WITH LIGHTING.
  - 20 AMP 2 POLE TOGGLE SWITCH MOUNTED ADJACENT TO EWH. PROVIDE CONNECTION TO EWH. EXTEND 1/2" C WITH 2 #12, 1 #12 EG TO PANEL SHOWN. COORDINATE EXACT LOCATION WITH DIVISION 15 PRIOR TO ROUGH-IN.
  - 30 AMP 2 POLE TOGGLE SWITCH MOUNTED ADJACENT TO UH-1. PROVIDE CONNECTION TO UH-1. EXTEND 3/4" C WITH 3 #10, 1 #10 EG TO PANEL SHOWN. COORDINATE EXACT LOCATION WITH DIVISION 15 PRIOR TO ROUGH-IN.
- GENERAL NOTES**
- CONTRACTOR SHALL MAINTAIN A MINIMUM 24" SEPARATION BETWEEN OUTLETS IN ALL FIRE RATED PARTITIONS.
  - ALL EXPOSED CONDUIT SHALL BE LOCATED WITHIN JOIST SPACE AREA OR ATTACHED DIRECTLY TO THE JOIST. CONDUIT SHALL NOT BE SUSPENDED FROM STRUCTURE.

1925 Prospect Ave  
Orlando, FL 32814  
P (407) 661-9100  
F (407) 661-9101

**Colucci & Retzlaff**  
Architects & Engineers

**White Development Company**  
1801 South Keene Rd.  
Clearwater, FL 33766

**Retail @ Tattersall Park**  
US Highway 280 & Highway 119  
Hoover, AL

**Power Plan**

**Revision Schedule**

No.	Description	Date
A	100% Public Submission	06-07-18
B	ISSUED TO BIDDING	7-26-18

**PROJECT INFO**

PROJECT NO.	210000
DATE	07-27-18
DESIGNER	SW
CHECKED	PC

Job Number: 51222

**Colwill Engineering**  
Consulting Engineers, Inc.  
Engineering Business No. CA-2381 E  
4700 East Adams Drive, Tampa, Florida 33606  
Tel: 813-941-8888 Fax: 813-941-8888  
© 2018 ALL RIGHTS RESERVED

E200