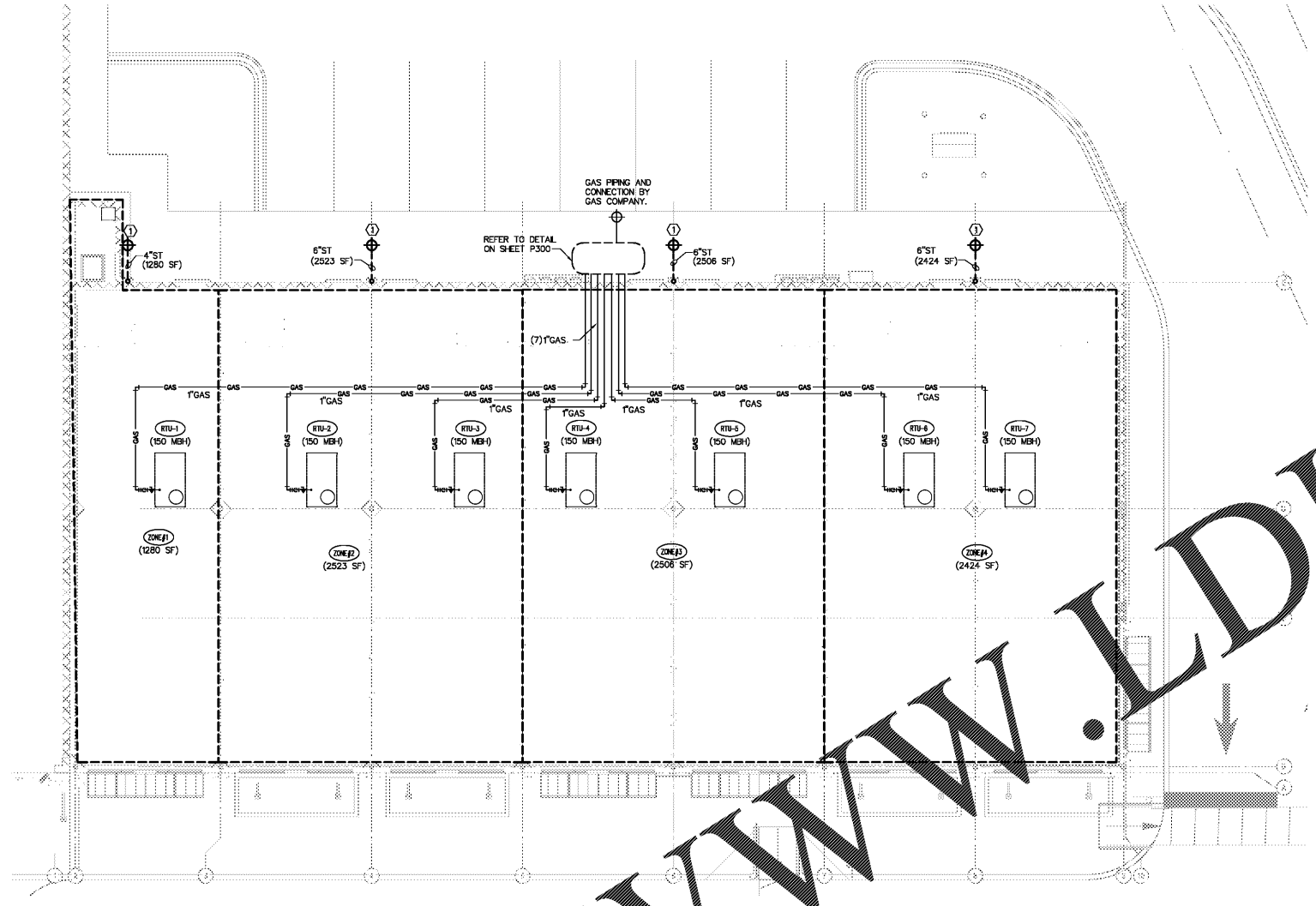
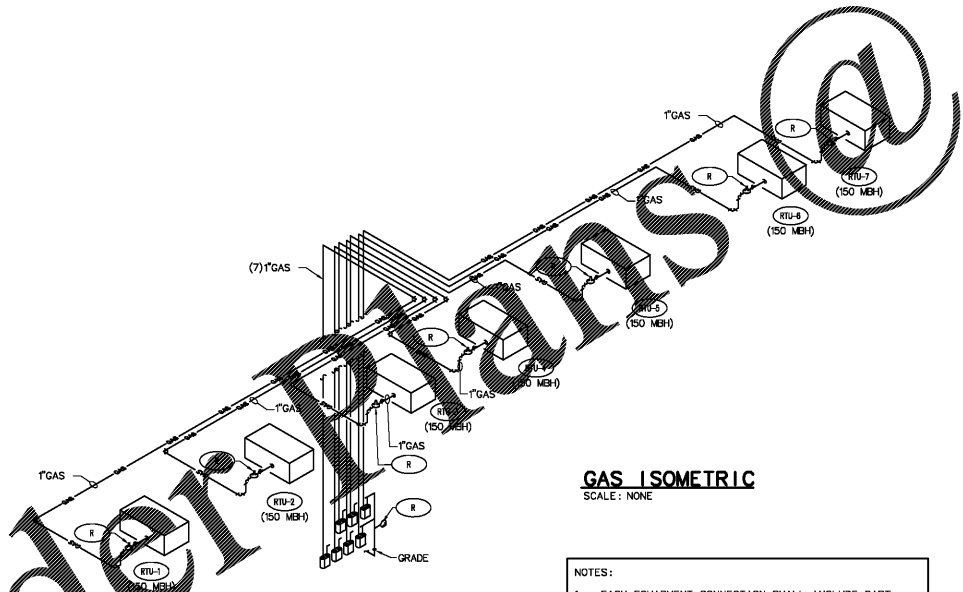


WWW.LDILine.com



STORM/GAS ROOF PLAN
SCALE: 1/8" = 1'-0"



GAS ISOMETRIC
SCALE: NONE

- NOTES:
- EACH EQUIPMENT CONNECTION SHALL INCLUDE DIRT LEG, GAS VALVE, UNION AND GAS PRESSURE REGULATOR (MAXITROL 325-L-B SERIES OR EQUAL)
 - GAS DELIVERY PRESSURE IS 2 PSI. REGULATE AT EQUIPMENT DOWN TO PRESSURE BY EQUIPMENT MANUFACTURER.
 - ROUTE GAS PIPE ON ROOF.
 - GAS LINES SIZED FOR FUTURE CAPACITY.

ROOF DRAIN SCHEDULE

LOCATION: HOOVER, ALABAMA
PRIMARY RAINFALL RATE: 3.6 1/4" AIR
SLOPE OF DRAIN PIPING: 1/8" PER FOOT

| ZONE NO. | ROOF AREA (SQ. FT.) | PRIMARY DRAIN SIZE |
|----------|---------------------|--------------------|
| 1 | 1280 | 4" |
| 2 | 2523 | 6" |
| 3 | 2506 | 6" |
| 4 | 2424 | 6" |

ROOF DRAINAGE SYSTEMS WERE SIZED PER TABLE 1106.3 OF THE 2009 INTERNATIONAL PLUMBING CODE.

BUILDING GAS DEMAND

| ① | FIXTURE | CONN. | MEH EACH | QTY EACH | MEH ALL |
|-----------|------------------|-------|----------|----------|---------|
| 1 | ROOF TOP UNIT #1 | 1/2" | 150 | 1 | 150 |
| 2 | ROOF TOP UNIT #2 | 1/2" | 150 | 1 | 150 |
| 3 | ROOF TOP UNIT #3 | 1/2" | 150 | 1 | 150 |
| 4 | ROOF TOP UNIT #4 | 1/2" | 150 | 1 | 150 |
| 5 | ROOF TOP UNIT #5 | 1/2" | 150 | 1 | 150 |
| 6 | ROOF TOP UNIT #6 | 1/2" | 150 | 1 | 150 |
| 7 | ROOF TOP UNIT #7 | 1/2" | 150 | 1 | 150 |
| TOTAL MEH | | | | | 1050 |

SYSTEM SIZED FOR 0.6 SPECIFIC GRAVITY GAS AND DELIVERY OF 2.0 PSI OR LESS, PRESSURE DROP 10 PSI
GAS PIPE SIZED ON 150 FT.
2009 INTERNATIONAL FUEL GAS CODE TABLE 402.4(11)
(MEH RATING FOR THE EQUIPMENT IS DETERMINED BY THE MANUFACTURER.)

PLUMBING KEYED NOTES: ○

- EXTEND AND CONNECT NEW STORM PIPING FROM BASE OF DOWNSPOUT TO SITE STORM SEWER SYSTEM. FIELD VERIFY EXACT SIZE, LOCATION, INVERT ELEVATION AND DIRECTION OF FLOW PRIOR TO COMMENCEMENT OF WORK.

PLUMBING LEGEND

| | |
|----------------------|--------|
| SANITARY SEWER (SAN) | —S—S |
| GAS LINE (G) | —GAS—S |
| PIPE DROP | —D—D |
| PIPE RISE | —R—R |
| GAS COCK | —C—C |
| POINT OF CONNECTION | ⊕ |

1925 Prospect Ave.
Orlando, FL 32814
P (407) 661-9100
F (407) 661-9101
www.r.p.e.com

Colac & Ret
Architects Engineers

CLIENT NAME
White Development Company
1801 South Keane Rd.
Clearwater, FL 33766

PROJECT NAME
Retail @ Tattersall Park
US Highway 280 & Highway 119
Hoover, AL

SHEET TITLE
Storm/Gas Roof Plan

| No. | Description | Date |
|-----|------------------------|----------|
| A | 100% PUNCH SUBMISSION | 06/27/18 |
| B | ISSUED TO BID & PERMIT | 7/26/18 |

| | |
|-------------|----------|
| PROJECT NO. | 210000 |
| DATE | 07/27/18 |
| DRAWN BY | JK |
| CHECKED BY | JS |

Job Number: 51222
Colwill Engineering
Geospatial Engineers, Inc.
Engineering Business No. CA-25811 X
4709 East Adams Drive, Tampa, Florida 33606
Tel: 813-941-8888 Fax: 813-941-8888
© 2018 ALL RIGHTS RESERVED

Order Plans @