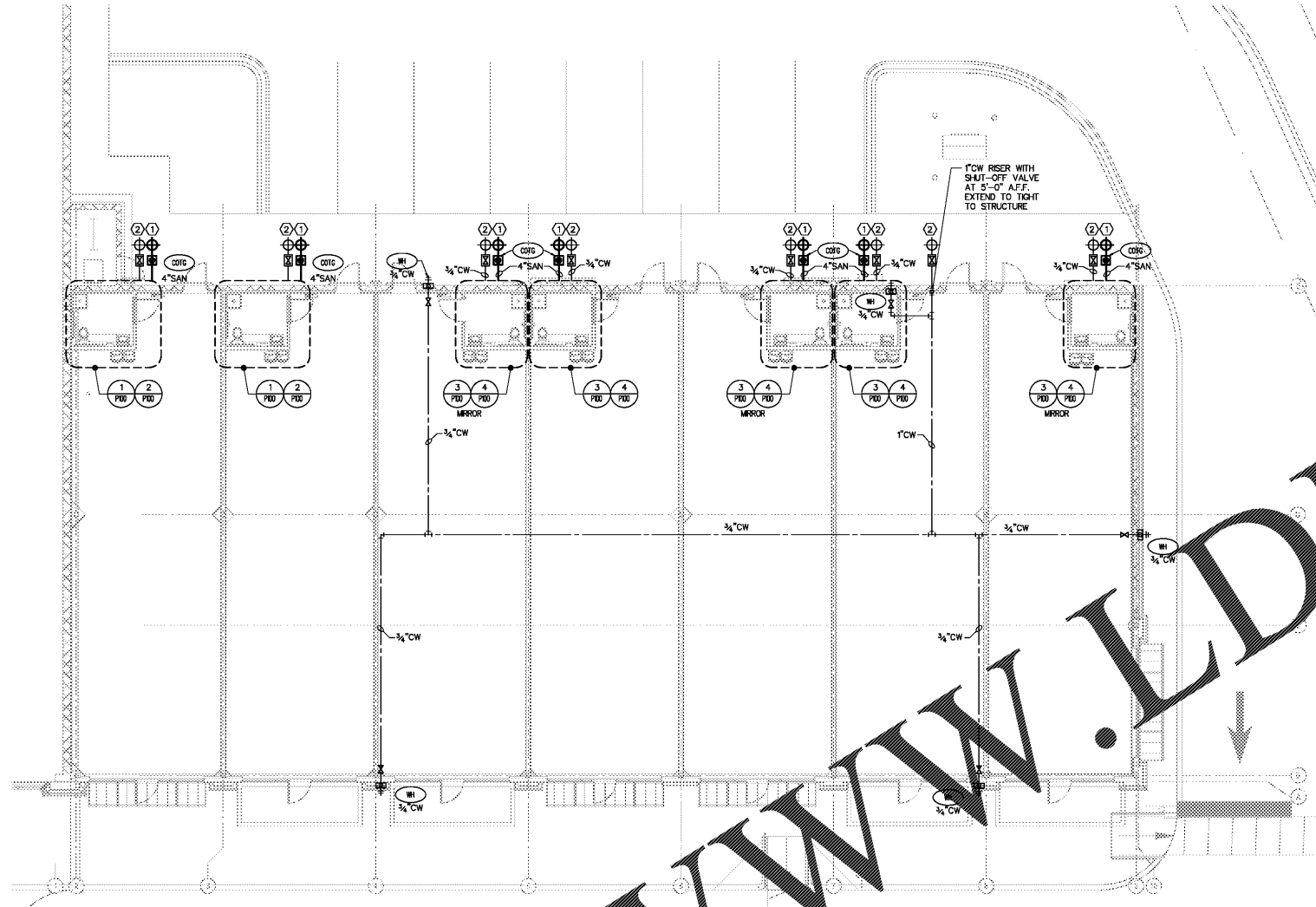
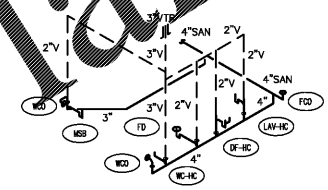


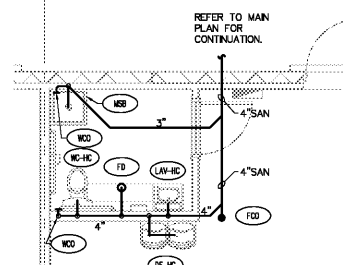
Order Plans @



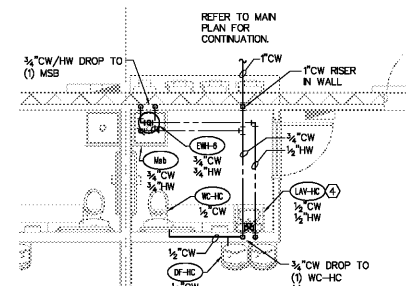
PLUMBING PLAN
SCALE: 1/8"=1'-0"



SANITARY ISOMETRIC
SCALE: NONE



SANITARY ENLARGEMENT
SCALE: 1/4"=1'-0"



WATER ENLARGEMENT
SCALE: 1/4"=1'-0"

- PLUMBING KEYED NOTES:** ○
1. EXTEND AND CONNECT NEW SANITARY PIPING TO EXISTING SANITARY SEWER SYSTEM. FIELD VERIFY EXACT SIZE, LOCATION, INVERT ELEVATION AND DIRECTION OF FLOW PRIOR TO COMMENCEMENT OF WORK.
 2. EXTEND AND CONNECT NEW COLD WATER PIPING TO EXISTING DOMESTIC WATER SYSTEM. FIELD VERIFY EXACT SIZE AND LOCATION PRIOR TO COMMENCEMENT OF WORK. PROVIDE A SHUT-OFF VALVE AT CONNECTION TO EXISTING.
 3. EXTEND AND CONNECT NEW STORM PIPING TO EXISTING STORM SEWER SYSTEM. FIELD VERIFY EXACT SIZE, LOCATION, INVERT ELEVATION AND DIRECTION OF FLOW PRIOR TO COMMENCEMENT OF WORK.
 4. THERMOSTATIC MIXING VALVE

PLUMBING LEGEND

SANITARY SEWER (SAN)	—○—○—
STORM SEWER (ST)	—○- - -○-
VENT (V)	—○- - -○-
COLD WATER (CW)	—○—○—
FLOOR CLEANOUT (FCO)	—○—○—
CLEANOUT TO GRADE (COTG)	—○—○—
PIPE DROP	—○—○—
PIPE RISE	—○—○—
SHUT-OFF VALVE	—○—○—
VALVE IN CAST IRON BOX	—○—○—
POINT OF CONNECTION	—○—○—

1925 Prospect Ave.
Orlando, FL 32814
P (407) 661-9100
F (407) 661-9101
www.cpa.com

Chilac & Ret
Architects Engineers

White Development Company
1801 South Keane Rd.
Clearwater, FL 33766

Retail @ Tattersall Park
US Highway 280 & Highway 119
Hoover, AL

Plumbing Plan

PROJECT NO. 210000
DATE 07/27/18
DRAWN BY
CHECKED JS

No.	Description	Date
A	100% Public Submission	06/27/18
B	ISSUED TO SIG & Permit	7/26/18

Revision Schedule	Date
A	06/27/18
B	7/26/18