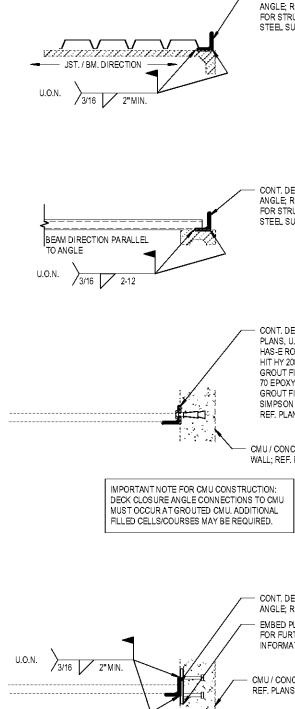


Total Weight	Max. "W"	Opening Size	Leg A	Leg B
Up To 150 LBS	4'-0"	N/A	L3X3X3/16	L3X3X3/16
Up To 150 LBS	6'-0"	N/A	Section A-A	L3X3X1/4
Up To 150 LBS	8'-0"	L4X4X1/2	L3 1/2X3 1/2X1/4	L3 1/2X3 1/2X1/4
Up To 150 LBS	10'-0"	L5X5X3/4	Section B-B	L4X4X1/4
Up To 150 LBS	12'-0"	L5X5X3/4	Section B-B	L5X3X1/4 LDV

NOTES:  
 1. INSTALL STRUCTURAL CURBS ON TOP OF FRAMES AND SECURE TO SUPPORT STEEL SERVICING PLATES. DO NOT PLACE ALL STRUCTURAL CURBS ON TOP OF DECK ADJUSTERS.  
 2. ALL RTU WEIGHTS SHALL BE WITHIN 3 INCHES OF JOIST PANEL POINTS, UNLESS OTHERWISE NOTED.  
 3. ALL RTU WEIGHTS SHALL BE WITHIN 3 INCHES OF JOIST PANEL POINTS, UNLESS OTHERWISE NOTED.  
 4. ALL RTU WEIGHTS SHALL BE WITHIN 3 INCHES OF JOIST PANEL POINTS, UNLESS OTHERWISE NOTED.  
 5. ALL RTU WEIGHTS SHALL BE WITHIN 3 INCHES OF JOIST PANEL POINTS, UNLESS OTHERWISE NOTED.  
 6. ALL RTU WEIGHTS SHALL BE WITHIN 3 INCHES OF JOIST PANEL POINTS, UNLESS OTHERWISE NOTED.  
 7. ALL RTU WEIGHTS SHALL BE WITHIN 3 INCHES OF JOIST PANEL POINTS, UNLESS OTHERWISE NOTED.  
 8. ALL RTU WEIGHTS SHALL BE WITHIN 3 INCHES OF JOIST PANEL POINTS, UNLESS OTHERWISE NOTED.  
 9. ALL RTU WEIGHTS SHALL BE WITHIN 3 INCHES OF JOIST PANEL POINTS, UNLESS OTHERWISE NOTED.  
 10. ALL RTU WEIGHTS SHALL BE WITHIN 3 INCHES OF JOIST PANEL POINTS, UNLESS OTHERWISE NOTED.

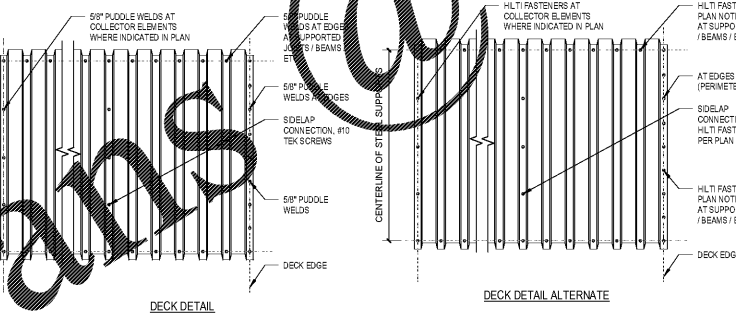
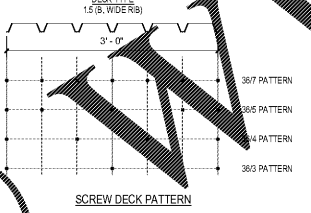
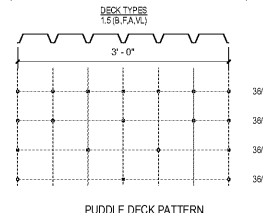
**1 General Mechanical Equipment**

SCALE: 3/4" = 1'-0"



MINIMUM DECK PROPERTIES	1.5 B
NOMINAL DEPTH 1 1/2"	
TYPE 3 (WIDE RIB) PAINTED METAL DECK	
F <sub>y</sub> 33 ksi	
Z <sub>x</sub> GAUGE: #0.189 IN/FT; S <sub>p</sub> =#186 IN <sup>3</sup> /FT; S <sub>x</sub> =#0.192 IN <sup>3</sup> /FT	
Z <sub>y</sub> GAUGE: #0.212 IN/FT; S <sub>p</sub> =#234 IN <sup>3</sup> /FT; S <sub>x</sub> =#0.147 IN <sup>3</sup> /FT	
18 GAUGE: #0.292 IN/FT; S <sub>p</sub> =#318 IN <sup>3</sup> /FT; S <sub>x</sub> =#0.327 IN <sup>3</sup> /FT	

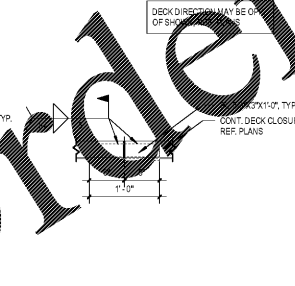
NOTES:  
 1. HLT FASTENING SYSTEM MAY BE SUBSTITUTED AS ALTERNATE EQUIPMENT UP TO 1/8" SHEAR CAPACITY. SEE REQ. DOCUMENTATION TO BE PROVIDED BY GC FOR REVIEW PRIOR TO USE.



**3 General Mtl. Deck & Closure Angle Info.**

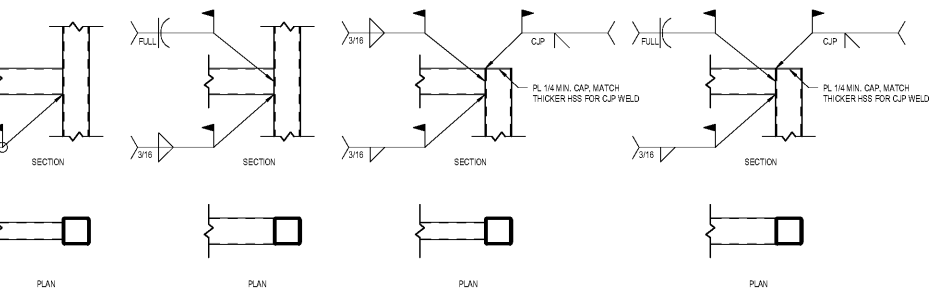
SCALE: 1" = 1'-0"

**CLOSURE ANGLE CONNECTIONS**



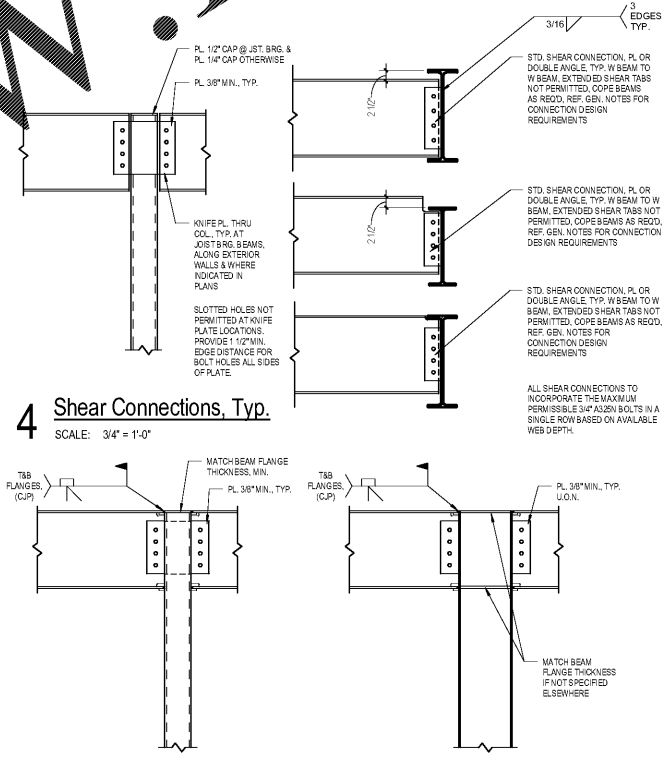
**6 HSS to HSS Weld Connections, Typ.**

SCALE: 3/4" = 1'-0"



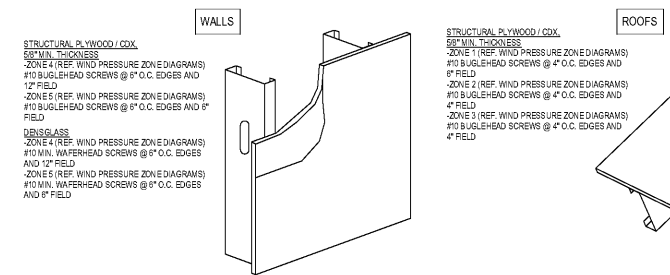
**4 Shear Connections, Typ.**

SCALE: 3/4" = 1'-0"



**5 Moment Connections, Typ.**

SCALE: 3/4" = 1'-0"



**2 General Mtl. Deck & Closure Angle Info.**

SCALE: 1" = 1'-0"

**7 Sheathing Fastener Requirements**

SCALE: 3/4" = 1'-0"

Order Plans

WWW.LDLINE.COM

1925 Prospect Ave.  
Orlando, FL 32814  
P (407) 661-9100  
F (407) 661-9101  
www.ldline.com

White Development Company  
1801 South Keene Rd.  
Clearwater, FL 33756

Retail @ Tattersall Park  
US Highway 280 & Highway 119  
Hoover, AL



Revision	Number	Description	Date
A	100%	100% PUNCH	06/07/18
B	1	1" THICK DECK SURF	7/26/18

S005