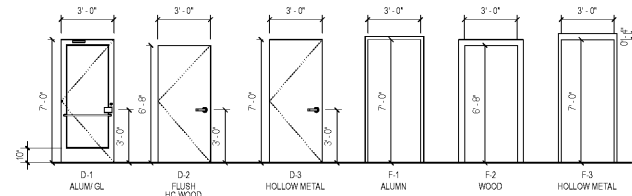


Door Schedule													
DOOR LETTER		RETAIL NUMBER											
DOOR	TYPE	LOCATION	SIZE	MATERIAL	FRAME	MATERIAL	DETAILS	GLASS	TEMP.	HARDWARE	REMARKS		
D-1	FRONT DR	3'-0" X 7'-0"	1'-3 1/4"	ALUM	F-1	ALUM	H1, J1, S1	FULL FRAME	X 1/4" THICK	TEMP.	1	FINAL CORE PROCESS FOR LOCKSETS & KEYING	KAMNEER 350 MEDIUM STYLE
D-2	REAR DR	3'-0" X 7'-0"	1'-3 1/4"	HM	F-3	HM	H3, J3, S3	-	-	-	3	SUBCONTRACTORS WILL INSTALL ALL DOORS, FRAMES, HARDWARE & LOCKSETS	HM DOOR PAINT FINISH LATEX GLOSS ENAMEL HOLLOW CORE PRESHING DOOR PAINT GRADE
D-2	TOILET DR	3'-0" X 6'-8"	1'-3 1/4"	HC WOOD	F-2	WOOD	H2, J2, S2	-	-	-	2		PAINT TO MATCH STUCCO
D-2	FRIBER RM	3'-0" X 7'-0"	1'-3 1/4"	HM	F-3	HM	H3, J3, S3	-	-	-	4		

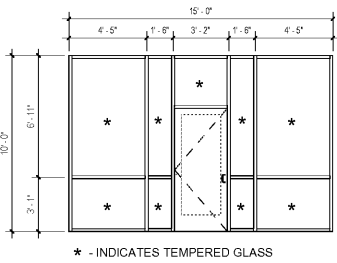
**DOOR AND FRAME NOTES**

- REAR DOOR AND FRAME TO BE PAINTED ON EXT SIDE ONLY
- TOILET WOOD DOOR AND FRAME TO BE PAINTED BOTH SIDES WITH ENAMEL PAINT
- UNDERCUT TOILET ROOM DOOR, COORDINATE WITH MECHANICAL

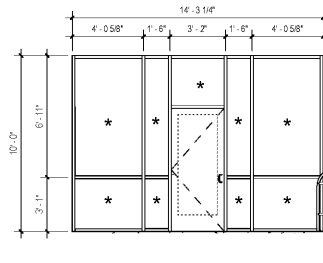


**1 Door & Frame Types**  
SCALE: 1/4" = 1'-0"

HARDWARE NOTES & SCHEDULE		
1 ADJUST ALL CLOSERS TO A 5 LB MAX OPENING FORCE	HARDWARE SET #1 (KAMNEER SINGLE ENTRANCE DOOR)	HARDWARE SET #5 (REAR EXIT DOOR)
2 CONTRACTOR TO SUBMIT TYPE WRITTEN SHOP DRAWINGS AND PRODUCT LITERATURE FOR ALL DOORS AND HARDWARE SPECIFIED. PREPARED BY A LICENSED AND CERTIFIED CONSULTANT.	(1) SET SINGLE ACTING OFFSET PIVOT HINGES BY KAMNEER (1) DOOR CLOSER - INHIBIT 1008 SURFACE CLOSER (1) 4" EXTRUDED - MILL FINISH ALUMINUM THRESHOLD (FOR OFFICE PIVOT AND OVERHEAD CLOSERS) (1) ADAMS RITE 1850 DEADLOCK LATCH COMBINATION (1) ADAMS RITE 4500 LATCH PADLOCK DEVICE (1) ADAMS RITE STANDARD LATCH STRIKE AS REQUIRED (1) CYLINDER - SCHLAGE (P/N) MORTISE - MATCH DOOR FINISH (1) 1" DOOR PUSH & GO PULL #14 CLEAR ANODIZE FINISH (1) SEAL AIR WEATHERING SYSTEM AND DROM BLADE SURFACE AT ADJACENT SWEEP STRIP	(1) 1/2" PARR HAGER 4 1/2" X 1 1/2" BUTT FULL MORTISE HINGES NO. 881181 FINISH 280 (3) STAINLESS STEEL FINISH 280 (1) LOCKSET - SCHLAGE AL SERIES SINGLE ACTING LEVER W KEY LOCK HEAVY DUTY MOUNTED IN ROOM (1) SET FULL WEATHERS STRIP (1) ALUMINUM THRESHOLD
3 ALL EXTERIOR HOLLOW CORE METAL DOORS ARE TO BE INSULATED. DOOR AND FRAME TO BE SHOP PRIMED AND PAINTED	(1) ADAMS RITE 1850 DEADLOCK LATCH COMBINATION (1) CYLINDER - SCHLAGE (P/N) MORTISE - MATCH DOOR FINISH (1) 1" DOOR PUSH & GO PULL #14 CLEAR ANODIZE FINISH (1) SEAL AIR WEATHERING SYSTEM AND DROM BLADE SURFACE AT ADJACENT SWEEP STRIP	(1) 1/2" PARR HAGER 4 1/2" X 1 1/2" BUTT FULL MORTISE HINGES NO. 881181 FINISH 280 (3) STAINLESS STEEL FINISH 280 (1) LOCKSET - SCHLAGE AL SERIES SINGLE ACTING LEVER W KEY LOCK HEAVY DUTY MOUNTED IN ROOM (1) SET FULL WEATHERS STRIP (1) ALUMINUM THRESHOLD
4 ALL LOCK AND PASSAGE SETS TO BE SCHLAGE GRADE OR BETTER. SUBMIT OTHERS FOR APPROVAL. LOCKS NEED TO BE REKEYABLE.	(1) CONTRACTOR INSTALLED NOTE: *DOOR TO REMAIN UNLOCKED DURING TIME OPERATION*	
5 SUBMIT DETAILED HARDWARE SCHEDULE FOR ARCHITECT'S APPROVAL.	HARDWARE SET #2 (RESTROOM DOOR)	HARDWARE SET #4 (FRIBER ROOM DOOR)
6 ALL DOORS AND HARDWARE TO COMPLY WITH THE SOUTH CAROLINA ACCESSIBILITY CODES AND THE ADA FEDERAL REGULATION CODES, UTILIZING ALUM LATCH OR LOCKSET	(1) 1/2" PARR HAGER 4 1/2" X 1 1/2" BUTT FULL MORTISE HINGES NO. 1191 FINISH 26 D, (3) STAINLESS STEEL FINISH 26 D (1) LOCKSET - SCHLAGE AL SERIES "SATURN" FINISH 606 PRIVACY LOCK (1) CLOSER - LON NO. 1460 FINISH US28D MOUNTED IN ROOM (1) WALL STOP	(1) 1/2" PARR HAGER 4 1/2" X 1 1/2" BUTT FULL MORTISE HINGES NO. 881181 FINISH 280 (3) STAINLESS STEEL FINISH 280 (1) LOCKSET - SCHLAGE AL SERIES SINGLE ACTING LEVER W KEY LOCK HEAVY DUTY MOUNTED IN ROOM (1) SET FULL WEATHERS STRIP (1) ALUMINUM THRESHOLD
7 ALL STORE FRONT SYSTEM DOORS AND REAR EXIT DOORS SHALL BE INDIVIDUALLY KEYED. PROVIDE 2 SETS OF KEYS FOR EACH TENANT SPACE.		
8 ALL RETAIL HARDWARE TO BE MASTER KEYED (FRONT AND REAR DOORS TO USE SAME KEY. UTILIZING CONSTRUCTION CODES/LOCKERS THAT ARE TO BE REPLACED AT TUNDOVERS BY GC (INCLUDING FURNISHING SIX (6) NEW KEYS FOR EACH UNIT)		

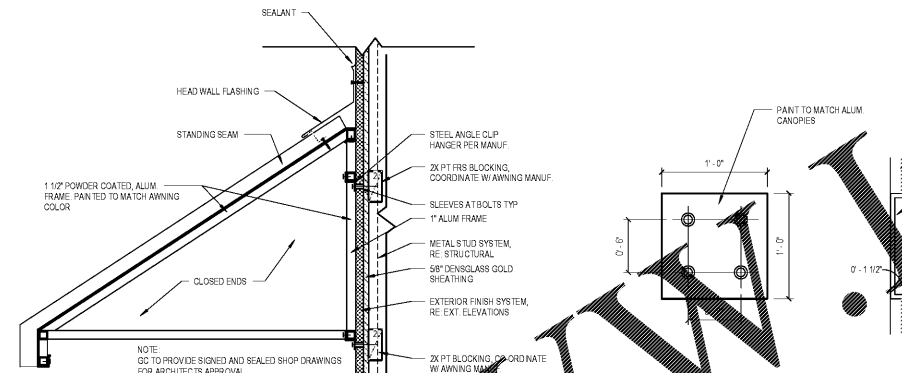


**2 Storefront Type 'A'**  
SCALE: 1/4" = 1'-0"

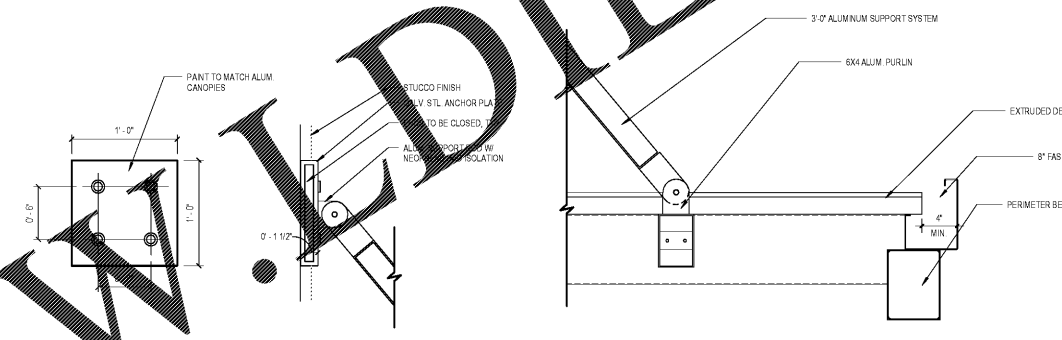


**2A Storefront Type 'B'**  
SCALE: 1/4" = 1'-0"

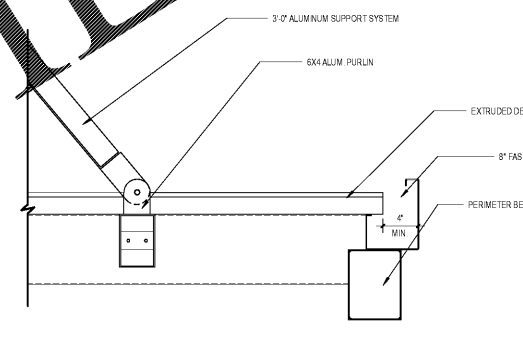
STOREFRONT NOTES	
NOTES	
1	STOREFRONT ALUM. FINISH TO BE CLEAR ANODIZED
2	GLAZING TO BE INSULATED, NON IMPACT RATED
3	BASIS OF DESIGN - I-PG 8MM SOLORBAN 70XL (2) ON STARPHIRE - 067 PVB - 8MM CLEAR + 1/2" AIR + 8MM CLEAR
a.	LOW E GLASS
b.	1/2" FACTOR OF 48
c.	SHGC OF .26
d.	ALL PAVES TO BE TEMPERED



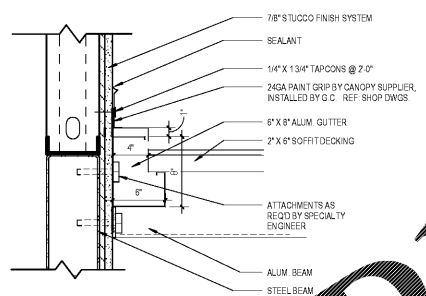
**3 Awning Detail**  
SCALE: 1 1/2" = 1'-0"



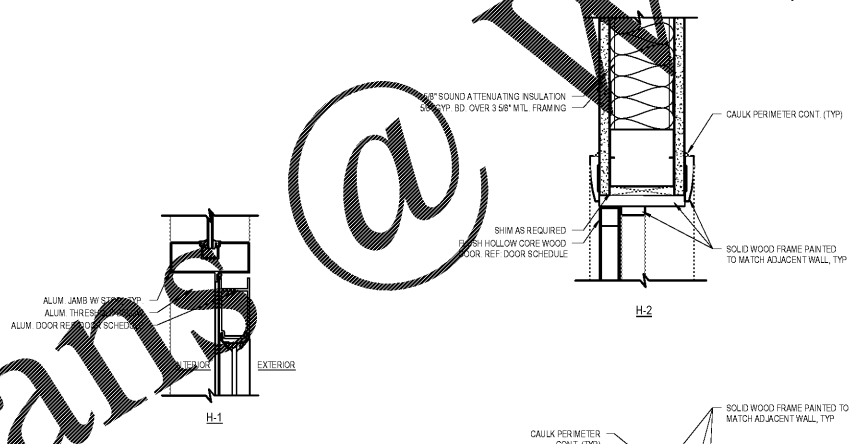
**4 Alum. Canopy Support Detail**  
SCALE: 1 1/2" = 1'-0"



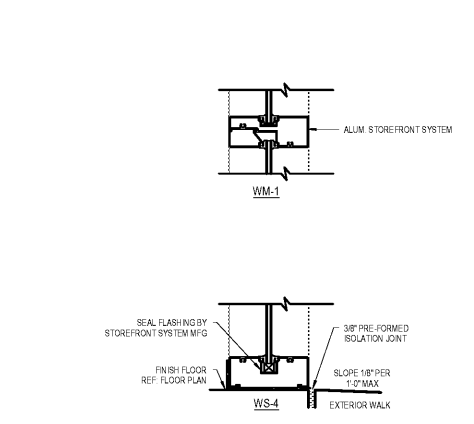
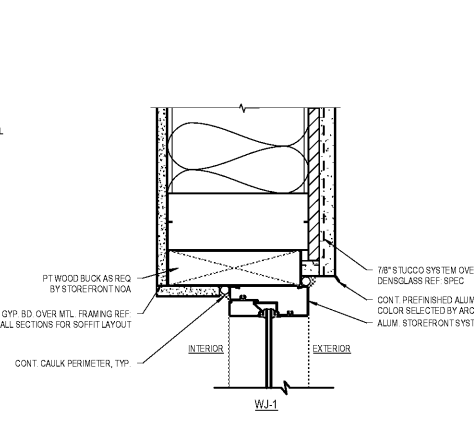
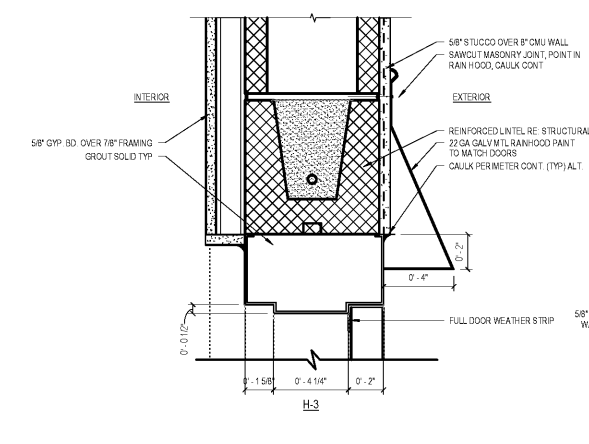
**5 Alum. Canopy Detail**  
SCALE: 1 1/2" = 1'-0"



**6 Alum. Canopy Connection Detail**  
SCALE: 1 1/2" = 1'-0"



**7 Head, Jamb, & Sill Details**  
SCALE: 3" = 1'-0"



**10 WS-4 Detail**  
SCALE: 3" = 1'-0"

Order Plans @ WWW.WDLine.com

1925 PROSPECT AVE  
Orlando, FL 32814  
P (407) 661-9100  
F (407) 661-9101  
www.wdline.com

**White Development Company**  
1801 South Keene Rd.  
Clearwater, FL 33756

**Retail @ Tattersall Park**  
US Highway 280 & Highway 119  
Hoover, AL

**White Development Company**  
1801 South Keene Rd.  
Clearwater, FL 33756

Revision Schedule		Date
A	100% PUBLISH	06-07-18
B	ISSUE TO BIDDING	7-26-18

**A601**