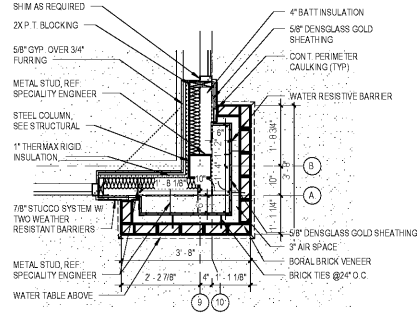
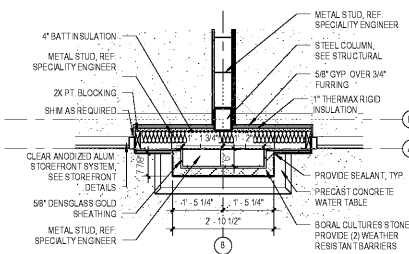


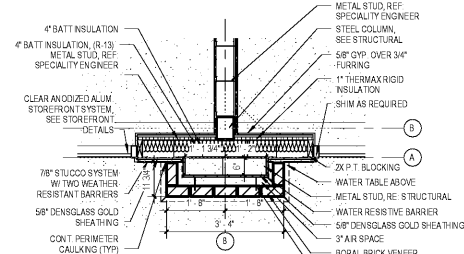
**3 Corner Pilaster Detail @ 4'-0"**  
SCALE: 1/2" = 1'-0"



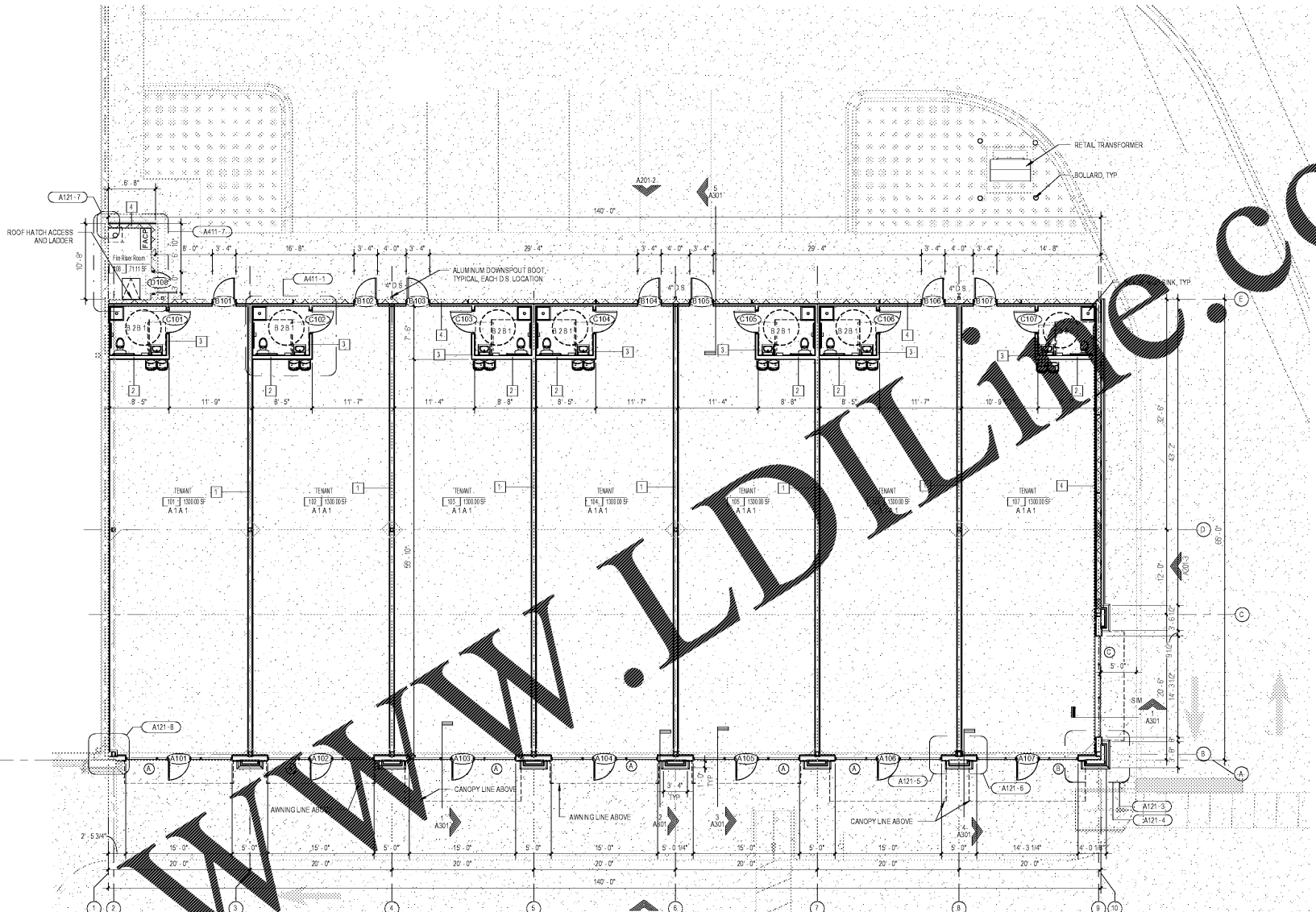
**4 Corner Pilaster Detail @ 2'-0"**  
SCALE: 1/2" = 1'-0"



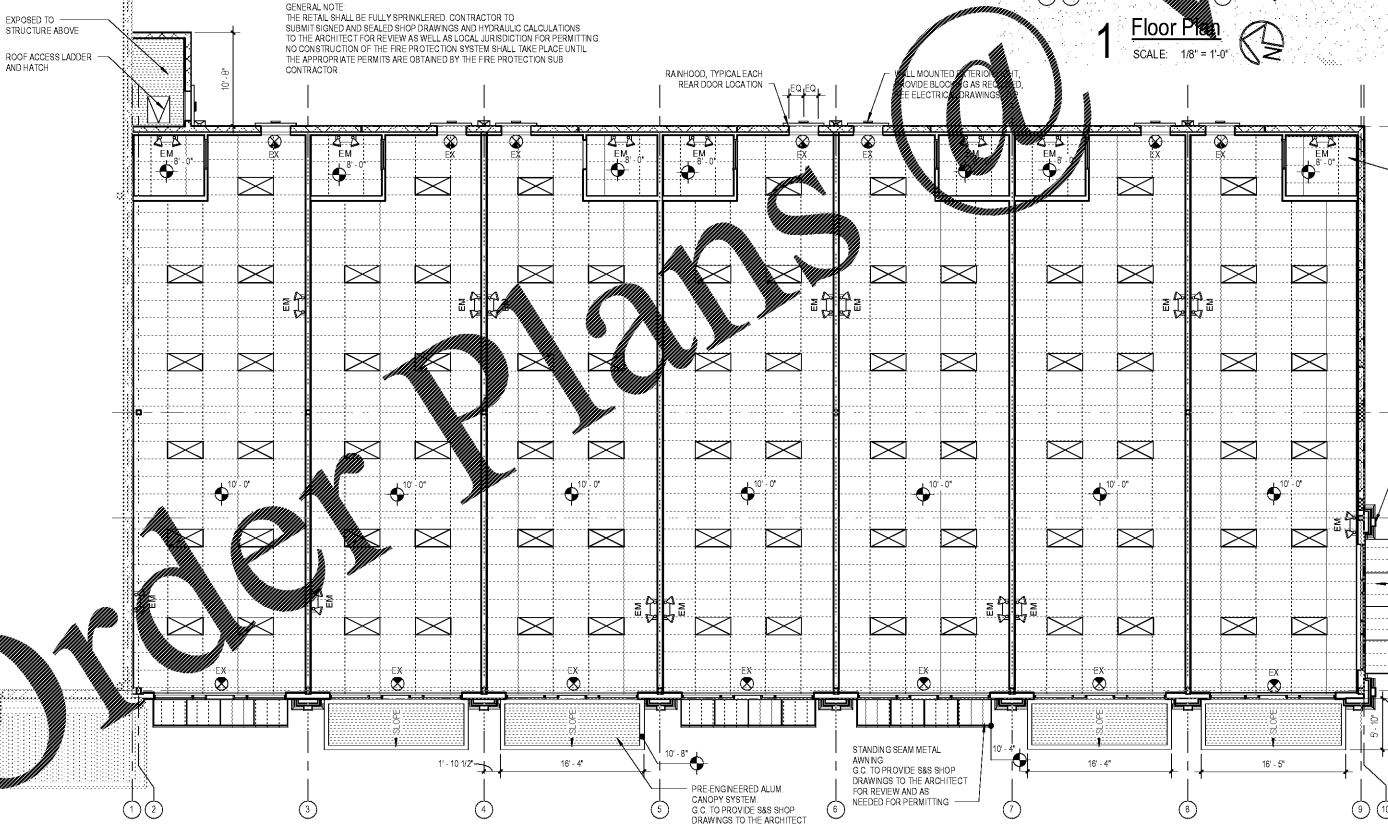
**5 Pilaster Detail @ 4'-0"**  
SCALE: 1/2" = 1'-0"



**6 Pilaster Detail @ 2'-0"**  
SCALE: 1/2" = 1'-0"



**1 Floor Plan**  
SCALE: 1/8" = 1'-0"



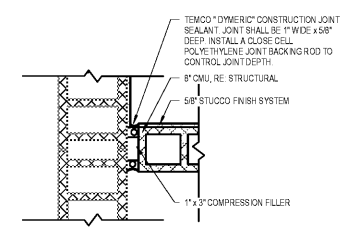
**2 Reflected Ceiling Plan**  
SCALE: 1/8" = 1'-0"

**Reflected Ceiling Plan Legend**

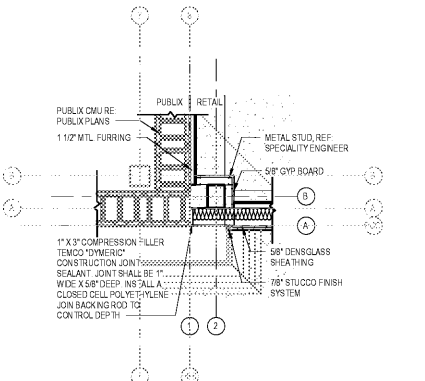
SYMBOL	DESCRIPTION
(EM)	EMERGENCY EXIT SIGN, RE: ELECTRICAL
(EM)	EMERGENCY EXIT LIGHT, RE: ELECTRICAL
(EM)	EXTERIOR EMERGENCY EXIT LIGHT, RE: ELECTRICAL
(ACT)	2X4 ACOUSTIC CEILING TILE (ACT)
(ACT)	2X2 ACOUSTIC CEILING TILE (ACT)
(L)	2X4 LIGHT FIXTURE, RE: ELECTRICAL
(L)	2X2 LIGHT FIXTURE, RE: ELECTRICAL
(R)	2X2 RETURN REGISTER, RE: MECHANICAL
(D)	2X2 SUPPLY DIFFUSER, RE: MECHANICAL
(H)	CEILING ACCESS HATCH
(H)	ROOF ACCESS HATCH

**Finish Schedule**

FLOOR MATERIAL	WALL BASE MATERIAL	WALL MATERIAL	CEILING MATERIAL
A REALD CONCRETE	1 NONE	A PAINT READY	1 ACOUSTICAL LAY-IN TILE
B VCT TILE	2 VINYL	B ENAMEL PAINTED GYPSUM BOARD	2 PAINTED GYPSUM BOARD
C CERAMIC TILE	3 CERAMIC	C CERAMIC TILE	3 EXPOSED W/L DECKING
D NOT USED	4 NOT USED	D ENAMEL PAINTED CONC BLOCK	4 NOT USED



**7 Expansion Joint Plan Detail**  
SCALE: 1" = 1'-0"



**8 Expansion Joint Plan Detail**  
SCALE: 1/2" = 1'-0"

1925 PROSPECT AVE  
Orlando, FL 32814  
P (407) 661-9100  
F (407) 661-9101  
www.r.p.a.com

**White Development Company**  
1801 South Keene Rd  
Clearwater, FL 33756

**Retail @ Tattersall Park**  
US Highway 280 & Highway 119  
Hoover, AL

**White Development Company**  
1801 South Keene Rd  
Clearwater, FL 33756

PROJECT NAME: Retail @ Tattersall Park  
PROJECT NO: 7668  
DATE: 07-25-18  
DRAWN BY: J. Smith  
CHECKED BY: J. Smith

**White Development Company**  
1801 South Keene Rd  
Clearwater, FL 33756

**A121**