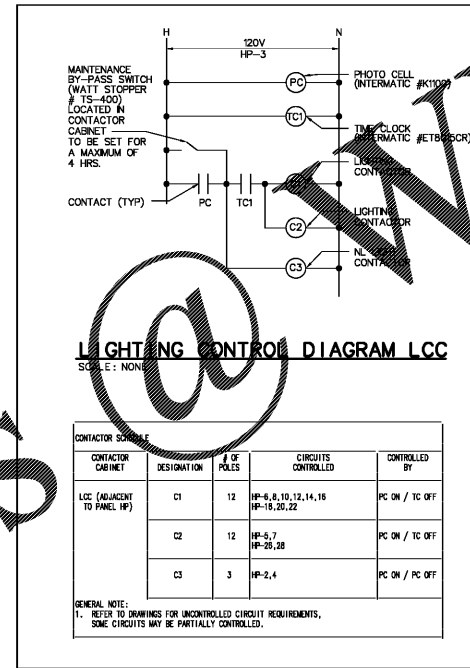


# Order Plans

| LUMINAIRE SCHEDULE |                   |         |                                     |  |                     |              |
|--------------------|-------------------|---------|-------------------------------------|--|---------------------|--------------|
| MARK               | LUMINAIRE WATTAGE | MANUF.  | CATALOG NUMBER                      | DESCRIPTION  | MOUNTING            | POWER SUPPLY |
|                    |                   |         |                                     |  |                     | QTY.         |
| 61                 | 220               | BEACON  | (2) VFL-96L-220-4K7-4W-208-6-VH1    | POLE MOUNTED LED SITE LIGHTING FIXTURE AT 35'                    | ARM MOUNTED ON POLE | LED X        |
| 62                 | 220               | BEACON  | (2) VFL-96L-220-4K7-4W-208-6-VH1-BC | POLE MOUNTED LED SITE LIGHTING FIXTURE AT 35'                    | ARM MOUNTED ON POLE | LED X        |
| 63                 | 180               | BEACON  | (3) VFL-96L-150-4K7-3-6-208-6-VH1   | POLE MOUNTED LED SITE LIGHTING FIXTURE AT 35'                    | ARM MOUNTED ON POLE | LED X        |
| 64                 | 220               | BEACON  | (1) VFL-96L-220-4K7-4W-208-6-VH1    | POLE MOUNTED LED SITE LIGHTING FIXTURE AT 35'                    | ARM MOUNTED ON POLE | LED X        |
| 68                 | 220               | BEACON  | (2) VFL-96L-220-4K7-4W-208-6-VH1    | POLE MOUNTED LED SITE LIGHTING FIXTURE AT 35'                    | ARM MOUNTED ON POLE | LED X        |
| 68                 | 220               | BEACON  | (1) VFL-96L-220-4K7-4W-208-6-VH1-BC | POLE MOUNTED LED SITE LIGHTING FIXTURE AT 35'                    | ARM MOUNTED ON POLE | LED X        |
| 67                 | 220               | BEACON  | (2) VFL-96L-220-4K7-4W-208-6-VH1-BC | POLE MOUNTED LED SITE LIGHTING FIXTURES AT 35'                   | ARM MOUNTED ON POLE | LED X        |
| 68                 | 220               | BEACON  | (1) VFL-96L-220-4K7-4W-208-6-VH1    | POLE MOUNTED LED SITE LIGHTING FIXTURES AT 35'                   | ARM MOUNTED ON POLE | LED X        |
| POLE               |                   | PRECAST |                                     | 4" LONG SQUARE TAPERED CONCRETE POLE WITH BURIAL DEPTH OF 6'-00" |                     |              |
| E12                | 55                | BEACON  | (1) TRX40-54NB-55-4K7-3-6-208-6-VH1 | WALL MOUNTED LED SITE LIGHTING FIXTURE                           | SURFACE AT 10'      | LED X        |

- NOTES:
- NO ALTERNATES WILL BE ACCEPTED.
  - CONTRACTOR SHALL BE REQUIRED TO OBTAIN CALCULATIONS FROM THE POLE MANUFACTURER, SEAL BY A STRUCTURAL ENGINEER LICENSED IN THE STATE OF ALABAMA, TO CERTIFY WIND LOAD PERFORMANCE OF EACH ENTIRE POLE AND FIXTURE ASSEMBLY.



| CKT | DESCRIPTION               | BREAKER |      | LOAD  |     | CKT | DESCRIPTION | BREAKER |      | LOAD |       |
|-----|---------------------------|---------|------|-------|-----|-----|-------------|---------|------|------|-------|
|     |                           | TRIP    | POLE | VOLTY | KVA |     |             | CODE    | TRIP | POLE | VOLTY |
| 1   | (E) FAN                   | 20      | 1    | 120   | 0.7 | 7   | 3           |         |      |      |       |
| 2   | (E) CONTACTOR STOP        | 20      | 1    | 120   | 0.7 | 7   | 4           |         |      |      |       |
| 6   | (E) EXTERIOR LIGHTING     | 30      | 1    | 120   | 0.2 | 1   | 6           |         |      |      |       |
| 7   | (E) EXTERIOR LIGHTING     | 20      | 1    | 120   | 0.3 | 1   | 8           |         |      |      |       |
| 9   | SPACE                     | 20      | 1    | 120   |     | 10  |             |         |      |      |       |
| 11  | (E) IRRIGATION CONTROLLER | 20      | 1    | 120   | 0.5 | 7   | 12          |         |      |      |       |
| 13  | (E) RECT. TGFAN           | 20      | 1    | 120   | 0.2 | 7   | 14          |         |      |      |       |
| 15  | (E) IRR. T                | 30      | 2    | 208   | 3.6 | 7   | 16          |         |      |      |       |
| 17  | SPACE                     |         |      |       |     | 18  |             |         |      |      |       |
| 18  | SPACE                     | 20      | 1    | 120   |     | 20  |             |         |      |      |       |
| 21  | EXTERIOR LIGHTING         | 20      | 1    | 120   | 0.1 | 1   | 22          |         |      |      |       |
| 23  | RECEPTACLE                | 20      | 1    | 120   | 0.1 | 2   | 24          |         |      |      |       |
| 25  | SPACE                     |         |      |       |     | 26  |             |         |      |      |       |
| 27  | SPACE                     |         |      |       |     | 28  |             |         |      |      |       |
| 29  | SPACE                     |         |      |       |     | 30  |             |         |      |      |       |
| 31  | SPACE                     |         |      |       |     | 32  |             |         |      |      |       |
| 33  | SPACE                     |         |      |       |     | 34  |             |         |      |      |       |
| 35  | SPACE                     |         |      |       |     | 36  |             |         |      |      |       |
| 37  | SPACE                     |         |      |       |     | 38  |             |         |      |      |       |
| 39  | SPACE                     |         |      |       |     | 40  |             |         |      |      |       |
| 41  | SPACE                     |         |      |       |     | 42  |             |         |      |      |       |

| LOAD CODES                     | CONNECTED LOAD (KW) | DEMAND FACTOR           | DEMAND LOAD (KW) |
|--------------------------------|---------------------|-------------------------|------------------|
| 1 LIGHTING                     | 18                  | 1.25                    | 22.5             |
| 2 HEAT                         | 1                   | 1.00                    | 1.0              |
| 3 AIR CONDITIONING             | 1                   | 1.00                    | 1.0              |
| 4 MOTORS                       | 0                   | % OF LARGEST MOTOR      | 0.0              |
| 5 RECEPTACLES                  | 1                   | NESC 220.44             | 0.2              |
| 6 MISC. CONTINUOUS LOADS       | 0                   | 1.25                    | 0.0              |
| 7 MISC. NON-CONTINUOUS LOADS   | 6                   | 0.01                    | 0.0              |
| 8 KITCHEN EQUIPMENT (S. PRES.) | 0                   | 0.05                    | 0.0              |
| 9 HOTEL ROOM LOADS             | 0                   | 220.42                  | 0.0              |
|                                | 26                  |                         | 26.3             |
|                                | 0.0                 | LESS SMALLEST OF HEAT/C | 0.0              |
|                                |                     | TOTAL DEMAND LOAD       | 26.3             |
|                                |                     | VOLTAGE                 | 208              |
|                                |                     | PHASE                   | 3                |
|                                |                     | 81 AMPS                 |                  |

NOTES:  
 (1) PROVIDE W/PROF RECEPT. SIGN  
 (2) PROVIDE A BREAKER TIE FOR BRANCH CIRCUITS THAT ARE PART OF A MULTIWIRE BRANCH CIRCUIT HOMERUN

1925 Prospect Ave  
Orlando, FL 32814  
P (407) 661-9100  
F (407) 661-9101  
www.rjg.com

CLIENT NAME  
**White Development Company**  
1801 South Keene Road  
Clearwater, Florida 33766

PROJECT NAME  
**Publix @ Tattersall Park**  
NEC of U.S. Highway 280 & Highway 119  
Hoover, Alabama

| Rev. | Description             | Date    |
|------|-------------------------|---------|
| 1    | Issued for Bid & Permit | 7/20/16 |

CHECKED  
PC