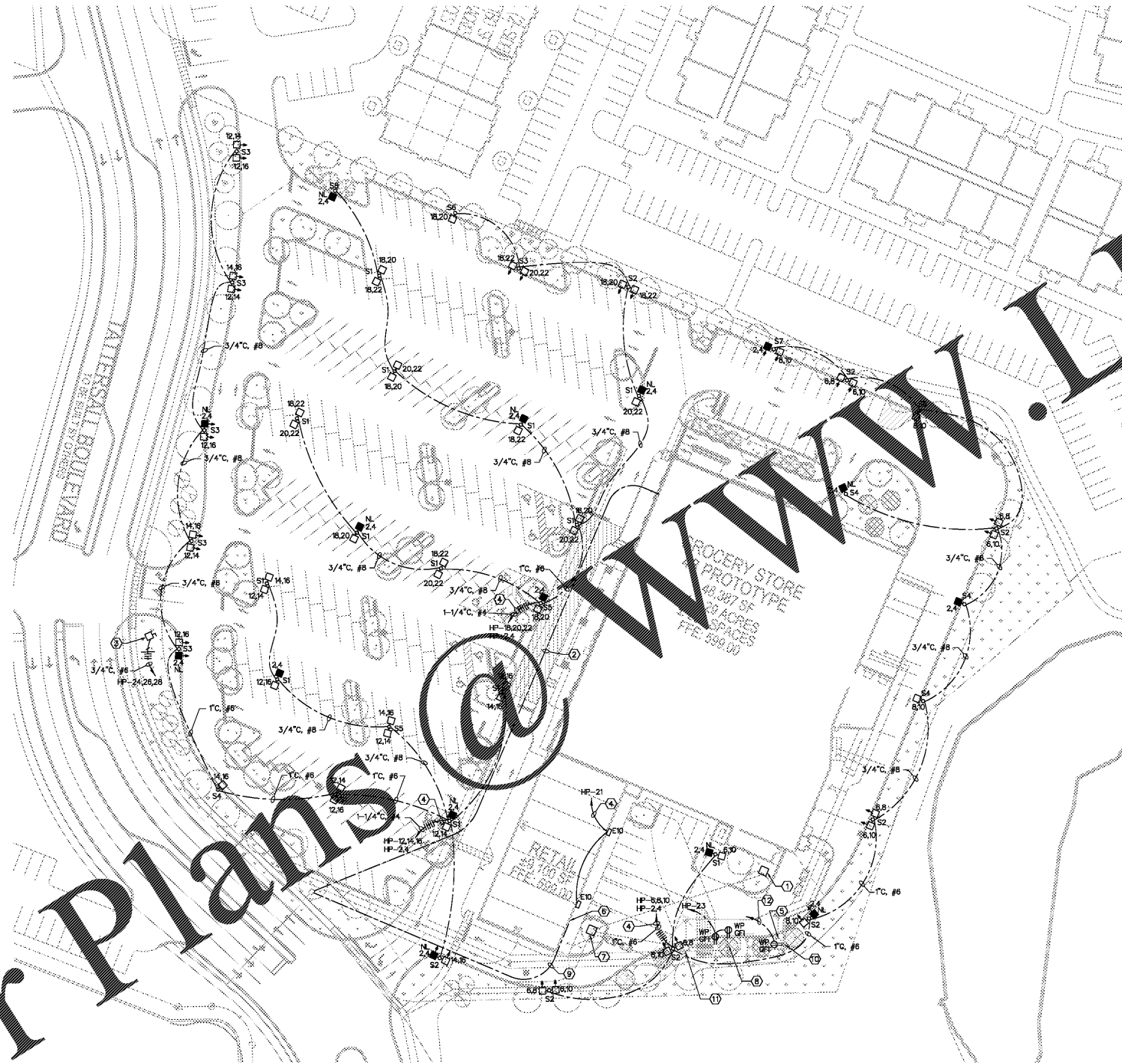
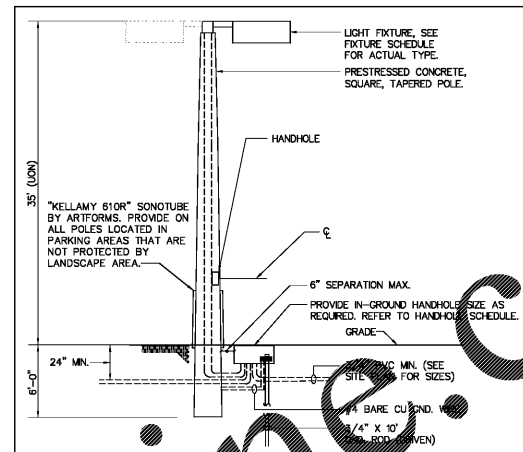


Order Plans



ELECTRICAL SITE PLAN
SCALE: 1"=40'-0"



PARKING LOT CONCRETE POLE DETAIL
SCALE: NONE

- GENERAL NOTES
1. AT EACH POLE LOCATION, THE CONTRACTOR SHALL PROVIDE A 3/4"X10" CONCRETE CLAD GROUND ROD CONNECTED TO A #4 BARE COPPER CONDUCTOR, CAST IN PLACE. EXTENDED TO TEMON SLIP FITTER. EQUIPMENT GROUNDING CONDUCTORS SHALL BE BONDED TO THE GROUND ROD. ALL CONNECTIONS TO THE GROUND ROD SHALL BE BY EXOTHERMIC WELD CONNECTION. ALL POLES ARE TO BE PROVIDED WITH HAND HOLES (MINIMUM 3"X5"). PROVIDE ALL HARDWARE NECESSARY TO COMPLETE THE INTENDED INSTALLATION.
 2. CONTRACTOR SHALL BE REQUIRED TO SUBMIT CALCULATIONS FROM THE POLE MANUFACTURER, SEALED BY A STRUCTURAL ENGINEER LICENSED IN THE STATE OF ALABAMA, TO CERTIFY CONFORMANCE OF EACH ENTIRE POLE AND FIXTURE ASSEMBLY TO THE FOLLOWING STANDARDS:
 - A. 90 MPH IN ACCORDANCE WITH AASHTO SPECIFICATIONS.
 3. CONTRACTOR IS TO FURNISH AND INSTALL IN-LINE BALLAST FUSES IN BUSBARM THROUGH WEATHERPROOF FUSE HOLDERS #HE3-SERIES WITH KIT FUSES (SIZE AS REQUIRED). FUSE EACH LUMINAIRE SEPARATELY. LOCATE FUSES IN HANDHOLE OF POLE.
 4. AN IN-GROUND HANDHOLE SHALL BE INSTALLED AT EVERY POLE LOCATION WHETHER OR NOT INDICATED ON THE DRAWINGS. THE HANDHOLE SHALL BE SIZED TO CONTAIN ALL CONNECTOR KITS, AND GROUND RODS. ALL CONNECTIONS IN HANDHOLE SHALL BE MADE WITH WATERPROOF, SNAP-LOCK GEL FILLED CONNECTOR KITS EQUAL TO CMC #0SR2/0 OR RAYCHEM #0TAP-2 AND KING "DRY-CONN" WIRE NUTS FOR FUSE TO FIXTURE CONNECTION.

MARK	DESCRIPTION
INH SMALL	POLYMER CONCRETE, UL LISTED, HANDHOLE WITH BOLT DOWN COVER AND OPEN BOTTOM. COVER TO BE LIFT OUT, LOCKING TYPE WITH (2) HEX HEAD BOLTS. COVER TO INDICATE "ELECTRIC". NOMINAL BOX SIZE 11" X 16" X 12" QUARTZITE #P11188412/P1118840-17, LANDSCAPED AREAS - UL TIER 5 QUARTZITE #P11188412/P1118840-17, PAVED PARKING AREAS - UL TIER 10
INH MEDIUM	POLYMER CONCRETE, UL LISTED, HANDHOLE WITH BOLT DOWN COVER AND OPEN BOTTOM. COVER TO BE LIFT OUT, LOCKING TYPE WITH (2) HEX HEAD BOLTS. COVER TO INDICATE "ELECTRIC". NOMINAL BOX SIZE 12" X 18" X 12" QUARTZITE #P1324818/P1324800-17, LANDSCAPED AREAS - UL TIER 5 QUARTZITE #P1324818/P1324800-17, PAVED PARKING AREAS - UL TIER 10
INH LARGE	POLYMER CONCRETE, UL LISTED, HANDHOLE WITH BOLT DOWN COVER AND OPEN BOTTOM. COVER TO BE LIFT OUT, LOCKING TYPE WITH (2) HEX HEAD BOLTS. COVER TO INDICATE "ELECTRIC". NOMINAL BOX SIZE 17" X 26" X 24" QUARTZITE #P1732824/P1732800-17, LANDSCAPED AREAS - UL TIER 5 QUARTZITE #P1732824/P1732800-17, PAVED PARKING AREAS - UL TIER 10

- NOTES
1. CONDUITS TO BE STUBBED A MINIMUM OF 4" ABOVE GRAVEL.
 2. FURNISH AND INSTALL GRAVEL IN BOTTOM OF HANDHOLE FOR DRAINAGE IN ACCORDANCE WITH MANUFACTURER'S INSTRUCTIONS.
 3. ALL CONNECTIONS IN HANDHOLE SHALL BE MADE WITH WATERPROOF, SNAP-LOCK GEL FILLED CONNECTOR KITS EQUAL TO CMC #0SR2/0 OR RAYCHEM #0TAP-2 AND KING "DRY-CONN" WIRE NUTS FOR FUSE TO FIXTURE CONNECTION.

- NOTES
1. APPROXIMATE LOCATION OF UTILITY COMPANY PAD MOUNTED TRANSFORMER WITH 120/208 VOLT SECONDARY. EC SHALL COORDINATE CONCRETE PAD INSTALLATION WITH UTILITY COMPANY AND PUBLIX INTERIOR CONTRACTOR.
 2. APPROXIMATE LOCATION OF PVC FOR TELEPHONE. EC SHALL PROVIDE (2) 3" PVC CONDUITS WITH PULL STRINGS AND EXTEND TO EDGE OF PROPERTY AS SHOWN FOR TELEPHONE CONDUCTORS. EC SHALL EXTEND CONDUITS TO WITHIN 5' OF BUILDING IN LOCATION SHOWN AND COORDINATE CONNECTION TO TELEPHONE CONDUITS EXTENDED FROM PUBLIX WITH INTERIOR CONTRACTOR. EC SHALL ALSO PROVIDE (1) 4" WITH PULL-STRING IN A SEPARATE TRENCH FROM FOR DATA.
 3. APPROXIMATE LOCATION OF PYLON SIGN. PROVIDE 30/3/NEMA 3R DISCONNECT AT SIGN FOR CIRCUITS SHOWN. ROUTE CONDUCTORS THRU LIGHTING CONTACTOR. COORDINATE EXACT LOCATION WITH SIGN CONTRACTOR PRIOR TO ROUGH-IN.
 4. ROUTE CIRCUITS MA LIGHTING CONTACTOR.
 5. APPROXIMATE LOCATION OF DOUBLE DETECTOR CHECK VALVE. PROVIDE TAMPER SWITCH AND FIRE ALARM CONDUCTORS IN 3/4" TO PUBLIX FAOP.
 6. APPROXIMATE LOCATION OF PANEL 'HP'.
 7. APPROXIMATE LOCATION OF UTILITY COMPANY PAD MOUNTED TRANSFORMER WITH 120/208 VOLT SECONDARY. EC SHALL COORDINATE CONCRETE PAD INSTALLATION WITH UTILITY COMPANY.
 8. APPROXIMATE LOCATION OF IRRIGATION CONTROLLER.
 9. EC SHALL PROVIDE (2) 4" FOR RETAIL TELEPHONE SERVICE.
 10. APPROXIMATE LOCATION OF BACKFLOW PREVENTER WITH HEATED COVER.
 11. APPROXIMATE LOCATION OF PUMP STATION, FURNISHED AND INSTALLED BY OTHERS.
 12. EC SHALL EXTEND 3/4" WITH PULL STRING TO PUBLIX ELECTRICAL ROOM. STUB-UP AND CAP. COORDINATE STUB-UP LOCATION WITH PUBLIX INTERIOR EC.

GENERAL NOTE

1. ALL SITE LIGHTING CONDUCTORS SHALL BE #10 AWG IN 3/4" C. UON.

1925 Prospect Ave.
Orlando, FL 32814
P (407) 661-9100
F (407) 661-9101
www.colwill.com

Colwill Engineering
Architects & Engineers

CLIENT NAME
White Development Company
1801 South Keene Road
Clearwater, Florida 33756

PROJECT NAME
Publix @ Tattersall Park
NEC of U.S. Highway 280 & Highway 119
Hoover, Alabama

Rev.	Description	Date
1	Issued for Bid & Permit	7/20/18

PROJECT NO.	DATE	SCALE	CHECKED
210000	07-26-18	AS SHOWN	EC

Job Number: 51222
ES1.0

Colwill Engineering
Consulting Engineers, Inc.
Engineering Business No. CA-22812
4700 Red Adams Drive, Tampa, Florida 33606
Tel: 813-961-0000 Fax: 813-961-0004
© 2018. ALL RIGHTS RESERVED