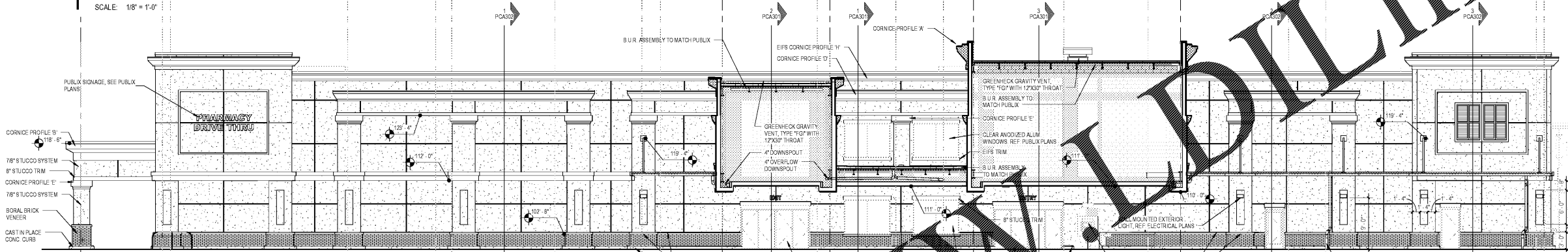
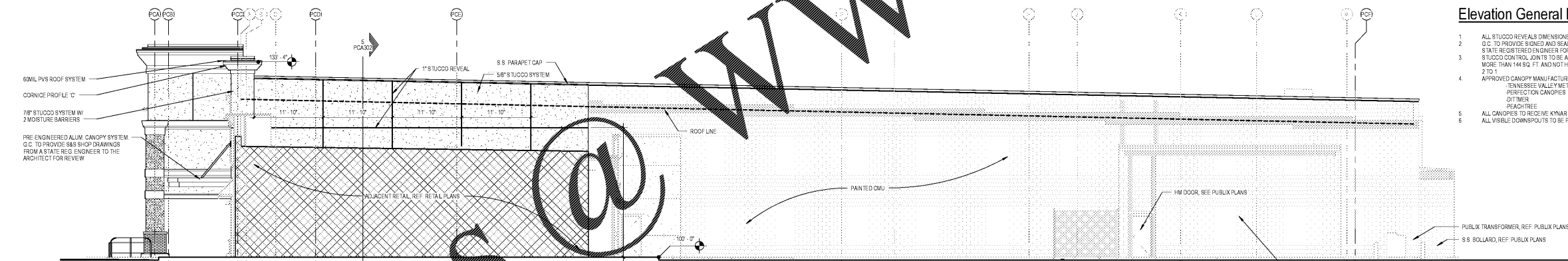


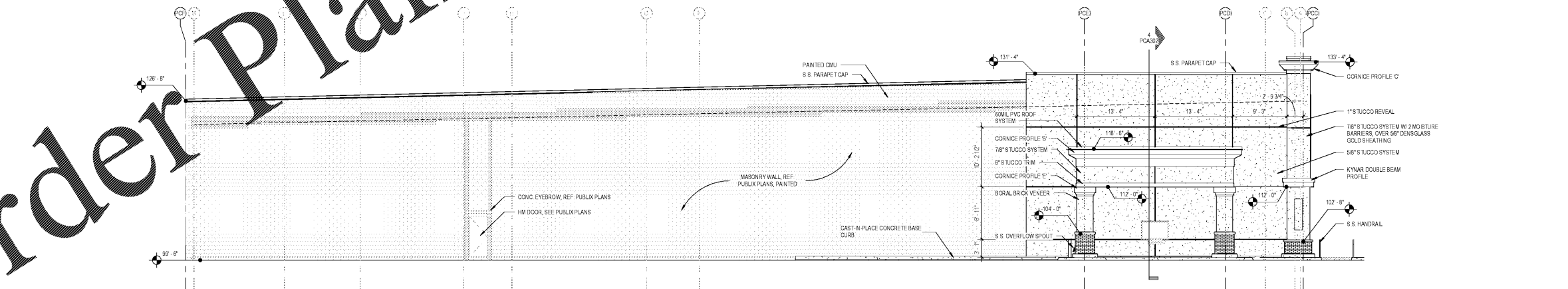
**1 Publix Canopy Front Elevation - South**  
SCALE: 1/8" = 1'-0"



**2 Publix Under Canopy Elevation**  
SCALE: 1/8" = 1'-0"



**3 Publix Canopy Right Side - East**  
SCALE: 1/8" = 1'-0"



**4 Publix Left Side Elevation - West**  
SCALE: 1/8" = 1'-0"

**Elevation General Notes**

- 1 ALL STUCCO REVEALS DIMENSIONED FROM CENTER LINE
- 2 TO PROVIDE SIGNED AND SEALED SHOP DRAWINGS BY STATE REGISTERED ENGINEER FOR ALUM. CANOPY
- 3 STUCCO CONTROL JOINTS TO BE ADDED SO AS TO ALLOW NO MORE THAN 144 SQ. FT. AND NOT HAVE A RATIO OF MORE THAN 2 TO 1
- 4 APPROVED CANOPY MANUFACTURERS ARE:  
TENNESSEE VALLEY METALS  
PERFECTION CANOPIES  
DITTMER  
PEACH TREE
- 5 ALL CANOPIES TO RECEIVE KYNAR FINISH
- 6 ALL VISIBLE DOWNSPOUTS TO BE PREFINISHED ALUM.

1925 PROSPECT AVE  
Orlando, FL 32814  
P (407) 661-9100  
F (407) 661-9101  
www.r.p.a.com

**White Development Company**  
1801 South Keene Road  
Clearwater, Florida 33766

**Publix @ Tattersall Park**  
NEC of U.S. Highway 280 & Highway 119  
Hoover, Alabama

**Publix Canopy Elevations**



Revision Schedule		Date
A	50% Public Submission	04/27/18
B	100% Public	04/07/18
C	100% Public	07/06/18
D	Issued to Bid & Permit	1/26/19

PCA200

Order Plans @ WWW.IDLINE.COM