

LUMINAIRE SCHEDULE

Table with columns: QTY, MARK, LUMINAIRE WATTAGE, MANUF., CATALOG NUMBER, DESCRIPTION, MOUNTING, POWER SUPPLY, QTY, TYPE, UL LISTED.

- NOTES: 1 ALL SUSPENDED FIXTURES (INCLUDING BUT NOT LIMITED TO LAY-IN TYPE) TO BE SECURED WITH AIRCRAFT CABLE IN EXPOSED AREAS AND CEILING WIRE IN CONCEALED AREAS. 2 CONTRACTOR SHALL USE #12 GA. MIN. OR MANUFACTURER SUPPLIED APPROVED CABLE OR WIRE.

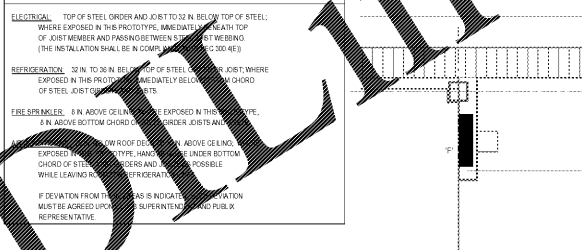
ELECTRICAL SYMBOL SCHEDULE

Table with columns: SYMBOL, MANUFACTURER, CAT. NO., DESCRIPTION, MOUNTING.

GENERAL ELECTRICAL NOTES

- 1 WALK IN REFRIGERATORS AND COOLERS PROVIDE AND INSTALL A SUITABLE LENGTH OF S.T.C. CONDUIT FROM EACH REFRIG. AND TONAGE OF COMPRESSOR COIL TO POWER RECEPTACLE TO BE EQUIPPED WITH A HUBBLE #751 CAP AND SUITABLE FOR CONNECTION TO A REFRIGERATED SPACE.

AREAS OF HORIZONTAL RUNS BY TRADES



PANEL BAKERY LOCATION SCALE: 1/2" = 1'-0"

LEVITON AND PASS & SEAMOUR (P&S) ARE APPROVED EQUALS

BLUET COVERS NOT REQUIRED ON RECEPTACLE SIDE OF EQUIPMENT EXCEPT FOR SEAFOOD AND MEAT

PANEL PASSAGE A SCALE: 1/2" = 1'-0"

PANEL PASSAGE B SCALE: 1/2" = 1'-0"

PANEL DELI SCALE: 1/2" = 1'-0"

PANEL ELECTRIC ROOM 1/2" = 1'-0"

FRONT OFFICE PANELS LOCATION SCALE: 1/2" = 1'-0"



CORPORATE OFFICES, FACILITIES DESIGN BOX 407, LAKE LAND, FL 33062 (954) 368-5256 3300 PUBLIX CORPORATE PARKWAY, LAKE LAND, FL 32811-0911

PUBLIX FACILITIES DESIGN DEPARTMENT PROJECT MANAGER DAN W. KRUEGER PROJECT ENGINEER DAVID W. PUBLIX PROJECT ARCHITECT JOHN W. PUBLIX PROJECT ARCHITECT DAN W. PUBLIX PROJECT ARCHITECT DAN W. PUBLIX PROJECT ARCHITECT DAN W. PUBLIX PROJECT ARCHITECT DAN W.

JOHN W. KITCHENS, PE CIVIL/STRUCTURAL P.E. REG. 115195 GA. REG. 115195 TN. REG. 002341 VA. REG. 040150700

PAUL C. HARMAN, PE STRUCTURAL P.E. REG. 33959 GA. REG. 27740 SD. REG. 21754 AL. REG. 24935 TN. REG. 101855 NO. REG. 39573 VA. REG. 040205022

JOHN J. CARROLL, PE MECHANICAL P.E. REG. 43889 GA. REG. 021488 SD. REG. 20581 TN. REG. 115382 VA. REG. 040205476

ANTHONY CLEMENTI, PE MECHANICAL P.E. REG. 54781 GA. REG. 31882 SD. REG. 28489 TN. REG. 111382 NO. REG. 339984 VA. REG. 040205137

RAYMOND J. SIRIANNI, PE ELECTRICAL P.E. REG. 54385 GA. REG. 92508 SD. REG. 19743 AL. REG. 23065 TN. REG. 158338 NO. REG. 039963 VA. REG. 040205378

COPYRIGHT 2018 PUBLIX SUPER MARKETS, INC.

THESE CONSTRUCTION DOCUMENTS ARE THE PROPERTY OF PUBLIX SUPER MARKETS, INC. AND ARE NOT TO BE COPIED OR REUSED FOR ANY SPECIFIC BUILDING WITHOUT WRITTEN PERMISSION. THESE DRAWINGS SHALL NOT BE DISPUTED WITHOUT PRIOR WRITTEN PERMISSION OF PUBLIX SUPER MARKETS, INC.

THE DESIGN INDICATED IN THESE CONSTRUCTION DOCUMENTS DOES TO THE BEST OF MY KNOWLEDGE, INFORMATION, AND BELIEF, COMPLY WITH THE APPLICABLE MINIMUM BUILDING CODES.

PLOT DATE: August, 21 2018

Table with columns: No., Description, Date

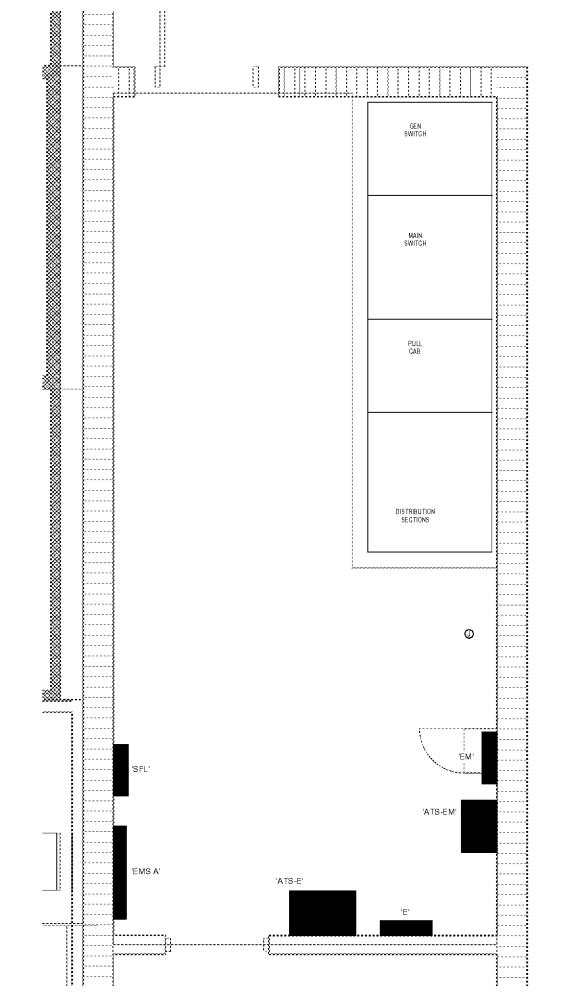
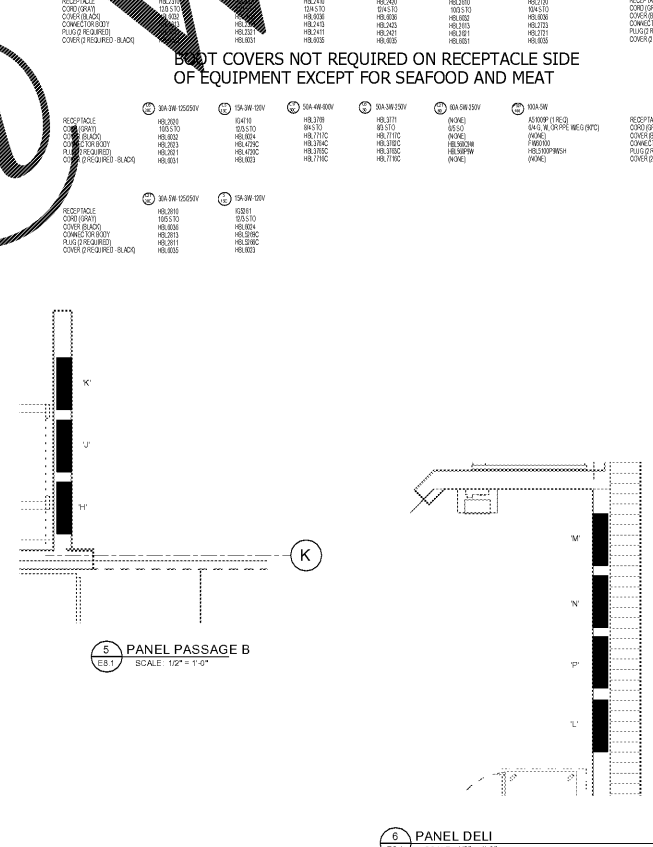
STORE NUMBER 1687 Tattersall Park US 280 & Highway 19 Hoover Shelby Co., AL

48.10 V1814.2018 SIENNA LITE

ELECTRICAL SCHEDULES AND ENLARGED ELEC. AREAS As indicated

E8.1

Order Plans



PERMIT SET DATE 8/29/2018 11:20:53 AM