

PLOT DATE:
August 21 2018

No.	Description	Date

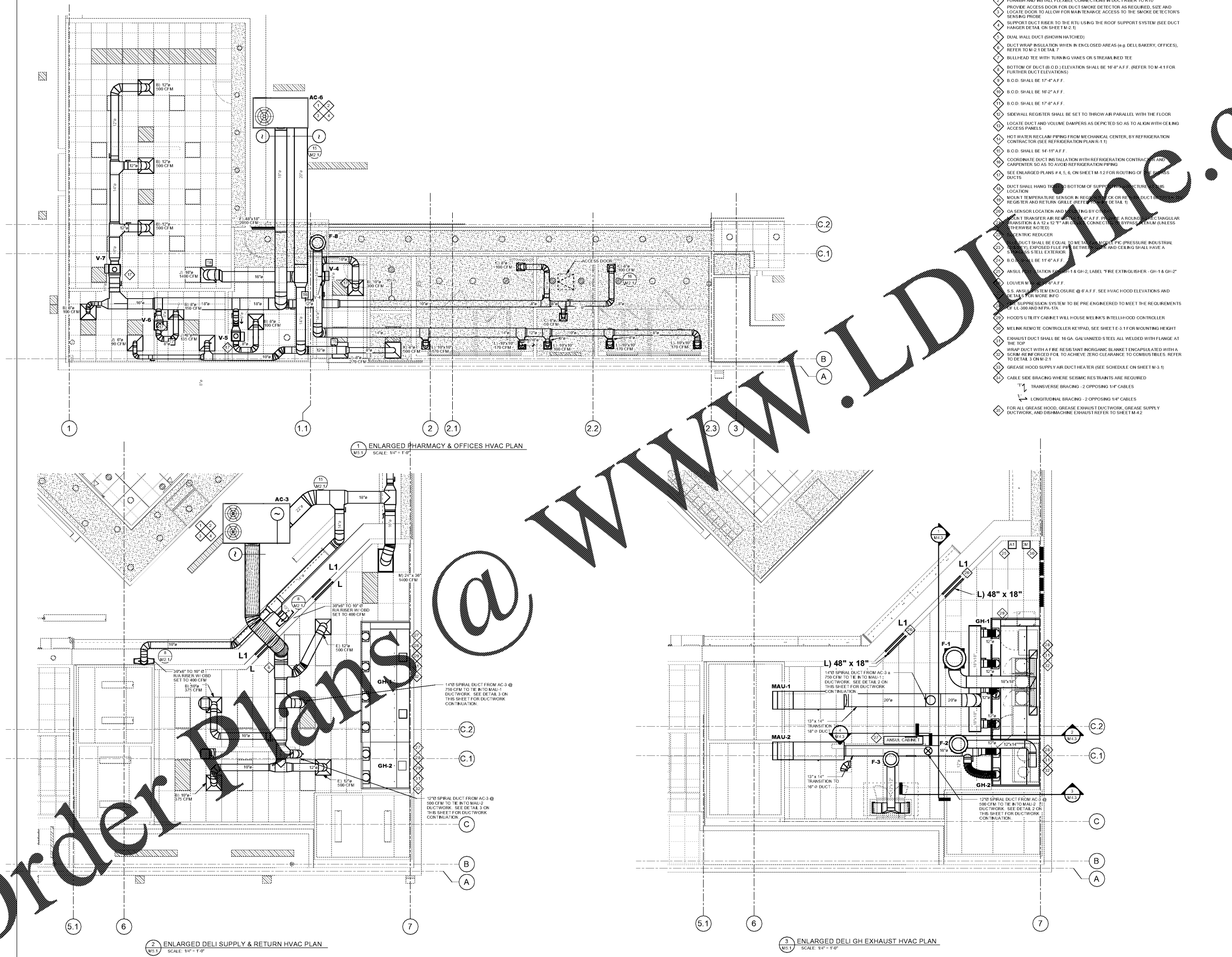
STORE NUMBER
1687
Tattersall Park
US 280 & Highway 19
Hoover
Shelby Co., AL

48.10
V1814.2018
SIENNA LITE

HVAC PARTIAL
PLANS

As indicated

M5.1



1 ENLARGED PHARMACY & OFFICES HVAC PLAN
M5.1 SCALE: 1/4" = 1'-0"

2 ENLARGED DELI SUPPLY & RETURN HVAC PLAN
M5.1 SCALE: 1/4" = 1'-0"

3 ENLARGED DELI GH EXHAUST HVAC PLAN
M5.1 SCALE: 1/4" = 1'-0"

- ◇ UNIT, CURB & HUMIDISTAT ARE SUPPLIED BY PUBLIX AND INSTALLED BY MECHANICAL CONTRACTOR (REFER TO CURB DETAIL ON SHEET M-2.1)
- ◇ FURNISH AND INSTALL FLEXIBLE CONNECTIONS IN DUCT RISER TO RTU
- ◇ PROVIDE ACCESS DOOR FOR DUCT SMOKE DETECTOR AS REQUIRED. SEE AND LOCATE DOOR TO ALLOW FOR MAINTENANCE ACCESS TO THE SMOKE DETECTOR'S SENSING PROBE
- ◇ SUPPORT DUCT RISER TO THE RTU USING THE ROOF SUPPORT SYSTEM (SEE DUCT HANGER DETAIL ON SHEET M-2.1)
- ◇ DUAL WALL DUCT (SHOWN HATCHED)
- ◇ DUCT WRAP INSULATION WHEN IN ENCLOSED AREAS (e.g. DELI BAKERY, OFFICES). REFER TO M-2.1 DETAIL 7
- ◇ BULLHEAD TEE WITH TURNING VANES OR STREAMLINED TEE
- ◇ BOTTOM OF DUCT (B.O.D.) ELEVATION SHALL BE 16" A.F.F. (REFER TO M-4.1 FOR FURTHER DUCT ELEVATIONS)
- ◇ B.O.D. SHALL BE 17'-4" A.F.F.
- ◇ B.O.D. SHALL BE 16'-2" A.F.F.
- ◇ B.O.D. SHALL BE 17'-8" A.F.F.
- ◇ SIDEWALL REGISTER SHALL BE SET TO THROW AIR PARALLEL WITH THE FLOOR
- ◇ LOCATE DUCT AND VOLUME DAMPERS AS DEPICTED SO AS TO ALIGN WITH CEILING ACCESS PANELS
- ◇ HOT WATER RECLAIM PIPING FROM MECHANICAL CENTER, BY REFRIGERATION CONTRACTOR (SEE REFRIGERATION PLAN R-1.1)
- ◇ B.O.D. SHALL BE 14'-11" A.F.F.
- ◇ COORDINATE DUCT INSTALLATION WITH REFRIGERATION CONTRACTOR AND CARPENTERS SO AS TO AVOID REFRIGERATION PIPING
- ◇ SEE ENLARGED PLANS # 4, 5, & ON SHEET M-1.2 FOR ROUTING OF THE BRASS DUCTS
- ◇ DUCT SHALL HANG TO BOTTOM OF SUPPLY AIR DISTRIBUTION REGISTER LOCATION
- ◇ MOUNT TEMPERATURE SENSOR IN REGISTER CHECK OR RETURN DUCT REGISTER AND RETURN GRILLE (REFER TO DETAIL 1)
- ◇ GAS SENSOR LOCATION AND SETTING BY CONTRACTOR
- ◇ MEAT TRANSFER AIR REGISTER @ 6" A.F.F. PRESSURE AROUND RECTANGULAR TRANSITION & A 12" X 12" AIR-CURVE CONNECTOR BYPASS AT UNLESS OTHERWISE NOTED
- ◇ B.O.D. SHALL BE 11'-0" A.F.F.
- ◇ ANSUL CABINET @ 18" GH-2, LABEL "FIRE EXTINGUISHER - GH-1 & GH-2"
- ◇ LOUVER @ 18" A.F.F.
- ◇ S.S. ANSUL SYSTEM ENCLOSURE @ 6" A.F.F. SEE HVAC HOOD ELEVATIONS AND DETAILS FOR MORE INFO
- ◇ THE SUPPRESSION SYSTEM TO BE PRE-ENGINEERED TO MEET THE REQUIREMENTS OF UL-300 AND NFPA-17A
- ◇ HOOD'S UTILITY CABINET WILL HOUSE MELKIN'S INTELLIHOOD CONTROLLER
- ◇ MELKIN REMOTE CONTROLLER KEY-PAD, SEE SHEET E-3.1 FOR MOUNTING HEIGHT
- ◇ EXHAUST DUCT SHALL BE 16 GA. GALVANIZED STEEL ALL WELDED WITH FLANGE AT THE TOP
- ◇ WRAP DUCT WITH A FIRE RESISTANT INORGANIC BLANKET ENCAPSULATED WITH A SCRM-REINFORCED FOIL TO ACHIEVE ZERO CLEARANCE TO COMBUSTIBLES. REFER TO DETAIL 3 ON M-5.1
- ◇ GREASE HOOD SUPPLY AIR DUCT HEATER (SEE SCHEDULE ON SHEET M-3.1)
- ◇ CABLE SIDE BRACING WHERE SEISMIC RESTRAINTS ARE REQUIRED
- ◇ T1 TRANSVERSE BRACING - 2 OPPOSING 1/4" CABLES
- ◇ L1 LONGITUDINAL BRACING - 2 OPPOSING 1/4" CABLES
- ◇ FOR ALL GREASE HOOD, GREASE EXHAUST DUCTWORK, GREASE SUPPLY DUCTWORK, AND DISHWASHER EXHAUST REFER TO SHEET M-4.2

Order Plans @ WWW.LDLINE.COM