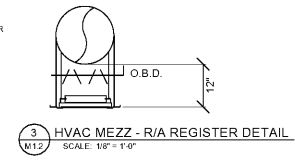


2 MEZZANINE DUCTWORK STRUCTURE COORDINATION
SCALE: 1/4" = 1'-0"

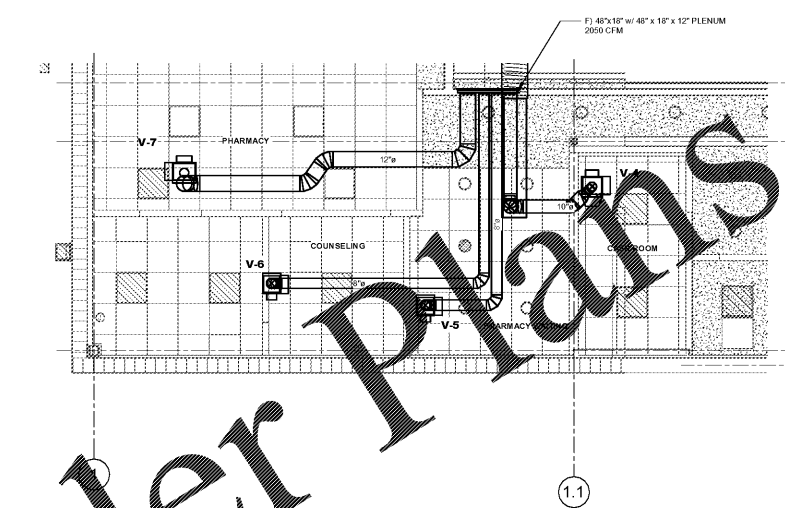
- UNIT CURBS & HANGERS ARE SUPPLIED BY PUBLIX AND INSTALLED BY MECHANICAL CONTRACTOR REFER TO CURB DETAIL ON SHEET M-2.1
- FURNISH AND INSTALL FLEXIBLE CONNECTIONS IN DUCT RISER TO RTU
- PROVIDE ACCESS DOOR FOR DUCT SMOKE DETECTOR AS REQUIRED, SIZE AND LOCATE DOOR TO ALLOW FOR MAINTENANCE ACCESS TO THE SMOKE DETECTOR'S SENSING PRIZE
- SUPPORT DUCT RISER TO THE RTU USING THE ROOF SUPPORT SYSTEM (SEE DUCT HANGING DETAIL ON SHEET M-2.1)
- DUAL WALL DUCT (SHOWN HATCHED)
- DUCT WRAP INSULATION, WHEN IN ENCLOSED AREAS (e.g. DELL BAKERY, OFFICES), REFER TO M-2.1 DETAIL 7
- BULLHEAD TEE WITH TURNING VANES OR STREAMLINED TEE
- BOTTOM OF DUCT (B.O.D.) ELEVATION SHALL BE 16'-8" A.F.F. (REFER TO M-4.1 FOR FURTHER DUCT ELEVATIONS)
- B.O.D. SHALL BE 17'-4" A.F.F.
- B.O.D. SHALL BE 18'-2" A.F.F.
- B.O.D. SHALL BE 17'-8" A.F.F.
- SIDEWALL REGISTER SHALL BE SET TO THROW AIR PARALLEL WITH THE FLOOR
- LOCATE DUCT AND VOLUME DAMPERS AS DEPICTED SO AS TO ALIGN WITH CEILING ACCESS PANELS
- HOT WATER RECLAIM PIPING FROM MECHANICAL CENTER, BY REFRIGERATION CONTRACTOR (SEE REFRIGERATION PLAN R-1.1)
- B.O.D. SHALL BE 14'-11" A.F.F.
- COORDINATE DUCT INSTALLATION WITH REFRIGERATION CONTRACTOR AND CARPENTER SO AS TO AVOID REFRIGERATION PIPING
- SEE ENLARGED PLANS # 4, 5, 6, ON SHEET M-1.2 FOR ROUTING OF THE BYPASS DUCTS
- DUCT SHALL HANG TIGHT TO BOTTOM OF SUPPORTING STRUCTURE AT THIS LOCATION
- MOUNT TEMPERATURE SENSOR IN REGISTER NECK OR RETURN DUCT BETWEEN THE REGISTER AND RETURN GRILLE (REFER TO M-2.1 DETAIL 1)
- CA SENSOR LOCATION AND MOUNTING BY OTHERS
- MOUNT TRANSFER AIR REGISTER AND PROVIDE A ROUND TO RECTANGULAR TRANSITION & 12" x 12" AIR DEVICE CONNECTED TO BYPASS PLENUM (UNLESS OTHERWISE NOTED)
- ECCENTRIC REDUCER
- FLUE DUCT SHALL BE EQUAL TO METAL FABRICATION PRESSURE INDUSTRIAL CHIMNEY, EXPOSED FLEE PIPE BETWEEN CURBS AND SHALL HAVE A STAINLESS STEEL EXTERIOR
- B.O.D. SHALL BE 11'-6" A.F.F.
- ANSUL PULL SYSTEM FOR GH-1 & CHIMNEY FIRE EXTINGUISHING & GH-2
- NOT USED
- WALL SYSTEM ENCLOSURE @ 8' A.F.F. SEE SHEET M-1.2 FOR ELEVATIONS AND FOR MORE INFORMATION
- FIRE PROTECTION SYSTEM TO BE PRE-ENGINEERED TO MEET THE REQUIREMENTS OF LOCAL CODES (NFPA-101)
- MEZZANINE UTILITY CABINET WILL HOUSE MELINK'S INTELLIHOOD CONTROLLER
- MEELINK REMOTE CONTROLLER KEYPAD, SEE SHEET E-3.1 FOR MOUNTING HEIGHT
- EXHAUST DUCT SHALL BE 18 GA. GALVANIZED STEEL ALL WELDED WITH FLANGE AT THE TOP
- WRAP DUCT WITH A FIRE RESISTANT INORGANIC BLANKET ENCAPSULATED WITH A SCUM-FREE IN FORCED FOR TO ACHIEVE ZERO CLEARANCE TO COMBUSTIBLES; REFER TO DETAIL 3 ON M-2.1
- GREASE HOOD SUPPLY AIR DUCT HEATER (SEE SCHEDULE ON SHEET M-3.1)
- CABLE SIDE BRACING WHERE SEISMIC RESTRAINTS ARE REQUIRED
- T-1 TRANSVERSE BRACING - 2 OPPOSING 1/4" CABLES
- L-1 LONGITUDINAL BRACING - 2 OPPOSING 1/4" CABLES
- FOR ALL GREASE HOOD, GREASE EXHAUST DUCTWORK, GREASE SUPPLY DUCTWORK, AND DRUMMACHINE EXHAUST REFER TO SHEET M-4.2

- LEGEND**
- 4-WAY DIFFUSER, AIR FLOW IN ALL DIRECTIONS
 - 3-WAY DIFFUSER, ARROW INDICATES AIR FLOW DIRECTION
 - 2-WAY DIFFUSER, ARROWS INDICATE AIR FLOW DIRECTION
 - 3-WAY DIFFUSER, ARROWS INDICATE AIR FLOW DIRECTION
 - DUCT SMOKE DETECTOR
 - DOOR GRILL REFER TO "N" ON AIR DEVICE SCHEDULE

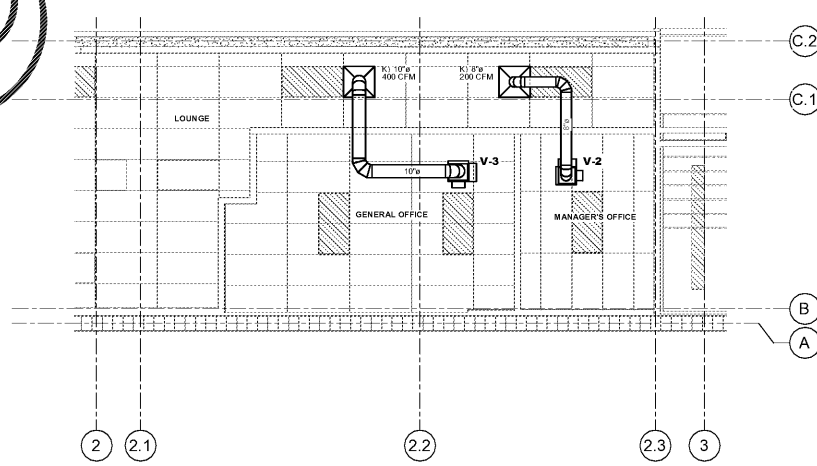


3 HVAC MEZZ - R/A REGISTER DETAIL
SCALE: 1/8" = 1'-0"

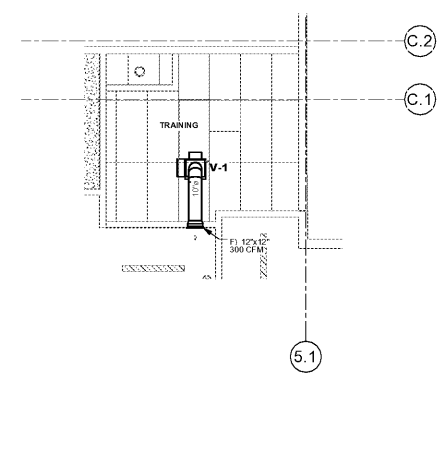
1 MEZZANINE HVAC FLOOR PLAN
SCALE: 1/8" = 1'-0"



4 LOWER LEVEL BYPASS DUCTWORK
SCALE: 1/4" = 1'-0"



5 MEZZANINE BYPASS DUCTWORK 1
SCALE: 1/4" = 1'-0"



6 MEZZANINE BYPASS DUCTWORK 2
SCALE: 1/4" = 1'-0"

PLOT DATE:
August 21 2018

No.	Description	Date

STORE NUMBER
1687
Tattersall Park
US 280 & Highway 19
Hoover
Shelby Co., AL

48.10
V814.2018
SIENNA LITE
MEZZANINE HVAC PLAN & BYPASS DUCTWORK LAYOUTS
As indicated

M1.2

Order Plans

WWW.LDIDLINE.COM