

DAVID L. BEEBE, PE
ARCHITECT FL REG. 15195
GA REG. 27740
AL REG. 24935
TN REG. 101507
NC REG. 35873
VA REG. 040205922

JOHN W. KITCHENS, PE
CIVIL/STRUCTURAL FL REG. 45277
GA REG. 27740
SD REG. 16340
AL REG. 24935
TN REG. 101507
VA REG. 040205922

PAUL C. HARMAN, PE
STRUCTURAL FL REG. 15195
GA REG. 27740
SD REG. 21754
AL REG. 24935
TN REG. 101507
NC REG. 35873
VA REG. 040205922

JOHN J. CARAMALIS, PE
MECHANICAL FL REG. 43883
GA REG. 102148
SD REG. 16340
AL REG. 24935
TN REG. 101507
VA REG. 040205922

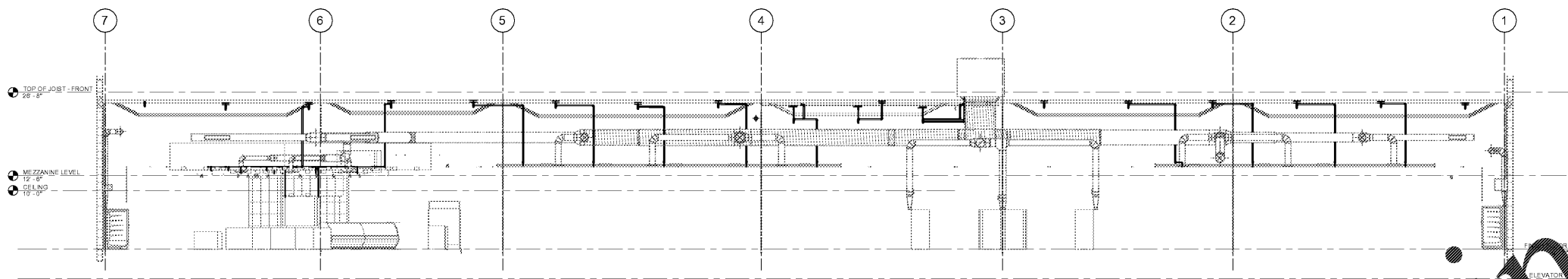
ANTHONY CLEMENTI, PE
MECHANICAL FL REG. 54781
GA REG. 31882
SD REG. 25591
AL REG. 24935
TN REG. 11182
NC REG. 33984
VA REG. 040205922

RAYMOND J. SIRIANNI, PE
ELECTRICAL FL REG. 54385
GA REG. 102148
SD REG. 16340
AL REG. 24935
TN REG. 101507
NC REG. 33984
VA REG. 040205922

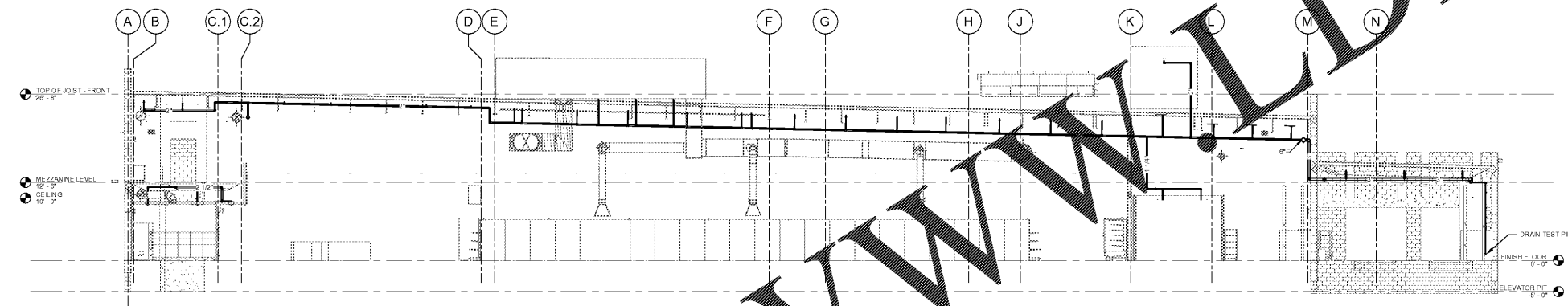
© COPYRIGHT 2018
PUBLIX SUPER MARKETS, INC.

THESE CONSTRUCTION DOCUMENTS ARE THE PROPERTY OF PUBLIX SUPER MARKETS, INC. AND ARE NOT TO BE COPIED OR REPRODUCED FOR ANY SPECIFIC BUILDING WITHOUT WRITTEN PERMISSION. THESE DRAWINGS SHALL NOT BE SUBMITTED WITHOUT PRIOR WRITTEN PERMISSION OF PUBLIX SUPER MARKETS, INC.

THE DESIGN INDICATED IN THESE CONSTRUCTION DOCUMENTS DOES TO THE BEST OF MY KNOWLEDGE, INFORMATION, AND BELIEF, COMPLY WITH THE APPLICABLE MINIMUM BUILDING CODES.



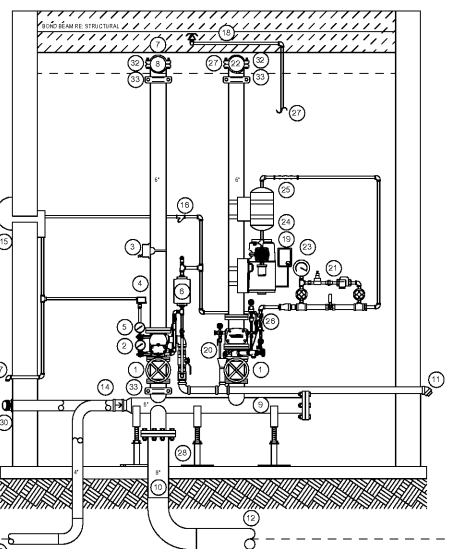
1 FIRE PROTECTION BUILDING SECTION 1
FP3.1 SCALE: 1/8" = 1'-0"



2 FIRE PROTECTION BUILDING SECTION 2
FP3.1 SCALE: 1/8" = 1'-0"

- 1 SUPERVISED OS&Y CONTROL VALVE WITH TAMPER SWITCH
- 2 FLANGED ALARM CHECK VALVE
- 3 WATER FLOW SWITCH
- 4 PRESSURE RELIEF VALVE CONNECT TO WATER MOTOR ALARM DRAN
- 5 WATER PRESSURE GAUGE
- 6 RETARD CHAMBER
- 7 GROOVED 90° ELBOW TO WET PIPE SPRINKLER SYSTEM
- 8 SYSTEM #1 (WET PIPE SYSTEM)
- 9 RISER MANIFOLD
- 10 WILKINS MODEL # MWR - S-S IN BUILDING RISER
- 11 2" DRAIN LINE
- 12 8" ELBOW FROM FIRE MAIN
- 13 TO FDC REFER TO CIVIL PLANS AND LOCAL AGENCY LOCATION
- 14 CHECK VALVE
- 15 WATER MOTOR ALARM BELL CONNECT TO ALARM PANEL AND DISCONNECT TO TRIM
- 16 STRAINER ON WATER LINE TO WATER MOTOR ALARM
- 17 1" WATER DRAN
- 18 GROOVED 90° ELBOW TO WET PIPE SPRINKLER SYSTEM
- 19 RISER MOUNTED AIR RELEASE VALVE: RP2.1 DTL 1
- 20 FLANGED AIR VALVE WITH ASSOCIATED TRIM AND QUICK OPENING DEVICE & F.A.P. TRIM
- 21 AIR MAINTENANCE DEVICE
- 22 SYSTEM #2 (DRY SYSTEM)
- 23 AIR PRESSURE GAUGE
- 24 RISER MOUNTED AIR RELEASE VALVE: RP2.1 DTL 1
- 25 AIR MAINTENANCE DEVICE
- 26 RISER MOUNTED AIR RELEASE VALVE: RP2.1 DTL 1
- 27 RISER MOUNTED AIR RELEASE VALVE: RP2.1 DTL 1
- 28 RISER MOUNTED AIR RELEASE VALVE: RP2.1 DTL 1
- 29 RISER MOUNTED AIR RELEASE VALVE: RP2.1 DTL 1
- 30 RISER MOUNTED AIR RELEASE VALVE: RP2.1 DTL 1
- 31 RISER MOUNTED AIR RELEASE VALVE: RP2.1 DTL 1
- 32 RISER MOUNTED AIR RELEASE VALVE: RP2.1 DTL 1
- 33 RISER MOUNTED AIR RELEASE VALVE: RP2.1 DTL 1
- 34 RISER MOUNTED AIR RELEASE VALVE: RP2.1 DTL 1
- 35 RISER MOUNTED AIR RELEASE VALVE: RP2.1 DTL 1
- 36 RISER MOUNTED AIR RELEASE VALVE: RP2.1 DTL 1
- 37 RISER MOUNTED AIR RELEASE VALVE: RP2.1 DTL 1
- 38 RISER MOUNTED AIR RELEASE VALVE: RP2.1 DTL 1
- 39 RISER MOUNTED AIR RELEASE VALVE: RP2.1 DTL 1
- 40 RISER MOUNTED AIR RELEASE VALVE: RP2.1 DTL 1
- 41 RISER MOUNTED AIR RELEASE VALVE: RP2.1 DTL 1
- 42 RISER MOUNTED AIR RELEASE VALVE: RP2.1 DTL 1
- 43 RISER MOUNTED AIR RELEASE VALVE: RP2.1 DTL 1
- 44 RISER MOUNTED AIR RELEASE VALVE: RP2.1 DTL 1
- 45 RISER MOUNTED AIR RELEASE VALVE: RP2.1 DTL 1
- 46 RISER MOUNTED AIR RELEASE VALVE: RP2.1 DTL 1
- 47 RISER MOUNTED AIR RELEASE VALVE: RP2.1 DTL 1
- 48 RISER MOUNTED AIR RELEASE VALVE: RP2.1 DTL 1
- 49 RISER MOUNTED AIR RELEASE VALVE: RP2.1 DTL 1
- 50 RISER MOUNTED AIR RELEASE VALVE: RP2.1 DTL 1
- 51 RISER MOUNTED AIR RELEASE VALVE: RP2.1 DTL 1
- 52 RISER MOUNTED AIR RELEASE VALVE: RP2.1 DTL 1
- 53 RISER MOUNTED AIR RELEASE VALVE: RP2.1 DTL 1
- 54 RISER MOUNTED AIR RELEASE VALVE: RP2.1 DTL 1
- 55 RISER MOUNTED AIR RELEASE VALVE: RP2.1 DTL 1
- 56 RISER MOUNTED AIR RELEASE VALVE: RP2.1 DTL 1
- 57 RISER MOUNTED AIR RELEASE VALVE: RP2.1 DTL 1
- 58 RISER MOUNTED AIR RELEASE VALVE: RP2.1 DTL 1
- 59 RISER MOUNTED AIR RELEASE VALVE: RP2.1 DTL 1
- 60 RISER MOUNTED AIR RELEASE VALVE: RP2.1 DTL 1
- 61 RISER MOUNTED AIR RELEASE VALVE: RP2.1 DTL 1
- 62 RISER MOUNTED AIR RELEASE VALVE: RP2.1 DTL 1
- 63 RISER MOUNTED AIR RELEASE VALVE: RP2.1 DTL 1
- 64 RISER MOUNTED AIR RELEASE VALVE: RP2.1 DTL 1
- 65 RISER MOUNTED AIR RELEASE VALVE: RP2.1 DTL 1
- 66 RISER MOUNTED AIR RELEASE VALVE: RP2.1 DTL 1
- 67 RISER MOUNTED AIR RELEASE VALVE: RP2.1 DTL 1
- 68 RISER MOUNTED AIR RELEASE VALVE: RP2.1 DTL 1
- 69 RISER MOUNTED AIR RELEASE VALVE: RP2.1 DTL 1
- 70 RISER MOUNTED AIR RELEASE VALVE: RP2.1 DTL 1
- 71 RISER MOUNTED AIR RELEASE VALVE: RP2.1 DTL 1
- 72 RISER MOUNTED AIR RELEASE VALVE: RP2.1 DTL 1
- 73 RISER MOUNTED AIR RELEASE VALVE: RP2.1 DTL 1
- 74 RISER MOUNTED AIR RELEASE VALVE: RP2.1 DTL 1
- 75 RISER MOUNTED AIR RELEASE VALVE: RP2.1 DTL 1
- 76 RISER MOUNTED AIR RELEASE VALVE: RP2.1 DTL 1
- 77 RISER MOUNTED AIR RELEASE VALVE: RP2.1 DTL 1
- 78 RISER MOUNTED AIR RELEASE VALVE: RP2.1 DTL 1
- 79 RISER MOUNTED AIR RELEASE VALVE: RP2.1 DTL 1
- 80 RISER MOUNTED AIR RELEASE VALVE: RP2.1 DTL 1
- 81 RISER MOUNTED AIR RELEASE VALVE: RP2.1 DTL 1
- 82 RISER MOUNTED AIR RELEASE VALVE: RP2.1 DTL 1
- 83 RISER MOUNTED AIR RELEASE VALVE: RP2.1 DTL 1
- 84 RISER MOUNTED AIR RELEASE VALVE: RP2.1 DTL 1
- 85 RISER MOUNTED AIR RELEASE VALVE: RP2.1 DTL 1
- 86 RISER MOUNTED AIR RELEASE VALVE: RP2.1 DTL 1
- 87 RISER MOUNTED AIR RELEASE VALVE: RP2.1 DTL 1
- 88 RISER MOUNTED AIR RELEASE VALVE: RP2.1 DTL 1
- 89 RISER MOUNTED AIR RELEASE VALVE: RP2.1 DTL 1
- 90 RISER MOUNTED AIR RELEASE VALVE: RP2.1 DTL 1
- 91 RISER MOUNTED AIR RELEASE VALVE: RP2.1 DTL 1
- 92 RISER MOUNTED AIR RELEASE VALVE: RP2.1 DTL 1
- 93 RISER MOUNTED AIR RELEASE VALVE: RP2.1 DTL 1
- 94 RISER MOUNTED AIR RELEASE VALVE: RP2.1 DTL 1
- 95 RISER MOUNTED AIR RELEASE VALVE: RP2.1 DTL 1
- 96 RISER MOUNTED AIR RELEASE VALVE: RP2.1 DTL 1
- 97 RISER MOUNTED AIR RELEASE VALVE: RP2.1 DTL 1
- 98 RISER MOUNTED AIR RELEASE VALVE: RP2.1 DTL 1
- 99 RISER MOUNTED AIR RELEASE VALVE: RP2.1 DTL 1
- 100 RISER MOUNTED AIR RELEASE VALVE: RP2.1 DTL 1

Order Plans @



3 FP - FIRE RISER SECTION
FP3.1 SCALE: 1/2" = 1'-0"

OWNER'S INFORMATION CERTIFICATE

Name and address of property to be protected with sprinkler protection:
Publix #1687, 1687 Tattersall Park, Hwy 280 & Highway 19, Hoover, AL 36030

Name of owner: Publix Super Markets, Inc. 1687 Tattersall Park, Hoover, AL 36030

Existing or planned construction to be protected:
 Fire-retardant or noncombustible
 Wood frame or ordinary masonry walls with wood beams
 Unfinished

Describe the intended use of the building: This building will be used by Publix Super Markets, Inc. to house and sell groceries and household items as well as prepare and serve food in a supervised setting.

Note regarding special occupancies: The design and installation of the fire sprinkler system is dependent on an accurate description of the likely use of the building. Without specific information, assumptions will be made to the fire sprinkler contractor in the form and that you advise by all comments regarding the use of this building based on the conditions of the fire applicable system that is specifically designed and installed.

Is the system installation intended for one of the following special occupancies:
 Aerosol heater: Yes No
 Fixed guide way stand system: Yes No
 Race track stable: Yes No
 Motors, turbines, elevators, or shafts: Yes No
 Aircraft terminal: Yes No
 Aircraft engine test facility: Yes No
 Power plant: Yes No
 Water cooling tower: Yes No

If the answer to any of the above is "yes," the appropriate NFPA standard should be referenced for sprinkler design/selection criteria.

Indicate whether any of the following special materials are known to be present:
 Flammable or combustible liquids: Yes No
 Aerosol products: Yes No
 Toxic flammable gas: Yes No
 Pyrophoric solids: Yes No
 Compressed or liquefied gas cylinders: Yes No
 Liquid or solid oxidizers: Yes No
 Organic peroxide formulators: Yes No
 Air pollutants: Yes No

If the answer to any of the above is "yes," describe type, location, arrangement, and standard minimum quantities.

Flammable, combustible liquids and aerosol products are stored on pallets in the loading dock area.

Item 128 (FF) 555 pallets are stored on the loading dock. Products can be loaded through the open front and can only be removed.

Indicate whether the protection is intended for one of the following specialized occupancies or areas:
 Spray area or mixing room: Yes No
 Laboratory animal operations: Yes No
 Oxygen-fuel gas systems for welding or cutting: Yes No
 Acetylene cylinder storage: Yes No
 Production or use of compressed or liquefied gases: Yes No
 Commercial cooking operation: Yes No
 Class II hazardous chamber: Yes No
 Cleanroom: Yes No
 Processor or media handling system: Yes No
 Laser handling system: Yes No
 Industrial furnace: Yes No
 Water-cooling tower: Yes No

If the answer to any of the above is "yes," describe type, location, arrangement, and standard minimum quantities.

Commercial cooking operations are present in the food and bakery departments. See Publix construction documents, M-1 through M-3 for location, arrangement and quantities.

Will there be any storage of products over 12 ft (3.66 m) in height?
 Yes No

If the answer is "yes," describe product, intended storage arrangement, and height.

Will there be any storage of plastic, rubber, or similar products over 5 ft (1.52 m) high subject as described above?
 Yes No

If the answer is "yes," describe product, intended storage arrangement, and height.

Is there any special information concerning the water supply?
 Yes No

If the answer is "yes," provide the information, including known environmental conditions that might be responsible for corrosion, including microbially influenced corrosion (MIC).

I certify that I have knowledge of the intended use of the property and that the above information is correct.

Signature of owner's representative or agent: _____ Date: _____

Name of owner's representative or agent (provide certificate number): Anthony Clementi

Manufacturer and form of agent (print): Mechanical Engineers, Publix Super Markets, Inc.

DATE: 05/22/2018 15:01:00

PLOT DATE:
August 21 2018

No.	Description	Date

STORE NUMBER
1687
Tattersall Park
US 280 & Highway 19
Hoover
Shelby Co., AL

48.10
SIENNA LITE

FIRE PROTECTION SECTIONS
As indicated
FP3.1