

PLOT DATE:
August 21 2018

No.	Description	Date

STORE NUMBER
1687
Tattersall Park
US 280 & Highway 19
Hoover
Shelby Co., AL

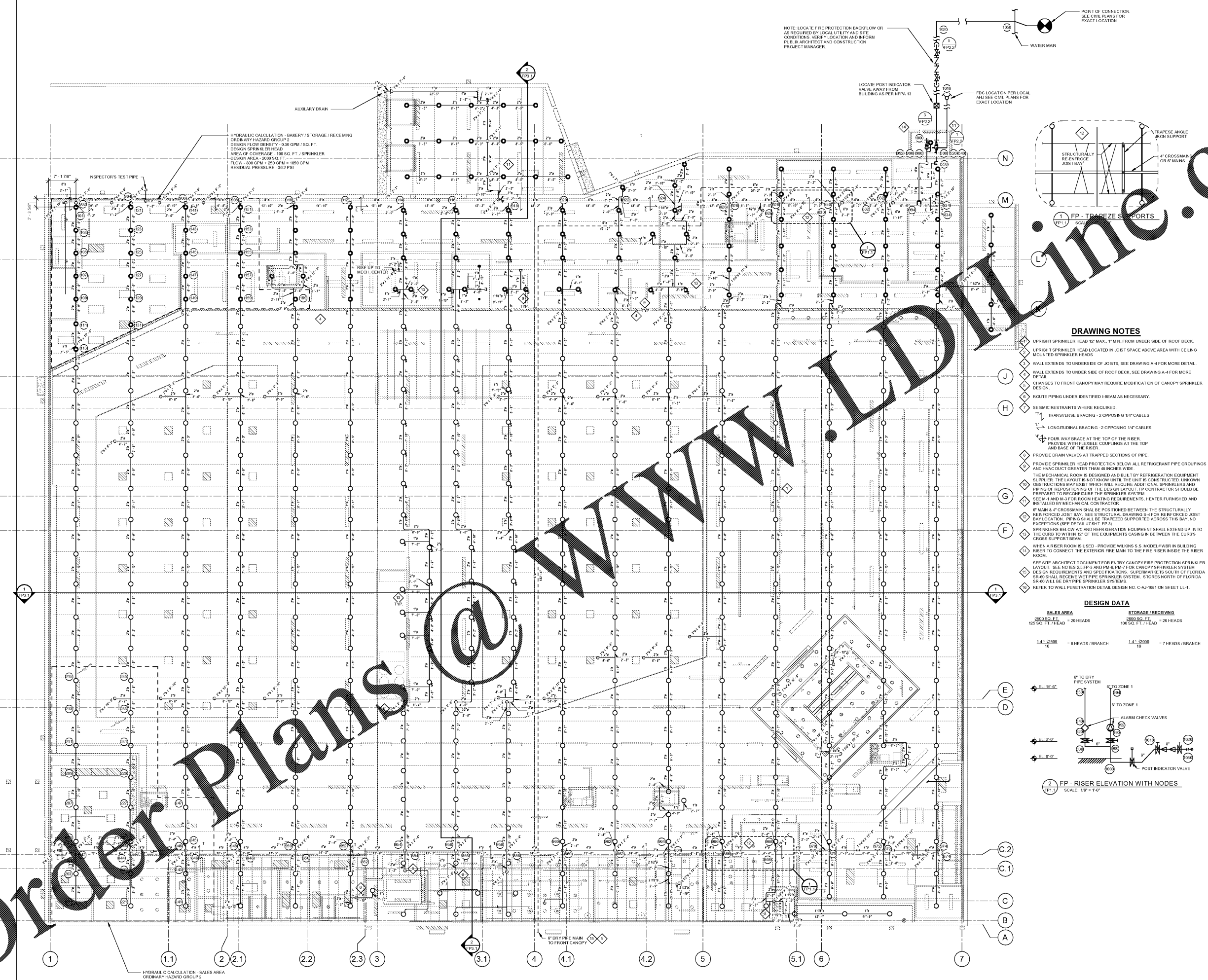
48.10
V814.2018
SIENNA LITE

FIRE PROTECTION PLAN-UPPER LEVEL

As indicated

FP1.1

PERMIT SET DATE 8/29/2018 11:24:17 AM



HYDRAULIC CALCULATION - BAKERY / STORAGE / RECEIVING
ORDINARY HAZARD GROUP 1
DESIGN FLOW DENSITY - 0.30 GPM / SQ. FT.
DESIGN SPRINKLER HEAD
AREA OF COVERAGE - 180 SQ. FT. / SPRINKLER
DESIGN AREA - 2000 SQ. FT.
FLOW - 600 GPM = 200 GPM + 1000 GPM
RESIDUAL PRESSURE - 34.2 PSI

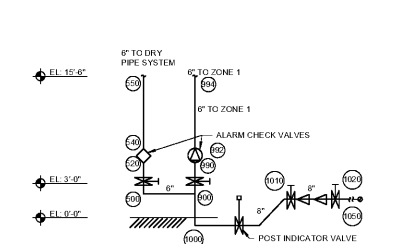
HYDRAULIC CALCULATION - SALES AREA
ORDINARY HAZARD GROUP 2
DESIGN FLOW DENSITY - 0.18 GPM / SQ. FT.
DESIGN SPRINKLER HEAD
AREA OF COVERAGE - 500 SQ. FT. / SPRINKLER
DESIGN AREA - 2500 SQ. FT.
FLOW - 477 GPM = 250 GPM + 727 GPM
RESIDUAL PRESSURE - 31.0 PSI

DRAWING NOTES

- 1 UPRIGHT SPRINKLER HEAD 1/2" MAX. 1" MIN. FROM UNDER SIDE OF ROOF DECK.
- 2 UPRIGHT SPRINKLER HEAD LOCATED IN JOIST SPACE ABOVE AREA WITH CEILING MOUNTED SPRINKLER HEADS.
- 3 WALL EXTENDS TO UNDERSIDE OF JOISTS, SEE DRAWING A-4 FOR MORE DETAIL.
- 4 WALL EXTENDS TO UNDER SIDE OF ROOF DECK, SEE DRAWING A-4 FOR MORE DETAIL.
- 5 CHANGES TO FRONT CANOPY MAY REQUIRE MODIFICATION OF CANOPY SPRINKLER DESIGN.
- 6 ROUTE PIPING UNDER IDENTIFIED I-BEAM AS NECESSARY.
- 7 SEISMIC RESTRAINTS WHERE REQUIRED:
 - 1" TRANSVERSE BRACING - 2 OPPOSING 1/4" CABLES
 - 1" LONGITUDINAL BRACING - 2 OPPOSING 1/4" CABLES
 - 4" FOUR WAY BRACE AT THE TOP OF THE RISER.
 - PROVIDE WITH FLEXIBLE COUPLINGS AT THE TOP AND BASE OF THE RISER.
- 8 PROVIDE DRAIN VALVES AT TRAPPED SECTIONS OF PIPE.
- 9 PROVIDE SPRINKLER HEAD PROTECTION BELOW ALL REFRIGERANT PIPE GROUPINGS AND HVAC DUCT GREATER THAN 6 INCHES WIDE.
- 10 THE MECHANICAL ROOM IS DESIGNED AND BUILT BY REFRIGERATION EQUIPMENT SUPPLIER. THE LAYOUT IS NOT KNOWN UNTIL THE UNIT IS CONSTRUCTED. UNKNOWN OBSTRUCTIONS MAY EXIST WHICH WILL REQUIRE ADDITIONAL SPRINKLERS AND PIPING OF REPOSITIONING OF THE DESIGN LAYOUT. FP CONTRACTOR SHOULD BE PREPARED TO RECONFIGURE THE SPRINKLER SYSTEM.
- 11 SEE M-1 AND M-3 FOR ROOM HEATING REQUIREMENTS. HEATER FURNISHED AND INSTALLED BY MECHANICAL CONTRACTOR.
- 12 6" MAIN 4" CROSSMAIN SHALL BE POSITIONED BETWEEN THE STRUCTURALLY REINFORCED JOIST BAY. SEE STRUCTURAL DRAWING S-4 FOR REINFORCED JOIST BAY LOCATION. PIPING SHALL BE TRAPEZOID SUPPORTED ACROSS THIS BAY, NO EXCEPTIONS (SEE DETAIL #7 SHI-FP-3).
- 13 SPRINKLERS BELOW A/C AND REFRIGERATION EQUIPMENT SHALL EXTEND UP INTO THE CURS TO WITHIN 12" OF THE EQUIPMENT CASING IN BETWEEN THE CURS CROSS SUPPORT BEAM.
- 14 WHEN A RISER ROOM IS USED - PROVIDE WILKINS S.S. MODEL #WER IN BUILDING RISER TO CONNECT THE EXTERIOR FIRE MAIN TO THE FIRE RISER RISER. THE RISER ROOM.
- 15 SEE SITE ARCHITECT DOCUMENT FOR ENTRY CANOPY FIRE PROTECTION SPRINKLER LAYOUT. SEE NOTES S-2, P-3 AND P-4 FOR CANOPY SPRINKLER SYSTEM DESIGN REQUIREMENTS AND SPECIFICATIONS. SUPERMARKETS SOUTH OF FLORIDA SIA-60 SHALL RECEIVE WET PIPE SPRINKLER SYSTEM. STORES NORTH OF FLORIDA SIA-60 WILL BE DRY PIPE SPRINKLER SYSTEMS.
- 16 REFER TO WALL PENETRATION DETAIL DESIGN NO. C-AJ-1081 ON SHEET UL-1.

DESIGN DATA

SALES AREA	STORAGE / RECEIVING
2000 SQ. FT. 125 SQ. FT. / HEAD	2000 SQ. FT. 100 SQ. FT. / HEAD
1.4" 22000 10	1.4" 22000 10
- 8 HEADS / BRANCH	- 7 HEADS / BRANCH



NOTE: LOCATE FIRE PROTECTION BACKFLOW OR AS REQUIRED BY LOCAL UTILITY AND SITE CONDITIONS. VERIFY LOCATION AND WORKFORM PUBLIX ARCHITECT AND CONSTRUCTION PROJECT MANAGER.

LOCATE POST INDICATOR VALVE AWAY FROM BUILDING AS PER NFPA 13

