

PLOT DATE:  
August 21 2018

No.	Description	Date

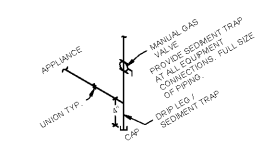
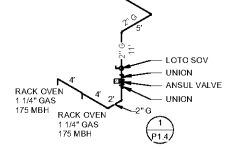
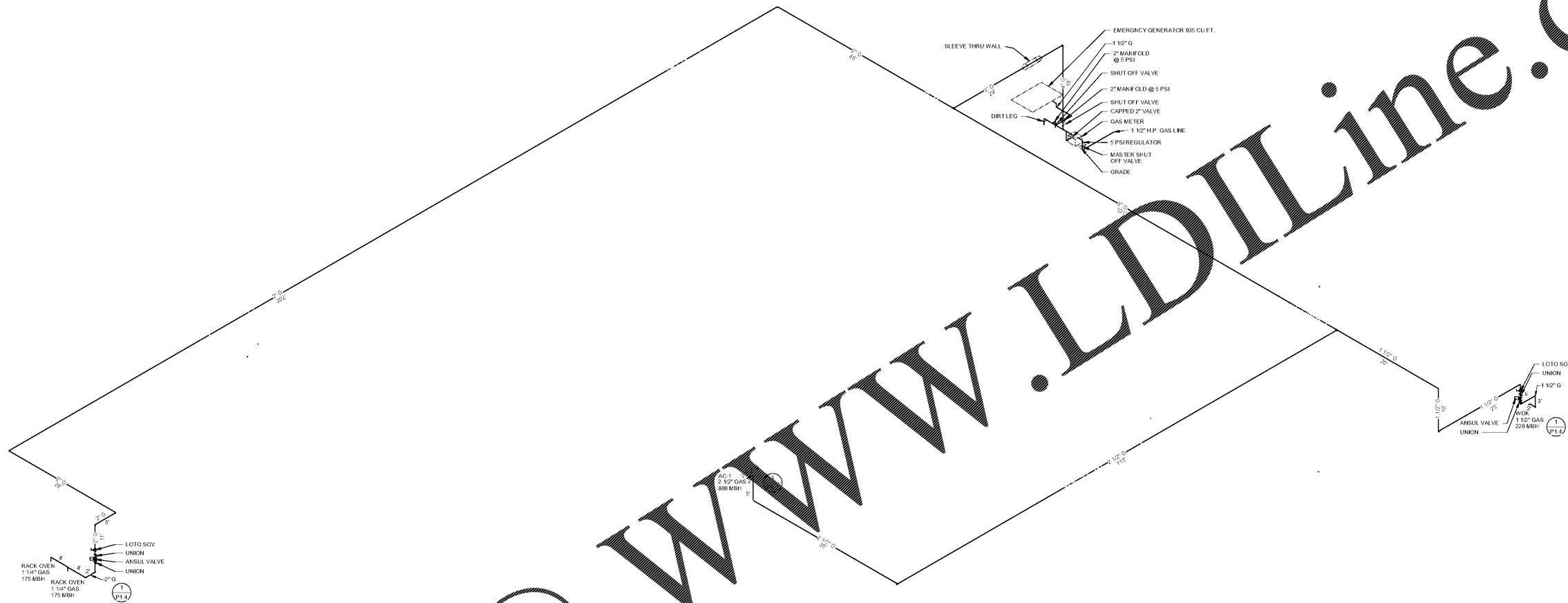
STORE NUMBER  
**1687**  
**Tattersall Park**  
US 280 & Highway 19  
Hoover  
Shelby Co., AL

**48.10**  
SIENNA LITE

GAS PIPING  
ISOMETRIC

NONE

**P1.4**



**P1.4** PLUMB - GAS PIPING DETAIL  
NIS

GAS SYSTEM DESIGN DATA					
EQUIPMENT	DEMAND	ACTUAL LINE LENGTH	DEVELOPED LINE LENGTH	PRESSURE	NOTES
WOK	220	220	300	11\"/>	

NOTE:  
1 TABLE 404.2(1) - 2009 ICC  
2 TABLE 404.2(1) - 2009 ICC  
3 DEVELOPED LINE LENGTH INDICATED AS THE SAFETY FACTOR BASED ON THE ACTUAL LINE LENGTH GAS SIZE PER BRANCH LENGTH METHOD (ICC 404.2)  
4 1/2\"/>

Order Plans @ [www.LDILine.com](http://www.LDILine.com)