

CORPORATE OFFICES, FACILITIES DESIGN
BOX 407, LAKELAND, FL 33802
(813) 680-3356

PUBLIX FACILITIES DESIGN

DAVID R. BEEBE, PE
ARCHITECT F.L. REG. 38112
DAVID R. BEEBE, PE
ARCHITECT F.L. REG. 38112

DAVID R. BEEBE, PE
ARCHITECT F.L. REG. 38112
DAVID R. BEEBE, PE
ARCHITECT F.L. REG. 38112

DAVID R. BEEBE, PE
ARCHITECT F.L. REG. 38112
DAVID R. BEEBE, PE
ARCHITECT F.L. REG. 38112

DAVID R. BEEBE, PE
ARCHITECT F.L. REG. 38112
DAVID R. BEEBE, PE
ARCHITECT F.L. REG. 38112

DAVID R. BEEBE, PE
ARCHITECT F.L. REG. 38112
DAVID R. BEEBE, PE
ARCHITECT F.L. REG. 38112

DAVID R. BEEBE, PE
ARCHITECT F.L. REG. 38112
DAVID R. BEEBE, PE
ARCHITECT F.L. REG. 38112

DAVID R. BEEBE, PE
ARCHITECT F.L. REG. 38112
DAVID R. BEEBE, PE
ARCHITECT F.L. REG. 38112

DAVID R. BEEBE, PE
ARCHITECT F.L. REG. 38112
DAVID R. BEEBE, PE
ARCHITECT F.L. REG. 38112

DAVID R. BEEBE, PE
ARCHITECT F.L. REG. 38112
DAVID R. BEEBE, PE
ARCHITECT F.L. REG. 38112

DAVID R. BEEBE, PE
ARCHITECT F.L. REG. 38112
DAVID R. BEEBE, PE
ARCHITECT F.L. REG. 38112

DAVID R. BEEBE, PE
ARCHITECT F.L. REG. 38112
DAVID R. BEEBE, PE
ARCHITECT F.L. REG. 38112

DAVID R. BEEBE, PE
ARCHITECT F.L. REG. 38112
DAVID R. BEEBE, PE
ARCHITECT F.L. REG. 38112

DAVID R. BEEBE, PE
ARCHITECT F.L. REG. 38112
DAVID R. BEEBE, PE
ARCHITECT F.L. REG. 38112

DAVID R. BEEBE, PE
ARCHITECT F.L. REG. 38112
DAVID R. BEEBE, PE
ARCHITECT F.L. REG. 38112

DAVID R. BEEBE, PE
ARCHITECT F.L. REG. 38112
DAVID R. BEEBE, PE
ARCHITECT F.L. REG. 38112

DAVID R. BEEBE, PE
ARCHITECT F.L. REG. 38112
DAVID R. BEEBE, PE
ARCHITECT F.L. REG. 38112

DAVID R. BEEBE, PE
ARCHITECT F.L. REG. 38112
DAVID R. BEEBE, PE
ARCHITECT F.L. REG. 38112

DAVID R. BEEBE, PE
ARCHITECT F.L. REG. 38112
DAVID R. BEEBE, PE
ARCHITECT F.L. REG. 38112

DAVID R. BEEBE, PE
ARCHITECT F.L. REG. 38112
DAVID R. BEEBE, PE
ARCHITECT F.L. REG. 38112

DAVID R. BEEBE, PE
ARCHITECT F.L. REG. 38112
DAVID R. BEEBE, PE
ARCHITECT F.L. REG. 38112

DAVID R. BEEBE, PE
ARCHITECT F.L. REG. 38112
DAVID R. BEEBE, PE
ARCHITECT F.L. REG. 38112

DAVID R. BEEBE, PE
ARCHITECT F.L. REG. 38112
DAVID R. BEEBE, PE
ARCHITECT F.L. REG. 38112

DAVID R. BEEBE, PE
ARCHITECT F.L. REG. 38112
DAVID R. BEEBE, PE
ARCHITECT F.L. REG. 38112

DAVID R. BEEBE, PE
ARCHITECT F.L. REG. 38112
DAVID R. BEEBE, PE
ARCHITECT F.L. REG. 38112

DAVID R. BEEBE, PE
ARCHITECT F.L. REG. 38112
DAVID R. BEEBE, PE
ARCHITECT F.L. REG. 38112

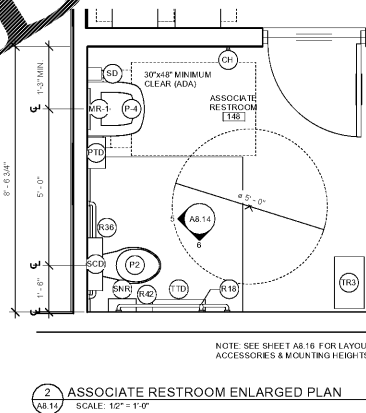
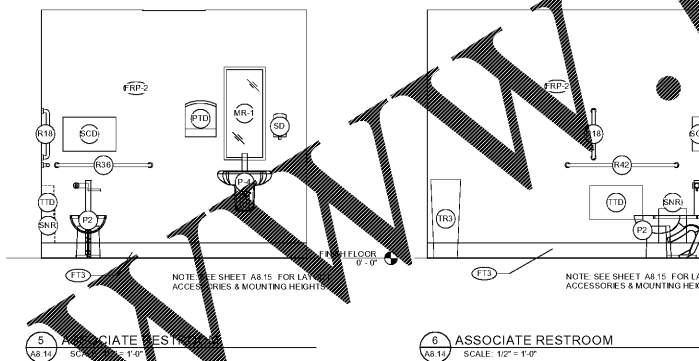
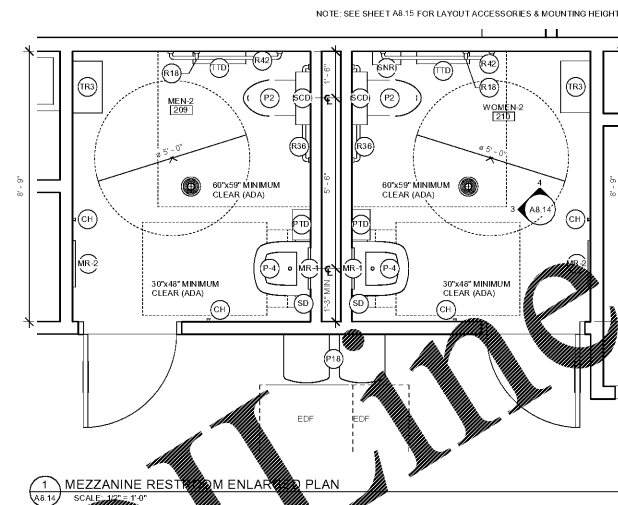
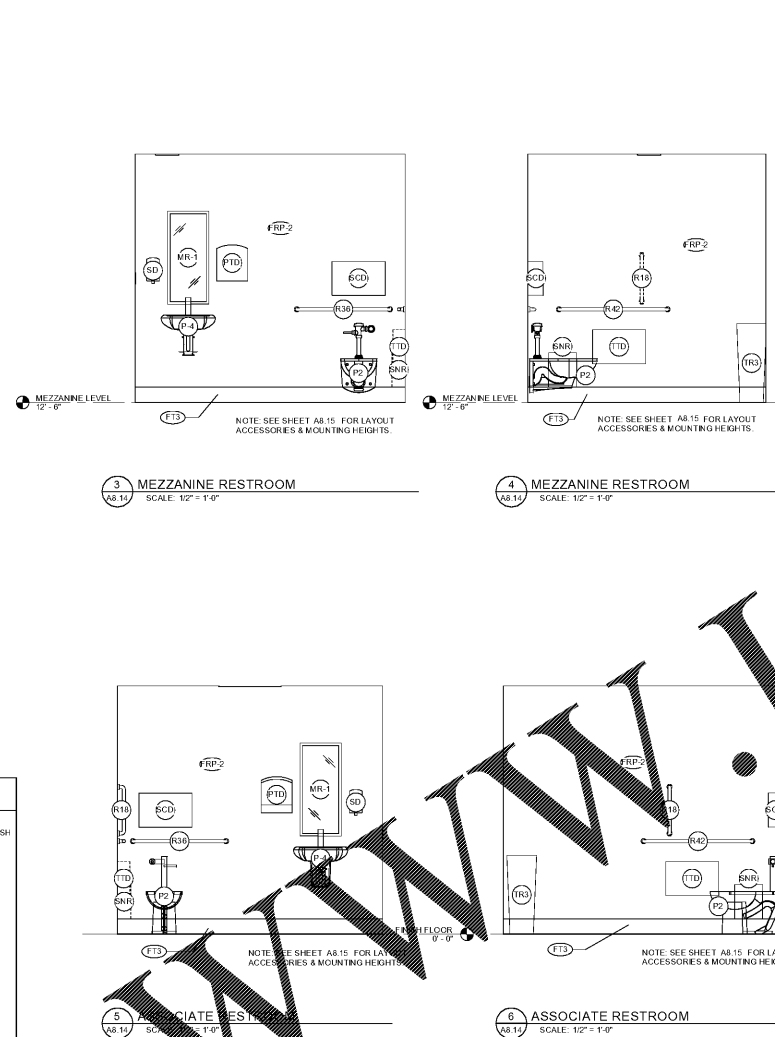
DAVID R. BEEBE, PE
ARCHITECT F.L. REG. 38112
DAVID R. BEEBE, PE
ARCHITECT F.L. REG. 38112

DAVID R. BEEBE, PE
ARCHITECT F.L. REG. 38112
DAVID R. BEEBE, PE
ARCHITECT F.L. REG. 38112

DAVID R. BEEBE, PE
ARCHITECT F.L. REG. 38112
DAVID R. BEEBE, PE
ARCHITECT F.L. REG. 38112

TOILET ACCESSORY LEGEND. Lists symbols for items like Baby Changing Station, Coat Hook, Mirror, Water Closet, Urinal, Lavatory, Paper Towel Dispenser, etc.

FINISHES & COLORS LEGEND (SIENNA & SIENNA LITE). Lists material codes and descriptions for flooring, wall finishes, and fixtures.



Order form section with fields for Plot Date (August 21, 2018), Store Number (1687), Address (Tattersall Park, US 280 & Highway 19, Hoover, Shelby Co., AL), Price (48.10), and Project Name (SIENNA LITE RESTROOMS AND ADA DETAILS).

Large diagonal watermark text reading "Order Form @ WWW.WALDINDIline.com"

Large diagonal watermark text reading "WWW.WALDINDIline.com"

PERMIT SET DATE 8/29/2018 11:14:05 AM