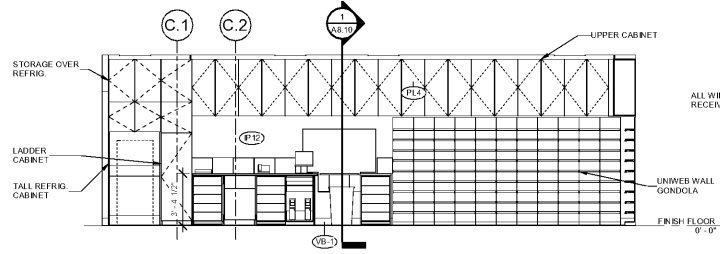
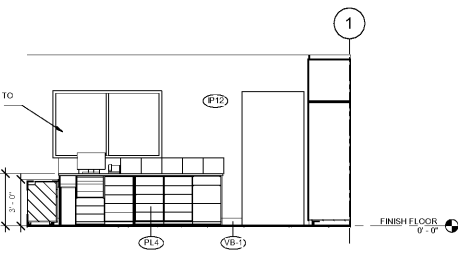


1 PHARMACY - EXTERIOR
SCALE: 1/4" = 1'-0"

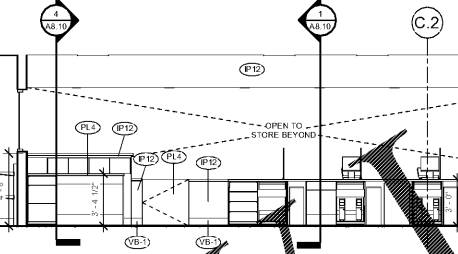
2 PHARMACY - EXTERIOR
SCALE: 1/4" = 1'-0"



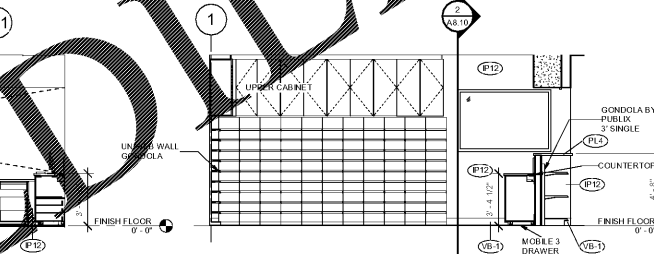
3 PHARMACY - INTERIOR
SCALE: 1/4" = 1'-0"



4 PHARMACY - INTERIOR
SCALE: 1/4" = 1'-0"

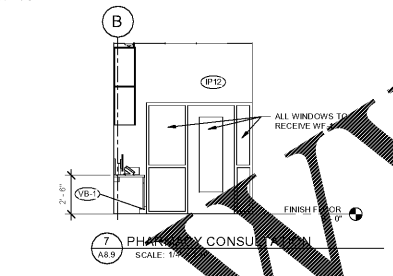


5 PHARMACY - INTERIOR
SCALE: 1/4" = 1'-0"

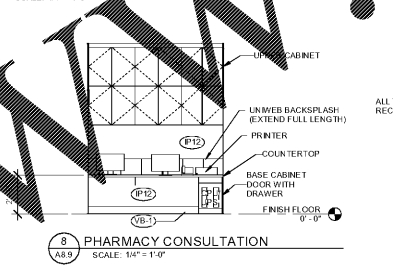


6 PHARMACY - INTERIOR
SCALE: 1/4" = 1'-0"

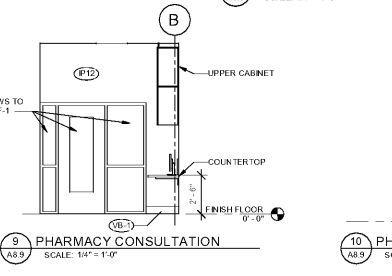
FINISHES & COLORS LEGEND (SIENNA & SIENNA LITE)			
IP-1	INTERIOR PANEL	CW	COOLER WALL/FREEZER PANEL FINISH
IP-1	SHERWIN WILLIAMS SW 6102 PORTELLO	CW-A	COOLER WALL/FREEZER PANEL - EMBOSSED ALUMINUM FINISH
IP-2	SHERWIN WILLIAMS SW 0042	CW-S	COOLER WALL/FREEZER PANEL - STAINLESS STEEL FINISH
IP-3	RUSKIN ROOM GREEN (NOT USED)	CW-W	COOLER WALL/FREEZER PANEL - WHITE FINISH
IP-4	SHERWIN WILLIAMS SW 6119 ANTIQUE WHITE	CW-EX	COOLER WALL/FREEZER PANEL - EXISTING TO REMAIN
IP-5	SHERWIN WILLIAMS SW 6674 JONGUIE		
IP-6	SHERWIN WILLIAMS SW 6516 DOWN POUR		
IP-7	SHERWIN WILLIAMS SW 6509 OYSTERS GOLD	SS-1	STAINLESS STEEL
IP-8	SHERWIN WILLIAMS SW 6431 LEAF FROG	SS-EX	EXISTING STAINLESS STEEL FINISH TO REMAIN
IP-9	(NOT USED)	GL-1	GALVANIZED STEEL
IP-10	SHERWIN WILLIAMS SW 6716 DANKING GREEN	TP-	CERAMIC & FLOOR TILE PATTERN - SEE CORRESPONDING DETAIL IN PUBLIX TILE PATTERN MANUAL AT http://corporate.publix.com/business/design-and-construction
IP-11	SHERWIN WILLIAMS SW 6228 REFUGE	FT-	EXISTING CERAMIC TILE TO REMAIN
IP-12	SHERWIN WILLIAMS SW 6206 OYSTER BAY	IP-EX	NEW CERAMIC TILE TO MATCH EXISTING
IP-13	SHERWIN WILLIAMS SW 6221 RED BAY	IP-MA	NEW CERAMIC TILE TO MATCH EXISTING
IP-14	SHERWIN WILLIAMS SW 7069 IRON ORE		
IP-15	SHERWIN WILLIAMS SW 6116 TATAMI TAN	VB-1	VINYL BASE - 6" COVED "JOHNSONITE #49 REZE" OR EQUAL
IP-16	(NOT USED)	VB-2	VINYL BASE - 4" COVED (MEDIUM GRAY)
IP-17	SHERWIN WILLIAMS SW 6307 FINE WINE	VB-3	VINYL BASE - 6" COVED (MEDIUM GRAY)
IP-18	SHERWIN WILLIAMS SW 6349 BAKED CLAY	WB-1	WOOD BASE - 4" (MEDIUM GRAY)
IP-19	SHERWIN WILLIAMS SW 6693 SAFE T Y RED	MB-1	NEW FRAMA BASE
IP-20	SHERWIN WILLIAMS SW 6634 LEAF FROG	SS-6	STAINLESS STEEL BASE - 6" COVED
IP-21	SHERWIN WILLIAMS SW 6254 LAZY GRAY	NB-MA	NEW BASE TO MATCH EXISTING ADJACENT
IP-22	SHERWIN WILLIAMS SW 7006 EXTRA WHITE	TLP-1	ALL TOILET PARTITIONS TO BE SCRAN "LINE" OR GLOBAL "OPEN" OR MILLSBOROUGH "LINE" OR AMPCO "MOSAIC"
IP-23	(NOT USED)		
IP-24	SHERWIN WILLIAMS SW 9011 CREWEL TAN	WD-1	TONGUE AND GROOVE PLANKING - 1/2" x 4" WIDE, V-JOINT LONGLEAF SOUTHERN PINE #45 FINISH - MINWAX WOOD FINISH "GOLDEN PECAN"
IP-25	(NOT USED)		
IP-26	(NOT USED)		
IP-27	SHERWIN WILLIAMS SW 6015 LEISURE BLUE	WD-2	(NOT USED)
IP-28	SHERWIN WILLIAMS SW 6927 BLISSFUL BLUE	WC-EX	EXISTING WALL TO REMAIN
IP-MA	MATCH EXISTING ADJACENT COLOR	GZ-1	QUARTZ GRANITE SLAB - CAMBRIA DESER COLLECTION "SHERWIN" (3CM THICK - MIRROR EDGE)
IP-EX	EXISTING PAINT COLOR TO REMAIN	AM-1	ACCEPTED MATERIAL PROVIDED BY PUBLIX SUPER MARKETS, INC. OR MATCH EXISTING
PL	PLASTIC LAMINATE	GL	GLASS (1/2" OR 3/4" THICK) - CLEAR OR TINTED (AS SPECIFIED)
PL-1	(NOT USED)	GL-1	GLASS (1/2" OR 3/4" THICK) - CLEAR OR TINTED (AS SPECIFIED)
PL-2	(NOT USED)	GL-2	GLASS (1/2" OR 3/4" THICK) - CLEAR OR TINTED (AS SPECIFIED)
PL-3	WILSONART ALLIANCE TYPE 418	PP-1	PRINTED PLYWOOD - SHERWIN WILLIAMS SW 6254 LAZY GRAY
PL-4	WILSONART #1809-18 "TAN ECHO"	PP-2	PRINTED PLYWOOD - SHERWIN WILLIAMS SW 6254 LAZY GRAY
PL-5	WILSONART #2069-18 "ALOHAI TOPAL"	PP-3	PRINTED PLYWOOD - SHERWIN WILLIAMS SW 6254 LAZY GRAY
PL-6	(NOT USED)	PP-4	PRINTED PLYWOOD - SHERWIN WILLIAMS SW 6254 LAZY GRAY
PL-7	WILSONART #2069-18 "ALOHAI TOPAL"	PP-5	PRINTED PLYWOOD - SHERWIN WILLIAMS SW 6254 LAZY GRAY
PL-8	WILSONART #4673-18 "RED MESA"	PP-6	PRINTED PLYWOOD - SHERWIN WILLIAMS SW 6254 LAZY GRAY
PL-9	WILSONART #4673-18 "RED MESA"	PP-7	PRINTED PLYWOOD - SHERWIN WILLIAMS SW 6254 LAZY GRAY
PL-10	WILSONART #4673-18 "RED MESA"	PP-8	PRINTED PLYWOOD - SHERWIN WILLIAMS SW 6254 LAZY GRAY
PL-11	WILSONART #4673-18 "RED MESA"	PP-9	PRINTED PLYWOOD - SHERWIN WILLIAMS SW 6254 LAZY GRAY
PL-12	CANPLA #0869 "BRUSHED ALUMINUM"	PP-10	PRINTED PLYWOOD - SHERWIN WILLIAMS SW 6254 LAZY GRAY
PL-13	WILSONART #18 "TAN ECHO"	PP-11	PRINTED PLYWOOD - SHERWIN WILLIAMS SW 6254 LAZY GRAY
PL-14	ACROVIN CLEAR LEON WALL PROTECTION - #410	PP-12	PRINTED PLYWOOD - SHERWIN WILLIAMS SW 6254 LAZY GRAY
PL-MA	NEW PLASTIC LAMINATE TO MATCH EXISTING	PP-13	PRINTED PLYWOOD - SHERWIN WILLIAMS SW 6254 LAZY GRAY
PL-EX	EXISTING PLASTIC LAMINATE TO REMAIN	PP-14	PRINTED PLYWOOD - SHERWIN WILLIAMS SW 6254 LAZY GRAY
FRP	FIBERGLASS REINFORCED PLASTIC	PP-15	PRINTED PLYWOOD - SHERWIN WILLIAMS SW 6254 LAZY GRAY
FRP-1	SEQUENTIA "STRUCTOCOLAS FRFP" - "ALMOND" MARLITE "STANDARD FRFP" - "BROWN" GLASSTEEL "GLASNER FRFP" - "IVORY" CRANE COMPOSITES (REMLITE) "TIRE-X GLASBORO" - "COLONIA WHITE"	PP-16	PRINTED PLYWOOD - SHERWIN WILLIAMS SW 6254 LAZY GRAY
FRP-2	SEQUENTIA "STRUCTOCOLAS FRFP" - "WHITE" MARLITE "STANDARD FRFP" - "WHITE" GLASSTEEL "GLASNER FRFP" - "BRIGHT WHITE" CRANE COMPOSITES (REMLITE) "TIRE-X GLASBORO" - "WHITE"	PP-17	PRINTED PLYWOOD - SHERWIN WILLIAMS SW 6254 LAZY GRAY
FRP-3	SEQUENTIA "STRUCTOCOLAS FRFP" - "GRAY" MARLITE "STANDARD FRFP" - "LIGHT GRAY" GLASSTEEL "GLASNER FRFP" - "LIGHT GRAY" CRANE COMPOSITES (REMLITE) "TIRE-X GLASBORO" - "PEARL GRAY"	PP-18	PRINTED PLYWOOD - SHERWIN WILLIAMS SW 6254 LAZY GRAY
FRP-EX	EXISTING FRP PANELS TO REMAIN	PP-19	PRINTED PLYWOOD - SHERWIN WILLIAMS SW 6254 LAZY GRAY
FRP-MA	NEW FRP PANELS TO MATCH EXISTING	PP-20	PRINTED PLYWOOD - SHERWIN WILLIAMS SW 6254 LAZY GRAY
NOTE			



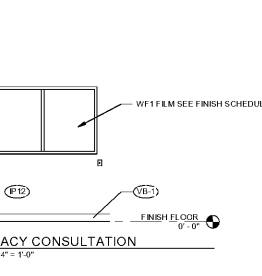
7 PHARMACY CONSULTATION
SCALE: 1/4" = 1'-0"



8 PHARMACY CONSULTATION
SCALE: 1/4" = 1'-0"



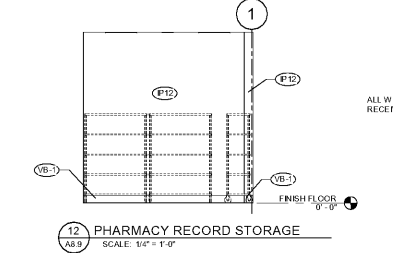
9 PHARMACY CONSULTATION
SCALE: 1/4" = 1'-0"



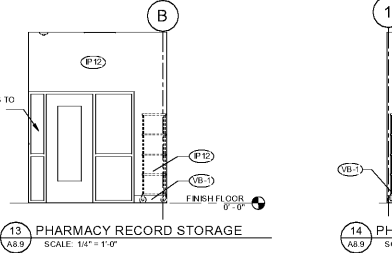
10 PHARMACY CONSULTATION
SCALE: 1/4" = 1'-0"



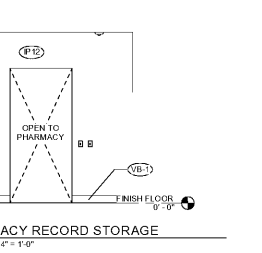
11 PHARMACY RECORD STORAGE
SCALE: 1/4" = 1'-0"



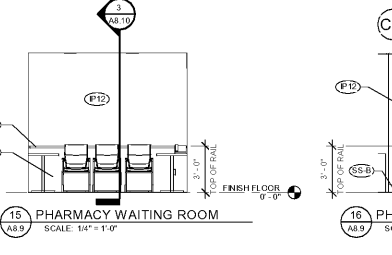
12 PHARMACY RECORD STORAGE
SCALE: 1/4" = 1'-0"



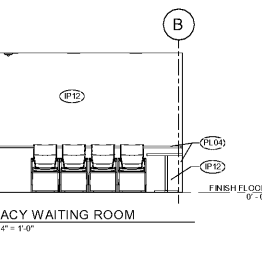
13 PHARMACY RECORD STORAGE
SCALE: 1/4" = 1'-0"



14 PHARMACY RECORD STORAGE
SCALE: 1/4" = 1'-0"



15 PHARMACY WAITING ROOM
SCALE: 1/4" = 1'-0"



16 PHARMACY WAITING ROOM
SCALE: 1/4" = 1'-0"

PLOT DATE:
August 21 2018

No.	Description	Date

STORE NUMBER
1687
Tattersall Park
US 280 & Highway 19
Hoover
Shelby Co., AL

48.10
V814.2018
SIENNA LITE

PHARMACY
ELEVATIONS

As indicated

A8.9

Order Plans